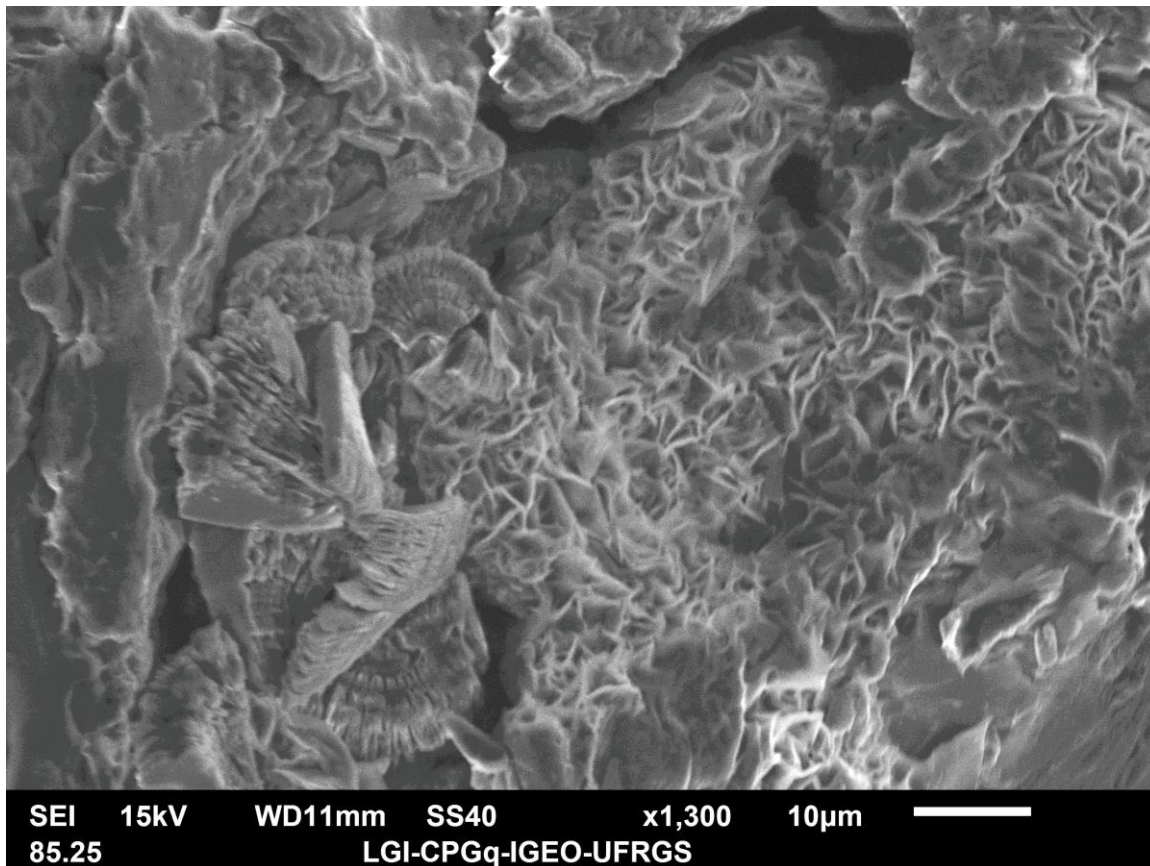
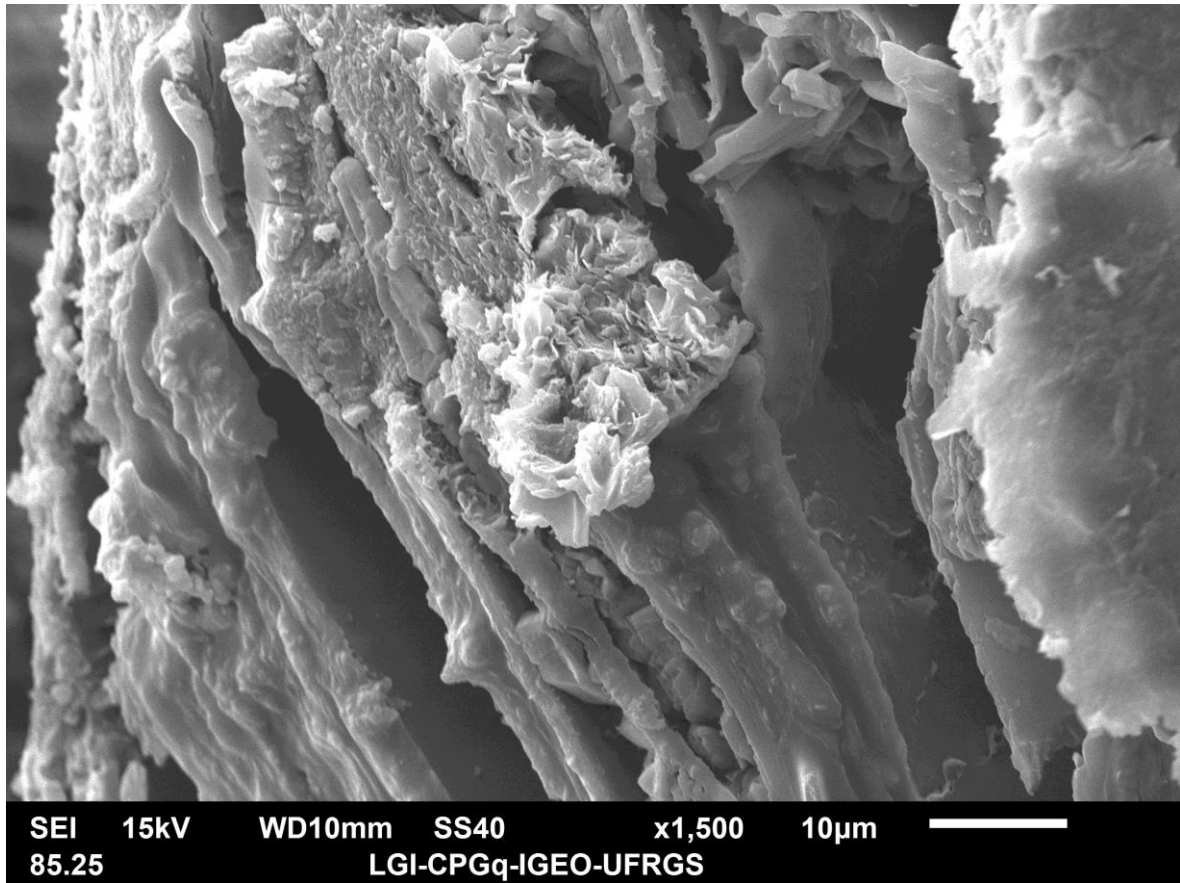


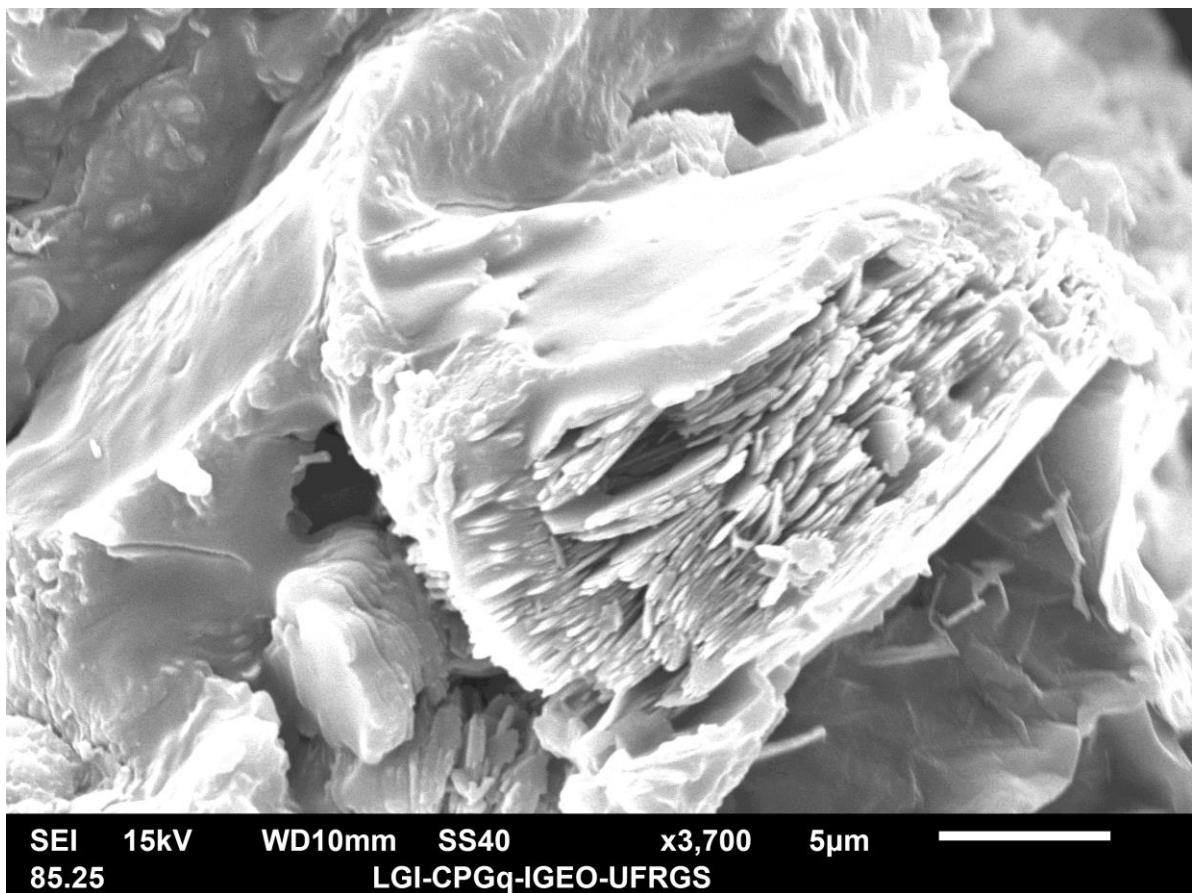
Franjas e rosetas de esmectita.



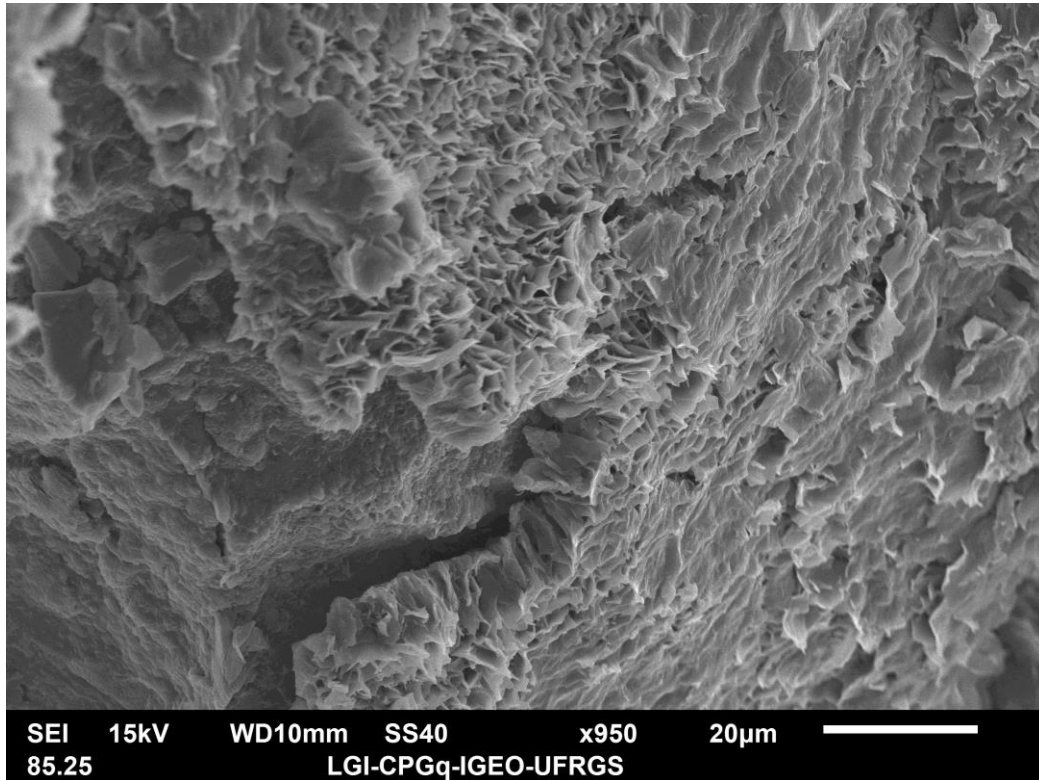
Esmectita e Caulinita.



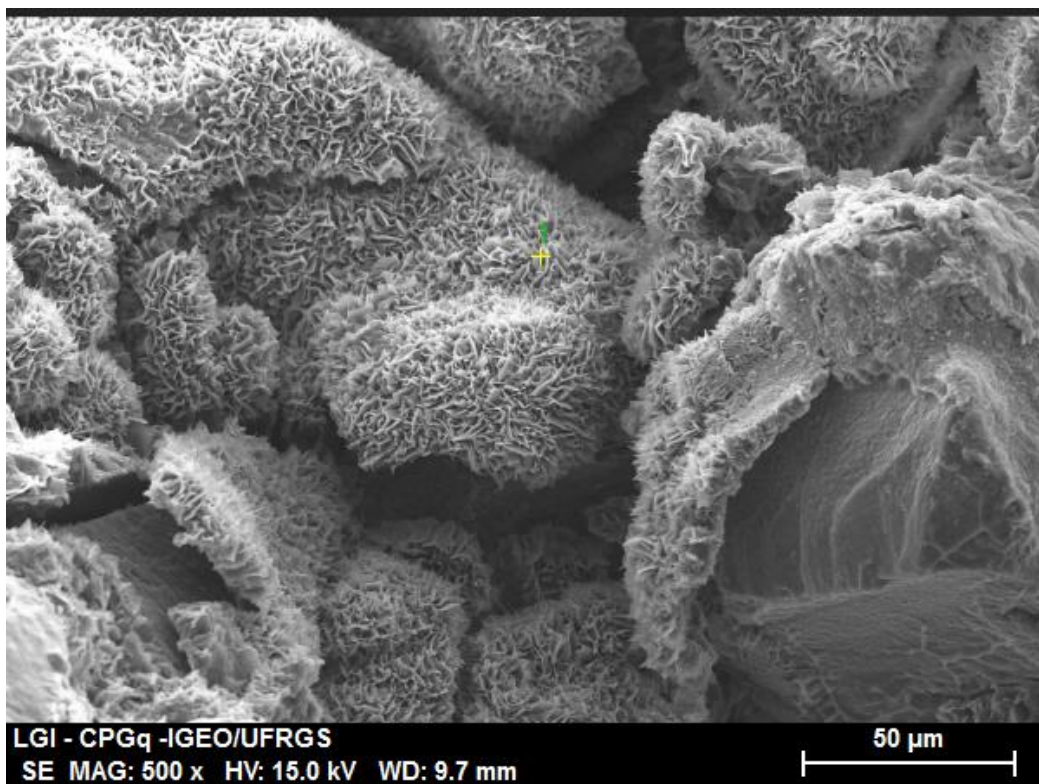
Esmectita microcristalina expandindo biotita.



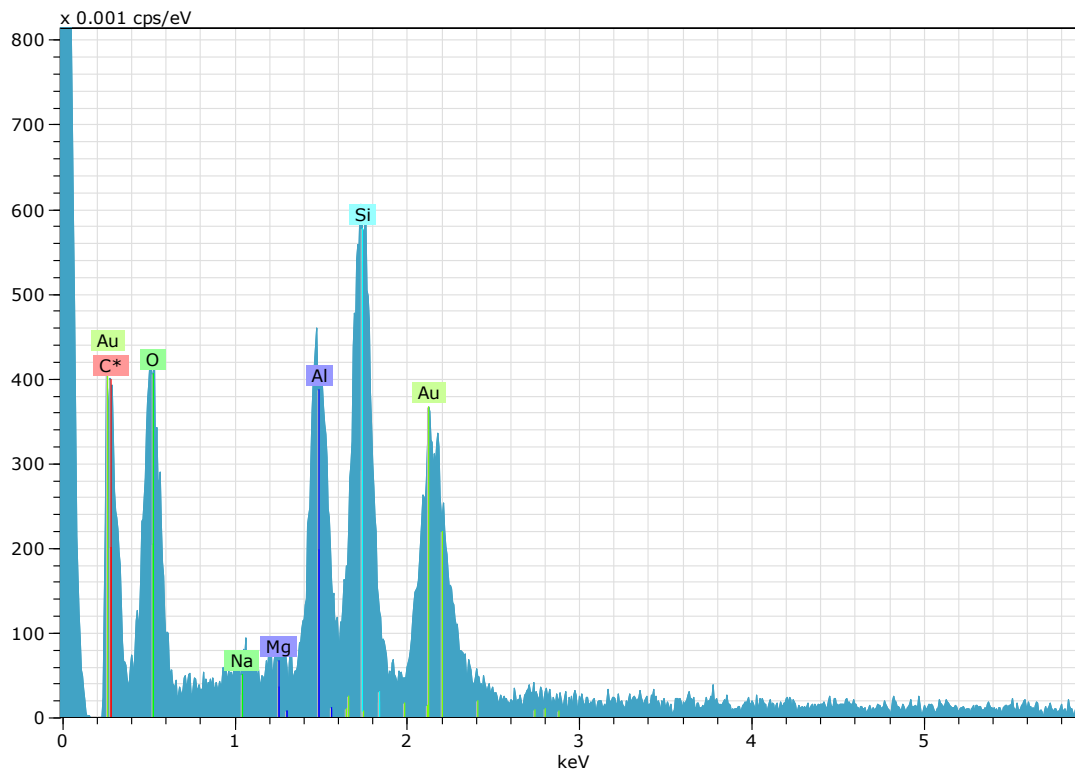
Caulinita vermicular substituindo e expandindo mica.



Franjas de esmectita.



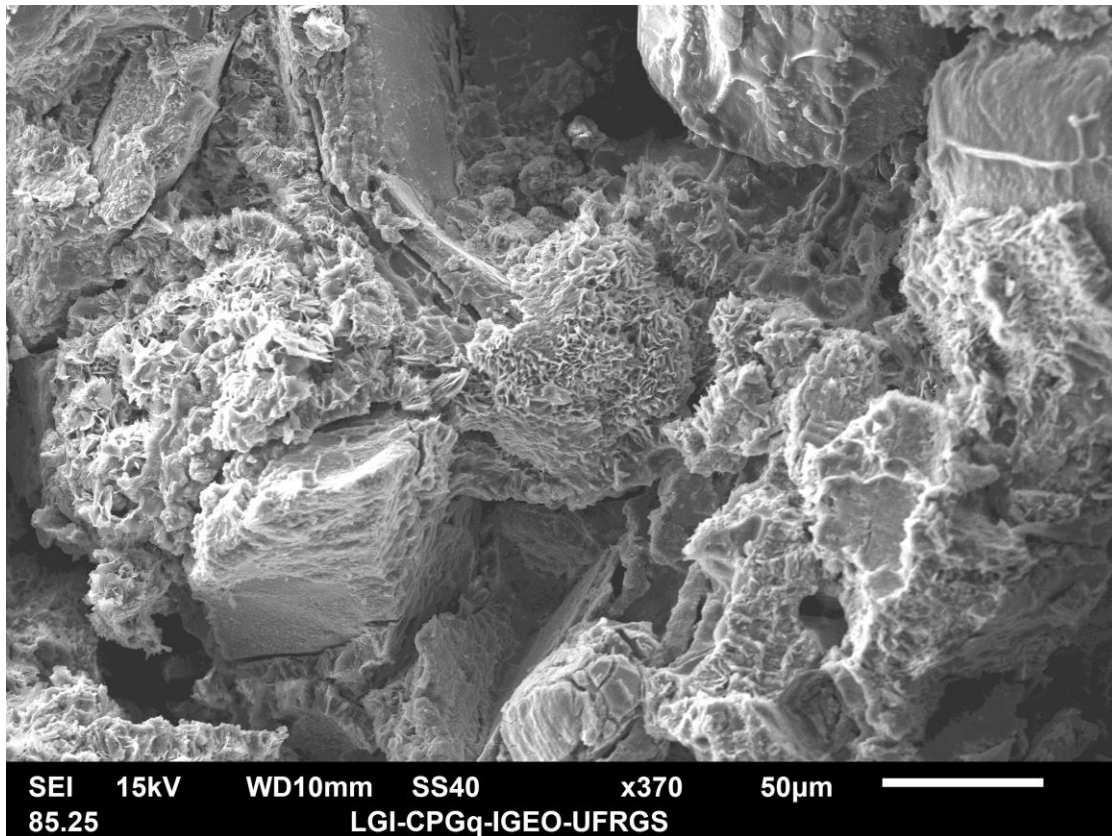
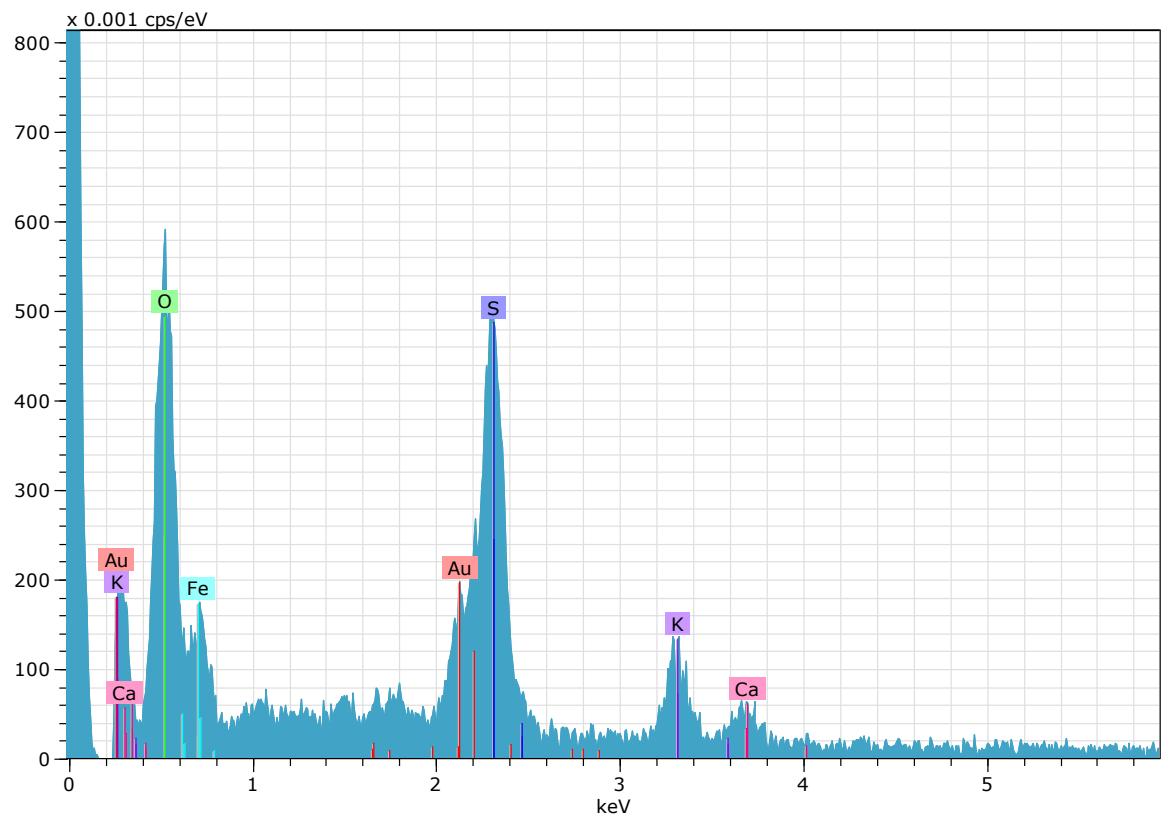
Franjas e rosetas de esmectita.



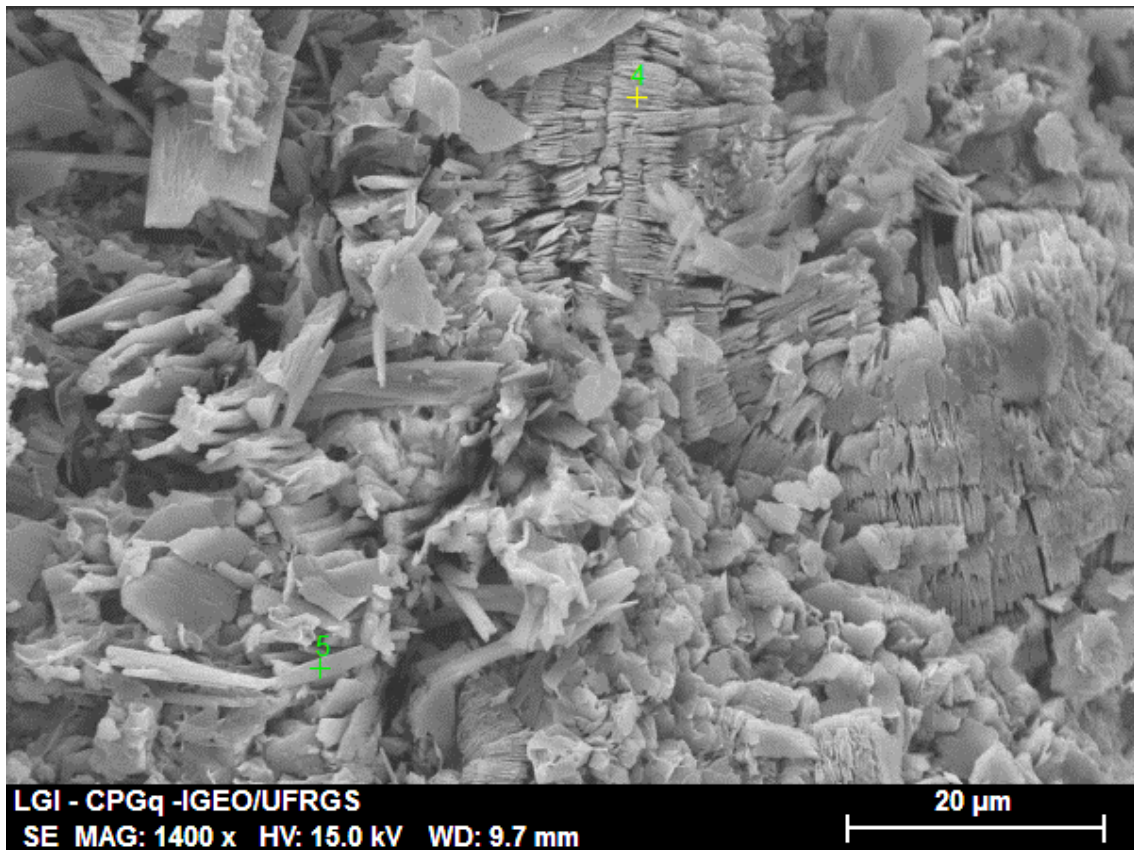
Espectro da esmectita (EDS) no ponto 1.

Spectrum: 1

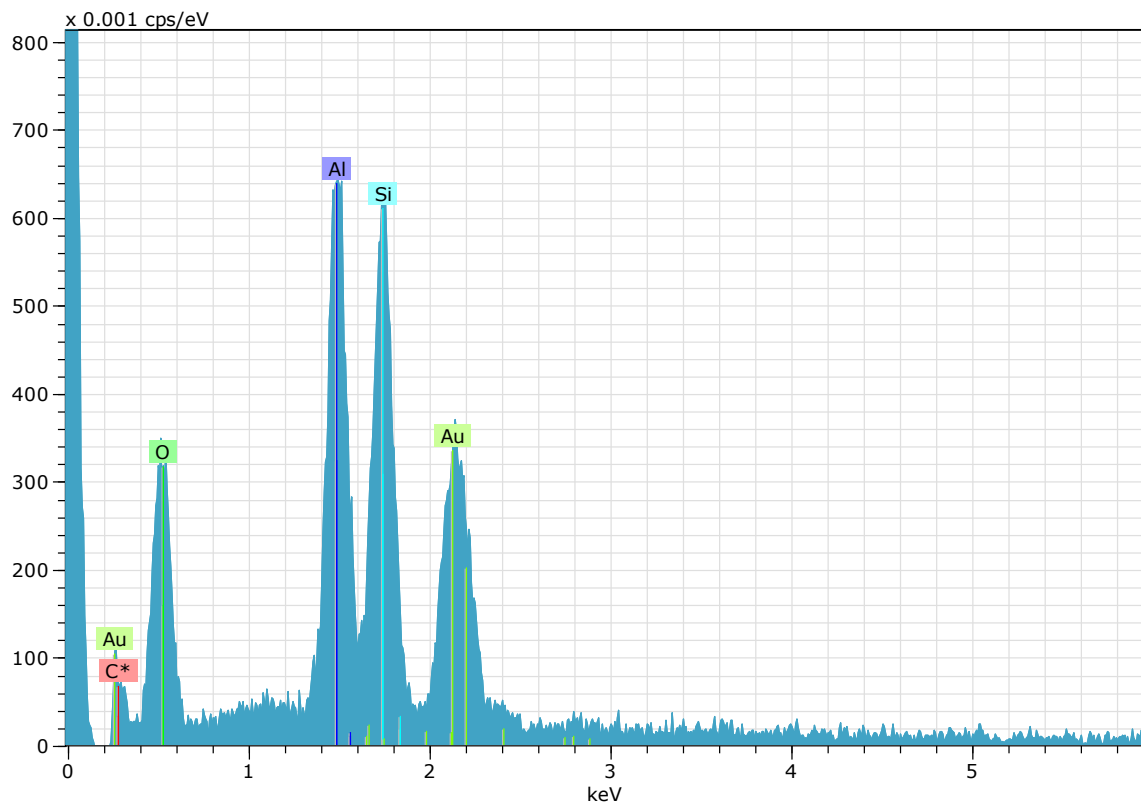
El	AN	Series	unn. C [wt.%]	norm. C [wt.%]	Atom. C [at.%]	Compound	Comp. C [wt.%]	norm. Comp. C [wt.%]	Error (1Sigma) [wt.%]
C	6	K-series	0.00	0.00	0.00		0.00	0.00	0.00
O	8	K-series	23.64	33.33	61.04		0.00	0.00	4.21
Al	13	K-series	8.56	12.06	13.10	Al2O3	22.79	16.17	0.48
Si	14	K-series	14.07	19.84	20.69	SiO2	42.43	30.10	0.68
Au	79	M-series	24.66	34.77	5.17		34.77	24.66	1.10
Total:			70.93	100.00	100.00				



Franjas e cutículas de esmectita.



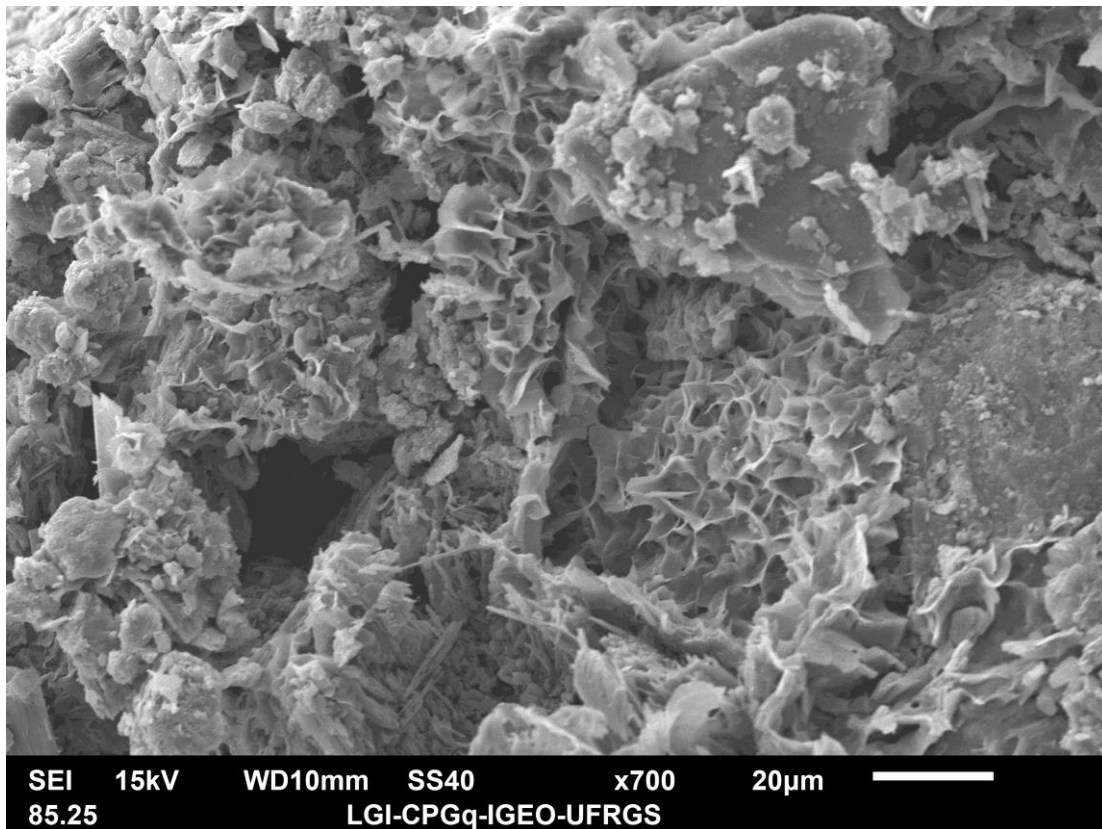
Caulinita vermicular com reentrâncias alinhadas.



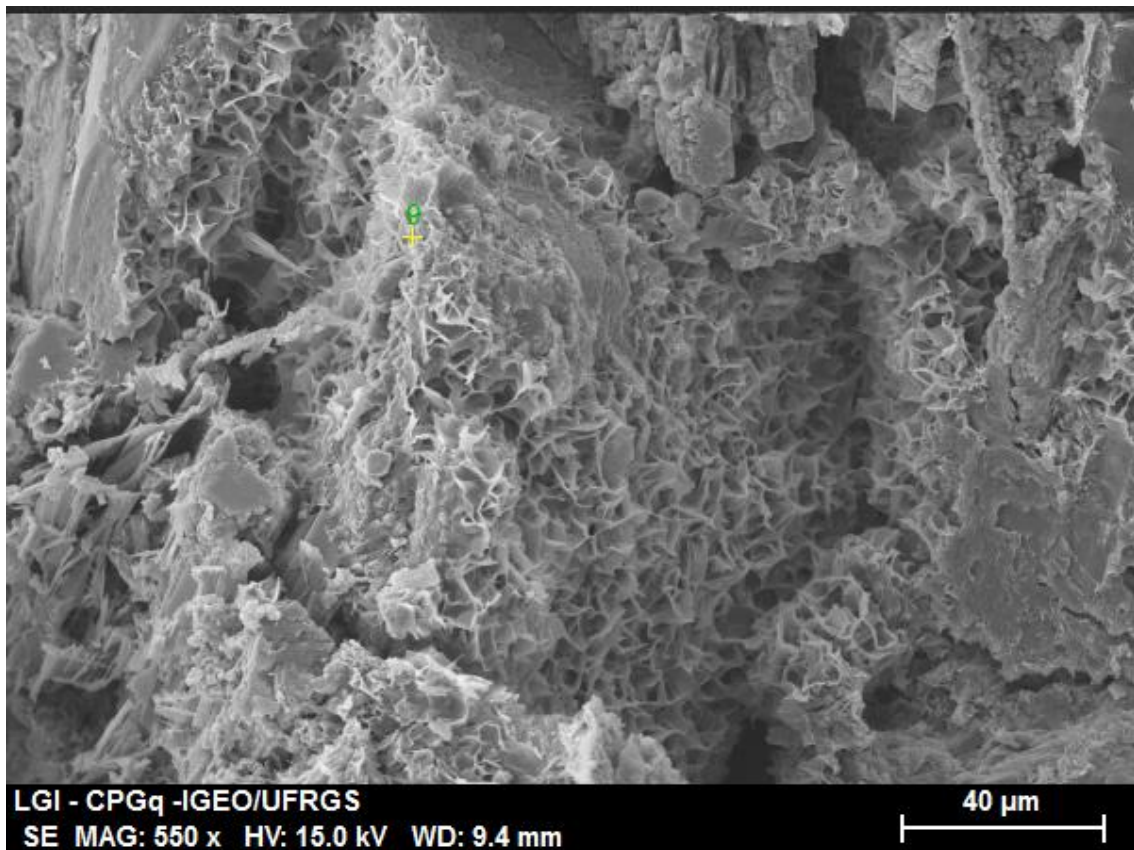
Espectro da caulinita (EDS) no ponto 4.

Spectrum: 4

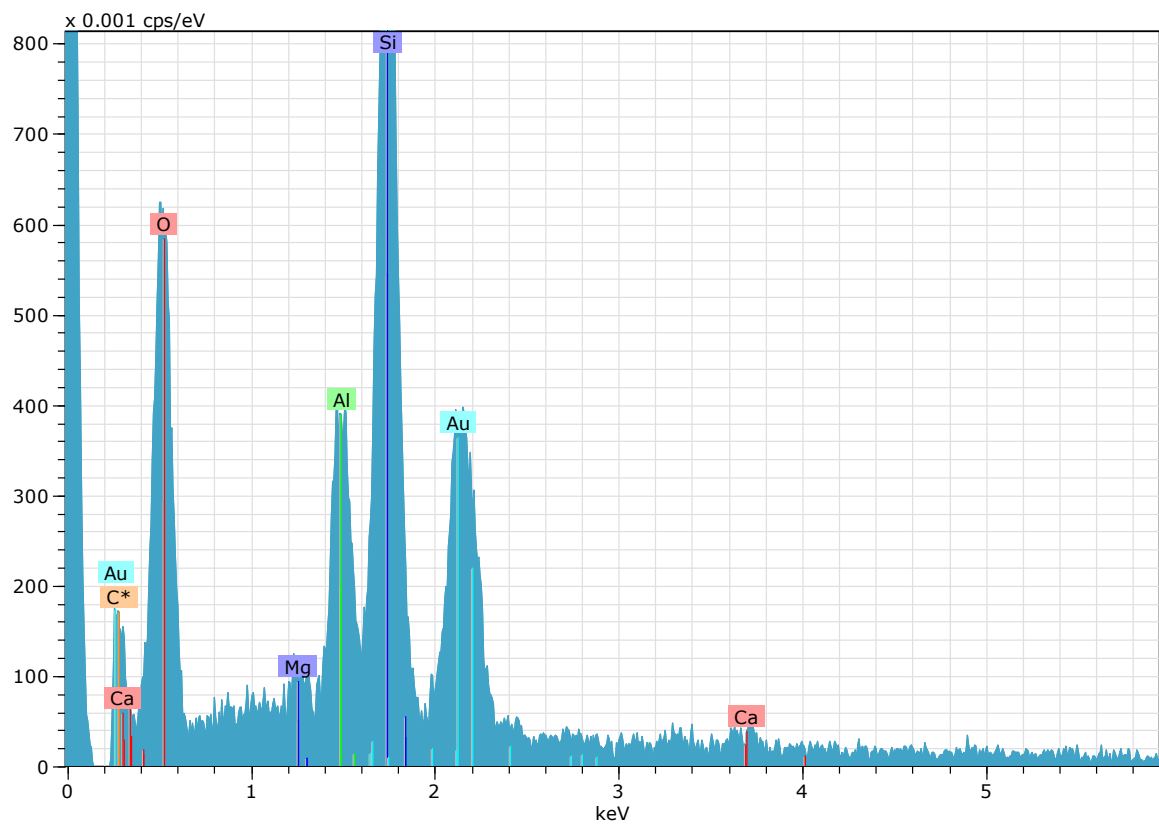
El	AN	Series	unn. C [wt.%]	norm. C [wt.%]	Atom. C [at.%]	Compound	Comp. C [wt.%]	norm. Comp. C [wt.%]	Error (1Sigma) [wt.%]
C	6	K-series	0.00	0.00	0.00		0.00	0.00	0.00
O	8	K-series	28.38	34.79	60.86		0.00	0.00	5.29
Al	13	K-series	13.52	16.57	17.19	Al ₂ O ₃	31.31	25.55	0.72
Si	14	K-series	14.36	17.60	17.54	SiO ₂	37.64	30.71	0.69
Au	79	M-series	25.33	31.04	4.41		31.04	25.33	1.13
Total:			81.59	100.00	100.00				



Franjas e rosetas irregulares de esmectita.



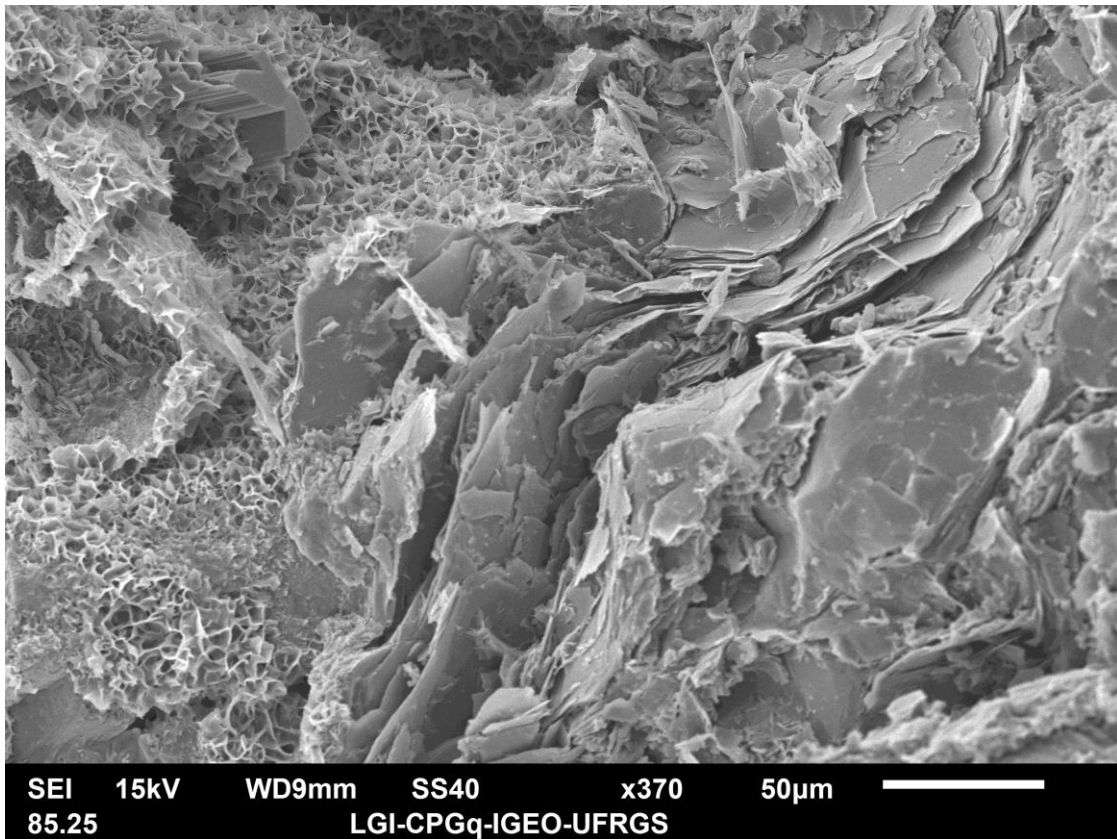
Franjas de esmectita.



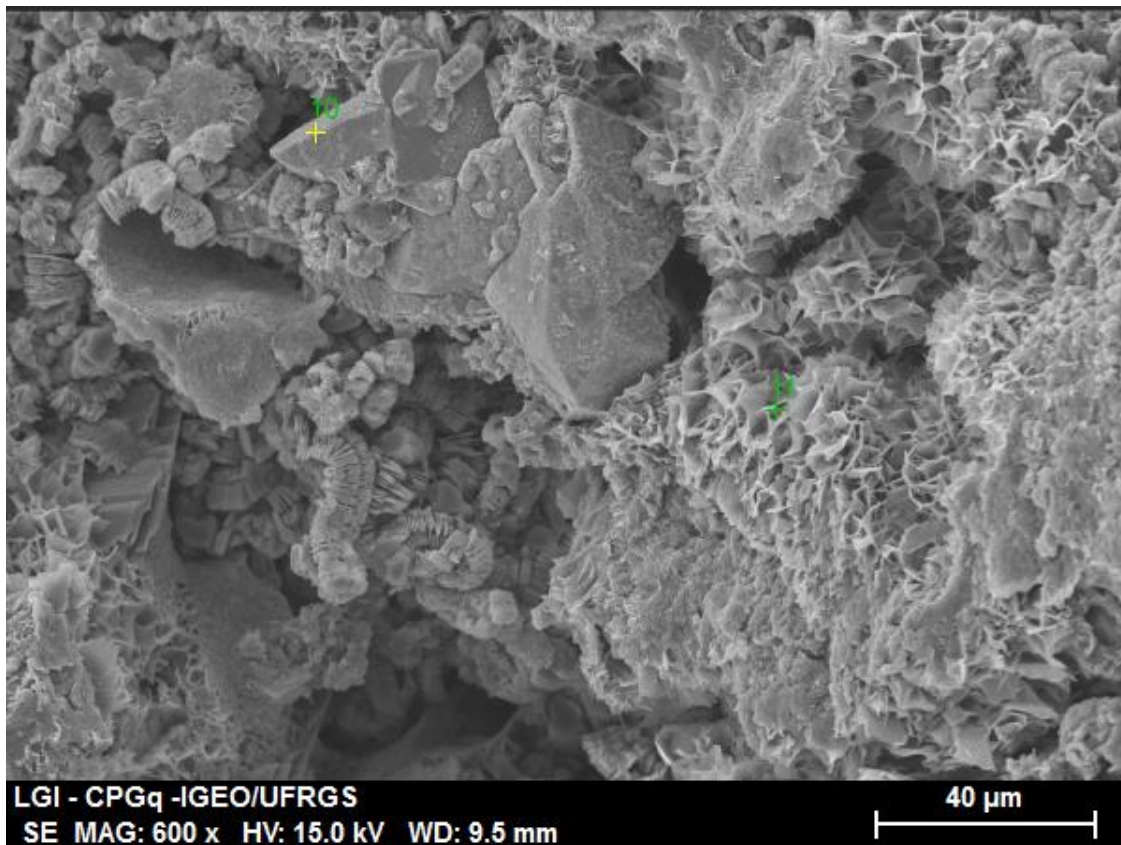
Espectro da esmectita (EDS) no ponto 9.

Spectrum: 9

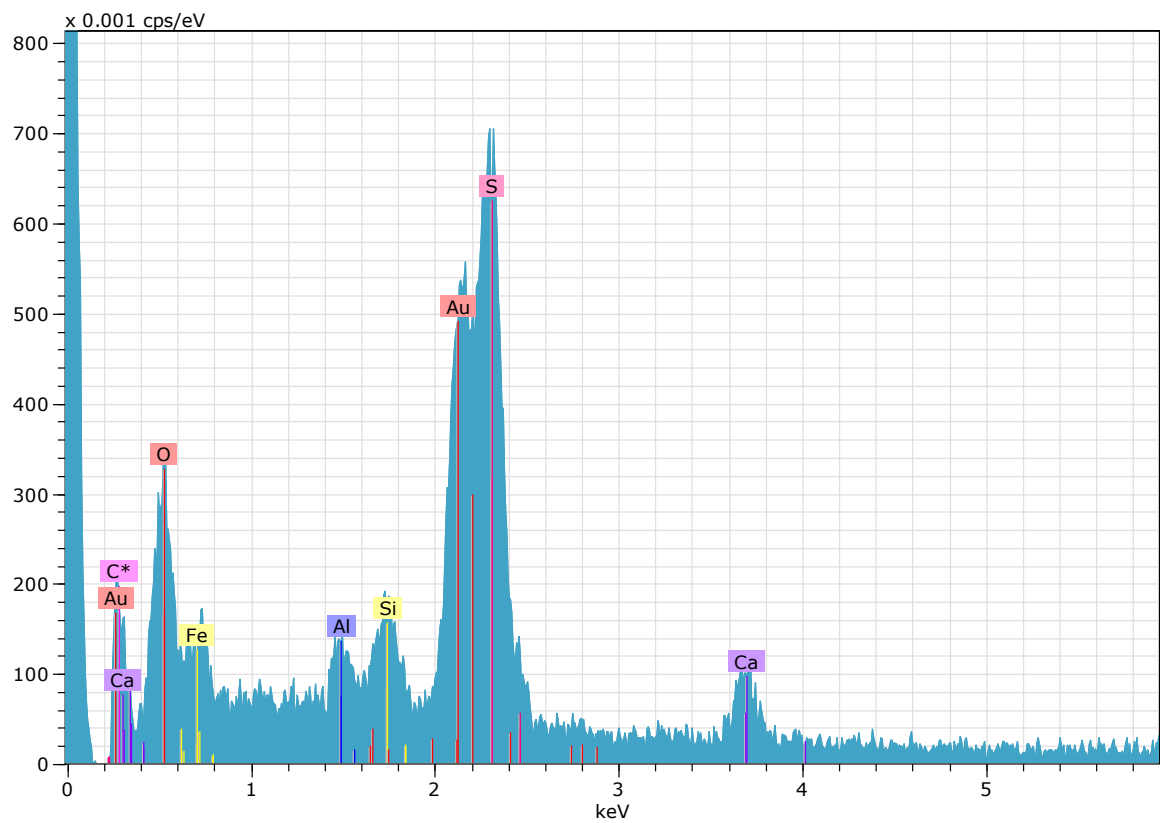
El	AN	Series	unn. C [wt.%]	norm. C [wt.%]	Atom. C [at.%]	Compound	Comp. C [wt.%]	norm. Comp. C [wt.%]	Error (1Sigma) [wt.%]
C	6	K-series	0.00	0.00	0.00		0.00	0.00	0.00
O	8	K-series	20.01	35.99	62.25		0.00	0.00	3.27
Al	13	K-series	4.17	7.50	7.69	Al ₂ O ₃	14.17	7.88	0.25
Si	14	K-series	14.02	25.21	24.84	SiO ₂	53.93	29.99	0.65
Ca	20	K-series	0.83	1.48	1.03	CaO	2.08	1.16	0.10
Au	79	M-series	16.58	29.82	4.19		29.82	16.58	0.74
Total:			55.62	100.00	100.00				



Mica deformada. Franjas de esmectita.



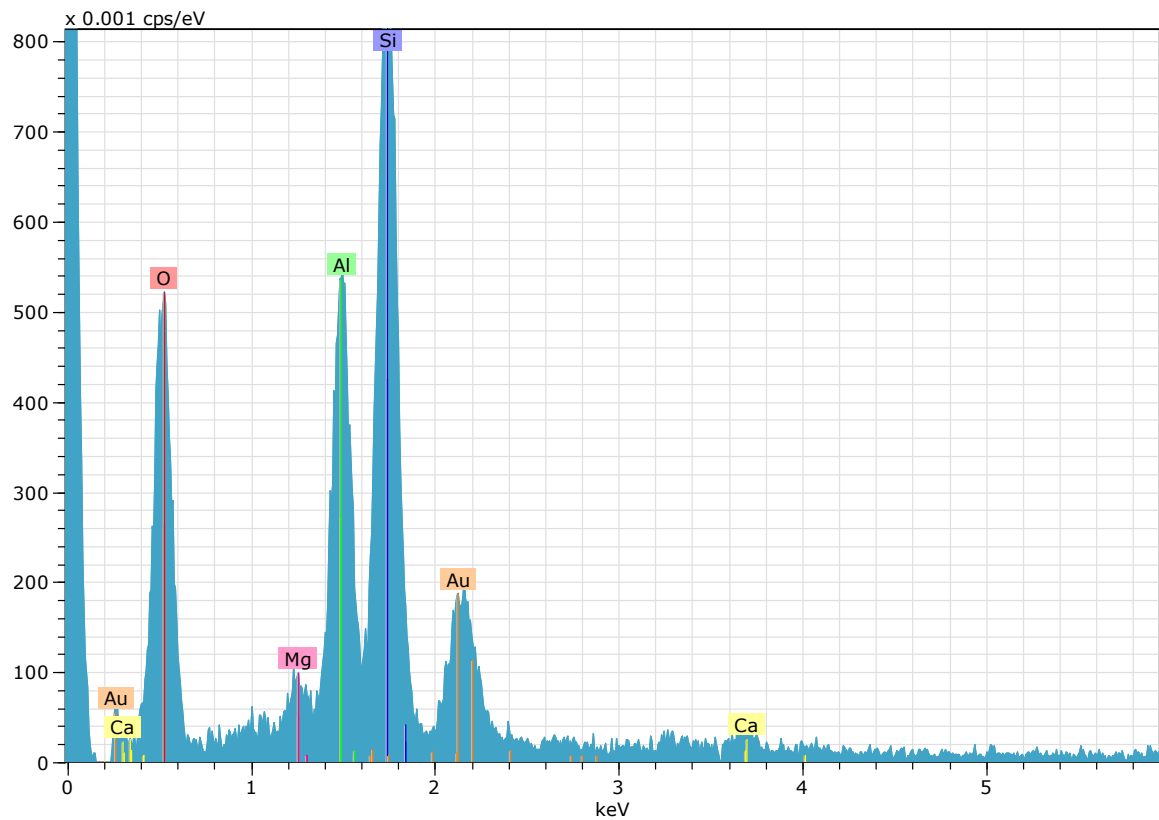
Franjas de esmectita. Caulinita Vermicular. Jarosita.



Espectro da jarosita (EDS) no ponto 10.

Spectrum: 10

El	AN	Series	unn. C [wt.%]	norm. C [wt.%]	Atom. C [at.%]	Compound	Comp. C [wt.%]	norm. Comp. C [wt.%]	Error (1Sigma) [wt.%]
C	6	K-series	0.00	0.00	0.00		0.00	0.00	0.00
O	8	K-series	27.63	33.91	64.75		0.00	0.00	5.33
Al	13	K-series	1.03	1.27	1.44	Al2O3	2.40	1.95	0.10
Si	14	K-series	1.64	2.02	2.19	SiO2	4.32	3.52	0.13
S	16	K-series	13.08	16.05	15.29	SO3	40.07	32.65	0.54
Ca	20	K-series	3.12	3.83	2.92	CaO	5.36	4.37	0.19
Fe	26	K-series	14.02	17.21	9.42	FeO	22.15	18.04	0.64
Au	79	M-series	20.94	25.70	3.99		25.70	20.94	0.90
Total:			81.47	100.00	100.00				



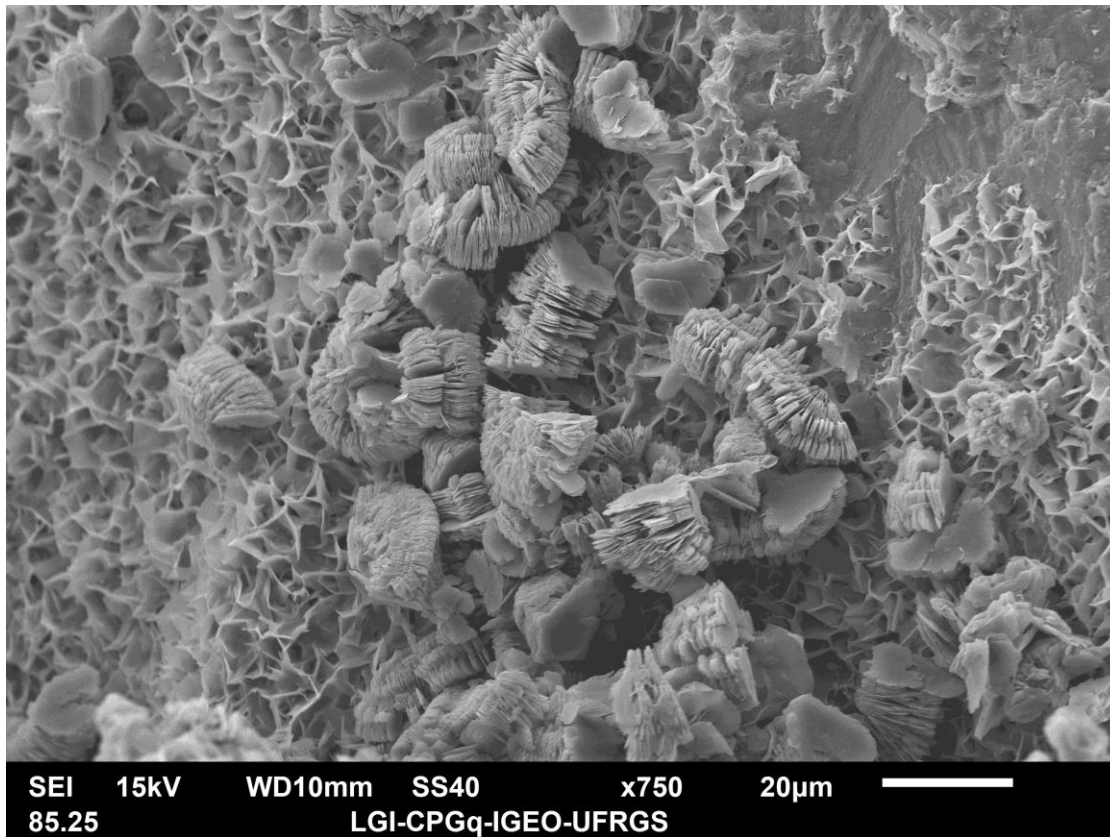
Espectro da esmectita (EDS) no ponto 11.

Spectrum: 11

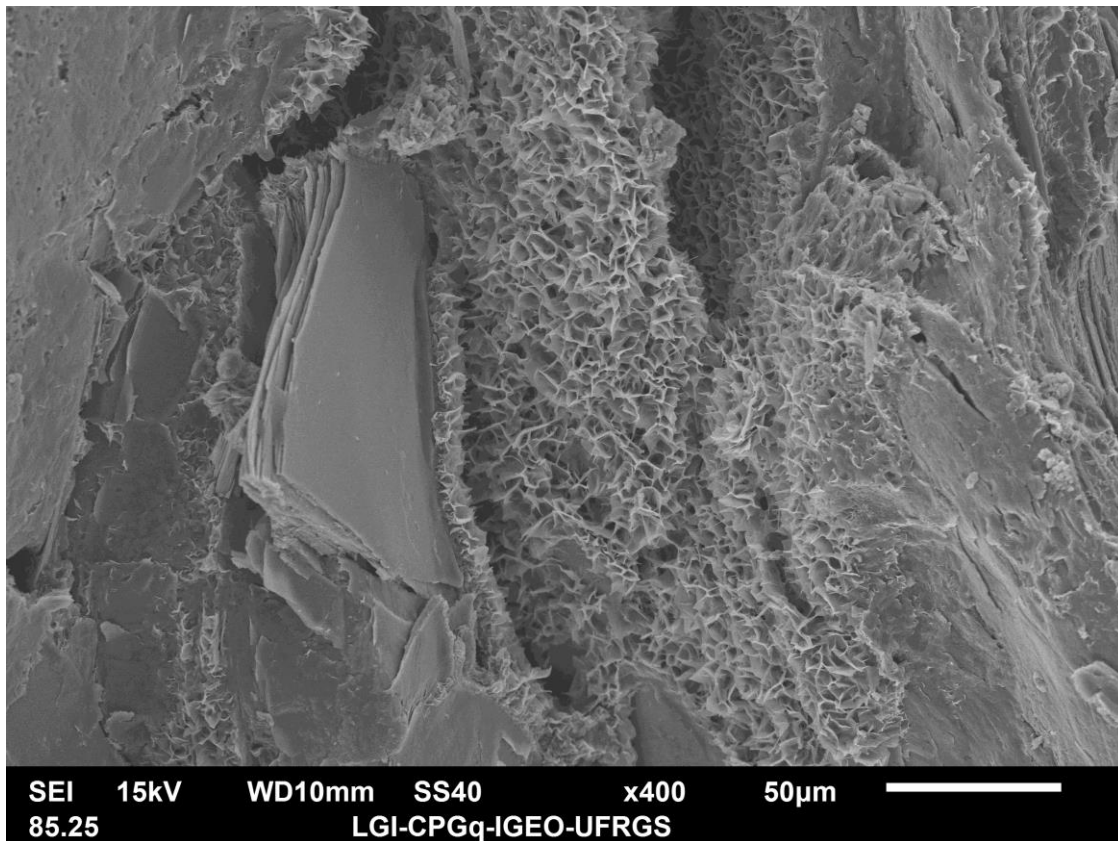
El	AN	Series	unn. C [wt.%]	norm. C [wt.%]	Atom. C [at.%]	Compound	Comp. C [wt.%]	norm. Comp. C [wt.%]	Error (1Sigma) [wt.%]
O	8	K-series	31.76	42.26	62.81		0.00	0.00	5.39
Mg	12	K-series	1.00	1.33	1.30	MgO	2.20	1.65	0.12
Al	13	K-series	9.71	12.93	11.39	Al2O3	24.42	18.35	0.53
Si	14	K-series	19.46	25.89	21.92	SiO2	55.39	41.63	0.90

Ca 20 K-series	0.73	0.97	0.58	CaO	1.36	1.02	0.10
Au 79 M-series	12.49	16.63	2.01		16.63	12.49	0.63

Total:	75.15	100.00	100.00				



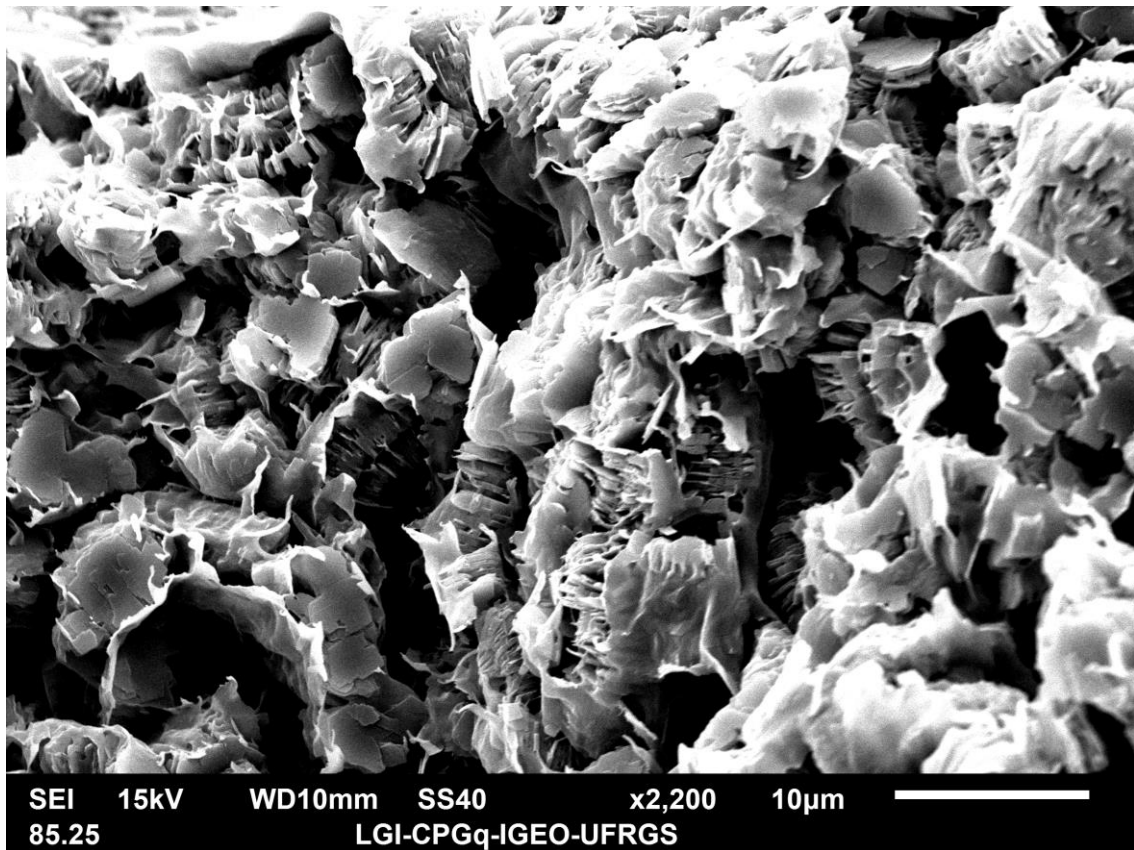
Caulinita vermicular cobrindo franjas de esmectita



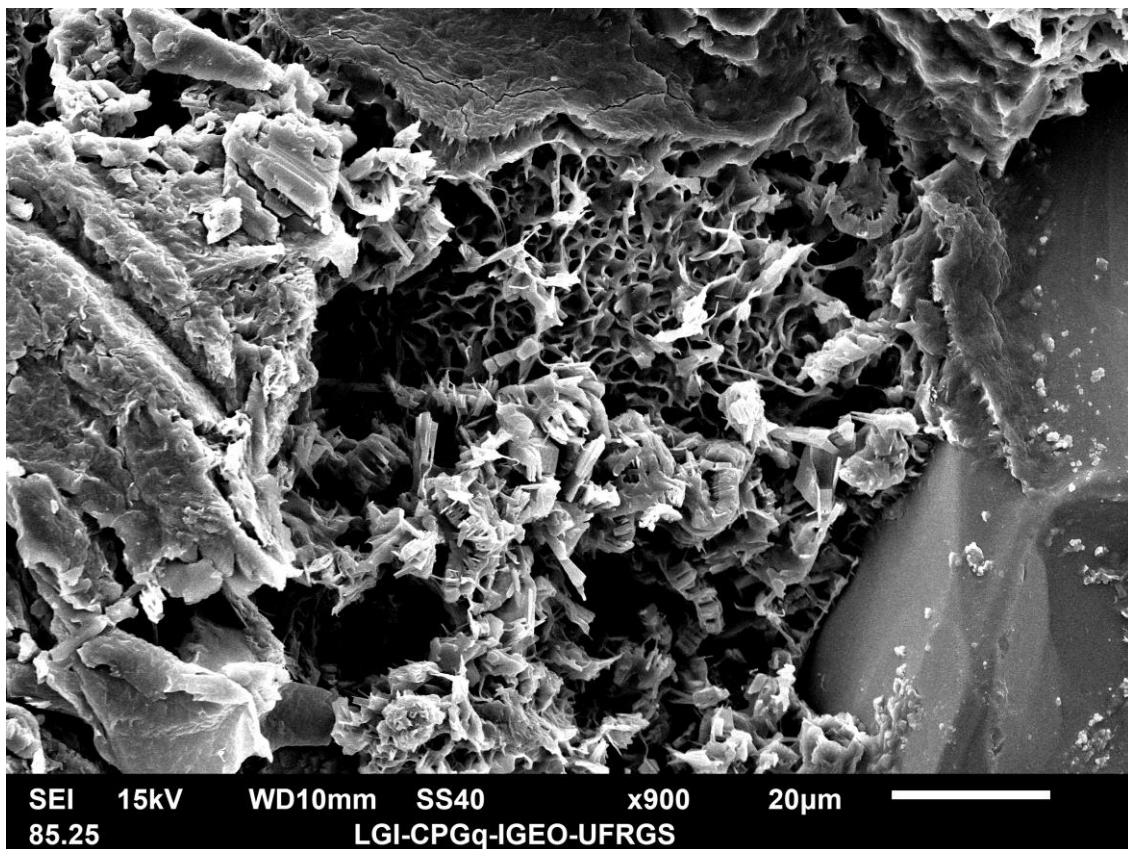
Franjas de esmectita.



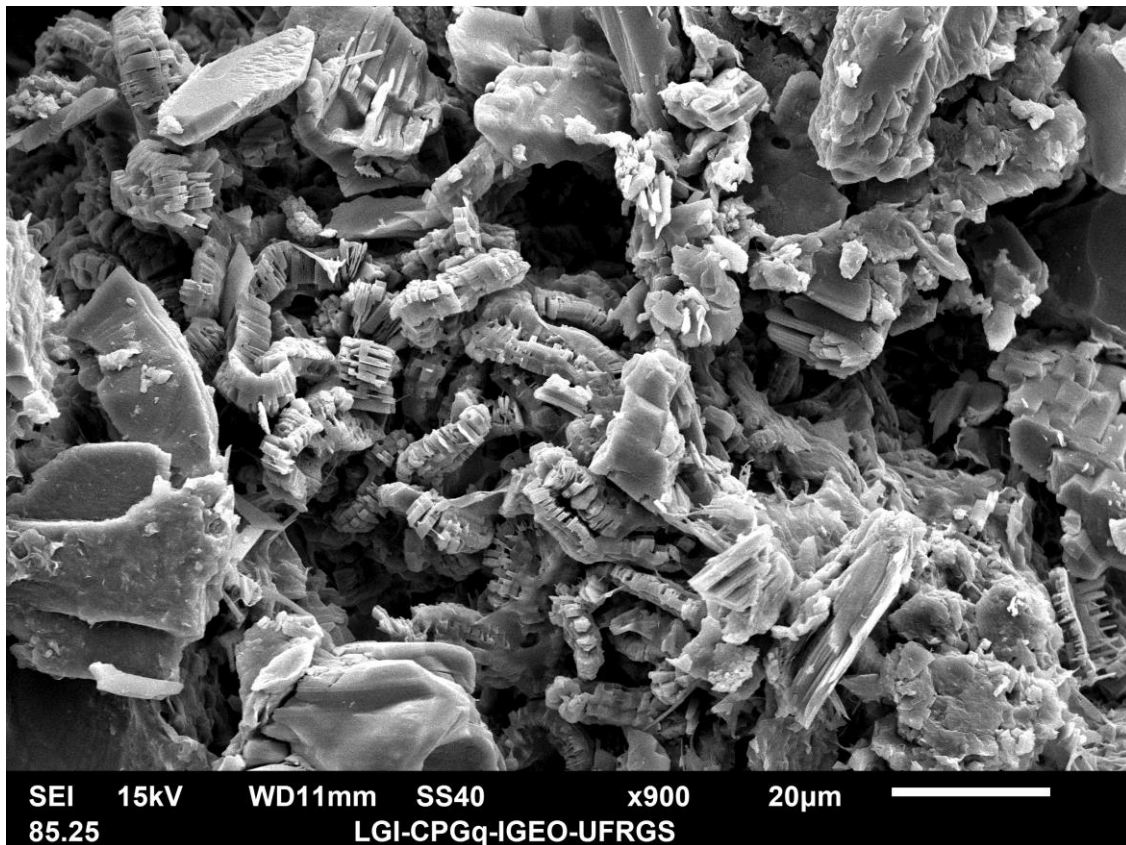
Smectite and microcrystalline calcite replacing partially dissolved grain.



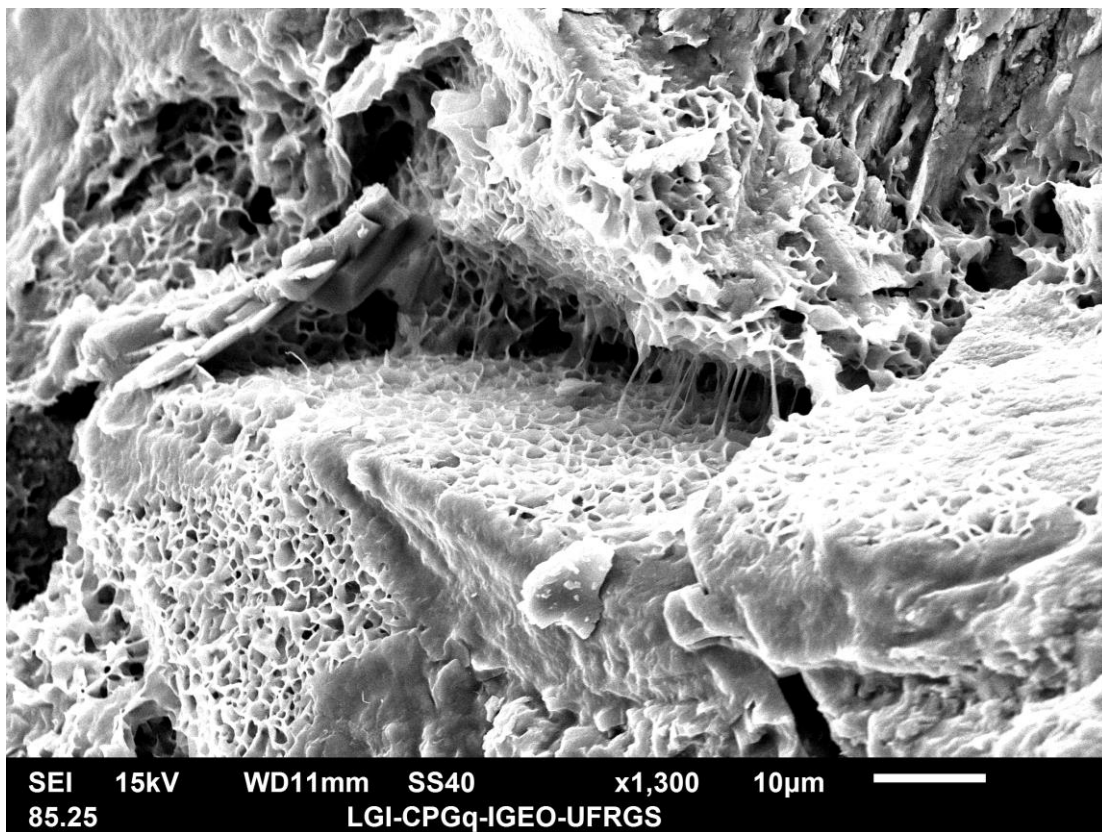
Esmeclita cobrindo caulinita vermicular.



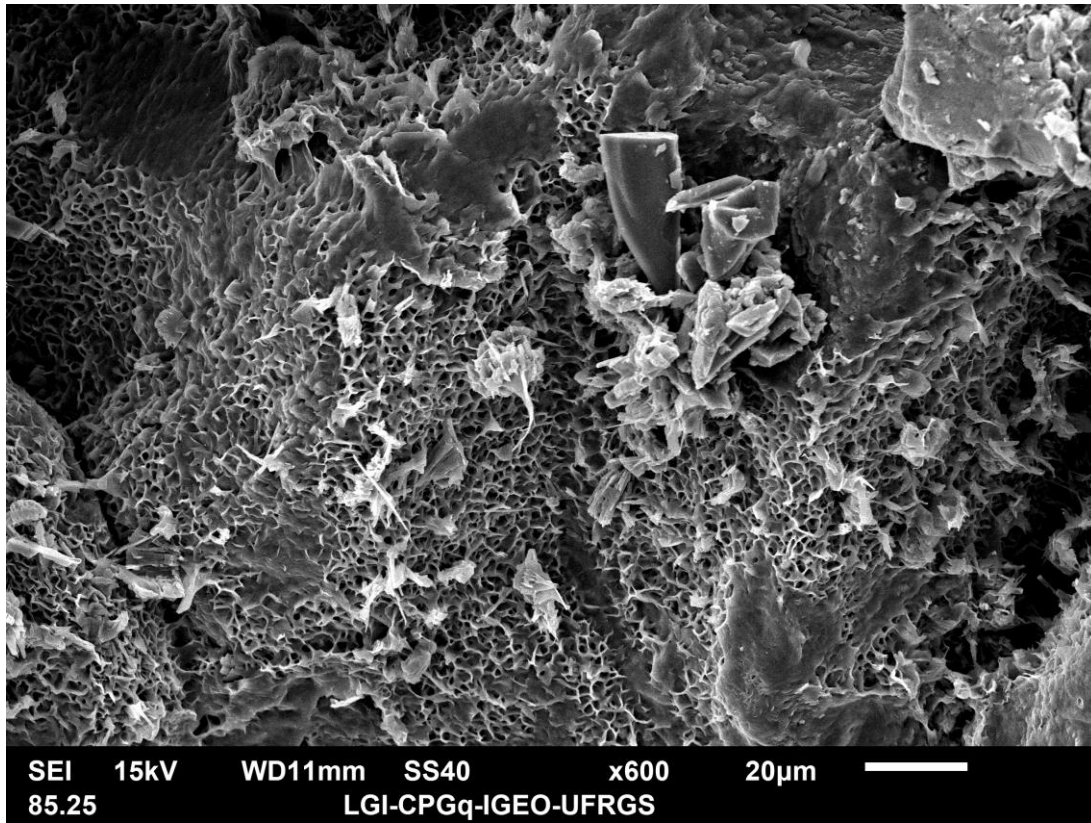
Esmeclita substituindo grão e caulinita.



Caulinita vermicular parcialmente transformada para dickita.



Ilita-esmectita.



Interestratificado illita-esmectita,