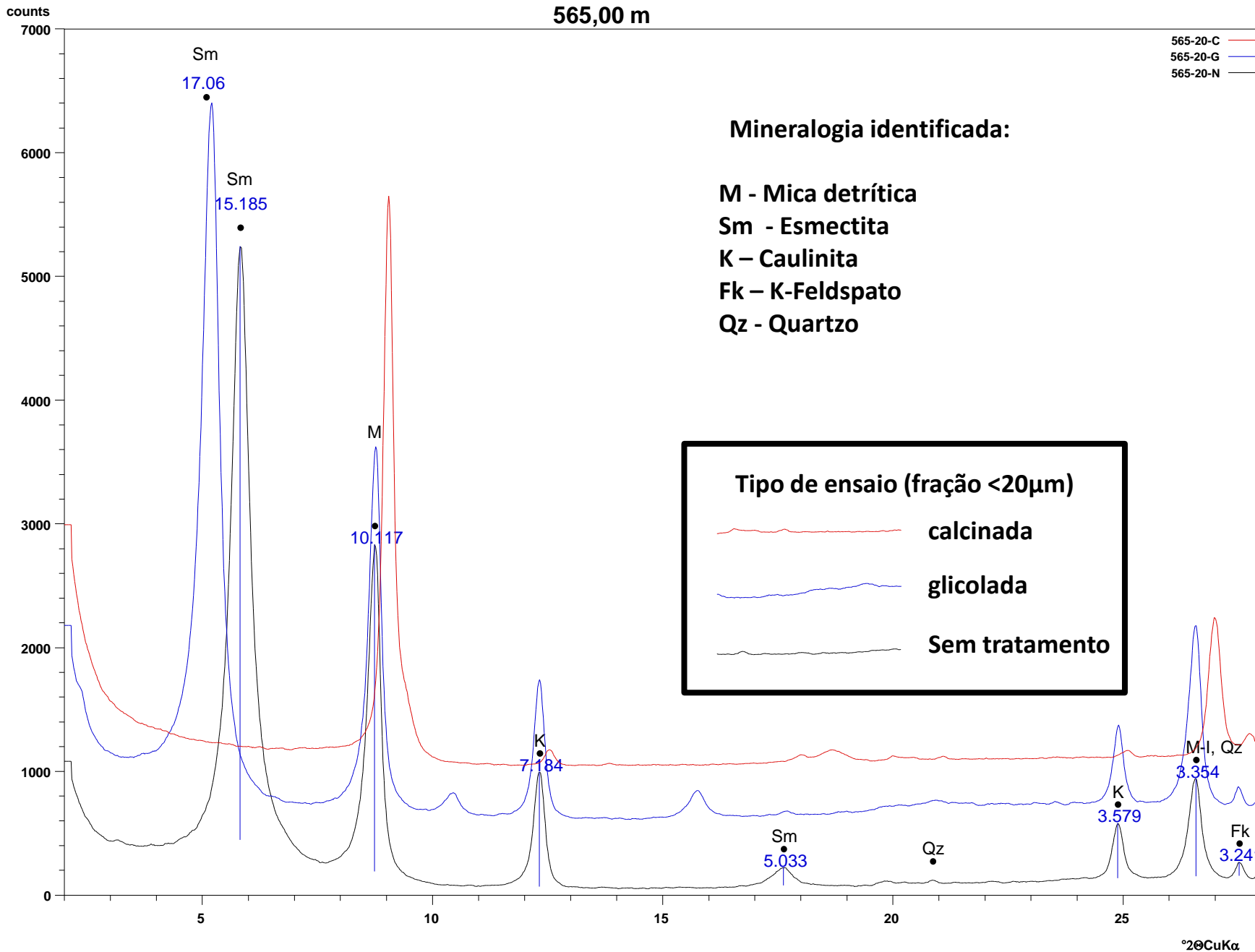
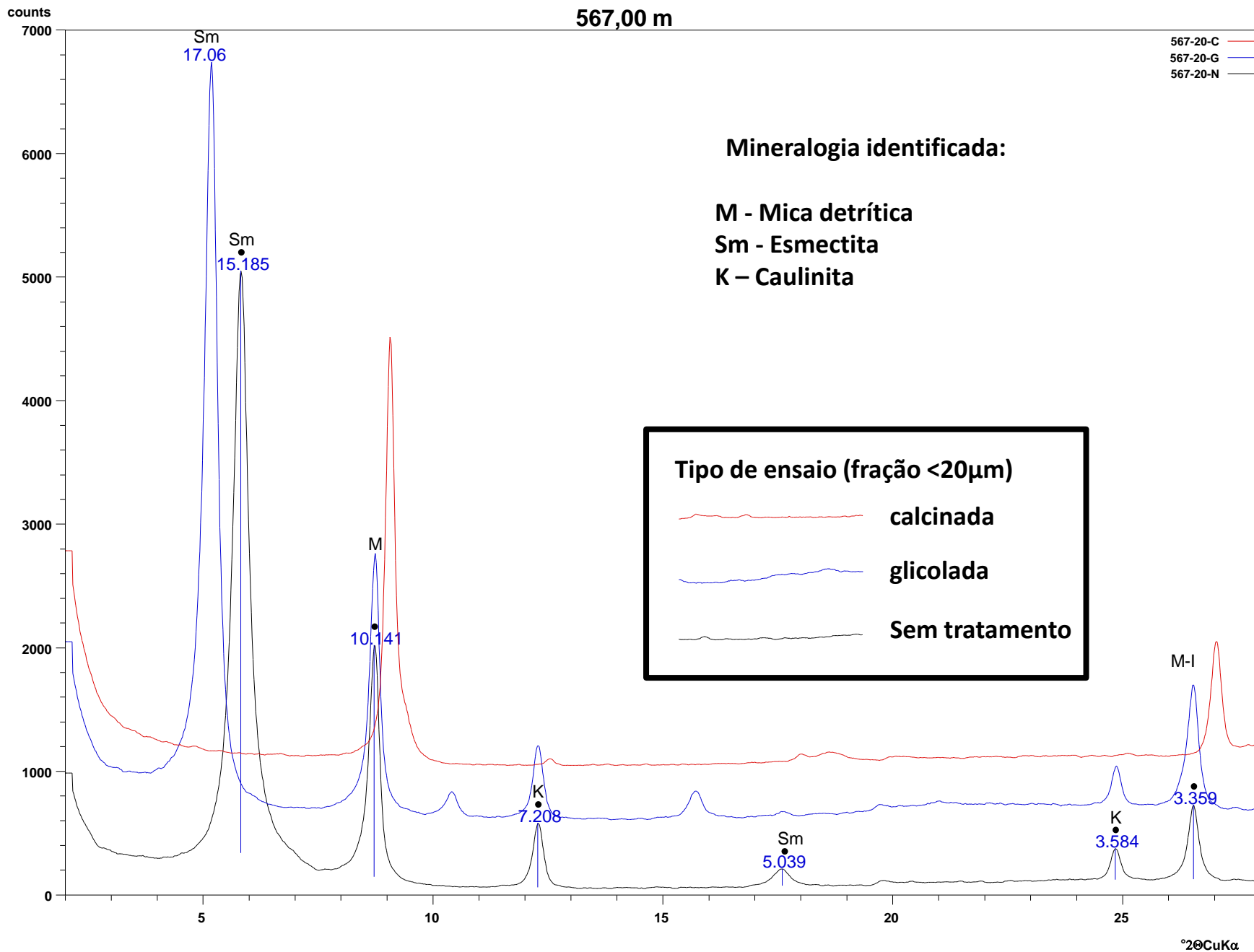


565,00 m



567,00 m



Mineralogia identificada:

M - Mica detrítica

Sm - Esmeclita

K – Caulinita

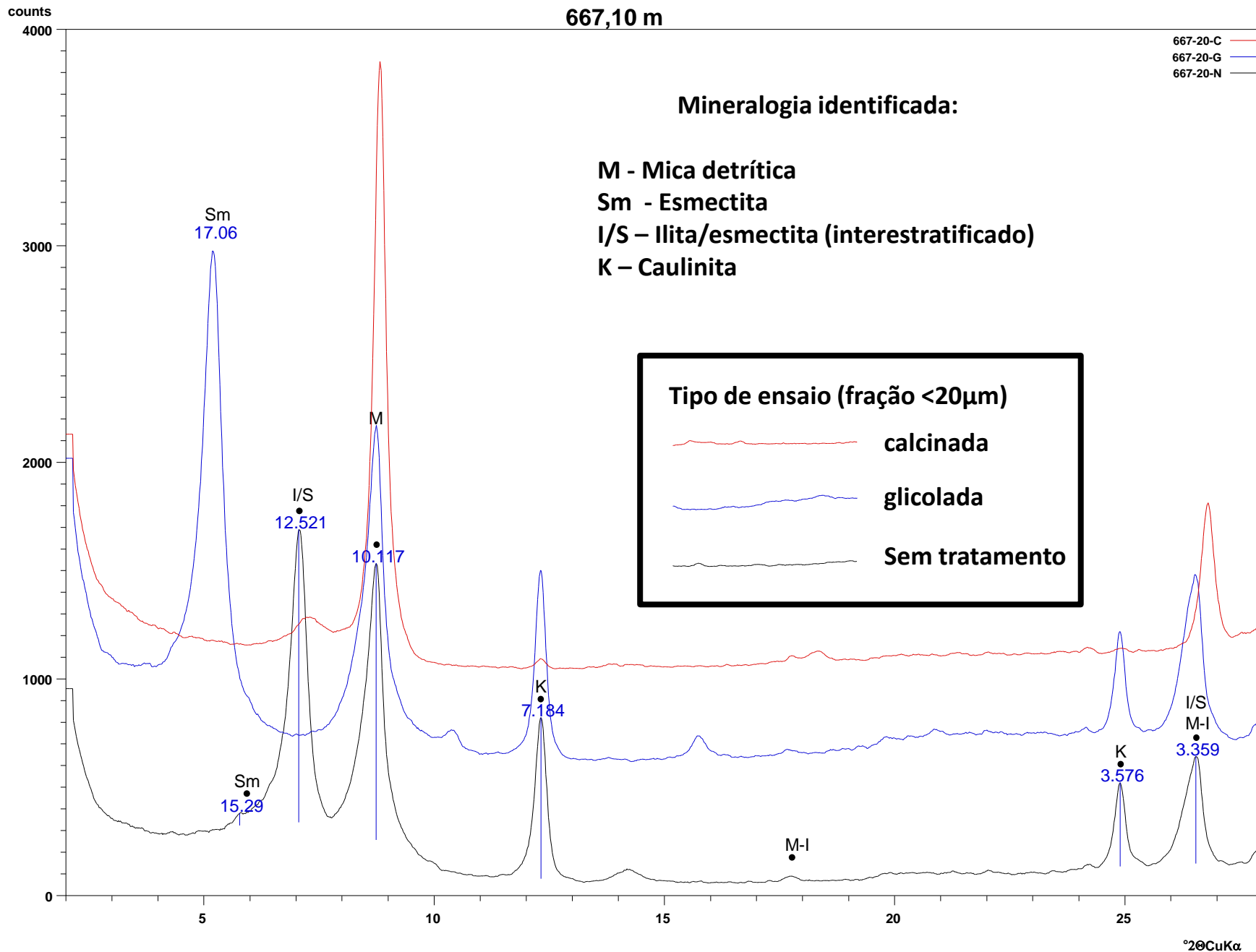
Tipo de ensaio (fração <20 μ m)

— calcificada

— glicolada

— Sem tratamento

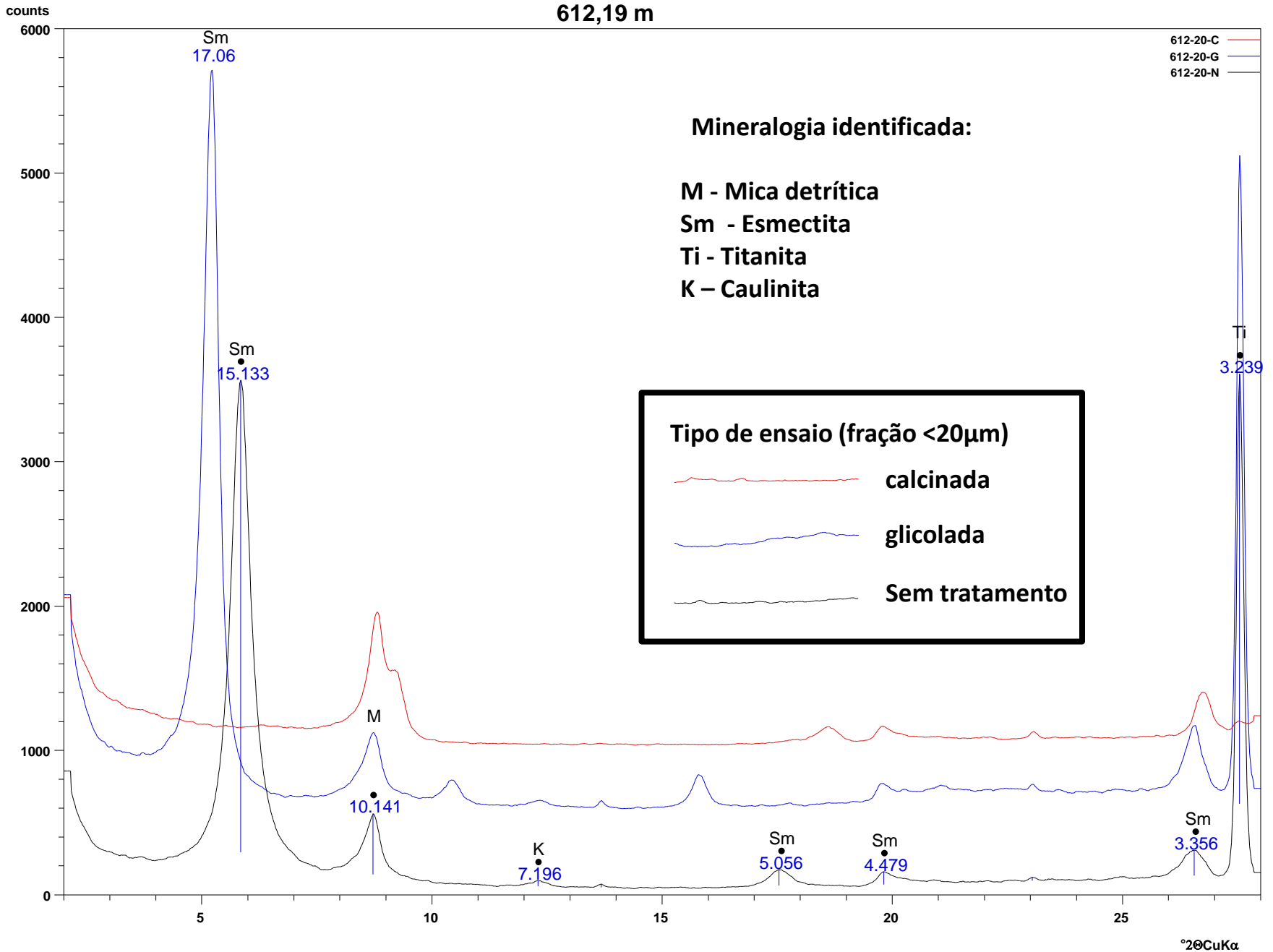
667,10 m

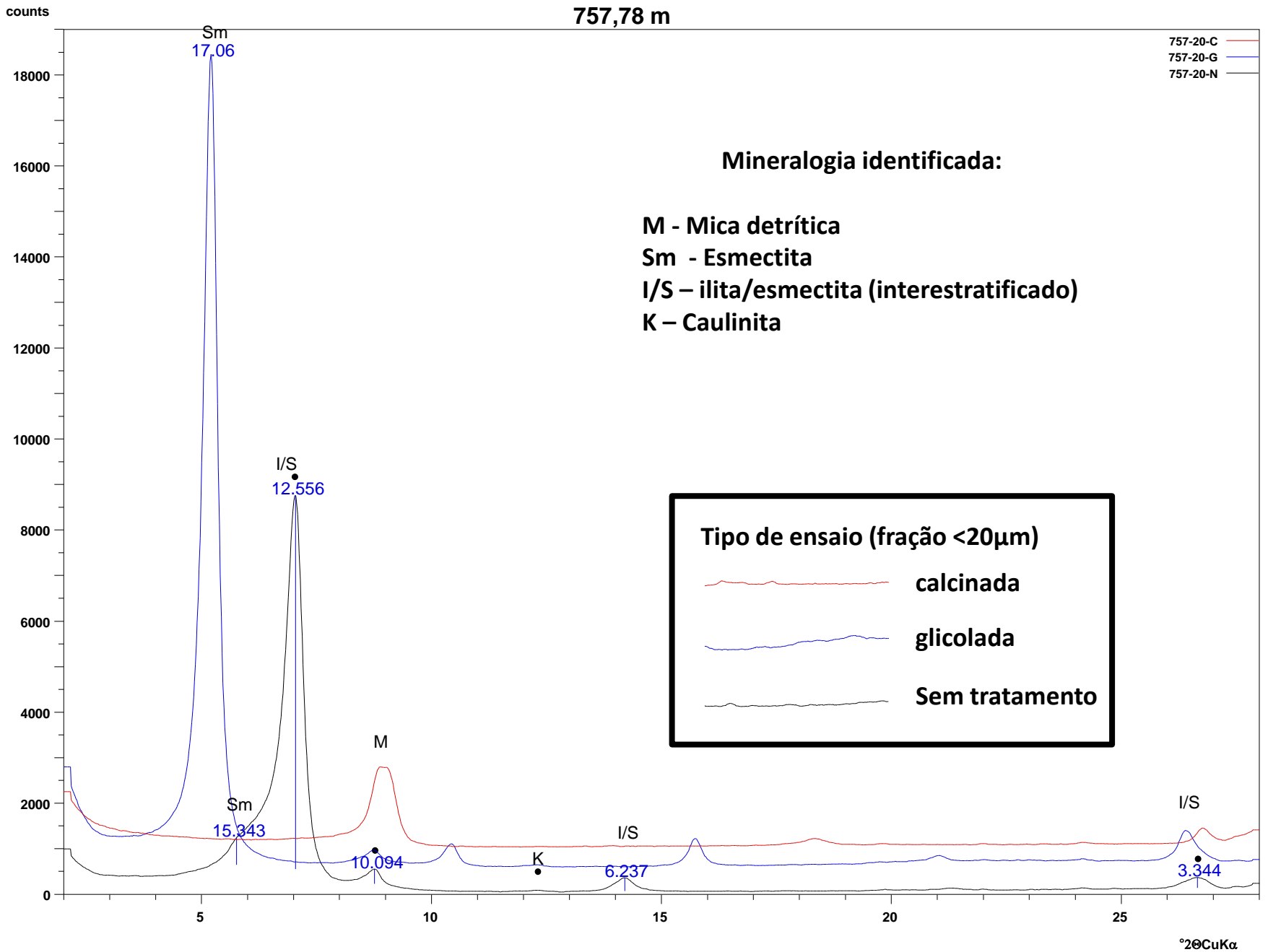


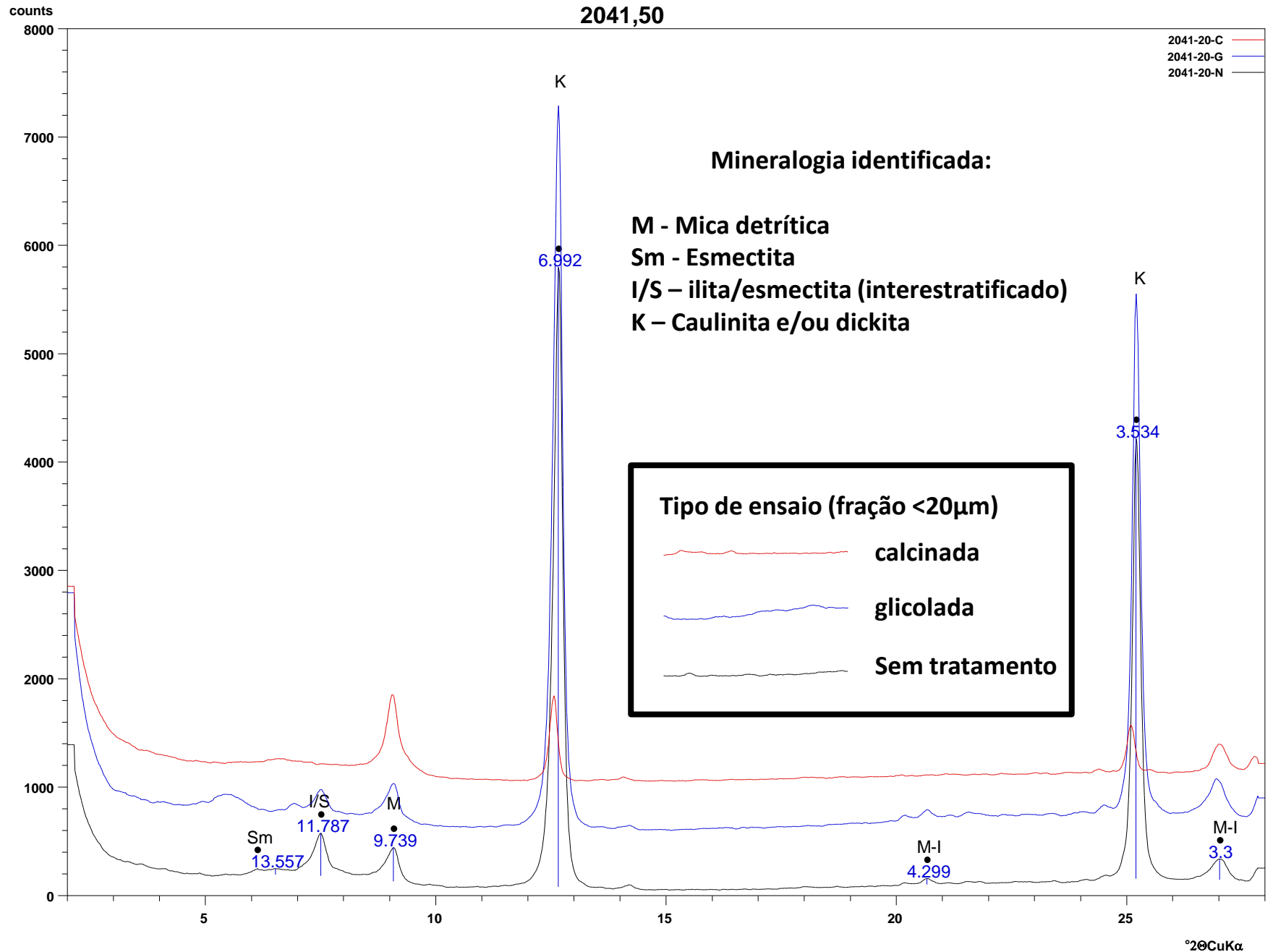
667-20-C
667-20-G
667-20-N

°2θCuKα

612,19 m







counts

2076,60 m

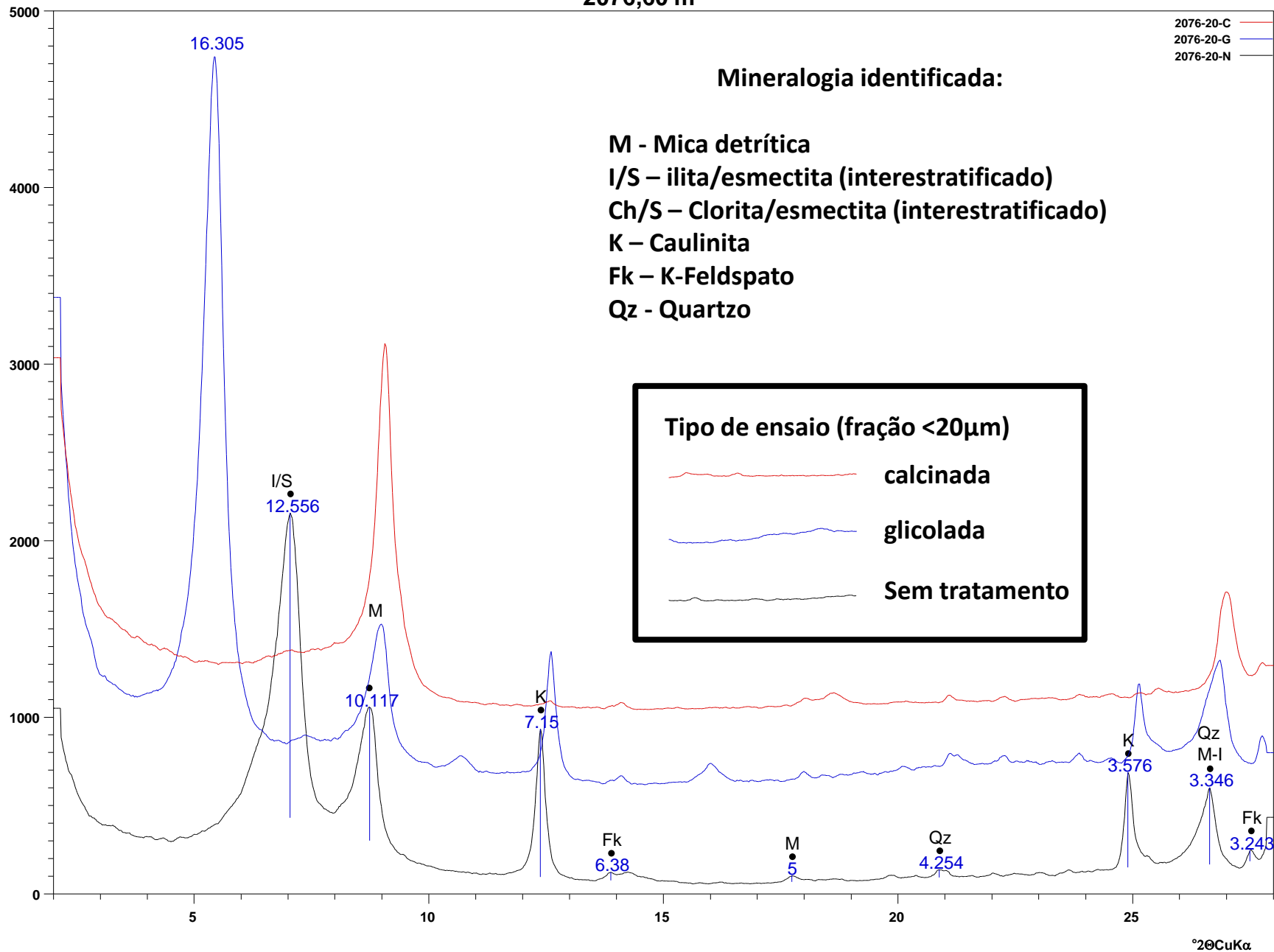
2076-20-C
2076-20-G
2076-20-N

Mineralogia identificada:

- M - Mica detrítica
- I/S – ilita/esmectita (interestratificado)
- Ch/S – Clorita/esmectita (interestratificado)
- K – Caulinita
- Fk – K-Feldspato
- Qz - Quartzo

Tipo de ensaio (fração <20µm)

- calcinada
- glicolada
- Sem tratamento



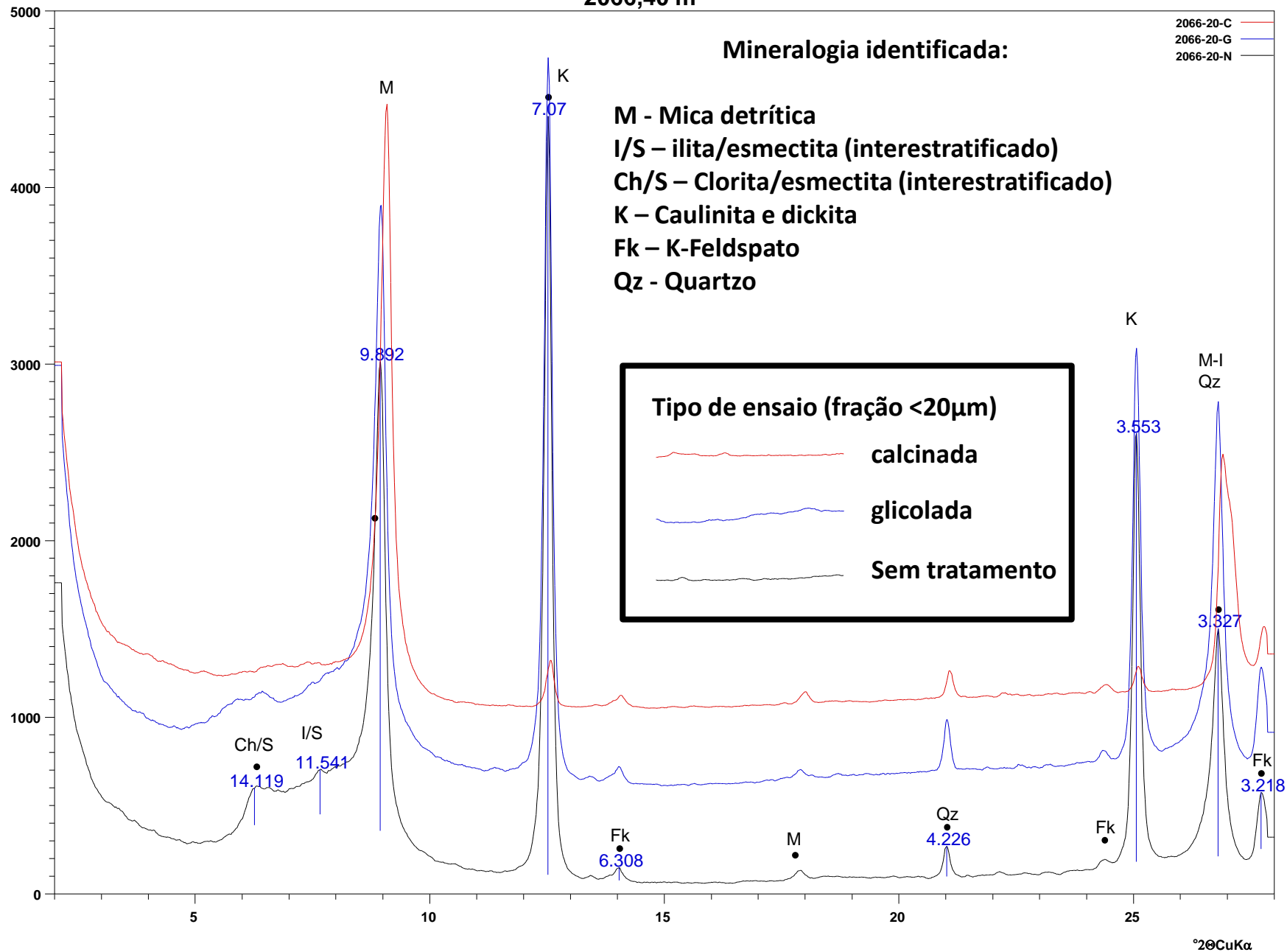
counts

2066,40 m

Mineralogia identificada:

- M - Mica detrítica
- I/S – ilita/esmectita (interestratificado)
- Ch/S – Clorita/esmectita (interestratificado)
- K – Caulinita e dickita
- Fk – K-Feldspato
- Qz - Quartzo

2066-20-C
2066-20-G
2066-20-N



1679,70 m

