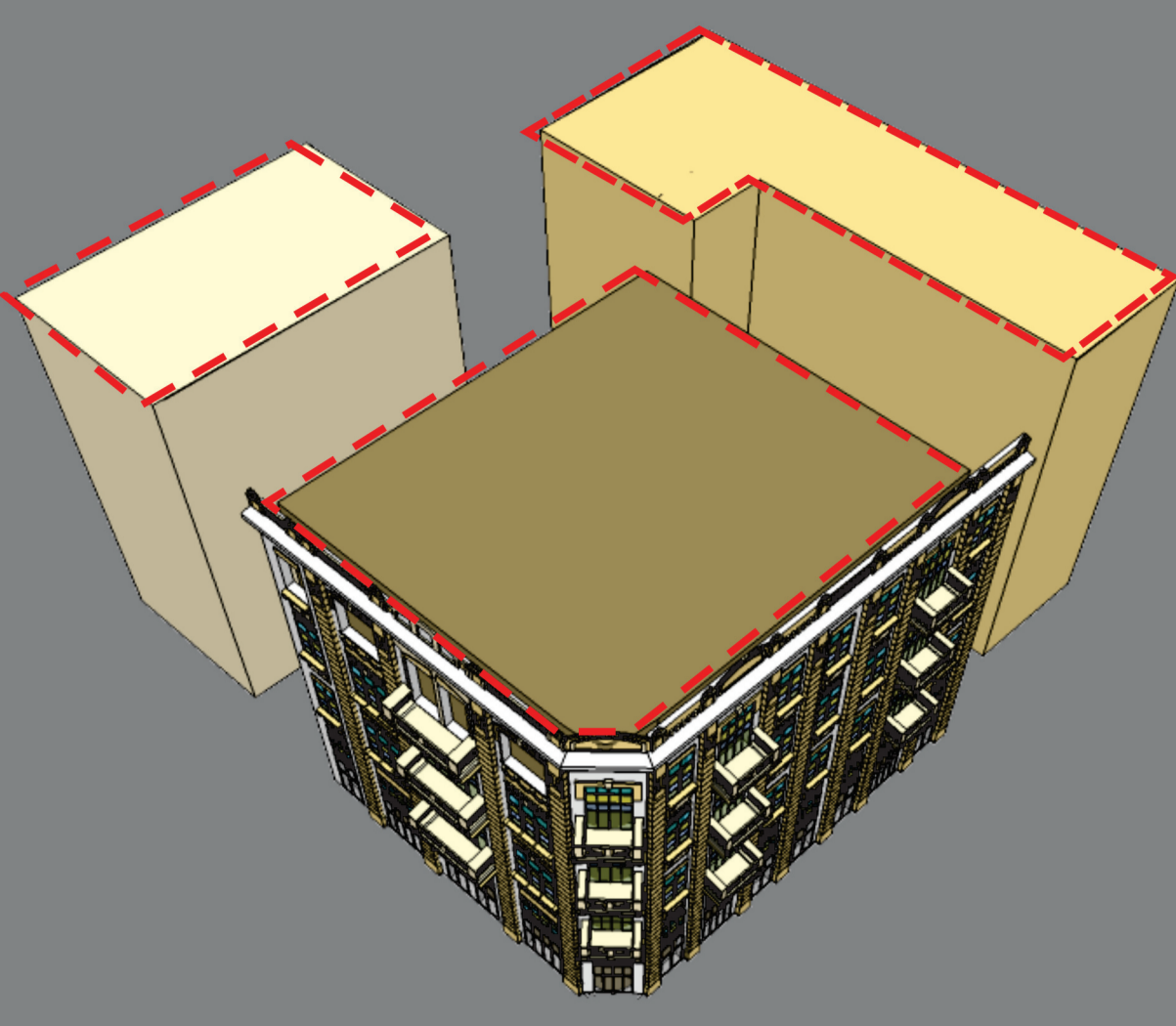
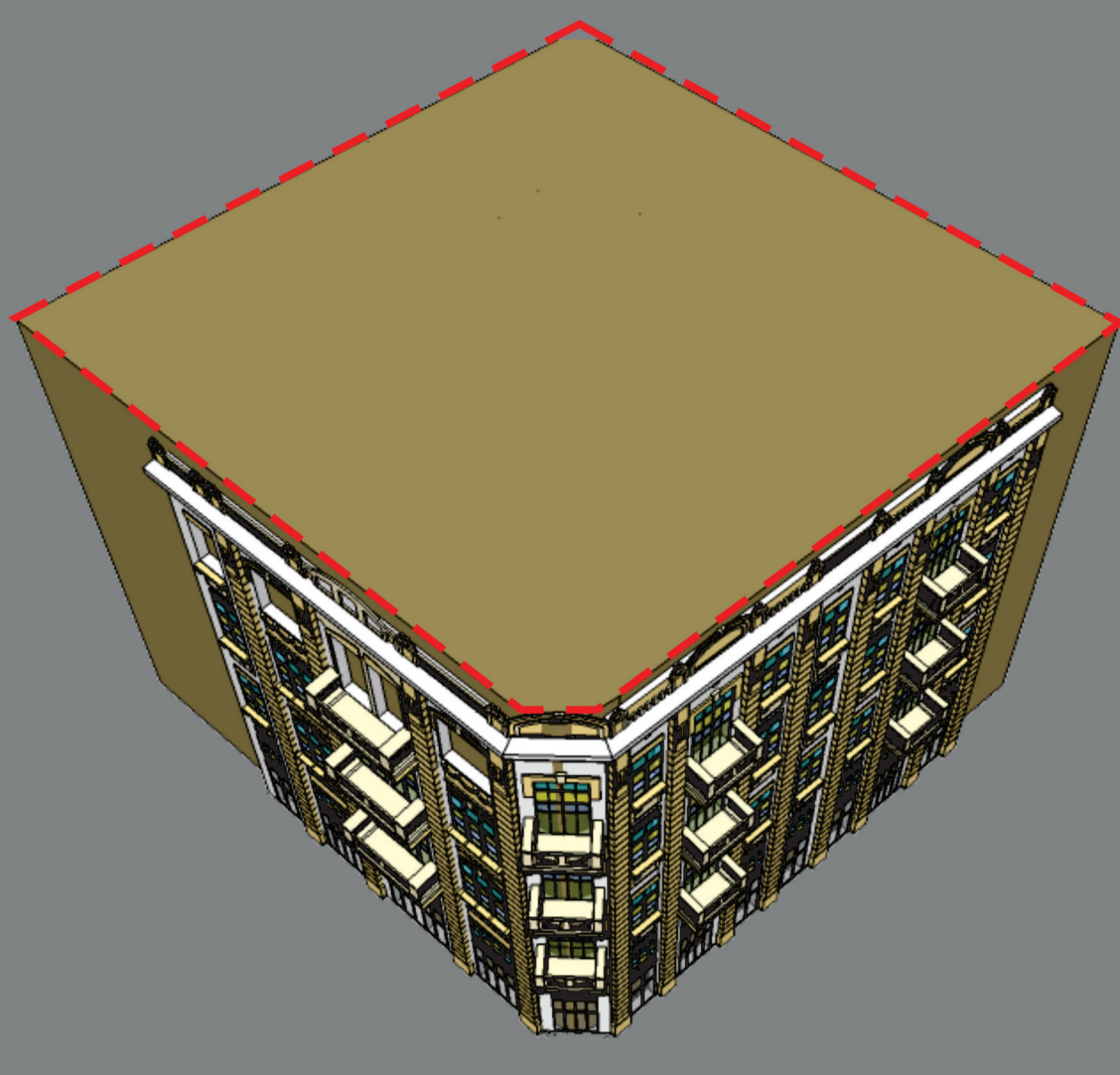


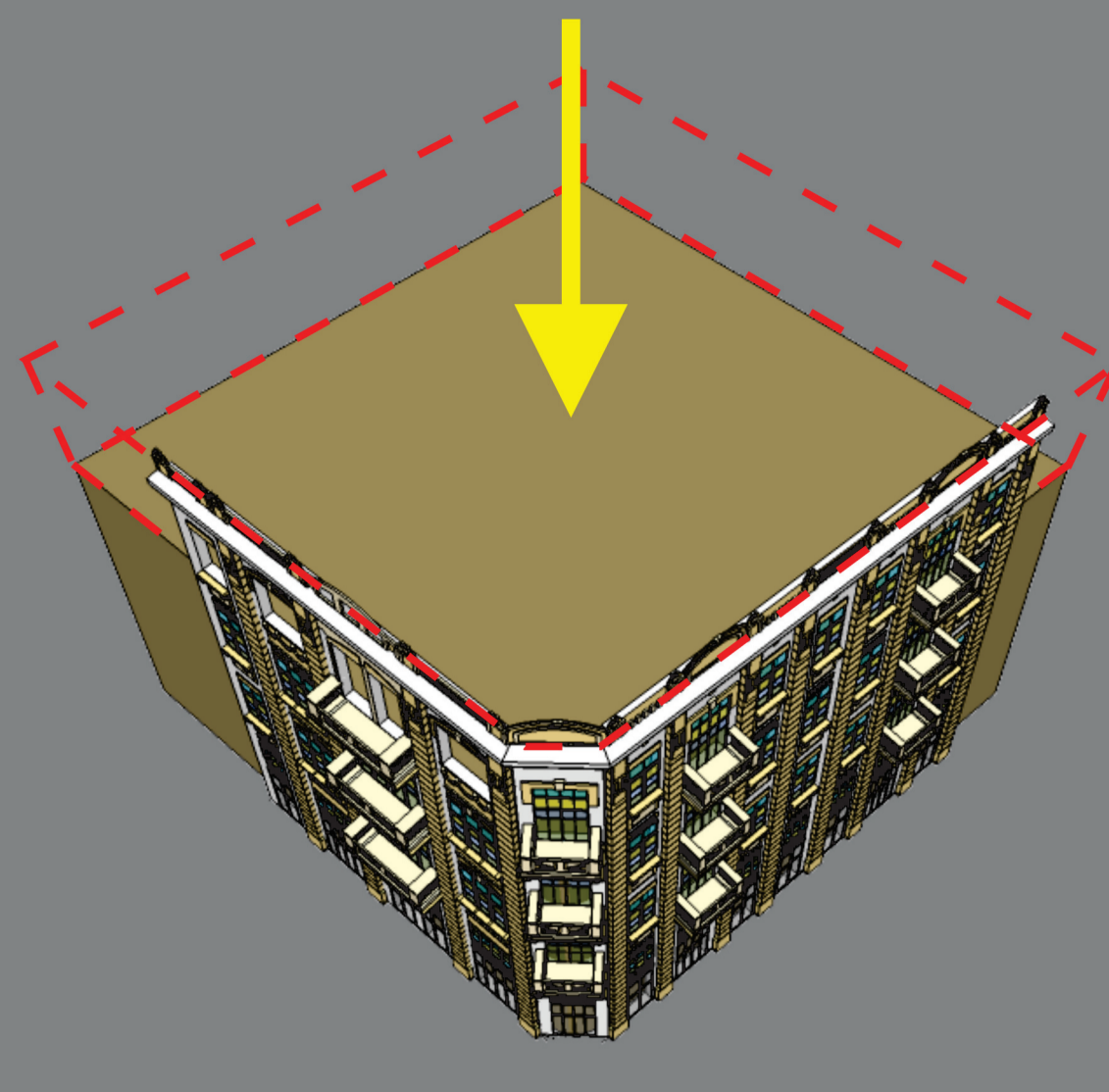
# PRINCÍPIOS COMPOSITIVOS



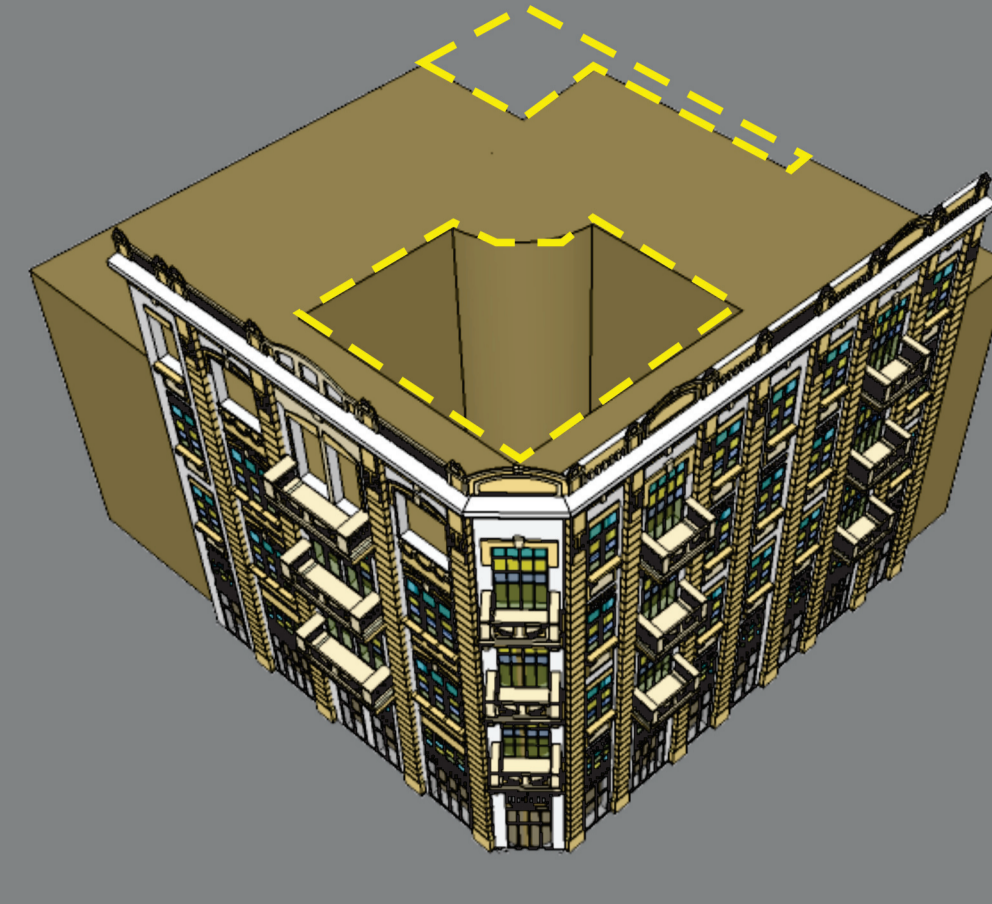
União de três volumes 'virtuais': terrenos agregados



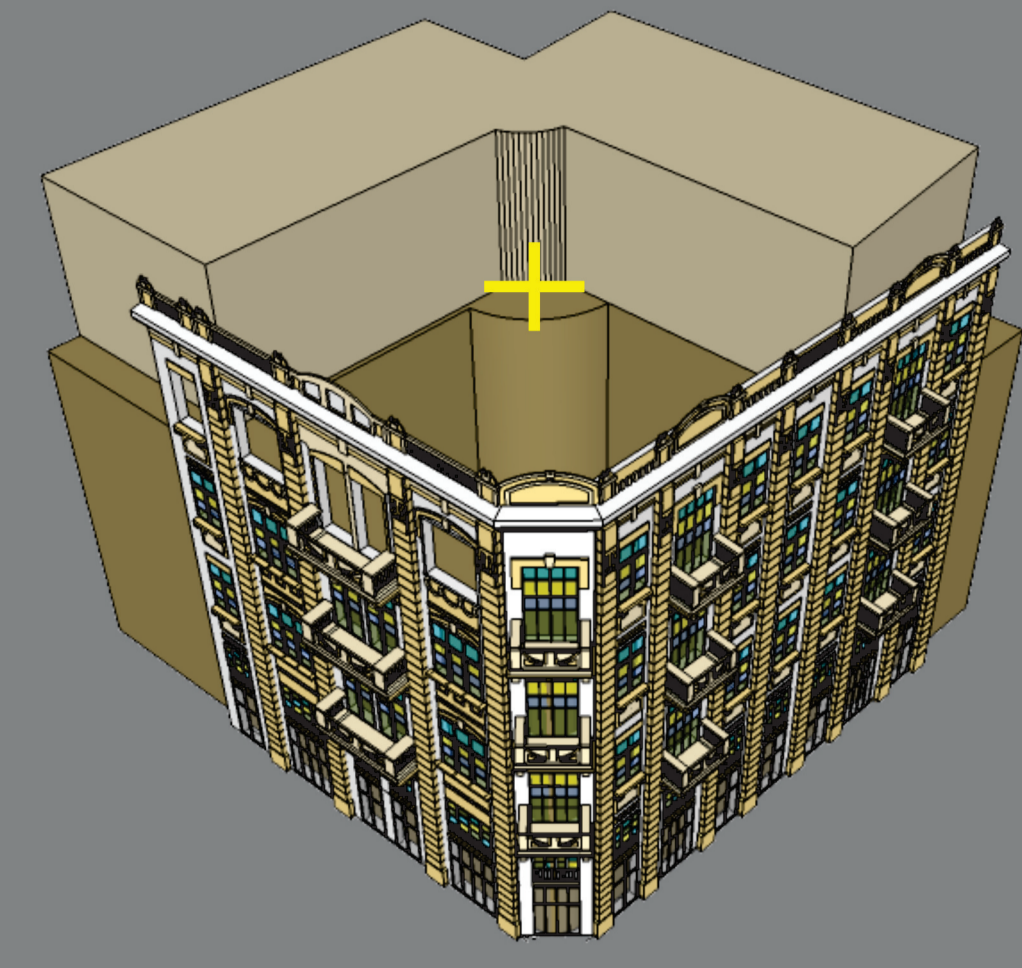
Prisma retangular: união dos volumes dos 3 terrenos



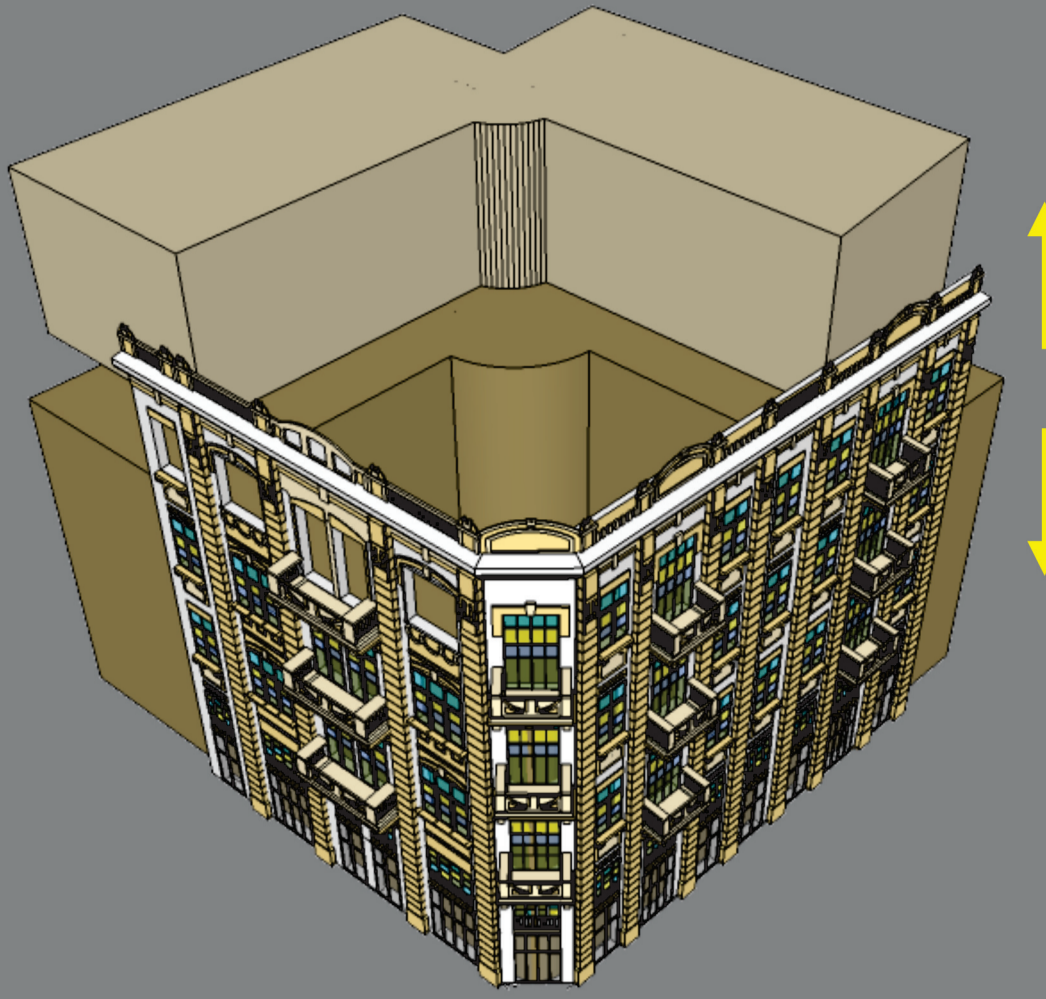
Redução do volume: liberação do último pavimento da fachada histórica



Subtração de 2 volumes: pátios



Sobreposição de volume em 'L': pavimentos tipo do flat.



Separação dos volumes: terraço semi-coberto sob área de pilotis



Fachada Norte  
esc 1:200

