

Case Report

Myofibroblastoma Arising in Mammary Hamartoma: A Case Report

**Diego M. Uchôa,¹ Dênnis Baroni Cruz,² Pedro Guilherme Schaefer,²
Karla Laís Pêgas,² and Eduardo Cambuzzi³**

¹ *Faculdade de Medicina, Universidade Federal do Rio Grande do Sul, Porto Alegre, Brazil*

² *Departamento de Patologia, Hospital de Clínicas de Porto Alegre, 2350 Porto Alegre, Brazil*

³ *Faculdade de Medicina, Universidade Luterana do Brasil, Canoas, Brazil*

Correspondence should be addressed to Diego M. Uchôa, dmudmu@gmail.com

Received 23 April 2010; Accepted 5 July 2010

Academic Editor: Gary Tse

Copyright © 2010 Diego M. Uchôa et al. This is an open access article distributed under the Creative Commons Attribution License, which permits unrestricted use, distribution, and reproduction in any medium, provided the original work is properly cited.

Myofibroblastoma (MFB) is a rare mesenchymal tumor arising in breast's soft tissue with a great variety of microscopic features that can be mistaken with a wide variety of biphasic lesions. The authors report a rare case of myofibroblastoma of the breast arising in a mammary hamartoma (MH), present a review of the clinicopathological features of these lesions, and make some diagnostic considerations. The tumour consisted of a well-circumscribed nodule. MFB component comprised about fifty percent of the lesion and was made up of bipolar spindle cells arranged in fascicular clusters separated by bands of hyalinized collagen. There were fat cells and several residual hamartoma glands intermingled and distorted in MFB area. MFB component was positive for Desmin, CD34, bcl-2, and Calponin. To the best of our knowledge, MFB has not been reported in MH, neither has any of the reports described mammary glands joined within MFB.

1. Introduction

Myofibroblastoma (MFB) is a rare mesenchymal tumor arising in breast's soft tissue [1, 2]. In 1987, Wargotz et al. [2] described a benign tumour of the breast composed of spindle cells arranged in fascicular clusters with interspersed bands of hyalinized collagen and called this lesion "myofibroblastoma". After that, several cases have subsequently been reported, and it has become clear that MFB of the breast may exhibit a greater variety of morphological features than originally described. Glandular structures have not been described in MFB [3–9].

Mammary hamartomas (MH) comprise about 0.7% of all benign breast masses that were first described in 1928 by Prym [10], who referred to them as "mastomas". Further cases were reported as adenolipomas and fibroadenolipomas. In 1971, Arrigoni was the first to introduce the term mammary hamartoma, that is further characterized by the variety of mature tissues they contain [11].

The authors report a case of MFB developed in MH. This very rare association may be a potential diagnostic pitfall in the spectrum of biphasic cell lesions of the breast. To our knowledge, the coexistence of MFB and MH in the same mass has not been published.

2. Case Report

A 59-year-old woman presented with a solitary nodule in the left breast which was first noted on routine mammography. Left breast echography showed a sharply demarcated nodule in the breast parenchyma. A complete surgical excision of the mass was performed.

Gross pathology showed a well-circumscribed, round to slightly lobulated, tan, rubbery, 2.5 cm nodule. On cut sections, a whitish tumour mass with scanty interspersed yellow areas was evident. Microscopically, the tumour had pushing borders and was circumscribed by a pseudocapsule. At scanning magnification, we noticed two distinct tumoral

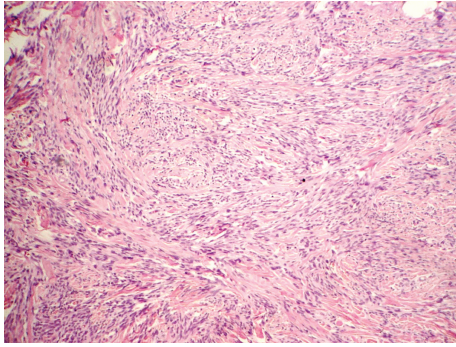


FIGURE 1: Mammary myofibroblastoma: the lesion shows bundles of slender, uniform, spindle shaped cells typically arranged in clusters and bands of hyalinized collagen distributed throughout the tumor, HE, 100x.

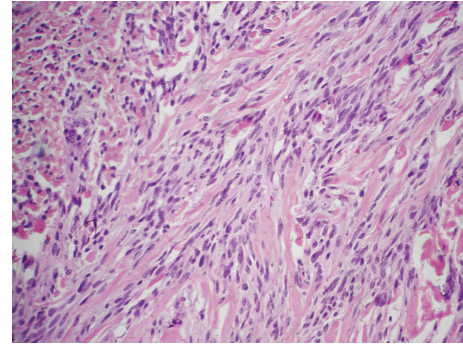


FIGURE 3: Mammary myofibroblastoma: tumor composed of a homogeneous population of spindle-shaped cells with ovoid nuclei and pale cytoplasm, HE, 400x.

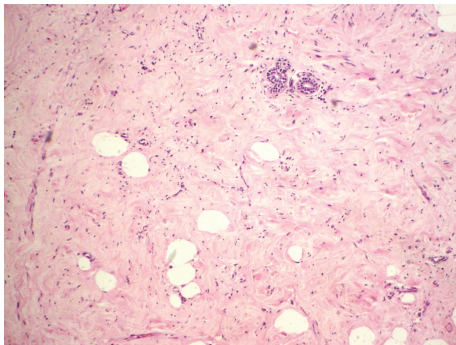


FIGURE 2: Mammary hamartoma: the process is composed of mammary glandular tissue with a lobular arrangement, fibrous stroma, and adipose tissue in variable proportions, HE, 100x.

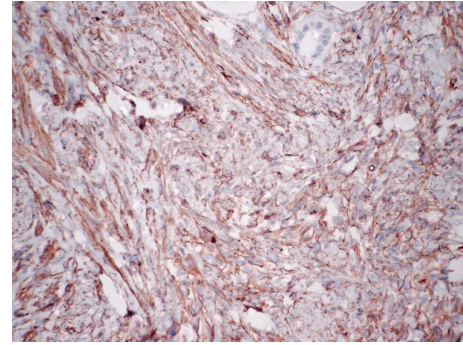


FIGURE 4: Positive immunoreactivity for CD34 in mammary myofibroblastoma, avidin-biotin technique, 100x.

regions. In the “hypercellular area”, classic features of myofibroblastoma of breast were present (Figure 1). The “hypocellular area” revealed a lesion containing scattered epithelial elements embedded in collagenized stroma, typical of mammary hamartoma (Figure 2). The MFB area was composed of bundles of spindle cells with eosinophilic cytoplasm and elongated monomorphic nuclei, adopting a fascicular arrangement and separated by thick collagenous stromal bands (Figure 3). In the stroma, there were scant mature adipocytes, large numbers of mast cells, occasional lymphoid aggregates, and several residual benign-appearing glands. The epithelial elements “entrapped” in the MFB area were not different from the other ones scattered in the MH area. The MFB-MH transitional area was subtle. No mitotic figures, atypical cells, areas of necrosis, smooth muscle, or cartilaginous differentiation were observed. The immunohistochemical profile of MFB component revealed the strong and diffuse staining for Vimentin, Desmin, and CD34 (Figure 4) and focal positivity for Calponin (Figure 5) and bcl-2. Alpha-smooth muscle actin, Actin, S-100 protein, and CD99 and CD10 were negative. The stroma of MH showed diffuse staining for vimentin, and the epithelial elements revealed strong CK7 positivity and focal positivity for bcl-2. Cytokeratin 7 highlighted several residual hamartoma

glands admixed to the MFB area. In addition, myoepithelial cells of hamartoma glands were easily identified. There was variable immunoreactivity for Alpha-smooth muscle actin, Calponin, Actin, S-100 protein, and CD10. No recurrence or other complaints have been experienced after a 1-year followup period.

3. Discussion

Primary mesenchymal neoplasms of the breast parenchyma like myofibroblastoma are extremely uncommon, representing less than 1% of mammary neoplasms [1–3]. MFB occurs in the breast of women between 40 and 80 years, referring to a solitary slowly growing nodule. Macroscopically, it is a well-circumscribed encapsulated tumor ranging in size from 1,0 cm to 10 cm. Histologically, MFB is an expansile tumor with pushing borders, composed of spindle to oval cells arranged in short, intersecting fascicles, and interrupted by thick bands of collagen. The cells have relatively abundant, ill-defined, eosinophilic cytoplasm with a round to oval nucleus. Necrosis is usually absent. There is a low mitotic index, and it is uncommon entrapment of mammary ducts or lobules within the tumor. Scattered mast cells may be seen in the stroma. The neoplastic cells are usually

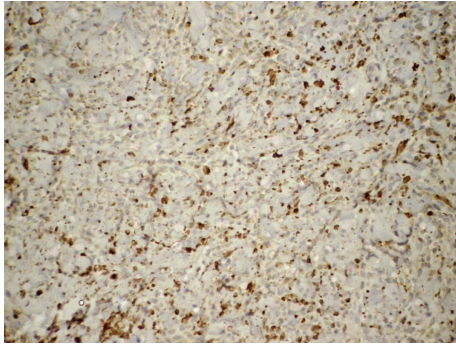


FIGURE 5: Positive immunoreactivity for calponin in mammary myofibroblastoma, avidin-biotin technique, 100x.

immunopositive for vimentin, desmin, CD34, and alpha-smooth muscle actin. There is variable immunostaining for bcl-2 protein, CD99, and estrogen and progesterone receptors. Some cases can show lipomatous, smooth muscle, or cartilaginous components [3, 6–9].

MFB may exhibit a great variety of morphological features, including infiltrating margins and epithelioid component, that can be similar to other spindle-cell benign tumours of the breast, like solitary fibrous tumour (SFT) and spindle cell lipoma (SCL) [2, 3, 7–9]. Mammary MFB and SCL usually have abundant stromal mast cells, and the spindle cells are CD34-positive, but the former is typically positive for desmin. MFB consistently expresses positive muscle immunomarkers in contrary with SFT. Additional evidence of a histologic continuum between MFB, SCL, and SFT has been provided by other reports employing bcl-2, CD10 and CD99 antibodies [3, 6–9]. The MFB spindle-cell area of our tumour expressed bcl2, but not CD10 and CD99 like others reported [3, 6–9].

MH is further characterized by the presence of a dense hyalinized fibrotic stroma, interlobular fibrosis, variable volume of mature adipose tissue, and pseudoangiomatous hyperplasia [1, 3, 5, 11, 12]. In our paper, the MH area of the breast lump showed all of these features. There are several reports describing primary ductal or lobular breast cancer arising in MH, but neither of these had yet published a fusiform neoplasia arising within MH [1–3, 5, 13, 14].

Because glandular structures interspersed within MFB are a very rare unpublished finding, some biphasic lesions of the breast, such as adenomyoepithelioma (AME), phyllodes tumor (PT), or even cellular fibroadenoma (CFA), have never been regarded in the differential diagnosis of MFB. So, this unique tumor association (MFB in MH) may be a potential diagnostic pitfall in the spectrum of biphasic cell lesions of the breast [3, 14–19]. The fusiform components of both lesions (CFA and PT) do not show bundles of spindle cells in a fascicular arrangement separated by thick collagen fibers, neither do they have the typical strong and diffuse staining for Desmin and CD34 expressed by MFB spindle cells. Adenomyoepitheliomas usually do not exhibit the thicker bands of hyalinized collagen and are negative for CD34. Entrapped fat cells virtually do not occur in AME too, but mast cells have been found [3, 7, 13, 16, 17, 19].

The differential diagnosis of MFB of the breast can include other reactive processes and benign neoplasms such as nodular fasciitis, fibromatosis, neurofibroma, leiomyoma, stromal sarcoma, malignant fibrous histiocytoma, metaplastic carcinoma, spindle cell liposarcoma, low-grade malignant peripheral nerve sheath tumor, and dermatofibrosarcoma protuberans [2–4, 7, 9, 16, 17].

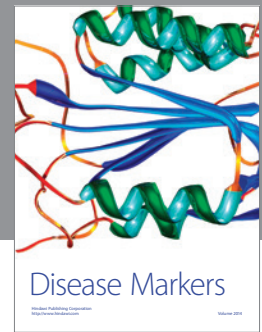
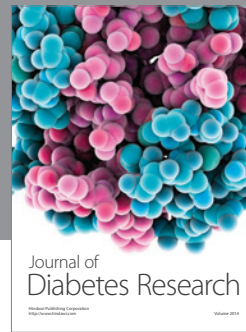
4. Conclusion

Herein, we report a rare case of MFB developed in MH. To the best of our knowledge, this peculiar morphological finding has not been previously reported yet. This very rare association may be a potential diagnostic pitfall in the spectrum of biphasic cell lesions of the breast. The immunohistochemical study of the lesion will be useful. Nevertheless, the simple histologic examination of the entire lesion straightforward turned our diagnosis. In the present nodule, there was a large typical MH area comprising about fifty percent of the mass. Therefore, it was somewhat logical to presume that the entrapped epithelial elements in the MFB component were vestiges of the MH. It could be very difficult to be sure about MFB with entrapped hamartoma epithelial elements without the entire analysis of our tumor.

References

- [1] C. Toker, C. Tang, F. Whitely, S. W. Berkheiser, and R. Rachman, "Benign spindle cell breast tumor," *Cancer*, vol. 48, no. 7, pp. 1615–1622, 1981.
- [2] E. S. Wargotz, S. W. Weiss, and H. J. Norris, "Myofibroblastoma of the breast: sixteen cases of a distinctive benign mesenchymal tumor," *American Journal of Surgical Pathology*, vol. 11, no. 7, pp. 493–502, 1987.
- [3] F. A. Tavassoli and P. Devilee, *Tumours of the Breast and Female Genital Organs*, World Health Organization Classification of Tumours-Pathology and Genetics, IARC Press, Lyon, France, 2003.
- [4] F. Maggiani, M. Debiec-Rychter, G. Verbeeck, and R. Sciot, "Extramammary myofibroblastoma is genetically related to spindle cell lipoma," *Virchows Archiv*, vol. 449, no. 2, pp. 244–247, 2006.
- [5] C. Charpin, M. P. Mathoulin, L. Andrac et al., "Reappraisal of breast hamartomas: a morphological study of 41 cases," *Pathology Research and Practice*, vol. 190, no. 4, pp. 362–371, 1994.
- [6] G. Magro, M. Bisceglia, and M. Michal, "Expression of steroid hormone receptors, their regulated proteins, and bcl-2 protein in myofibroblastoma of the breast," *Histopathology*, vol. 36, no. 6, pp. 515–521, 2000.
- [7] G. Magro, M. Bisceglia, M. Michal, and V. Eusebi, "Spindle cell lipoma-like tumor, solitary fibrous tumor and myofibroblastoma of the breast: a clinico-pathological analysis of 13 cases in favor of a unifying histogenetic concept," *Virchows Archiv*, vol. 440, no. 3, pp. 249–260, 2002.
- [8] G. Magro, R. Caltabiano, A. Di Cataldo, and L. Puzzo, "CD10 is expressed by mammary myofibroblastoma and spindle cell lipoma of soft tissue: an additional evidence of their histogenetic linking," *Virchows Archiv*, vol. 450, no. 6, pp. 727–728, 2007.

- [9] D. R. Salomão, T. B. Crotty, and A. G. Nascimento, "Myofibroblastoma and solitary fibrous tumour of the breast: hispathologic and immunohistochemical studies," *Breast*, vol. 10, no. 1, pp. 49–54, 2001.
- [10] P. Prym, "Pseudoadenome, Adenome and Mastome der weiblichen Brustdrüse über die Entstehung umschriebener adenomähnlicher Herde in die Mamma und über die Nachahmung des Brustdrüsengewebes durch echte Adenome und Fibroadenome," *Beitr Pathol Anat Pathol*, vol. 81, p. 221, 1928.
- [11] M. G. Arrigoni, M. B. Dockerty, and E. S. Judd, "The identification and treatment of mammary hamartoma," *Surgery Gynecology and Obstetrics*, vol. 133, no. 4, pp. 577–582, 1971.
- [12] V. Stafyla, N. Kotsifopoulos, K. Grigoriadis, C. N. Bakoyiannis, G. Peros, and G. H. Sakorafas, "Myoid hamartoma of the breast: a case report and review of the literature," *Breast Journal*, vol. 13, no. 1, pp. 85–87, 2007.
- [13] L. Di Tommaso, G. Pasquinelli, and S. Damiani, "Smooth muscle cell differentiation in mammary stromo-epithelial lesions with evidence of a dual origin: stromal myofibroblasts and myoepithelial cells," *Histopathology*, vol. 42, no. 5, pp. 448–456, 2003.
- [14] G. Magro, M. Michal, E. Vasquez, and M. Bisceglia, "Lipomatous myofibroblastoma: a potential diagnostic pitfall in the spectrum of the spindle cell lesions of the breast," *Virchows Archiv*, vol. 437, no. 5, pp. 540–544, 2000.
- [15] J. S. Silverman and A. Tamsen, "Mammary fibroadenoma and some phyllodes tumour stroma are composed of CD34+ fibroblasts and factor XIIIa+ dendrophages," *Histopathology*, vol. 29, no. 5, pp. 411–419, 1996.
- [16] G. Magro, M. Michal, and M. Bisceglia, "Benign spindle cell tumors of the mammary stroma: diagnostic criteria, classification, and histogenesis," *Pathology Research and Practice*, vol. 197, no. 7, pp. 453–466, 2001.
- [17] E. Brogi, "Benign and malignant spindle cell lesions of the breast," *Seminars in Diagnostic Pathology*, vol. 21, no. 1, pp. 57–64, 2004.
- [18] R. K. Jacklin, P. F. Ridgway, P. Ziprin, V. Healy, D. Hadjiminas, and A. Darzi, "Optimising preoperative diagnosis in phyllodes tumour of the breast," *Journal of Clinical Pathology*, vol. 59, no. 5, pp. 454–459, 2006.
- [19] B. K. McLaren, J. Smith, P. A. Schuyler, W. D. Dupont, and D. L. Page, "Adenomyoepithelioma: clinical, histologic, and immunohistologic evaluation of a series of related lesions," *American Journal of Surgical Pathology*, vol. 29, no. 10, pp. 1294–1299, 2005.



Hindawi
Submit your manuscripts at
<http://www.hindawi.com>

