



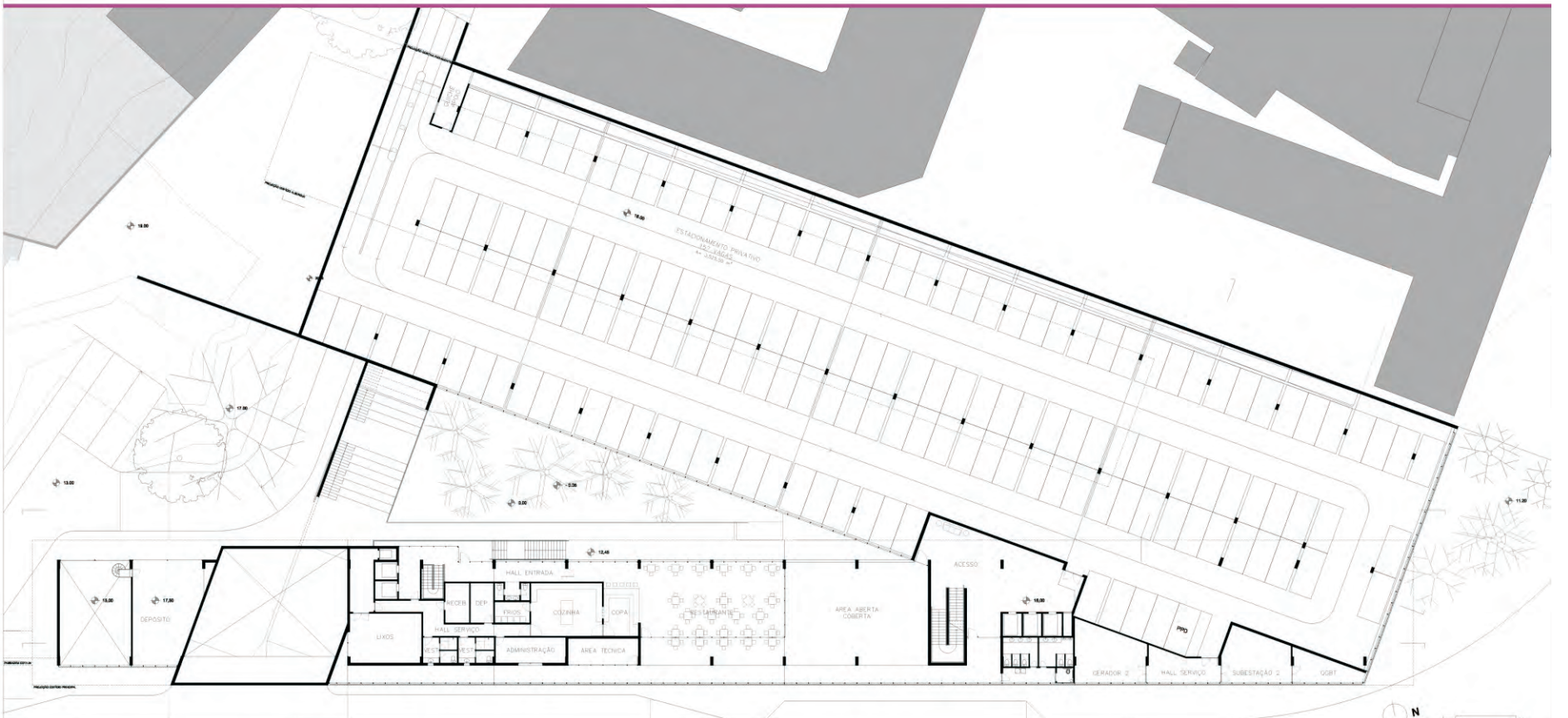
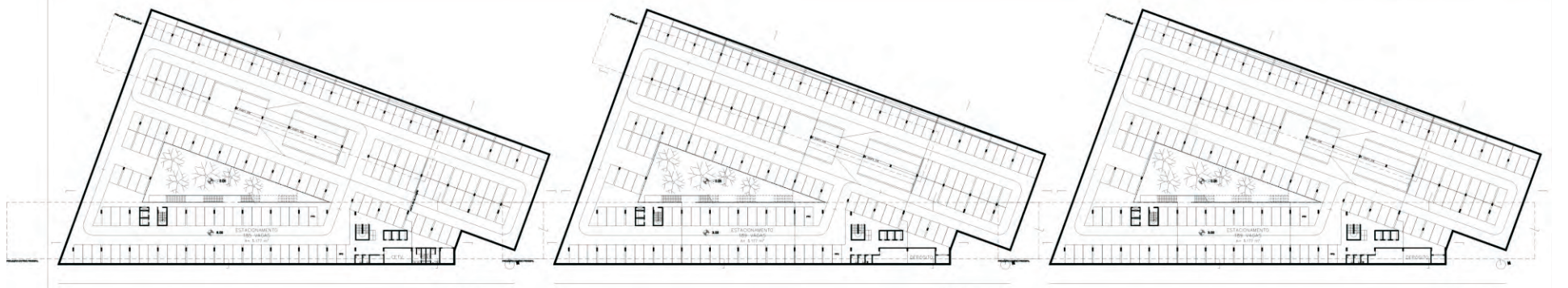






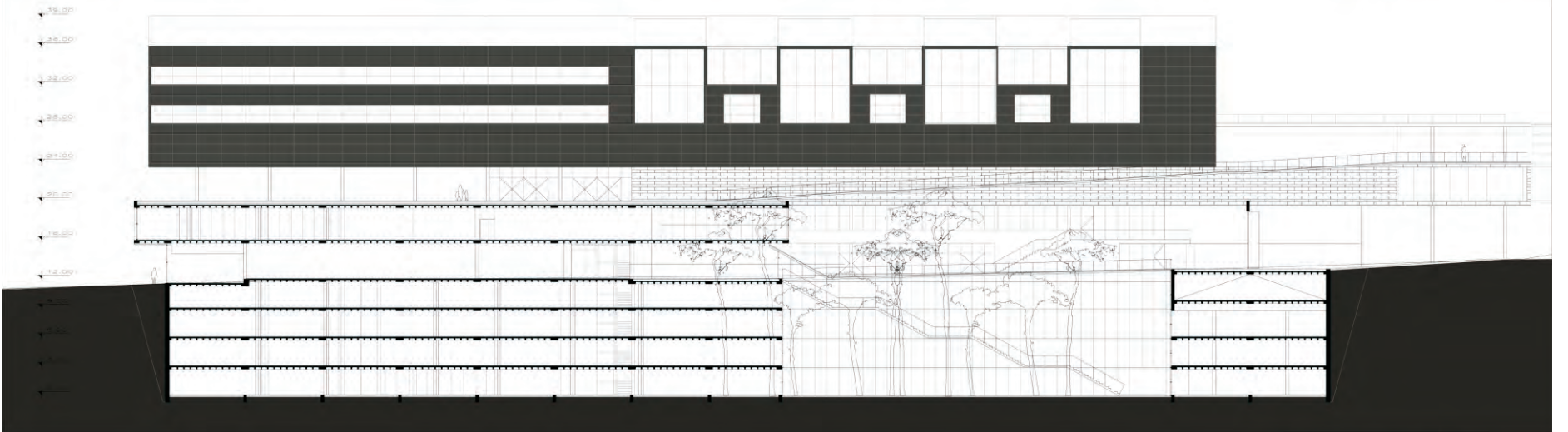


VISTA ESQUINA SARMENTO LEITE x OSVALDO ARANHA



PLANTA BAIXA SEGUNDO PAV. \_ 1:200





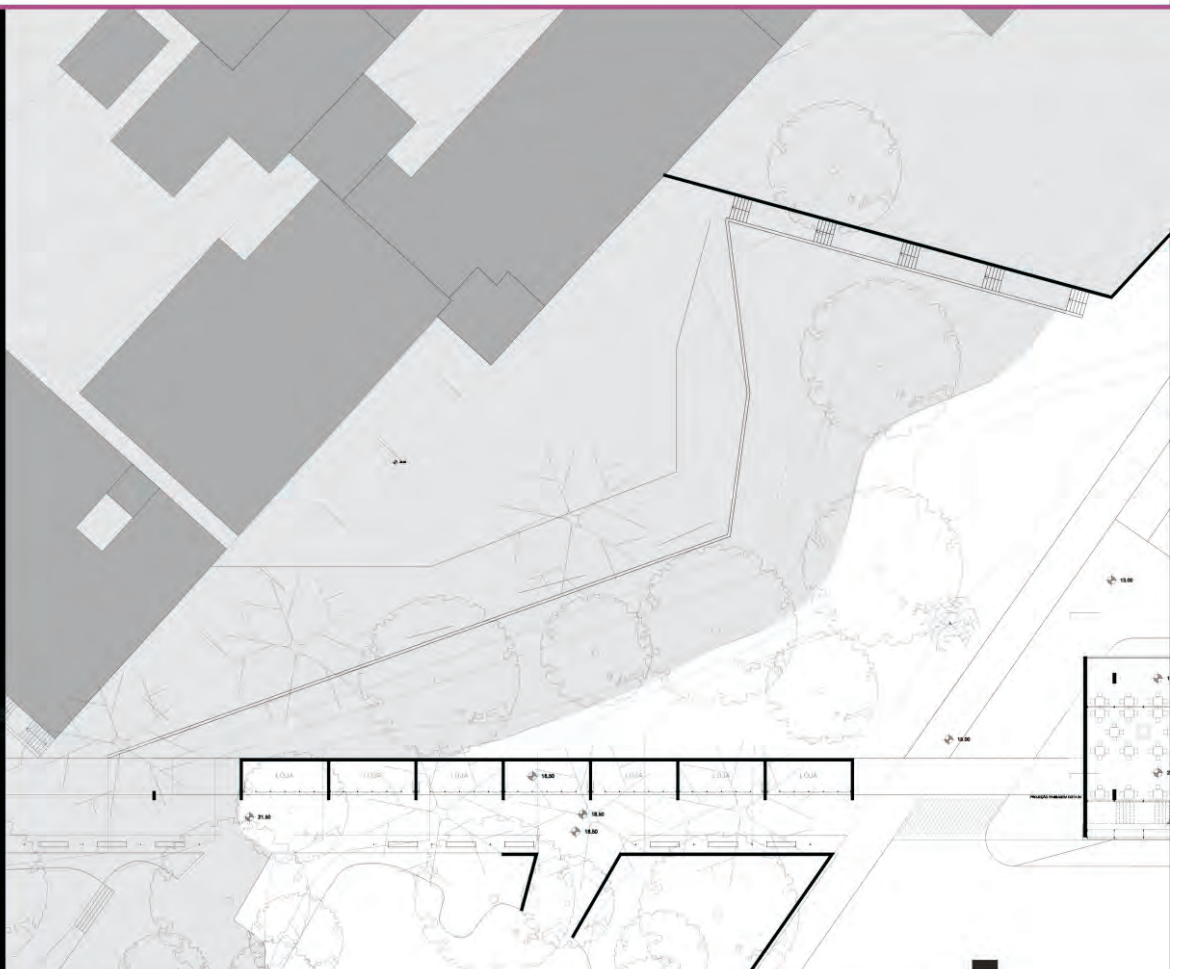
CORTE A / FACHADA NORTE \_ 1:200



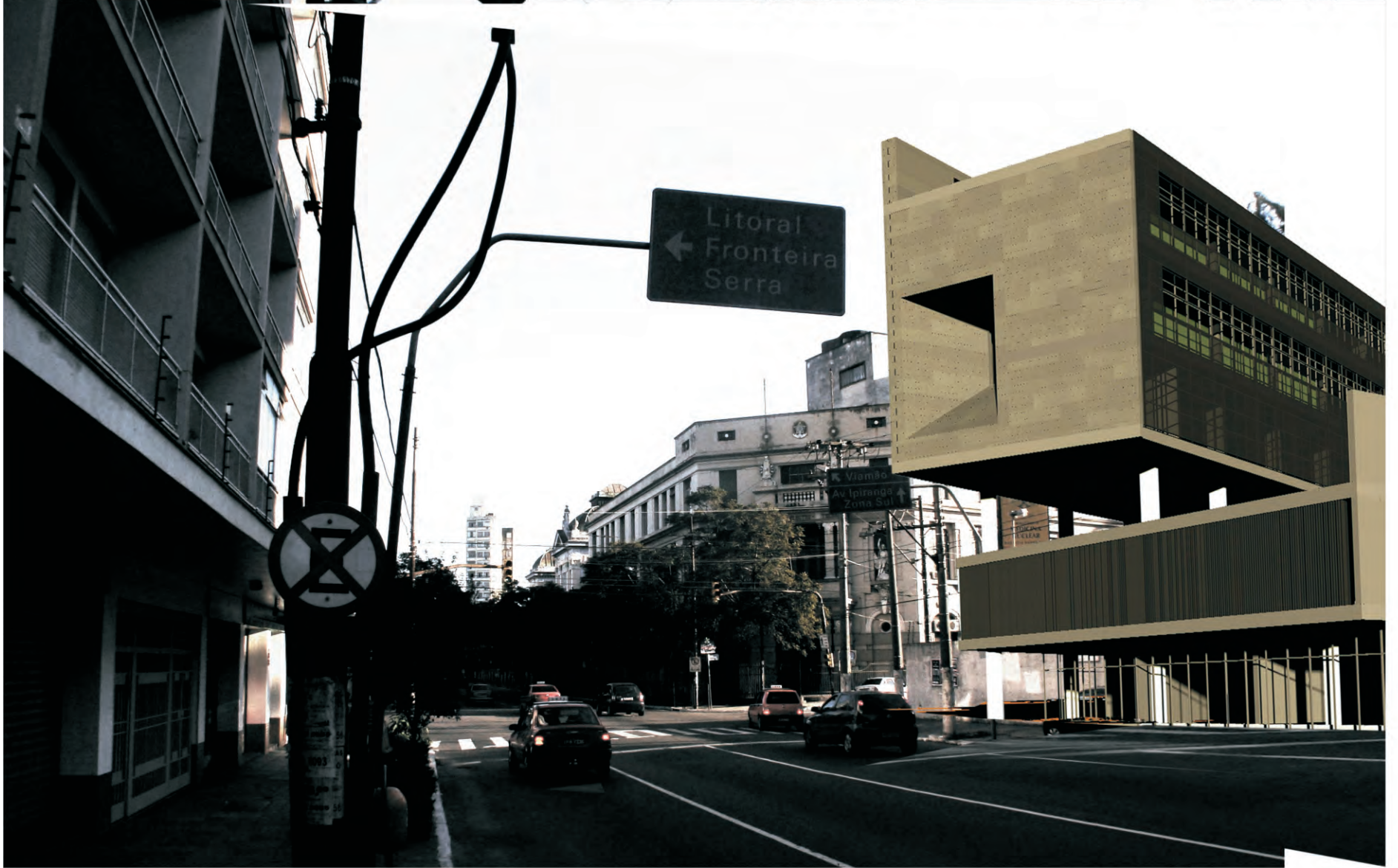
CORTE LONGITUDINAL \_ 1:200



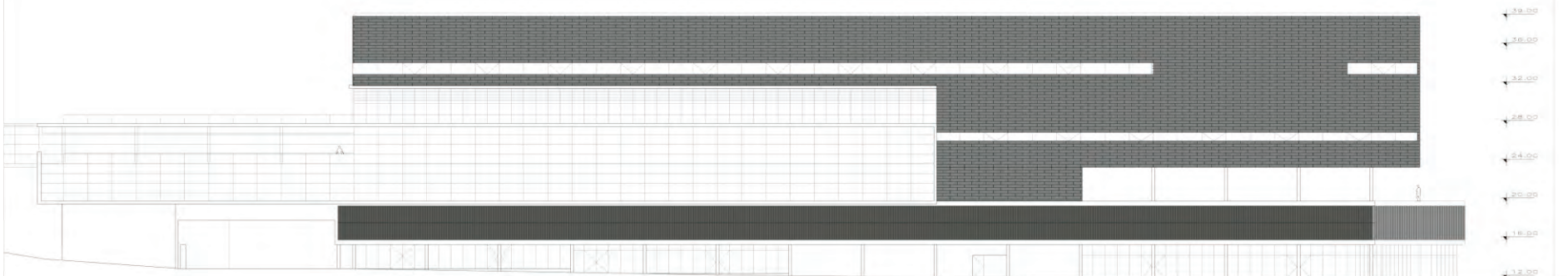
FACHADA LESTE \_ 1:200



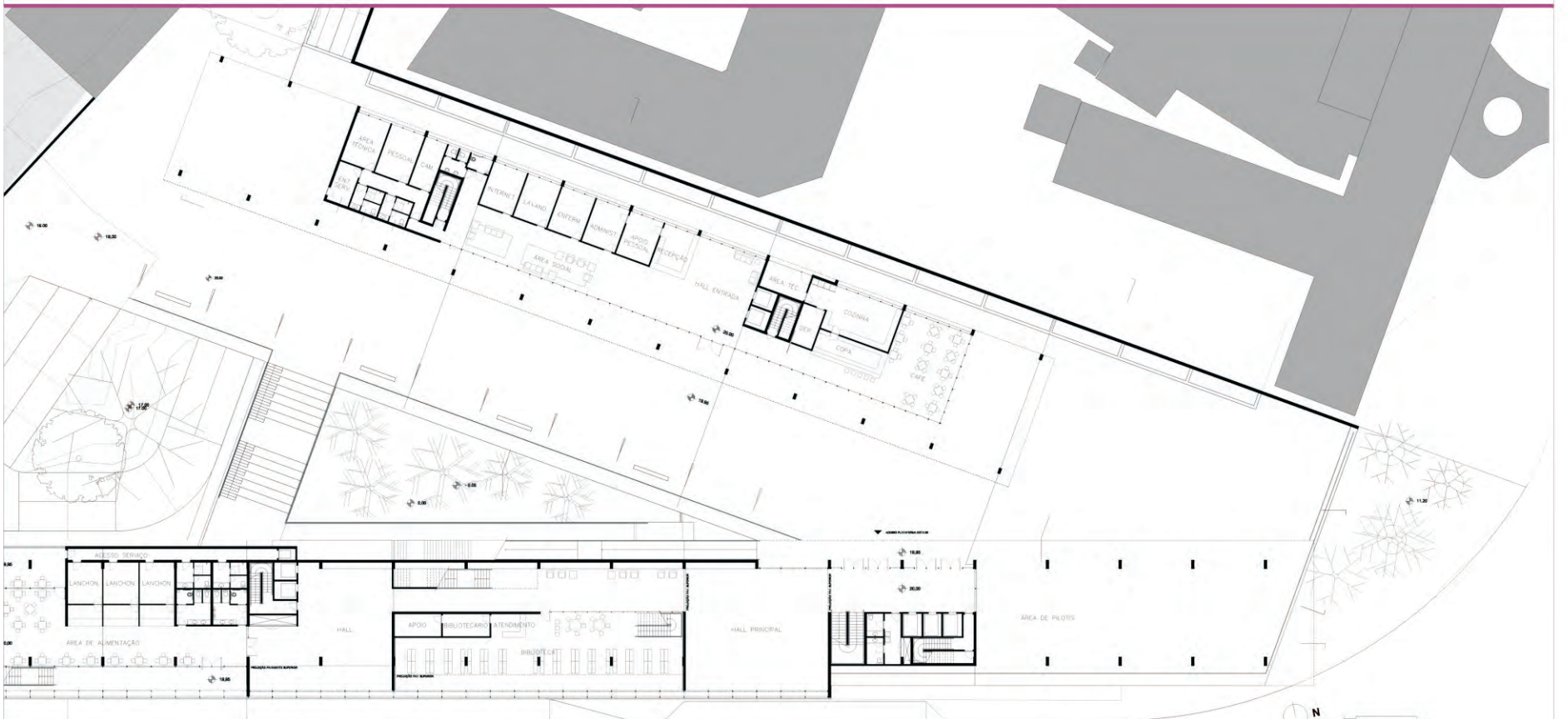




VISTA ESQUINA SARMENTO LEITE x OSVALDO ARANHA



FACHADA SUL \_ 1:200



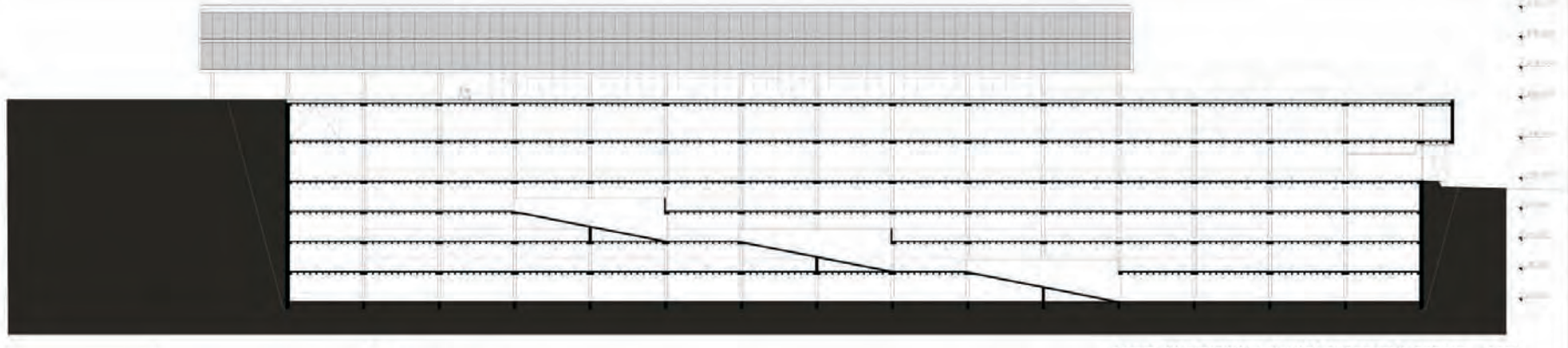
PLANTA BAIXA TERCEIRO PAV. \_ 1:200



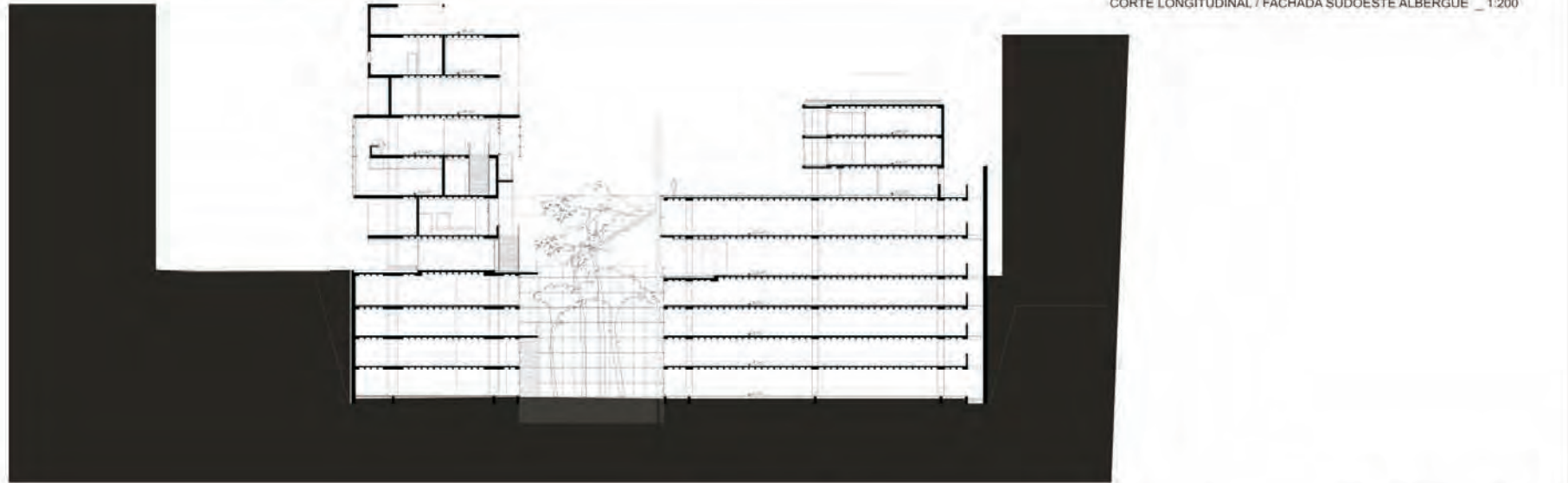
PERCEPÇÕES URBANAS.  
 UM QUARTERÃO FECHADO, IMPERMEÁVEL, CHEIO DE MUROS, CERCAS, VANS E PESSOAS CARENTES POR TODAS AS PARTES.



FACHADA NORDESTE - ALBERGUE \_ 1:200



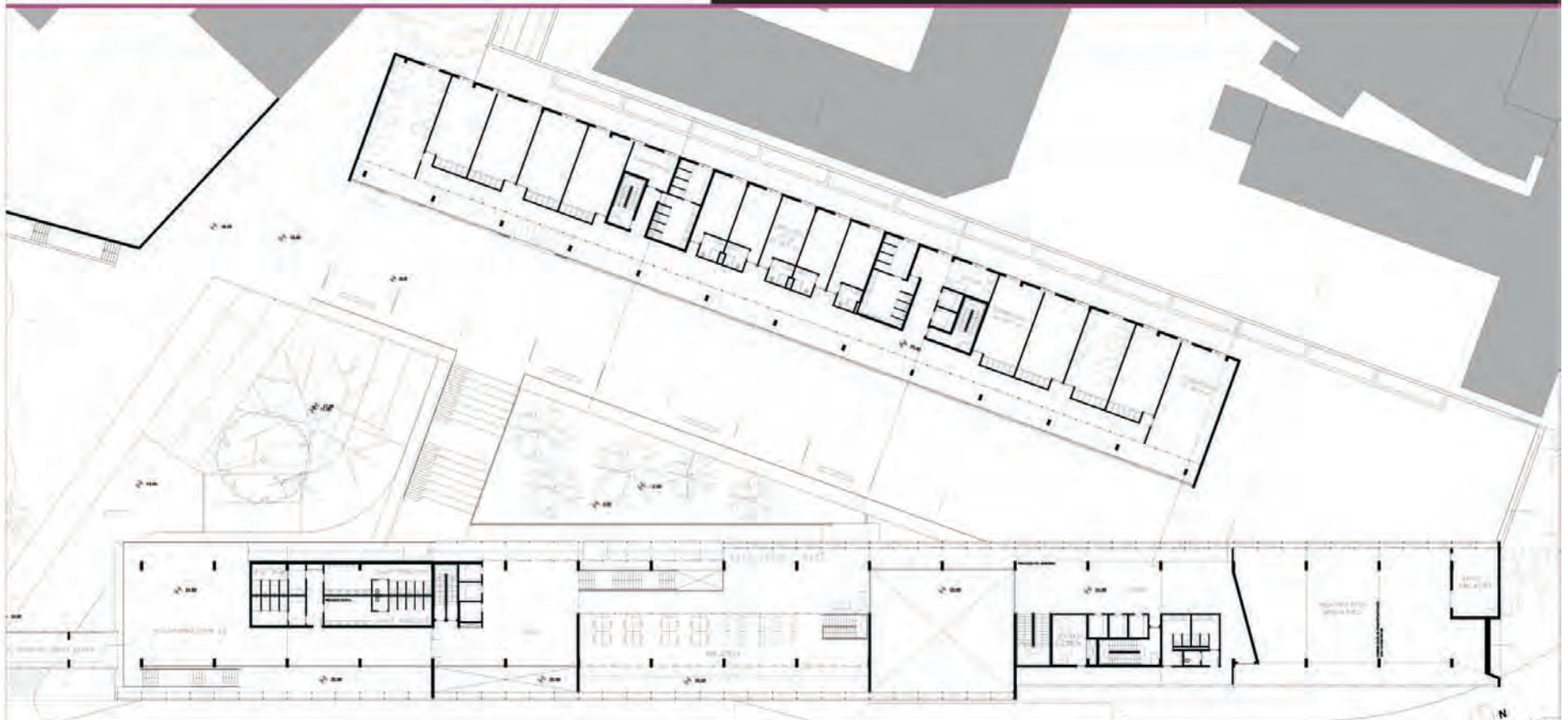
CORTE LONGITUDINAL / FACHADA SUDOESTE ALBERGUE \_ 1:200



CORTE TRANSVERSAL \_ 1:200

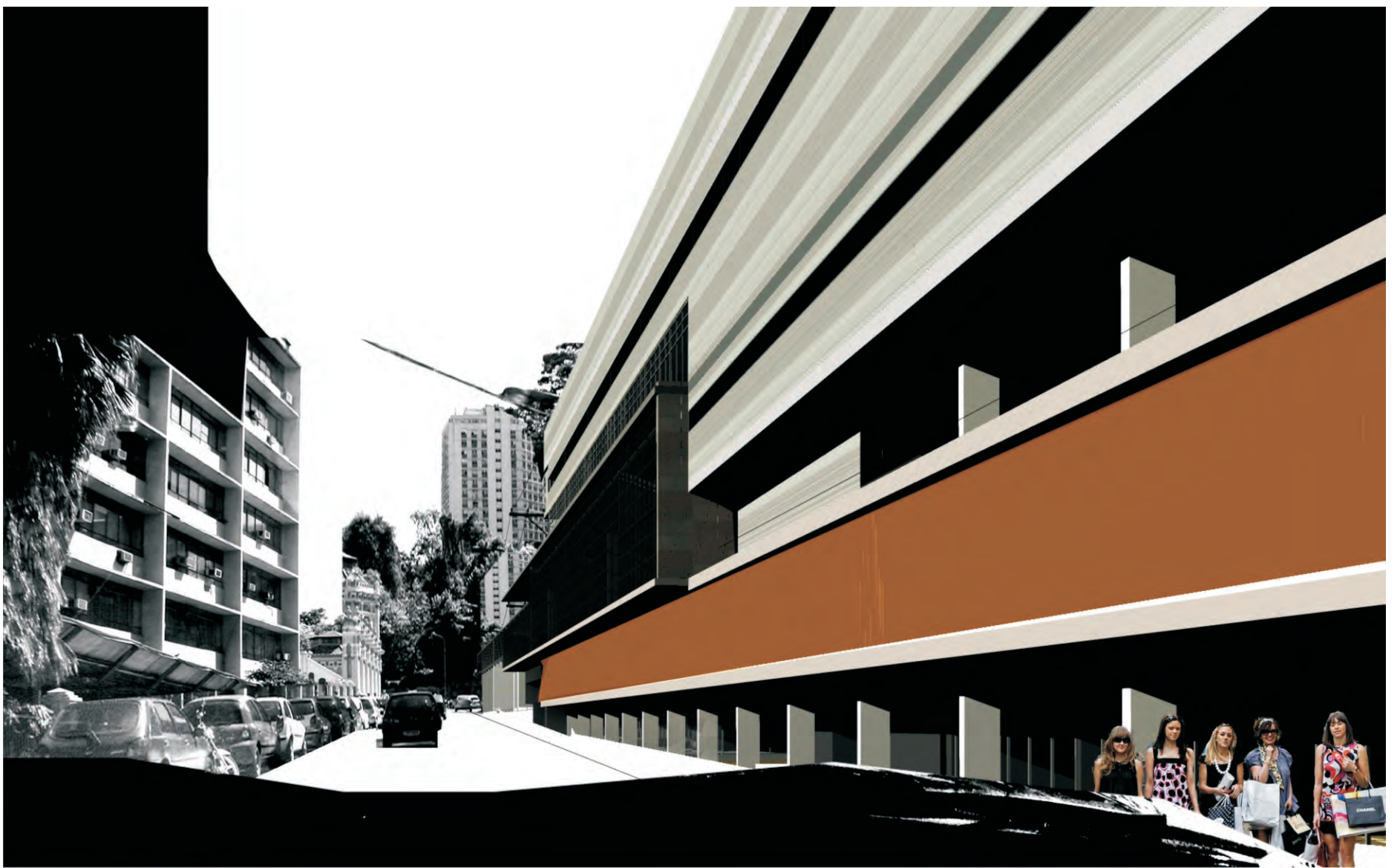


PLANTA COBERTURA \_ 1:500

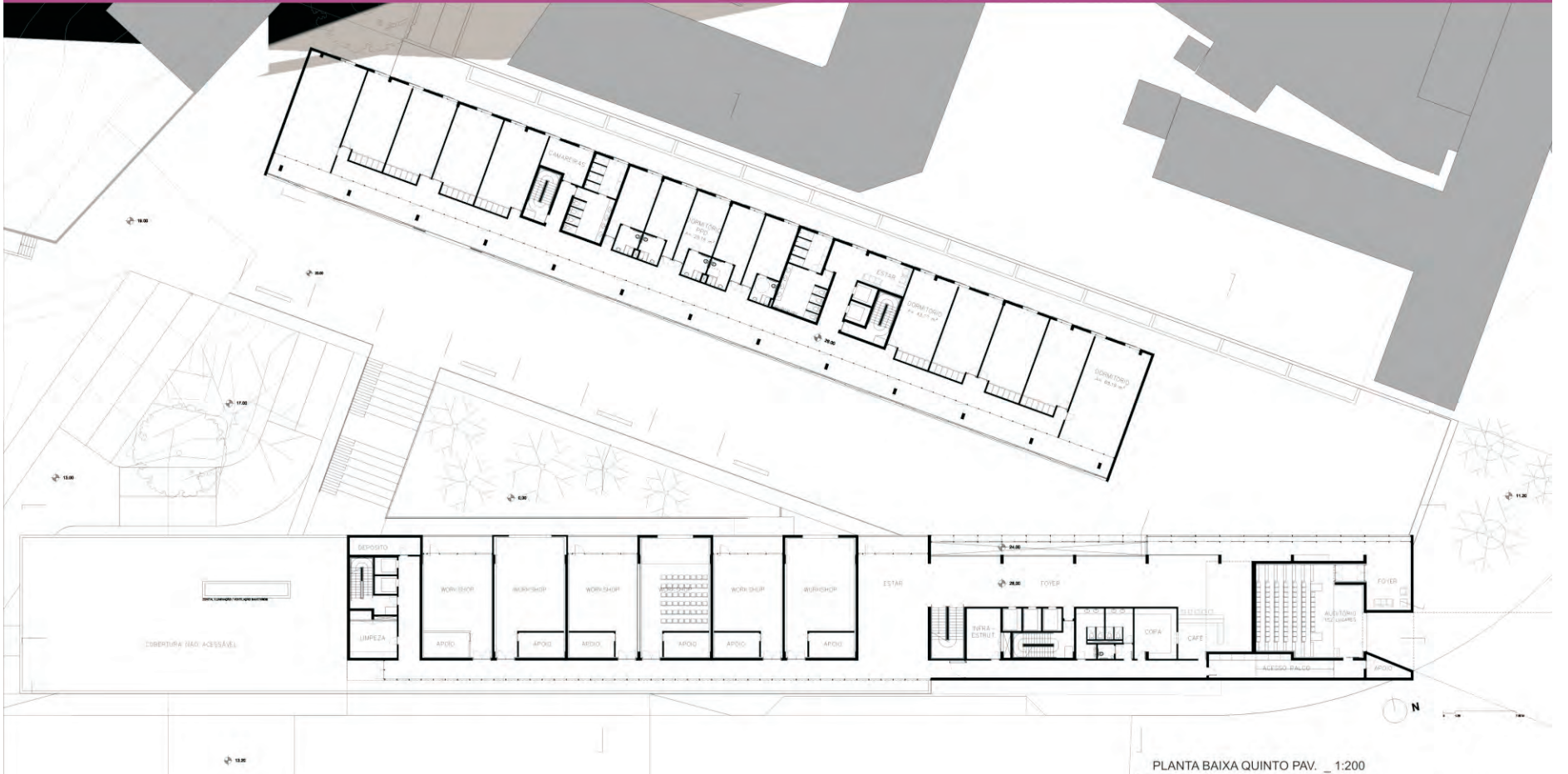


PLANTA BAIXA QUARTO PAV. \_ 1:200



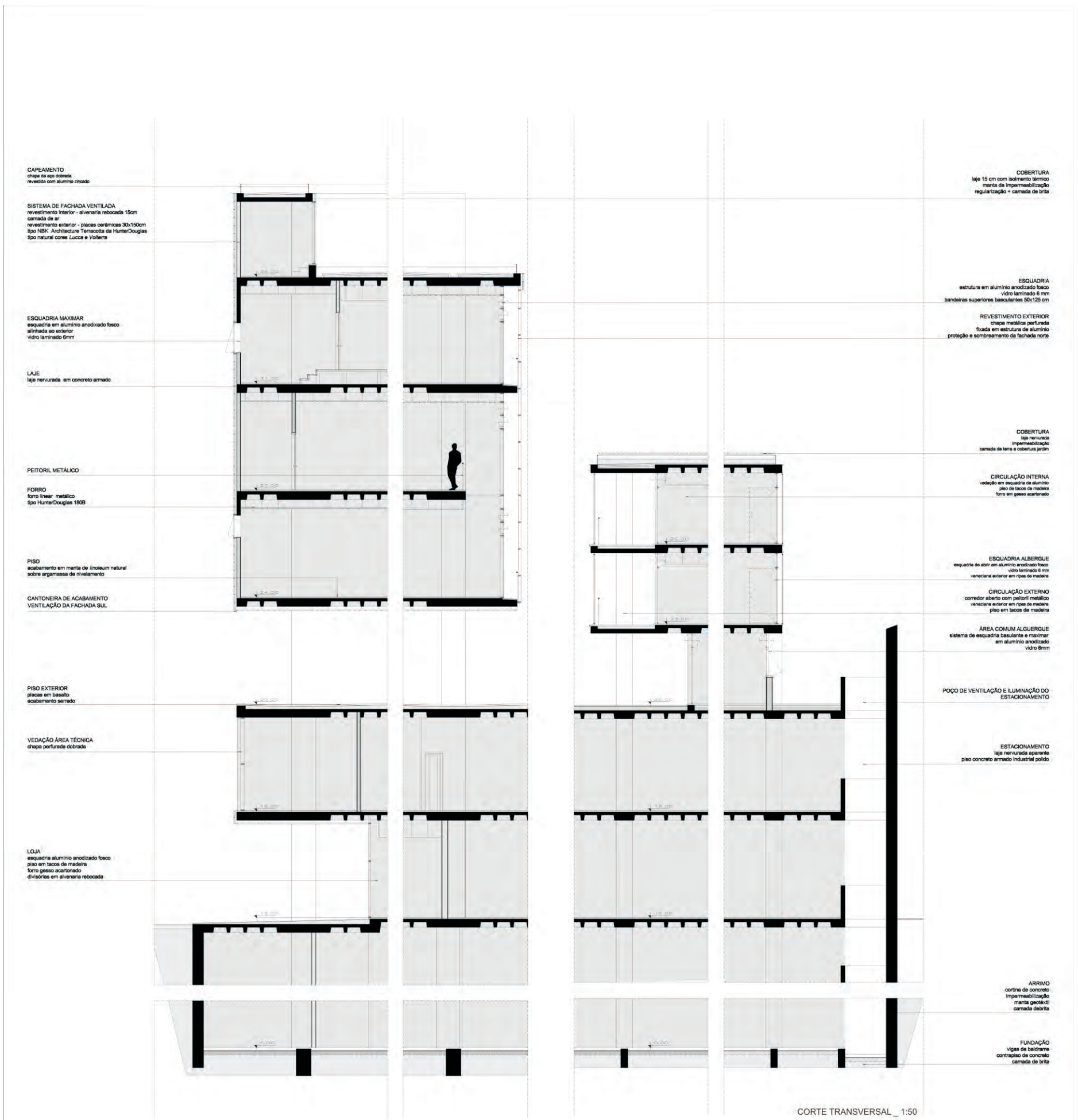


VISTA PLATAFORMA \_ COTA 20



PLANTA BAIXA QUINTO PAV. \_ 1:200





CORTE TRANSVERSAL\_ 1:50

