

UNIVERSIDADE FEDERAL DO RIO GRANDE DO SUL  
FACULDADE DE AGRONOMIA  
PROGRAMA DE PÓS-GRADUAÇÃO EM ZOOTECNIA

**IMPLICAÇÕES DO USO DE MARCADORES MOLECULARES PARA O  
TRANSPLANTE DE CÉLULAS GERMINATIVAS EM PEIXES**

ANA CARINA NOGUEIRA VASCONCELOS

Bióloga - UFLA  
Mestre em Medicina Veterinária - UFLA

Tese apresentada ao Programa de Pós-Graduação em Zootecnia como um dos  
requisitos para a obtenção do título de Doutora em Zootecnia  
Área de Concentração: Produção Animal

Porto Alegre (RS), Brasil  
Março de 2018

## CIP - Catalogação na Publicação

Vasconcelos, Ana Carina Nogueira  
IMPLICAÇÕES DO USO DE MARCADORES MOLECULARES PARA  
O TRANSPLANTE DE CÉLULAS GERMINATIVAS EM PEIXES /  
Ana Carina Nogueira Vasconcelos. -- 2018.

108 f.

Orientador: Danilo Pedro Streit Jr.

Coorientador: Goro Yoshizaki.

Tese (Doutorado) -- Universidade Federal do Rio  
Grande do Sul, Faculdade de Agronomia, Programa de  
Pós-Graduação em Zootecnia, Porto Alegre, BR-RS, 2018.

1. Expressão gênica. 2. Marcador molecular. 3.  
Células germinativas. 4. Splicing alternativo. 5.  
Peixes teleósteos. I. Streit Jr, Danilo Pedro,  
orient. II. Yoshizaki, Goro, coorient. III. Título.

Ana Carina Nogueira Vasconcelos  
Mestre em Reprodução animal

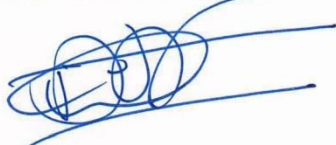
**TESE**

Submetida como parte dos requisitos  
para obtenção do Grau de

**DOUTORA EM ZOOTECNIA**

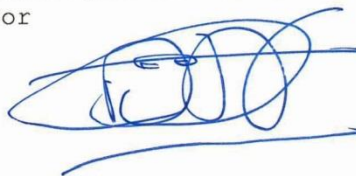
Programa de Pós-Graduação em Zootecnia  
Faculdade de Agronomia  
Universidade Federal do Rio Grande do Sul  
Porto Alegre (RS), Brasil

Aprovada em: 22.03.2018  
Pela Banca Examinadora



DANILO PEDRO STREIT JR.  
PPG Zootecnia/UFRGS  
Orientador

Homologado em: 02/05/2018  
Por



DANILO PEDRO STREIT JR.  
Coordenador do Programa de  
Pós-Graduação em Zootecnia



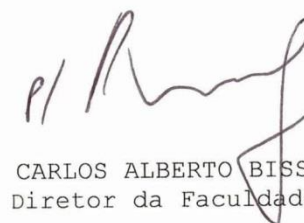
Leonardo José Gil Barcellos  
UPF



Diógenes Henrique de Siqueira-Silva  
UNIFESSPA



Leandro Cesar de Godoy  
UFRGS



CARLOS ALBERTO BISSANI  
Diretor da Faculdade de Agronomia

## **Agradecimento**

Eu gostaria muito de agradecer a todos que contribuíram de alguma forma para a execução deste trabalho, em especial:

Ao professor Dr. Danilo Streit Jr. por ter confiado em mim desde que nós começamos a trabalhar juntos. Sem dúvidas, a realização desta tese é também devido à sua ajuda e confiança. Muito obrigada por acreditar nos meus projetos e na minha habilidade em trabalhar com algo mais inovador e ambicioso.

I would like to thank my supervisor in Japan, Professor Dr. Goro Yoshizaki, for receiving me in his lab, and giving all the support and supervision for this thesis. I will be grateful for the opportunity to have learned so much from you. I will never forget your ability to teach me and enormous knowledge in all areas that I did not know enough. It was a great pleasure for me to work daily with a person who has such a good and friendly heart. Your passion for research and relentless desire to learn more and more showed me that it is possible to work really hard and still leave the lab with a smile on my face and the desire to wake up the next day to continue doing science. I will always have a great admiration for you. You are the living embodiment of simplicity and humility. Arigato gozaimashita, sensei!

I would like to thank Anna-san for all the knowledge she has given me and for all the patience in teaching me. Thank you for helping me practice all the theoretical knowledge I had during my academic life. Thank you so much for the great times we spent together, for trust and friendship.

I would like to thank all the colleagues from the lab in Tokyo! You are really special for me! Sanada-san, Jiro-san, Ishida-san, Matsushita-san, Li-san, Miwa-san and Pum-san, thank you so much for all your help, kindness and the nice moments we shared together! I would also like to thank all the colleagues from Oizumi lab for their help and happiness! A special thanks to Miura-san, for all the help offered at all times. Thank you very much for the professionalism and kindness!

Eu gostaria de agradecer aos professores Leonardo Barcellos, Leandro Godoy e Diógenes Siqueira pela disponibilidade em fazer parte deste importante momento na minha vida profissional e acadêmica. Muito obrigada pela excelente contribuição para a minha tese.

À Universidade Federal do Rio Grande do Sul e ao Programa de Pós-Graduação em Zootecnia pela oportunidade a que me foi atribuída.

Aos programas de fomento de pesquisa científica, CAPES, CNPq e Japan Society for the Promotion of Science (JSPS), pelo apoio financeiro dado à minha formação.

Muito obrigada!

## IMPLICAÇÕES DO USO DE MARCADORES MOLECULARES PARA O TRANSPLANTE DE CÉLULAS GERMINATIVAS EM PEIXES <sup>1</sup>

Autora: Ana Carina Nogueira Vasconcelos

Orientador: Dr. Danilo P. Streit Jr.

**Resumo:** O transplante de células germinativas tem sido uma importante abordagem experimental para o estudo da preservação genética de espécies ameaçadas de extinção ou economicamente importantes. A técnica consiste na remoção das células germinativas indiferenciadas das gônadas do animal doador e na transferência das mesmas para a gônada de um indivíduo receptor. A fim de aumentar a eficiência da técnica, a identificação prévia das células germinativas a serem transplantadas torna-se preferível, visto que a cavidade que as receberá apresenta tamanho limitado. Sendo assim, é importante o desenvolvimento de marcadores moleculares que identifiquem precisamente as células a serem transplantadas na cavidade do indivíduo receptor, e os genes mais utilizados para esta finalidade são o *dead end* e o gene *vasa*, os quais são expressos apenas nas células da linhagem germinativa. Devido à importância do *Colossoma macropomum* (tambaqui) para a economia brasileira, esta espécie foi escolhida como uma espécie modelo de preservação para este estudo. Através do isolamento e sequenciamento dos genes *dead end* e *vasa*, desenvolvemos sondas de hibridização capazes de reconhecer as células onde estes genes são expressos e estudar o seu padrão de expressão nas gônadas. Ambos os genes apresentaram intensa expressão nos oócitos pré-vitelogênicos e fraca expressão em algumas espermatogônias. Pela primeira vez na literatura, diferentes isoformas causadas por *splicing* alternativo foram identificadas no gene *dead end*. A quantificação da expressão temporal dos diferentes transcritos mostrou que o padrão de expressão da sequência completa do gene teve uma tendência distintiva comparada ao padrão dos transcritos curtos, sugerindo que as diferentes isoformas desempenham papéis específicos e importantes para o desenvolvimento da linha germinativa nesta espécie.

**Palavras-chave:** células germinativas, expressão gênica, sequenciamento genético, tambaqui.

---

<sup>1</sup> Tese de Doutorado em Zootecnia - Produção Animal, Faculdade de Agronomia, Universidade Federal do Rio Grande do Sul, Porto Alegre, RS, Brasil. (108 p.) Março, 2018.

## IMPLICATIONS OF THE USE OF MOLECULAR MARKERS FOR THE GERM CELLS TRANSPLANTATION IN FISH<sup>2</sup>

Author: Ana Carina Nogueira Vasconcelos

Supervisor: Dr. Danilo Pedro Streit Jr.

**Abstract:** Germ cell transplantation has been an important experimental approach to the study of the genetic preservation of endangered or economically important species. The technique consists in removing undifferentiated germ cells from the donor animal's gonads and transferring them to the gonad of a recipient individual. In order to increase the efficiency of the technique, the prior identification of the germ cells to be transplanted becomes preferable, since the receiving cavity presents limited size. Therefore, it is important to develop molecular markers to precisely identify the cells to be implanted in the recipient cavity, and the genes most used for this purpose are the *dead end* and the *vasa* genes, which are expressed only in germline cells. Due to the importance of *Colossoma macropomum* (tambaqui) for the Brazilian economy, this species was chosen as a model species for preservation in this study. By isolating and sequencing the *dead end* and *vasa* genes, we developed hybridization probes capable of recognizing the cells where these genes are expressed and better studying their expression pattern in the gonads. Both genes presented intense expression in pre-vitellogenic oocytes and poor expression in some spermatogonia. For the first time in the literature, different isoforms caused by alternative splicing were identified in the *dead end* gene. Quantification of the temporal expression of the different transcripts showed that the expression pattern of the full-length sequence had a distinctive tendency compared to the short transcripts pattern, suggesting that the different isoforms play specific roles for the germline development in this species.

**Keywords:** gene expression, genetic sequencing, germ cells, tambaqui.

---

<sup>2</sup> Doctoral thesis in Animal Science, Faculdade de Agronomia, Universidade Federal do Rio Grande do Sul, Porto Alegre, RS, Brazil. (108 p.) March, 2018.

## Sumário

<b>CAPÍTULO I.....</b>	<b>12</b>
1. Introdução.....	13
2. Revisão bibliográfica .....	15
2.1. Peixes teleósteos .....	15
2.2. Influência dos impactos ambientais.....	17
2.3. Transplante de células germinativas.....	18
2.3.1. Perspectivas do transplante de espermatogônias.....	19
2.4. Gametogênese nos animais.....	19
2.4.1. Espermatogênese .....	19
2.4.2. Espermatogênese nos peixes teleósteos .....	20
2.4.3. Oogênese.....	21
2.4.4. Oogênese nos peixes teleósteos.....	22
2.5. Gene <i>dead end</i> .....	23
2.6. Gene <i>vasa</i> .....	23
2.7. Tambaqui ( <i>Colossoma macropomum</i> ).....	24
3. Hipóteses e objetivos .....	27
<b>CAPÍTULO II.....</b>	<b>28</b>
Cloning, characterization and expression of <i>vasa</i> gene in teleost fish <i>Colossoma macropomum</i> .....	29
Abstract.....	30
1. Introduction .....	31
2. Materials and methods .....	32
3. Results .....	34
4. Discussion .....	39
References .....	41
<b>CAPÍTULO III.....</b>	<b>50</b>
First evidence of alternative splicing of <i>dead end</i> gene in fish.....	51
Abstract.....	51
Introduction.....	52
Results .....	53
Discussion .....	61
Methods.....	64
References .....	67
4. Considerações finais .....	74
5. Referências.....	75
<b>APÊNDICES .....</b>	<b>90</b>

<b>Apêndice 1: Normas utilizadas para a preparação do Capítulo II.....</b>	<b>91</b>
Guide for Authors: Gene .....	91
<b>Apêndice 2: Normas utilizadas para a preparação do Capítulo III.....</b>	<b>101</b>
Guide for Authors: Scientific Reports .....	101
<b>6. Vita .....</b>	<b>108</b>



## Lista de Tabelas

	Página
<b>Capítulo II</b>	
Table 1. The identities of <i>tvasa</i> to other <i>vasa</i> homologs.....	35
<b>Capítulo III</b>	
Table 1. The identities of tDnd to other <i>dead end</i> proteins....	54
Table 2. Description of the primers used.....	65

## Lista de Figuras

	Página
<b>Capítulo I</b>	
Figura 1.	Dendograma relativo entre os peixes teleósteos e os demais grupos de vertebrados..... 15
Figura 2.	Cladograma mostrando as relações internas dentro da infraclasse Teleostei..... 16
Figura 3.	Representação das fases da espermatogênese..... 20
Figura 4.	Desenho esquemático da espermatogênese dos peixes..... 21
Figura 5.	Oogênese..... 22
Figura 6.	Descrição esquemática dos estádios de desenvolvimento dos oócitos em peixes teleósteos..... 23
Figura 7.	Tambaqui ( <i>Colossoma macropomum</i> )..... 24
Figura 8.	Ocorrência do <i>Colossoma macropomum</i> na América do Sul..... 25
Figura 9.	Fatores que influenciam direta ou indiretamente na redução da variabilidade genética do tambaqui..... 26
<b>Capítulo II</b>	
Figure 1.	Multialignment of the tVasa sequence with the other Vasa proteins..... 36
Figure 2.	Phylogenetic tree of DEAD-box proteins..... 37
Figure 3.	N-terminal region of tVasa amino acid sequence..... 38
Figure 4.	Expression of <i>tvasa</i> in the tissues. $\beta$ -actin served as a loading control..... 38
Figure 5.	<i>In situ</i> hybridization (ISH) analysis of <i>vasa</i> mRNA expression in gonad sections of <i>Colossoma macropomum</i> ..... 39
<b>Capítulo III</b>	
Figure 1.	Multialignment of selected <i>dnd</i> homologs..... 55
Figure 2.	UPGMA tree for the dead end and its related protein, a1cf family..... 56
Figure 3.	Schematic drawing of exon-intron structure of various vertebrates..... 57
Figure 4.	Different transcripts of the <i>dead end</i> gene..... 58
Figure 5.	(a) Schematic drawing of the position and length of each specific primer. (b) Expression of <i>dnd</i> transcripts in various tissues of tambaqui..... 59
Figure 6.	Relative normalized expression of the <i>dead end</i> gene transcripts at different ages of tambaqui..... 60
Figure 7.	<i>In situ</i> hybridization (ISH) analysis of <i>dead end</i> type 1 in gonad sections of <i>Colossoma macropomum</i> ..... 61

## Lista de abreviaturas e símbolos

bp: Base pair

cDNA: Complementary DNA

DNA: Deoxyribonucleic acid

*dnd*: *dead end*

DSRM: Double-stranded RNA binding motif

Fw: Forward

ISH: *In situ* hybridization

miRNA: Micro ribonucleic acid

mRNA: Messenger ribonucleic acid

RACE: Rapid Amplification of cDNA Ends

RNA: Ribonucleic acid

RRM: RNA recognition motif

RT-PCR: Reverse Transcription–Polymerase Chain Reaction

Rv: Reverse

## **CAPÍTULO I**

## 1. Introdução

Popularmente conhecida como tambaqui, a espécie amazônica *Colossoma macropomum* é uma das mais utilizadas em piscicultura no Brasil devido à facilidade na produção de alevinos e ao rápido crescimento (Marcuschi et al., 2010). O tambaqui é um peixe de grande porte e sua produção tem apresentado um crescimento exponencial nos últimos anos (Batista & Petreire Jr., 2003; Sánchez-Botero & Garcez, 2006; Sousa et al., 2008).

Apesar das populações ainda apresentarem adequada variabilidade genética na natureza (Fazzi-Gomes et al., 2017), a fragmentação e/ou destruição do habitat natural (Araújo-Lima & Ruffino, 2004; Sánchez-Botero & Garcez, 2006), juntamente com as alterações climáticas e sobrepesca (Sánchez-Botero & Garcez, 2006; Sousa et al., 2008), podem provocar o desaparecimento de indivíduos menos adaptados, diminuindo assim, o tamanho populacional da espécie.

Para possibilitar a diversidade genética equivalente ao das populações naturais, a produção de indivíduos jovens em cativeiro deve ser efetuada utilizando uma quantidade significativa de reprodutores. Entretanto, algumas variáveis impedem o uso de um elevado número de indivíduos, como a assincronia no tempo de desova e os custos para a manutenção dos animais.

Há alguns anos, uma técnica de transplante interespecífico de células germinativas do tipo A vem sendo estudada com o propósito de solucionar problemas de baixa variabilidade genética de algumas espécies em cativeiro e dificuldade de manutenção das matrizes (Takeuchi et al., 2004; Farlora et al., 2014; Sato et al., 2014). Esta técnica permite que as espermatogônias do doador colonizem a cavidade celomática do receptor e se diferenciem em ovos ou espermatozoides (Okutsu et al., 2006a; Okutsu et al., 2007; Takeuchi et al., 2009; Yazawa et al., 2010). E caso as células de mais de um doador sejam misturadas, um único indivíduo receptor produzirá gametas de animais diferentes (Sato et al., 2014), aumentando assim, a variabilidade genética dentro da população.

O sucesso obtido nas espécies yellowtail (Morita et al., 2012), tilápia (Farlora et al., 2014), pufferfish (Hamasaki et al., 2017), zebrafish (Li et al., 2017), medaka (Seki et al., 2017) e roncadeira-japonesa (Yoshikawa et al., 2017) viabiliza a aplicação desta biotecnologia como uma ferramenta de preservação de espécies ameaçadas de extinção e aumento da variabilidade genética em populações de interesse ambiental ou econômico.

Para identificar as células germinativas após a dissociação do tecido gonadal e analisar o comportamento das mesmas, o uso de marcadores moleculares é aconselhável. Como os genes *dead end* (Weidinger et al., 2003) e *vasa* (Raz, 2000) são especificamente expressos nas células da linhagem germinativa, o estudo de ambos tornou-se uma ferramenta importante para a identificação das células que serão transplantadas.

Com o objetivo geral de fornecer subsídios para a preservação de espécies de peixes econômica e ecologicamente importantes no Brasil, nesta tese serão abordados os principais fatores que colocam em risco as espécies brasileiras e o estudo dos genes *dead end* (*dnd*) e *vasa* da espécie *Colossoma*

*macropomum*. Para identificar as células germinativas desta espécie, isolamos e caracterizamos os genes *dnd* e *vasa* do tambaqui e avaliamos o potencial dos mesmos para serem utilizados como marcadores moleculares.

No primeiro capítulo, é apresentada uma revisão bibliográfica sobre os peixes teleósteos e os riscos de extinção das espécies, gametogênese, transplante de células germinativas e uma descrição sobre a importância dos genes *dead end* e *vasa* em diferentes espécies. No segundo capítulo, são apresentadas as técnicas de isolamento e sequenciamento do gene *vasa*, considerando o mesmo como um bom marcador molecular para os oócitos de tambaqui. O terceiro capítulo contém informações sobre o sequenciamento do gene *dead end* e a descoberta de três transcritos do gene encontrados em machos e fêmeas de tambaqui. Em seguida, serão apresentadas as considerações finais da tese.

## 2. Revisão bibliográfica

### 2.1. Peixes teleósteos

Os Osteichthyes, popularmente conhecidos como peixes ósseos, representam um diversificado grupo que possui esqueleto composto basicamente de tecido ósseo. Esta superclasse é a maior classe de vertebrados existentes, a qual consiste de mais de 61.000 espécies (Nelson et al, 2016). Atualmente é dividida em Sarcopterygii e Actinopterygii, sendo que os peixes teleósteos estão inseridos nesta última (Figura 1).

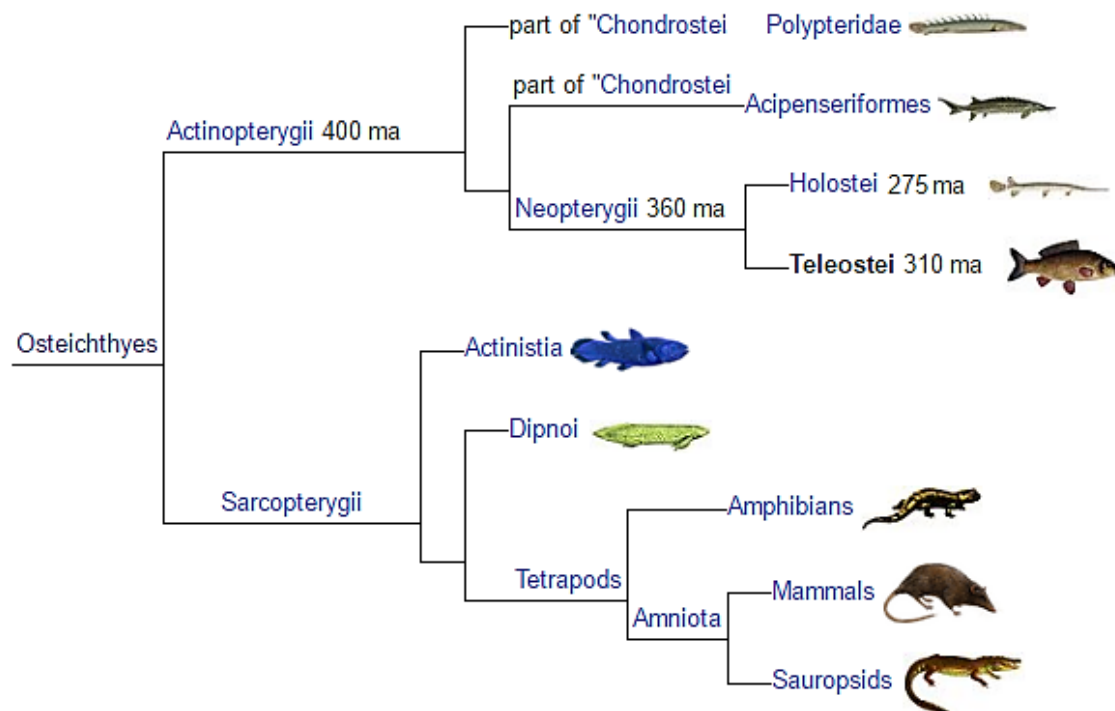


Figura 1. Dendrograma relativo entre os peixes teleósteos e os demais grupos de vertebrados, mostrando também os tetrápodes que evoluíram a partir dos grupos de peixes. Adaptado de Near et al., (2012).

A infraclasse Teleostei surgiu no período Triássico e corresponde a aproximadamente 96% de todos os peixes conhecidos atualmente (Figura 2). Os seus membros formam um grupo monofilético e estão distribuídos em cerca de 63 ordens, 469 famílias e mais de 29.000 espécies, das quais 10% foram descobertas na última década (Nelson et al., 2016).

Apesar dos teleósteos adotarem diferentes estratégias reprodutivas, a maioria apresenta fertilização externa (ovulíparos). Uma parcela desta infraclasse é hermafrodita, começando a vida como fêmea e fazendo a transição para macho em algum momento, e apenas uma pequena porcentagem é vivípara (Helfman et al., 2009).

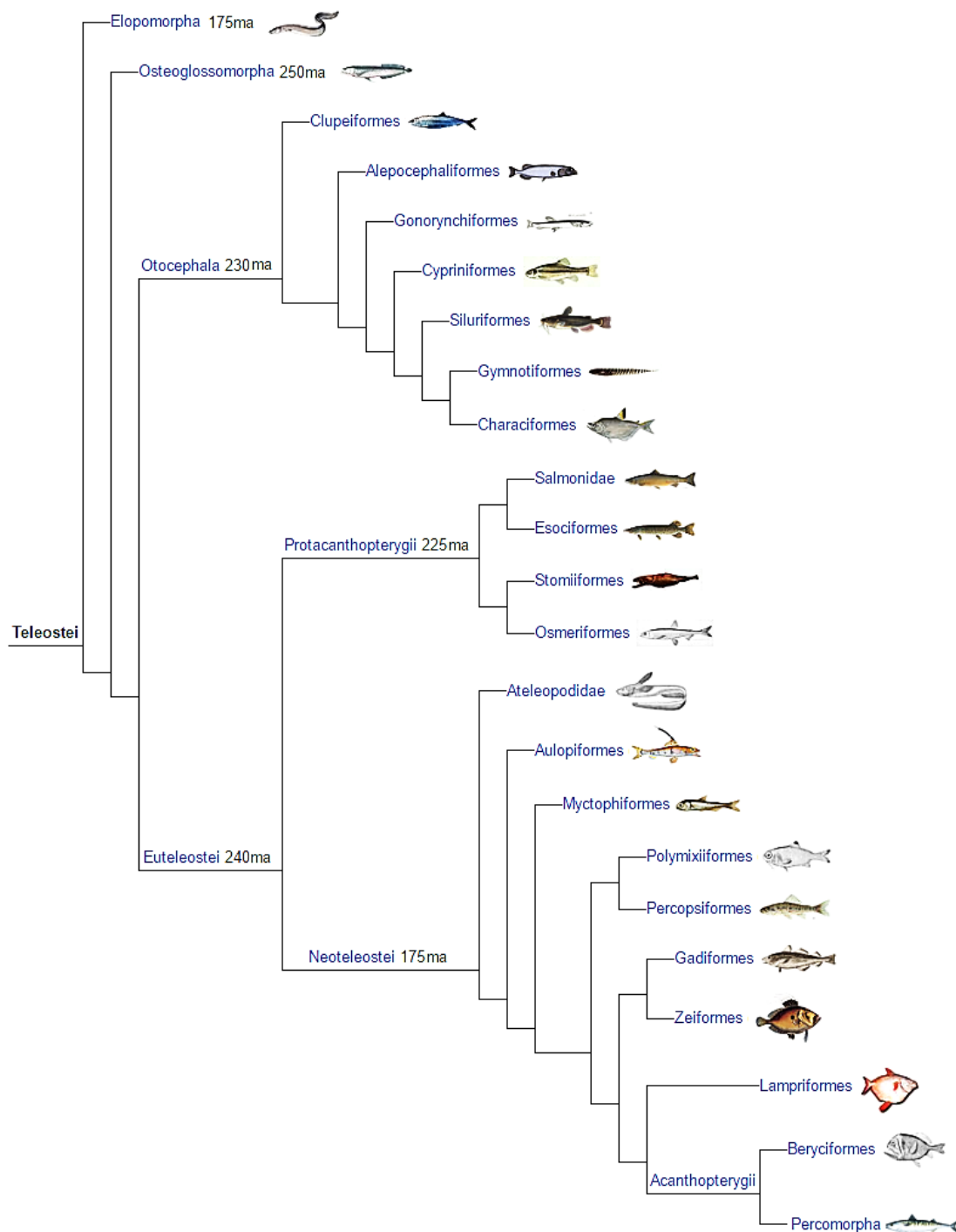


Figura 2. Cladograma mostrando as relações internas dentro da infraclasse Teleostei. Adaptado a partir de Near et al., (2012).

Até o presente momento, os animais exclusivamente dulciaquícolas estão restritos à superordem Osteoglossomorpha, sendo os demais grupos representados por peixes que vivem em ambientes marinhos e de água doce (Nelson, 1994).



Atualmente, o homem interfere decisivamente no processo natural de extinção das espécies através da destruição e/ou alteração de habitats, introdução de espécies exóticas, exploração dos recursos naturais e sobrepesca. De acordo com a Portaria do Ministério do Meio Ambiente nº445/2014, 475 espécies de peixes e invertebrados aquáticos precisam de proteção ambiental e não podem mais ser capturadas, transportadas, manejadas, armazenadas ou comercializadas. O número de animais em perigo de extinção cresce consideravelmente em todo o mundo devido aos desastres naturais, mudanças climáticas e à incapacidade de adaptação a novas condições impostas para sobreviverem.

## **2.2. Influência dos impactos ambientais**

O aumento da temperatura média dos oceanos e da atmosfera da Terra é chamado de aquecimento global e é resultante, principalmente, do acúmulo de gases do efeito estufa. Esta alteração representa uma grande ameaça ao planeta (IPCC, 2014) e estudos comprovam que as mudanças climáticas reduzem a biodiversidade mundial (Ficke et al., 2007; Chown et al., 2010).

A América do Sul é uma das regiões mais vulneráveis às mudanças climáticas devido à degradação florestal e ao enfraquecimento do ciclo hidrológico (Hirota et al., 2011). Desta forma, poderá ter sua temperatura média aumentada drasticamente produzindo efeitos catastróficos em diversas regiões do continente, principalmente na Amazônia e no Nordeste brasileiro (Nobre et al., 2007; Hirota et al., 2010).

Inúmeros cenários criados pelo IPCC sugerem que a temperatura média na Amazônia aumentará mais de 3°C até o ano de 2100, o que reduziria em até 40% a cobertura vegetal de alguns territórios, ameaçando a fauna e a flora da região que possui a maior biodiversidade do planeta (IPCC, 2007; Nobre et al., 2007). O clima mais seco afetará o ambiente aquático e provocará alterações nos ecossistemas e comunidades de organismos (Portner & Farrell, 2008; Gamito et al., 2013).

Estudos em todos os níveis de organização biológica dos peixes revelam que os impactos ambientais afetam a distribuição geográfica (Perry et al., 2005), o comportamento (Abrahams et al., 2007), a fisiologia (Del Toro-Silva et al., 2008), a estrutura esquelética (Booth et al., 2014; Lopes, 2017) e a expressão de genes (Clark et al., 2011).

A sobrepesca é outro fator preocupante em relação ao desaparecimento de espécies. Somada às alterações climáticas (Ficke et al., 2007; Chown et al., 2010), a retirada de indivíduos menores e até mesmo antes da reprodução, diminui o estoque natural e pode reduzir a diversidade genética ao longo do tempo através da deriva genética estocástica (Willi et al., 2006). Com um menor fluxo gênico, a população pode não ser capaz de se adaptar a novas pressões seletivas.

Na natureza, os ecossistemas são organizados de maneira sustentável e todos os organismos são responsáveis por alguma ação preponderante para o seu equilíbrio. Se alguma espécie reduzir consideravelmente o seu tamanho populacional, todo o sistema poderá entrar em desequilíbrio, causando uma reação em cadeia e impactando o meio

ambiente. Desta forma, o estudo de alternativas de preservação genética das espécies torna-se importante para minimizar os impactos negativos causados pela redução da variabilidade genética.

### **2.3. Transplante de células germinativas**

O transplante de células germinativas tem se tornado uma valiosa abordagem experimental para a preservação de espécies ameaçadas de extinção (Orwig & Schlatt, 2005; Lacerda et al., 2006; Higuchi et al., 2011; Yoshizaki et al., 2011; Morita et al., 2012), bem como o estudo da espermatogênese (Dobrinski, 2006; Hill & Dobrinski, 2006), preservação e manipulação da fertilidade (Dobrinski, 2008) e pesquisas na área de produção de animais transgênicos (Nagano et al., 2001; McLean, 2005; Kanatsu-Shinohara et al., 2008; Wong et al., 2011). Esta técnica consiste na remoção das células germinativas da gônada de um indivíduo doador e na transferência das mesmas para a cavidade celomática de larvas recém-eclodidas ou para a gônada de um receptor infértil, fazendo com que estas células se desenvolvam e formem gametas maduros com características genéticas do doador.

A produção de teleósteos quimeras através do transplante celular foi desenvolvida em 1992 (Lin et al., 1992) e em 1994, esta metodologia começou a ser estudada em mamíferos (Brinster & Avarbock, 1994; Brinster & Zimmermann, 1994). Estudos posteriores mostraram um importante avanço científico com o sucesso na produção de gametas gerados a partir do transplante xenogênico (interespecífico) de espermatogônias-tronco de rato para camundongo e de hamster para camundongo (Clouthier et al., 1996; Ogawa et al., 1999). Estudos recentes com transplante singênico (intraespecífico) mostraram resultados satisfatórios em yellowtail (Morita et al., 2012), tilápia (Farlora et al., 2014), truta arco-íris (Takeuchi et al., 2003, 2004, 2009; Lee et al., 2013, 2015, 2016a, 2016b), truta asiática (Lee & Yoshizaki, 2016), medaka (Seki et al., 2017), zebrafish (Li et al., 2017), pufferfish (Hamasaki et al., 2017) e roncadeira-japonesa (Takeuchi et al., 2009; Yoshikawa et al., 2017). Ainda que as células germinativas dos animais doadores sejam capazes de colonizar as gônadas de um animal receptor, a eficiência do transplante depende da competição entre as células transplantadas e as endógenas (Shinohara et al., 2001, 2002). Desta forma, o receptor ideal deve conter células somáticas normais e a gametogênese endógena ausente ou depletada (Brinster et al., 2003), cuja depleção nos peixes pode ser provocada pela droga quimioterápica busulfan (1,4-dimetanosulfonoxibutano) (Lacerda, 2006; Lacerda et al., 2008, 2010; Majhi et al., 2009; Nóbrega et al., 2010), uso de triploides estéreis (Okutsu et al., 2007) e técnicas de knockdown (Yoshizaki et al., 2016).

Em peixes, a realização do transplante utilizando células germinativas criopreservadas (Orwig & Schlatt, 2005; Okutsu et al., 2006b; Lee et al., 2013; Lee et al., 2016) tem mostrado avanços desta técnica e a possibilidade de preservação das linhagens de células germinativas de animais de alto valor zootécnico, espécies em extinção e animais experimentais valiosos. Ampliando ainda mais este cenário, Shikina et al. (2008) demonstraram a capacidade de expansão de espermatogônias do tipo A em

um sistema *in vitro*, antes das mesmas serem transplantadas nos indivíduos receptores.

### **2.3.1. Perspectivas do transplante de espermatogônias**

Particularmente em teleósteos, o uso do transplante singênico ou xenogênico cria um cenário favorável na área de biotecnologia, conservação genética e produção em aquicultura (Lacerda et al., 2006). A técnica possibilita o estudo da biologia da reprodução e dos mecanismos de regulação da gametogênese (Schulz et al., 2010), preservação de espécies ameaçadas de extinção ou economicamente importantes (Okutsu et al., 2006b; Yazawa et al., 2013), conservação do material genético de animais melhorados, viabiliza o aumento da diversidade genética em curto prazo (Lacerda et al., 2006) e análise *in vivo* do comportamento e interação das células que participam ativamente da gametogênese (Takeuchi et al., 2003). A maior importância desta técnica está nas possibilidades de investigação da biologia das células germinativas, visto que o transplante celular proporciona uma análise da gametogênese. Embora o transplante de espermatogônias apresente um enorme potencial teórico, a eficiência desta técnica ainda é relativamente baixa, o que aponta para a necessidade de estudos mais precisos em diferentes espécies (Griswold et al., 2001; Aponte et al., 2005; McLean, 2005; Ehmcke et al., 2006; Nóbrega et al., 2010). Estudar e entender o processo de gametogênese é fundamental para preservar uma espécie de interesse através da técnica de transplante celular, pois é necessário conhecer as características das células que serão utilizadas para colonizar a cavidade celomática do animal receptor.

## **2.4. Gametogênese nos animais**

O processo gametogênico é o evento responsável pela produção dos gametas nos animais de reprodução sexuada. Este ciclo ocorre nas gônadas e tem a meiose como evento fundamental, a qual reduz pela metade a quantidade de cromossomos das células, originando células haploides. A diploidia característica de cada espécie é reestabelecida após a fecundação, quando ocorre a fusão dos dois gametas haploides provindos do macho e da fêmea.

### **2.4.1. Espermatogênese**

No interior do túbulo seminífero, o processo espermatogênico ocorre de maneira cíclica e altamente organizada, dando origem aos espermatozoides a partir da diferenciação de espermatogônias diploides (Figura 3A). Baseado nas características morfofuncionais, a espermatogênese pode ser dividida em três fases (Figura 3B). Na fase proliferativa ou espermatogonial, as espermatogônias se dividem rápida e sucessivamente através da divisão mitótica, e estas células terão seu material genético duplicado, recombinado e segregado durante a fase meiótica ou espermatocitária. Esta segunda fase é importante para a diversidade genética entre membros de uma espécie e prepara as células para a fase de diferenciação ou espermiogênica, quando as espermátides passam por transformações morfogênicas, que culminam na formação dos espermatozoides (Russell et al., 1990; Sharpe, 1994). Após as

três etapas, os espermatozoides serão liberados no lúmen do túbulo seminífero, e a maturação espermática fará com que o gameta, morfológicamente preparado, torna-se funcionalmente apto para fertilizar o oócito (Yaffe, 1997; Schulz & Miura, 2002; Miura & Miura, 2003).

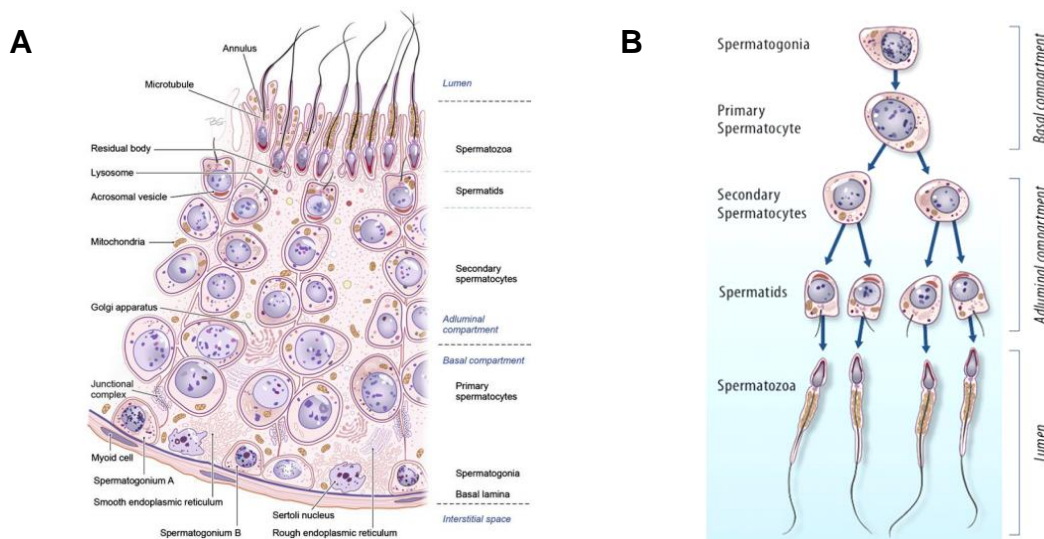


Figura 3. Representação das fases da espermatogênese. (A) Seção do epitélio germinal no túbulo seminífero, mostrando o local onde cada etapa da espermatogênese acontece. (B) Representação simplificada dos principais eventos da espermatogênese, durante a qual as células germinativas sofrem divisão mitótica e meiótica para reduzir o conteúdo cromossômico. Fonte: Sharma & Agarwal, 2011 (reimpresso com permissão, Cleveland Clinic Center for Medical Art & Photography).

#### 2.4.2. Espermatogênese nos peixes teleósteos

O processo espermatogênico nos peixes ocorre no interior de estruturas denominadas espermatocistos, ou cistos, que se formam a partir do envolvimento de uma espermatogônia primária ou do tipo A, pelos prolongamentos das células de Sertoli (Grier, 1993; Pudney, 1993 e 1995; Schulz et al., 2010). Além de fornecer suporte hormonal, mecânico e nutricional às células germinativas, as células de Sertoli fagocitam os corpos residuais, resultantes dos processos de morte celular programada e eliminação de citoplasma durante a formação espermática (Billard, 1970; Schulz & Nóbrega, 2011). As células germinativas derivadas desta espermatogônia continuam envolvidas por um número variado de células de Sertoli e sofrem divisões sincronizadas (Vilela et al., 2003). Portanto, diferentemente de mamíferos (Russell et al., 1990), as células de Sertoli normalmente estão em contato com apenas um grupo específico de célula germinativa, as quais evoluem ao longo do processo espermatogênico (Nóbrega et al., 2009; Schulz et al., 2010) (Figura 4).

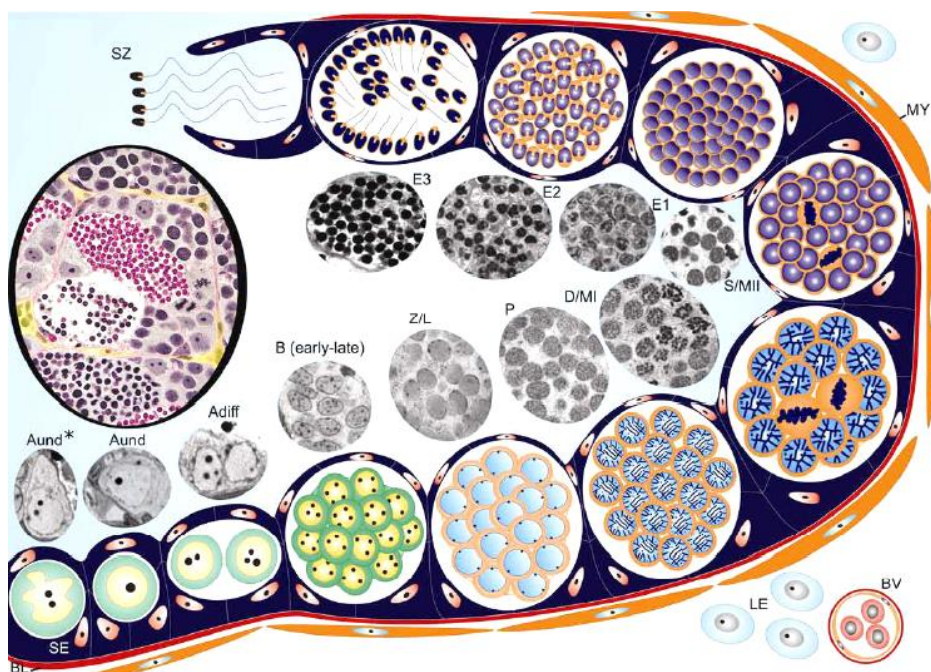


Figura 4. Desenho esquemático da espermatogênese dos peixes mostrando as células de Sertoli em contato com apenas um tipo específico de célula ao longo da espermatogênese. Legendas: células de Sertoli (SE); lâmina basal (BL); células peritubulares mióides (MY), células de Leydig (LE), espermatogônia (SG); espermatócito (SC); espermátide arredondada (RST); espermátide alongada (EST); espermatogônia do tipo A indiferenciada (Aund); espermatogônia do tipo A diferenciada (Adiff); espermatogônia do tipo B (B early-late); espermatócitos primários em leptóteno/zigóteno (L/Z), paquíteno (P), diplóteno/metáfase I (D/MI); espermatócitos secundários/metáfase II (S/MI); espermátides iniciais (E1); intermediárias (E2); finais (E3); espermatozoides (SZ); e vasos sanguíneos (BV). Fonte: Schulz et al., 2010.

### 2.4.3. Oogênese

As células reprodutoras femininas, os oócitos, são formadas a partir de um processo denominado oogênese (Figura 5), o qual é dividido em três etapas. Durante o processo de proliferação ou multiplicação, uma série de divisões mitóticas produz um grande número de oogônias. As sobreviventes transformam-se em células maiores durante o período de crescimento, acumulando substâncias nutritivas, e são denominadas oócitos primários ou oócitos I, os quais iniciam a meiose. Este processo é interrompido na prófase I e as células só terminam sua primeira divisão quando o indivíduo atinge a maturidade. As duas células filhas geradas têm tamanho diferentes, sendo que o oócito secundário recebe a maior parte do citoplasma e o primeiro corpúsculo polar praticamente não o recebe. Este oócito, que será lançado no momento da ovulação, começa a sofrer a segunda divisão da meiose, mas o processo é inibido na metáfase II. Caso não haja fecundação, a célula se degenera em aproximadamente um dia após a sua liberação. Entretanto, se houver o encontro do espermatozoide com o oócito II, a meiose continua e o oócito II

divide-se em duas células desiguais, o segundo corpúsculo polar que irá se degenerar, e ovo que é a união dos gametas feminino e masculino.

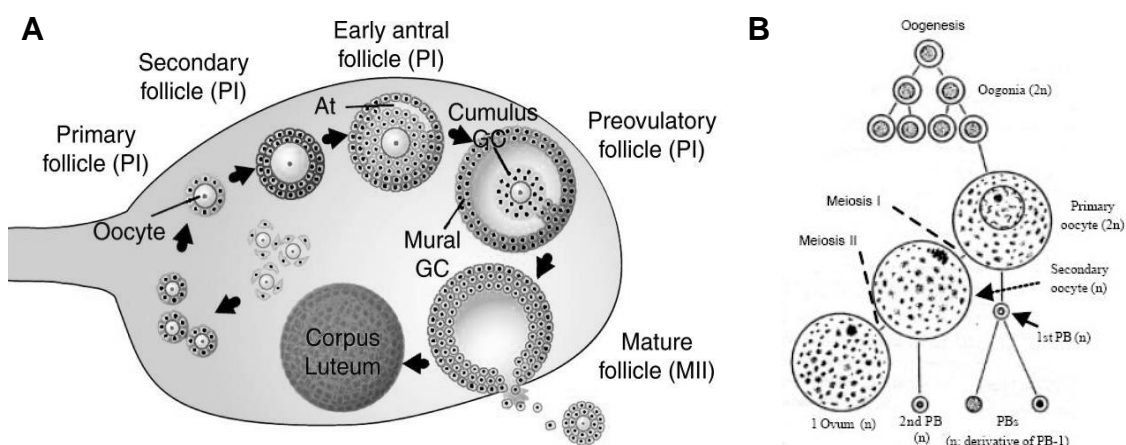


Figura 5. Oogênese. (A) Desenho esquemático das etapas do desenvolvimento dos oócitos e progressão meiótica. Legendas: folículo primário (P1); células da granulosa (GC); antro (At); oócito secundário (MII). Fonte: Von Stetina & Orr-Weaver, 2011. (B) Representação simplificada dos principais eventos da oogênese. Legendas: corpúsculo polar (PB); primeiro corpúsculo polar (PB-1). Fonte: Rahman et al., 2008.

#### 2.4.4. Oogênese nos peixes teleósteos

O desenvolvimento ovariano em peixes é separado em três categorias (Wallace and Selman, 1981): (a) síncrono, quando todos os oócitos desenvolvem e são liberados ao mesmo tempo, (b) síncrono em grupo, quando pelo menos duas populações de oócitos podem ser reconhecidas no ovário durante a estação reprodutiva, e (c) assíncrono, quando os oócitos de todos os estágios de desenvolvimento estão presentes sem uma população dominante.

O desenvolvimento dos oócitos (Figura 6) e o momento da desova podem diferir entre espécies, porém alguns estudos mostram diversas características semelhantes na formação dos oócitos maduros. A oogênese descrita anteriormente também acontece na maioria dos peixes teleósteos, mas vale ressaltar que a divisão em diferentes estágios ou etapas é artificial, visto que o desenvolvimento de oócitos é um processo bastante dinâmico e difícil de identificar o início ou o final de cada etapa (Lubzens et al., 2010). Uma importante diferença em comparação aos mamíferos é a proliferação contínua das oogônias nos peixes, renovando os estoques de oócitos e folículos jovens ao longo da vida (Tokarz, 1978).

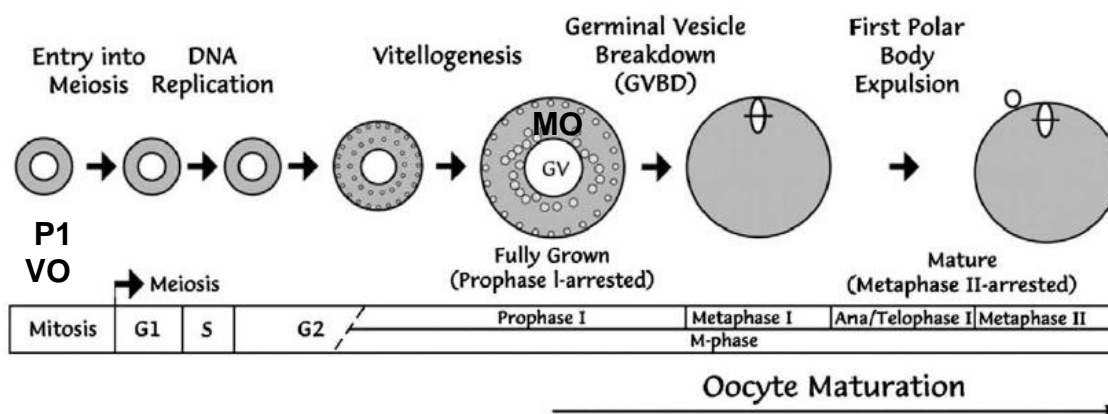


Figura 6. Descrição esquemática dos estádios de desenvolvimento dos oócitos em peixes teleósteos. Legenda: oócitos primários (P1), oócitos vitelogênicos (VO) e maduros (MO). Fonte: Lubzens et al., 2010.

### 2.5. Gene *dead end*

A identificação das células germinativas entre células testiculares e ovarianas é um passo crítico para o sucesso do transplante de espermatogônias e oogônias, e o desenvolvimento de marcadores moleculares torna-se um importante aliado na distinção das PGCs após a dissociação dos tecidos gonadais.

Identificado pela primeira vez em zebrafish (Weidinger et al., 2003), o gene *dead end* (*dnd*) é um componente do germoplasma e codifica uma proteína de ligação crucial para a migração e sobrevivência de células primordiais. Esta proteína é localizada em grânulos perinucleares dentro das PGCs, e diversos estudos de *knockdown* confirmaram a importância do *dnd* para o desenvolvimento adequado das gônadas em peixes teleósteos (Weidinger et al., 2003; Horvay et al., 2006; Kurokawa et al., 2007; Siegfried e Nusslein-Volhard, 2008; Skugor et al., 2013). Embora o gene seja expresso de maneira específica na linhagem germinativa durante a embriogênese de rã, galinha e rato (Weidinger et al., 2003), em organismos adultos, a expressão do *dnd* parece ser dependente do sexo do indivíduo. No rato, a expressão do *dnd1a* é exclusiva em células germinativas de testículos adultos (Bhattacharya et al., 2007), enquanto que em rãs a transcrição do gene é encontrada apenas no ovário (Horvay et al., 2006). O padrão de expressão do *dnd* em adultos de medaka (Liu et al., 2009) e turbot (Lin et al., 2013) ocorre em células germinativas de ambos os sexos.

O fato de este gene ser expresso apenas nas células germinativas faz com que o *dead end* seja um potencial marcador molecular para as PGCs. O seu padrão de expressão nas gônadas de cada espécie pode ser verificado através do sequenciamento genético e desenvolvimento de sondas capazes de reconhecer os locais específicos de expressão deste gene.

### 2.6. Gene *vasa*

Identificado pela primeira vez na espécie *Drosophila melanogaster* (Raz, 2000), o gene *vasa* é conhecido por se ligar de forma específica a sequências de RNA, sendo essencial para o desenvolvimento de células

germinativas e determinação da função das mesmas. Recentemente, foi descoberto que esta proteína também exerce uma função nas células-tronco multipotentes, embora o envolvimento exato ainda seja desconhecido (Gustafson and Wessel, 2010).

O gene *vasa* é bastante conservado entre vertebrados e invertebrados e é essencial durante a gametogênese e embriogênese. Na maioria das espécies, este gene é expresso exclusivamente nas células germinativas (Olsen et al., 1997; Yoon et al., 1997; Yoshizaki et al., 2000; Kobayashi et al., 2000; Shinomiya et al., 2000; Knaut et al., 2000; Xu et al., 2005; Saito et al., 2004; Cao et al., 2012), tornando-se um importante candidato para a identificação deste tipo celular. A expressão do gene *vasa* pode ser distinta entre as espécies, podendo ocorrer em células mitóticas e meióticas de ambos os sexos do Kingiuo (Xu et al., 2005) e medaka (Xu et al., 2009), nos oócitos vitelogênicos da dourada (Cardinali et al., 2004), ou até mesmo, em ovos infertilizados do robalo (Blazquez et al., 2011).

### 2.7. Tambaqui (*Colossoma macropomum*)

Popularmente conhecido como tambaqui, o *Colossoma macropomum* (Figura 7) é um peixe teleosteo migrador pertencente à família Characidae (Jegú, 2003) e destaca-se pelo grande potencial de cultivo em cativeiro. Esta espécie possui hábito alimentar diversificado (Honda, 1974; Goulding & Carvalho, 1982), rápido crescimento em águas ácidas (Aride et al., 2007), resistência à hipóxia (Baldisserotto, 2009) e à ação tóxica da amônia (Ismiño-Orbe, 1997), e é bastante apreciada por comunidades tradicionais na Amazônia (Gomes et al., 2010).



Figura 7. Tambaqui (*Colossoma macropomum*). Fonte: International Fish Association.

A espécie é nativa das bacias dos rios sul-americanos, Amazonas e Orinoco, podendo ser encontrada em diferentes áreas do continente (Figura 8). A ocorrência fora da área original se deve à alta resistência dos indivíduos, à alta frequência de escape nas fazendas produtoras de tambaqui (Lopes et al., 2017) e ao seu comportamento migratório, os quais favorecem o fluxo genético entre os sistemas hidrográficos (Fazzi-Gomes et al., 2017).



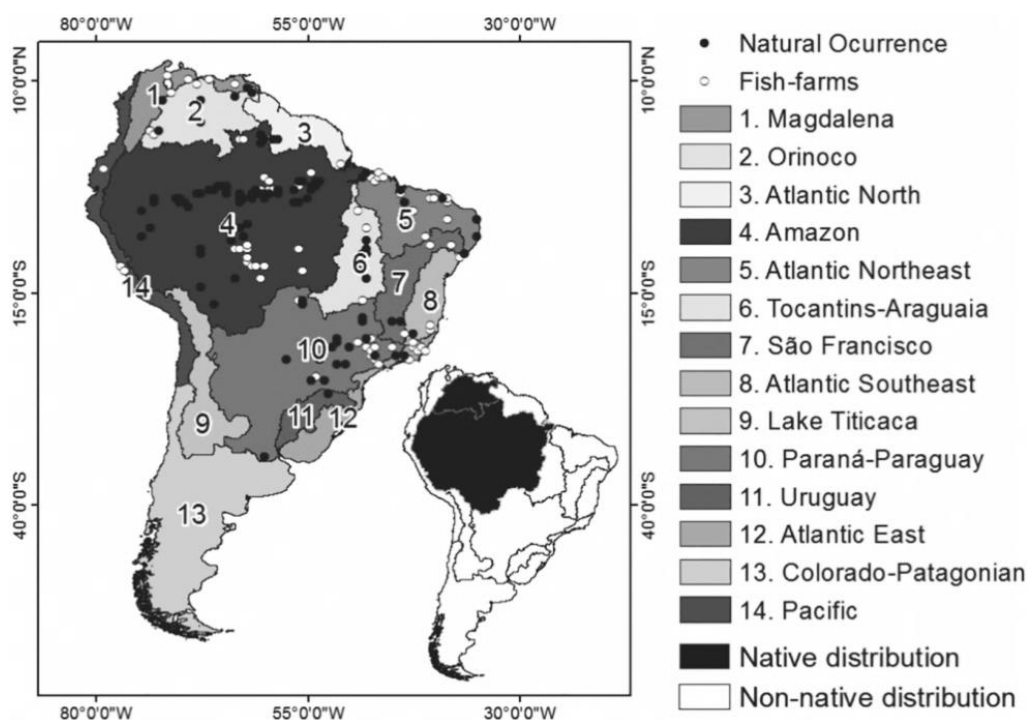


Figura 8. Ocorrência do *Colossoma macropomum* na América do Sul. O mapa menor representa a área de distribuição natural da espécie. Fonte: Lopes et al., 2017.

O tambaqui é o segundo maior peixe de escama da América do Sul (Gomes et al., 2010) e tem sido explorado pela pesca comercial na Amazônia desde o século XIX. Na década de 1980, a população do tambaqui declinou na Amazônia devido à captura excessiva, e o IBAMA (Instituto Brasileiro do Meio Ambiente e dos Recursos Naturais Renováveis) colocou a espécie na lista de animais protegidos durante o período de defeso (1º de novembro a 28 de fevereiro) (Boischio, 1992; Val & Honczark, 1995; IBAMA, 2003). Durante este período, que coincide com a reprodução da espécie, a pesca fica proibida na tentativa de recuperar os estoques. Em 2003, o Instituto também estabeleceu restrições para pesca em qualquer época do ano (Portarias 65 e 67 de 30/10/2003) e o comprimento total mínimo para captura e comercialização do tambaqui passou a ser 55 cm (Batista et al., 2004).

Com o passar dos anos, o tamanho dos indivíduos selvagens reduziu drasticamente e dentre os animais capturados nos anos de 2007 e 2008, apenas 1% encontrava-se no tamanho acima do limite permitido pelo IBAMA (Sousa et al., 2008; Garcez & Freitas, 2010). Desta forma, fica evidente que a alta taxa de exploração do tambaqui na região Amazônica está acima do rendimento máximo sustentável, indicando uma sobrepesca dos estoques remanescentes (Isaac & Ruffino, 1996; Batista & Petrere Jr., 2003; Araújo-Lima & Ruffino, 2004; Sánchez-Botero & Garcez, 2006; Sousa et al., 2008). A queda no abastecimento dos mercados, juntamente com a contínua redução do tamanho do peixe capturado, aumentou a demanda pelo tambaqui e os investimentos em produção em cativeiro e no cultivo da espécie.

Em cativeiro, o tambaqui atinge idade reprodutiva entre 4 e 5 anos, com tamanho aproximado de 55 cm, e as fêmeas podem desovar até duas vezes por ano (Streit Jr. et al., 2012). A idade reprodutiva é dependente das condições de manejo e cultivo, e alguns animais podem estar aptos para reproduzir antes da idade citada. Os indivíduos são ovulíparos, de desova total e a eclosão das larvas ocorre entre 20 e 25 horas após a fertilização, quando incubadas a uma temperatura média de 25°C.

Embora as populações de tambaqui ainda apresentem níveis satisfatórios de diversidade genética (Fazzi-Gomes et al., 2017), a redução dos estoques selvagens pode limitar o fluxo gênico entre os indivíduos e reduzir drasticamente a variabilidade genética do tambaqui em médio prazo (Figura 9).



Figura 9. Fatores que influenciam direta ou indiretamente na redução da variabilidade genética do tambaqui.

### 3. Hipóteses e objetivos

A hipótese central do trabalho propõe a possibilidade de isolamento dos genes *dead end* e *vasa* através da clonagem molecular, permitindo o estudo da expressão gênica nos tecidos de tabaqui. Neste sentido, o objetivo geral foi isolar e sequenciar os genes para estudo de suas expressões nas gônadas de indivíduos de idades distintas, e desenvolver sondas moleculares capazes de identificar as células germinativas primordiais.

Os objetivos específicos foram:

1. Clonar os genes *dead end* e *vasa*, utilizando a transformação e multiplicação bacteriana.
2. Sequenciar os genes para a obtenção das fases de leitura aberta que são compreendidas entre os códons de iniciação e terminação.
3. Utilizar os genes *dead end* e *vasa* como marcadores moleculares de células germinativas.

## **CAPÍTULO II**

Cloning, characterization and expression of *vasa* gene in the teleost fish *Colossoma macropomum*

Este capítulo é apresentado de acordo com as normas de publicação da **Gene**.

Fator de impacto: 2.415

Fator de impacto (5 anos): 2.266

Website: [www.journals.elsevier.com/gene](http://www.journals.elsevier.com/gene)

**Cloning, characterization and expression of *vasa* gene in teleost fish *Collossoma macropomum***

Ana Carina Nogueira Vasconcelos<sup>a\*</sup>, Goro Yoshizaki<sup>a</sup>, Anna Octavera<sup>a</sup>, Misako Miwa<sup>a</sup>, Raycon Roberto Freitas Garcia<sup>c</sup>, Daniel Antonio Rotili<sup>b</sup>, Danilo Pedro Streit Jr<sup>b</sup>

<sup>a</sup>Department of Marine Biosciences, Tokyo University of Marine Science and Technology, Tokyo, Japan

<sup>b</sup>Aquaculture Sector, Department of Animal Science, Federal University of Rio Grande do Sul - Porto Alegre, Rio Grande do Sul, Brazil.

<sup>c</sup>Department of Biological Sciences, Ji-paraná Lutheran University Center - Ji-Paraná, Rondônia, Brazil.

\*Corresponding author at: Present address

Aquaculture Sector, Department of Animal Science, Federal University of Rio Grande do Sul. Avenida Bento Gonçalves, 7712 Agronomia, Porto Alegre - Rio Grande do Sul. CEP 91540-000, Brazil.

E-mail: anacarina.vasconcelos@hotmail.com

Telephone: +55 37 988564822

## Abstract

The amazon species tambaqui *Colossoma macropomum* is a migratory fish with great potential for cultivation. The species is the second largest scaled fish in South America and is the native species most produced in Brazil. In consequence to the overfishing, the native fish stocks reduced considerably throughout the Amazon and large investments have been made to meet the demand for the species. Despite the populations in captivity still show satisfactory levels of genetic diversity, the reduced fish stock can prevent the genetic flow among individuals. In order to preserve the genetic resources possessing enough genetic diversity, the germ cell cryopreservation and transplantation have been studied in many fish species. To trace the behavior of the germ cell during their manipulation researches, a molecular marker to identify these cells is required and the *vasa* gene is a promising candidate since, in most species, research revealed a specific expression of the gene in the germ cells. Vasa is an RNA binding protein that encodes an ATP-dependent RNA helicase belonging to the DEAD-box family. It was first identified in *Drosophila* and known to be essential for germ cell development. In this study, the full sequence of *vasa* cDNA homolog from tambaqui was isolated and characterized, showing an open reading frame of 2,010 bp encoding 669 amino acids. The putative protein was shown to contain eight conserved motifs of the DEAD-box protein family and high similarity to *vasa* homologs of other species. The tambaqui *vasa* (*tvasa*) mRNA expression was specific to the gonad and the *in situ* hybridization showed signal only in oocytes and spermatogonia. These results suggested that *tvasa* can be used as a germ cells marker of this species.

Keywords: germ cells, molecular biology, sequencing, tambaqui

## 1. Introduction

Tambaqui (*Colossoma macropomum*) is the second largest scaled fish in South America and is the native fish most produced in Brazil. This migratory species is recognized for its great potential for captive cultivation due to its diversified food habit (Honda, 1974; Goulding & Carvalho, 1982), rapid growth in acidic water (Aride et al., 2007) and resistance to hypoxia (Baldisserotto, 2009). Since the species has been exploited by commercial fishing in the Amazon since the 19th century, fish stocks reduced considerably throughout the Amazon (Batista & Petrere Jr., 2003) and large investments have been made to enable captive cultivation and production, in order to meet the demand for the species.

Although tambaqui populations still show satisfactory levels of genetic diversity (Fazzi-Gomes et al., 2017), the reduction of the fish stock can limit gene flow among individuals and greatly reduce the wild population. Genetic diversity equivalent to that of natural populations can be achieved through the production of embryos in captivity using a sufficient number of breeding herds. However, the use of a high number of individuals, high costs in keeping the animals and spawning time asynchrony prevent this production.

In order to preserve the genetic resources semi-permanently, germ cell cryopreservation and its transplantation was developed and has been extensively studied today (Yoshizaki et al., 2011; Lee et al., 2013; 2015; 2016a; 2016b, 2016c). Since cryopreservation of fish eggs has not been possible due to its large size and high yolk and lipid contents, cryopreservation of immature germ cells can be an only method for long-term preservation of fish genetic resources (Yoshizaki et al., 2011). Recently, Lee et al (2013; 2015; 2016b) successfully developed a method to cryopreserve whole gonads and retrieve live germ cells. Further, the frozen and thawed germ cells were successfully converted to functional eggs and sperm via their transplantation into recipient fish (Lee et al., 2013). This transplantation technique consists of isolating germ cells from donor testes and injecting them into the peritoneal cavity of infertile recipients, giving rise to oocytes or spermatozoa, depending on the sex of the recipients (Okutsu et al., 2006a; Okutsu et al., 2007). Noticeably, if cells from more than one donor individual are mixed and used for the transplantation, a single recipient individual

produces gametes derived from different donor individuals (Sato et al., 2014), thereby increasing genetic variability within the population.

The success obtained in a variety of species (Morita et al., 2012; Farlora et al., 2014; Seki et al., 2017; Li et al., 2017; Hamasaki et al., 2017; Yoshikawa et al., 2017) has made possible the application of this biotechnology as a tool to repopulate wide range of endangered species.

To identify the cells after dissociation of the gonadal tissue and analyze the behavior of the germ cells, use of molecular markers is preferable. *vasa* gene is specifically expressed in germ cells of a wide range of animals from insects to mammals (Raz, 2000) and it is essential for germ cell formation, differentiation and maintenance (Lasko & Ashburner, 1988; Tanaka et al., 2000; Hartung et al., 2014). Here, we isolated and characterized tambaqui *vasa* (*tvasa*) cDNA and evaluated its use as a molecular marker for germ-line cells.

## 2. Materials and methods

### 2.1. RNA isolation

Fragments of ovary, testis, heart, brain, gill, liver, muscle, kidney, intestine and stomach were collected from 6, 8, 16, 26 and 30 months-old tambaqui. Total RNA was extracted from all tissues using a QuickPrep Total RNA Extraction Kit (Amersham Pharmacia Biotech). The quality of the isolated RNA was examined by spectrophotometer and 0.7% denaturing gel electrophoresis.

### 2.2. Reverse Transcription–Polymerase Chain Reaction (RT-PCR)

Two micrograms of total RNA was used for cDNA synthesis. First strand cDNA was synthesized by means of Ready-To-Go You-Prime First-Strand Beads (Amersham Pharmacia Biotech) with the adapter-oligo dT primer (5'-CTGATCTAGAGGTACCGGATCC-oligo dT-3'). RT-PCR was performed with degenerate primers (*Tqvasa*-forward: 5'-CCMGSAAAGTTYGCHTWTGGGACHTGTGT-3', *Tqvasa*-reverse: 5'-GAARGARACKGCYCKYCCDRTGTTKCCACA-3') that were designed using highly conserved regions of *vasa* homologues from *Drosophila*, zebrafish, medaka, rainbow trout, *Xenopus*, mouse and rat. The PCR reaction was carried out using 1 µl of cDNA products, 0.8 µl of dNTP, 1 µl of each primer 10 µM, 1



μl of ExTaq buffer (Takara Biomedicals), and 0.25 units of ExTaq enzyme (Takara Biomedicals) in a total volume of 10 μl. Amplification was performed with an initial denaturation step of 3 min at 94°C followed by 35 cycles as follows: denaturation for 30 s at 94°C, annealing for 30 s at 63.9 °C and extension for 1 min at 72°C. The final extension was performed for 3 minutes at 72 °C. PCR products were electrophoresed on 0.7% agarose gel and the DNA fragment that showed the predicted molecular weight was isolated using a Gelpure DNA Purification Kit (Gene Mate). The PCR-amplified DNA fragment was cloned into plasmid vector pGEM T-Easy (Promega) and sequenced.

### 2.3. Rapid Amplification of cDNA Ends (RACE)

To isolate a full-length cDNA, 3'-RACE and 5'-RACE system were performed (Invitrogen). After determining the DNA sequence of a partial *vasa* cDNA fragment, two specific primers for tambaqui *vasa* cDNA were synthesized (Tqvasa-3'UTR-Forward: 5'-CAACTACAAGCATCCATGGTGACCG GGAA-3', Tqvasa-5'UTR-Reverse: 5'-CCAAGTAACGAAGTTTACTTAGTCCGACCT-3') and used together with the primers 3' and 5' RACE provided by the kit. The PCR reaction was carried out using 1 μl of cDNA products, 0.8 μl of dNTP, 1 μl of each primer 10 μM (5' primer RACE + Tqvasa-5'UTR-Reverse; 3' primer RACE + Tqvasa-3'UTR-Forward), 1 μl of ExTaq buffer (Takara Biomedicals), and 0.25 units of ExTaq enzyme (Takara Biomedicals) in a total volume of 10 μl. Five reaction cycles were conducted, with each cycle consisting of 30 sec at 94 °C and 3 min at 68 °C. After, thirty five reaction cycles were conducted, and each cycle consisted of 30 sec at 94 °C, 30 sec at 65 °C, and 3 min at 72 °C, except that the first denaturation was carried out for 3 min at 94 °C and the last elongation reaction was carried out for 3 min at 72 °C. The PCR-product was diluted 100x and used as DNA sample for nested PCR. The PCR reaction was the same as the first PCR except that the annealing temperature was 62°C and the first five reaction cycles were not used. The provided 3'primer RACE nested and 5' primers RACE nested were used together with specific tambaqui *vasa* primer (Tqvasa-3'nested-Forward: 5'-CCGGGAACAACGAGAGCGAGAGAAAGCTCTT-3' and Tqvasa-5'nested-Reverse: 5'-GTCCGACCTTTCCACGACCAATGATGTCCA-3'). The dC-tailing reaction and PCR were performed according to the manufacturer's protocol.

Both the 3' and 5' RACE products were cloned into pGEM T-Easy vector (Promega) and used for DNA sequencing.

#### 2.4. Histology and In Situ Hybridization (ISH)

Fragments of tambaqui testes and ovaries were fixed with Bouin's solution, cut into 4  $\mu$ m-thick sections using standard paraffin-embedding methods, and stained with hematoxylin and eosin. Localization of *tvasa* mRNA was analyzed by *in situ* hybridization on the adjacent sections, as previously described (Nagasawa et al., 2009). A 1292 base pair (bp) cDNA fragment (from nucleotide number 542 to 1704; GenBank no. MG839489) of *tvasa* was used to synthesize an antisense RNA probe with digoxigenin-labeling.

### 3. Results

#### 3.1. Isolation of the *tvasa* and phylogenetic analysis

The full sequence of tambaqui *vasa* gene (added on GenBank no. MG839489) has an open reading frame of 2010 bp and the sequence alignment with other species indicates that the *vasa* gene kept high similarity among species (Table 1). The open reading frame encoded 669 amino acids and contained eight consensus sequences for the DEAD protein family (Linder et al., 1989) (Fig. 1). The phylogenetic analysis comparing the deduced protein sequence of *tvasa* with those of related proteins from other species revealed that the sequence obtained in this study belongs to the clade of Vasa (Fig. 2). Almost 35% of the amino acid between the N-terminus and amino acid position 169 were glycine residues. This region contained 8 repeats of each arginine-glycine and arginine-glycine-glycine (Fig. 3).

Table 1. The identities of *tvasa* to other *vasa* homologs.

Species	Identity	Species	Identity
<i>Pygocentrus nattereri</i>	87%	<i>Clarias gariepinus</i>	77%
<i>Cyprinus carpio</i>	86%	<i>Sinocyclocheilus rhinoceros</i>	76%
<i>Astyanax mexicanus</i>	85%	<i>Rhamdia quelen</i>	76%
<i>Salmo salar</i>	83%	<i>Carassius auratus</i>	75%
<i>Oncorhynchus mykiss</i>	83%	<i>Danio rerio</i>	72%
<i>Thunnus orientalis</i>	82%	<i>Mus musculus</i>	65%
<i>Ictalurus punctatus</i>	77%	<i>Drosophila melanogaster</i>	50%

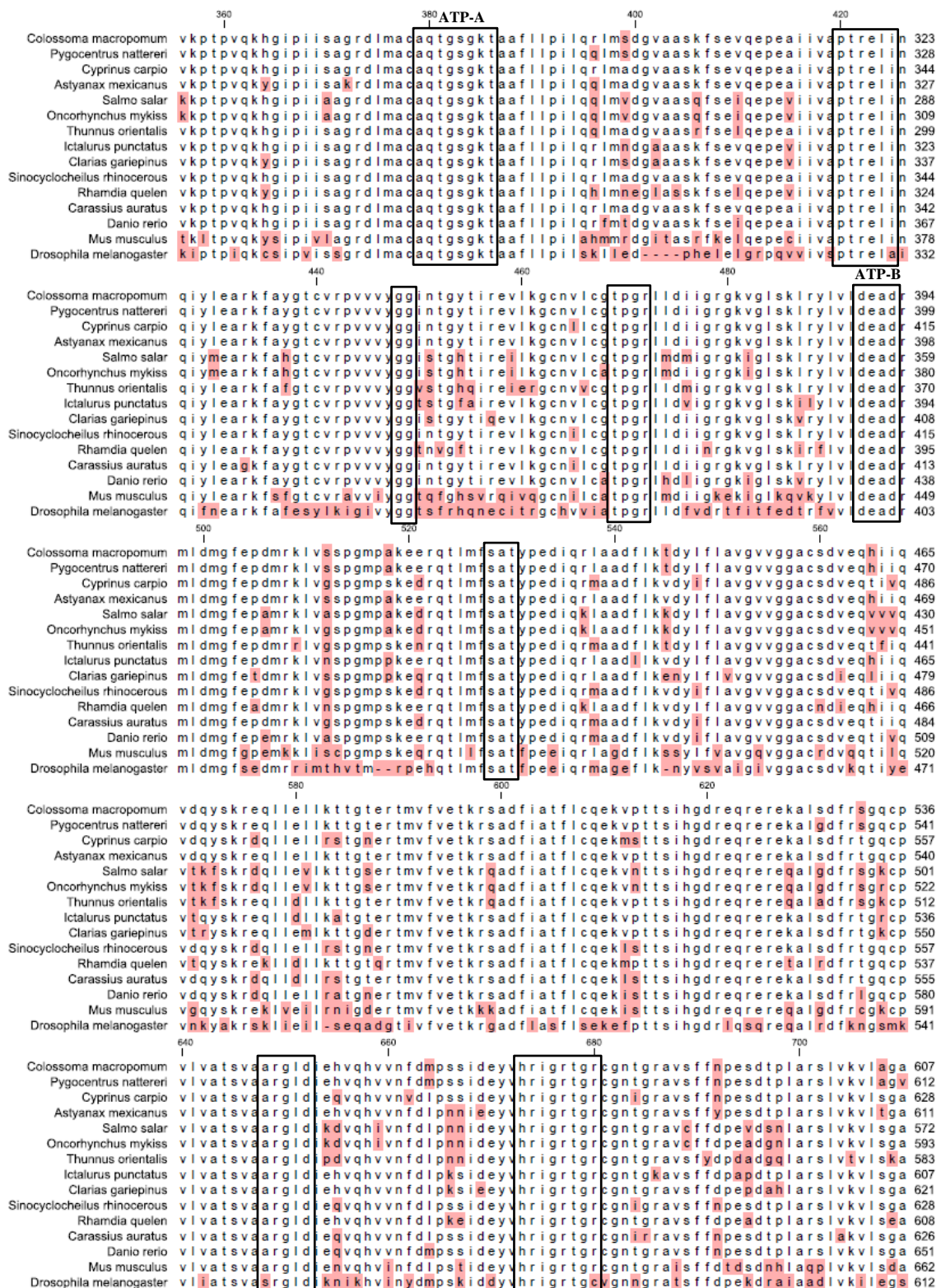


Fig. 1. Multialignment of the tVasa sequence with the other Vasa proteins. The different amino acid residues are highlighted in gray. Eight consensus sequences for the DEAD protein family, including and ATP-A motif and ATP-B motif, are boxed. The GenBank accession numbers of the aligned amino acid sequences were as follows: *Colossoma*

*macropomum* MG839489, *Pygocentrus nattereri* XP\_017552779.1, *Astyanax mexicanus* XP\_022536980.1, *Rhamdia quelen* AHL68988.1, *Ictalurus punctatus* XP\_017345570.1, *Carassius auratus* AAX22126.1, *Sinocyclocheilus rhinoceros* XP\_016377561.1, *Cyprinus carpio* AAL87139.2, *Danio rerio* XP\_005156510.1, *Clarias gariepinus* ADK94762.1, *Salmo salar* XP\_013998855.1, *Oncorhynchus mykiss* CDQ76412.1, *Thunnus orientalis* ABY77970.1, *Mus musculus* AAI44761.1, *Drosophila melanogaster* CAA31405.1.

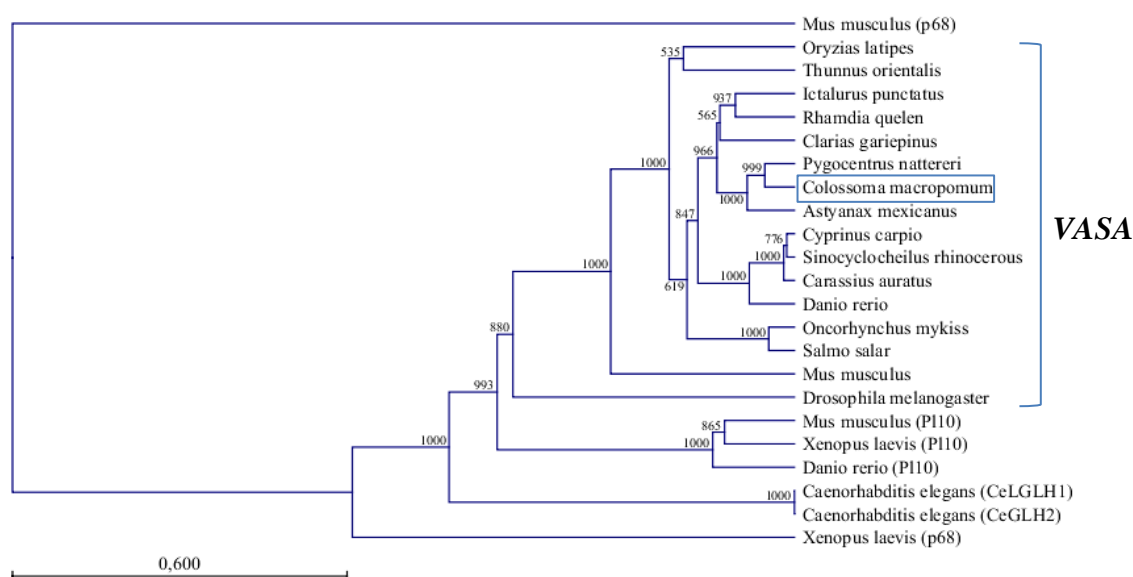


Fig. 2. Phylogenetic tree of DEAD-box proteins, using UPGMA method with CLC Main Workbench 6. Numbers next to nodes are bootstrap values based on 1000 replicates, which indicate the reliability of branches in each tree. The GenBank accession numbers of the aligned amino acid sequences were as follows: *Colossoma macropomum* MG839489, *Pygocentrus nattereri* XP\_017552779.1, *Astyanax mexicanus* XP\_022536980.1, *Rhamdia quelen* AHL68988.1, *Ictalurus punctatus* XP\_017345570.1, *Carassius auratus* AAX22126.1, *Sinocyclocheilus rhinoceros* XP\_016377561.1, *Cyprinus carpio* AAL87139.2, *Danio rerio* XP\_005156510.1, *Clarias gariepinus* ADK94762.1, *Salmo salar* XP\_013998855.1, *Oncorhynchus mykiss* CDQ76412.1, *Thunnus orientalis* ABY77970.1, *Mus musculus* AAI44761.1, *Drosophila melanogaster* CAA31405.1, *Xenopus laevis* NP\_001080283.1 (P110), *Mus musculus* NP\_149068.1 (P110), *Danio rerio* AAH59794.1 (P110), *Caenorhabditis*

*elegans* EAX88412 (CeGLH2), *Caenorhabditis elegans* AAC27384.1 (CeLGLH1), *Xenopus laevis* AAH82849.1 (p68), *Mus musculus* AAB53236.1 (p68).



Fig. 3. N-terminal region of tVasa amino acid sequence. Arginine-glycine repeats and arginine-glycine-glycine repeats in the N-terminal region are underlined and double underlined, respectively.

### 3.2. Germ cells specific localization of *tvasa* mRNA

RT-PCR products showed that *tvasa* was detectable only in testes and ovaries of tambaqui (Fig. 4), and no expression was detected in other tissues. Further investigation of *tvasa* mRNA localization of tambaqui was conducted by ISH on serial ovary and testis sections and it showed strong positive signal in oocytes and spermatogonia (Fig. 5).

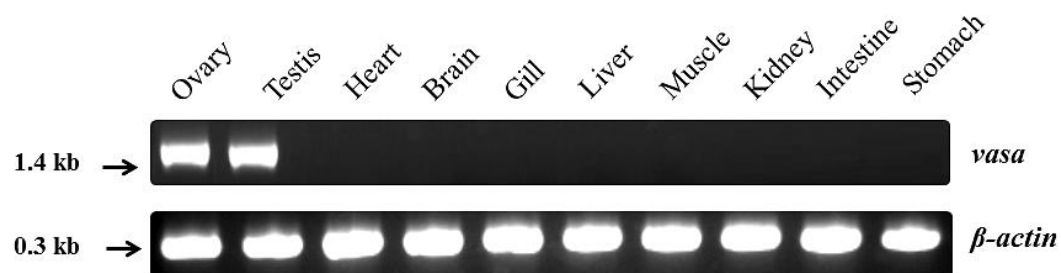


Fig. 4. Expression of *tvasa* in the tissues.  $\beta$ -actin served as a loading control

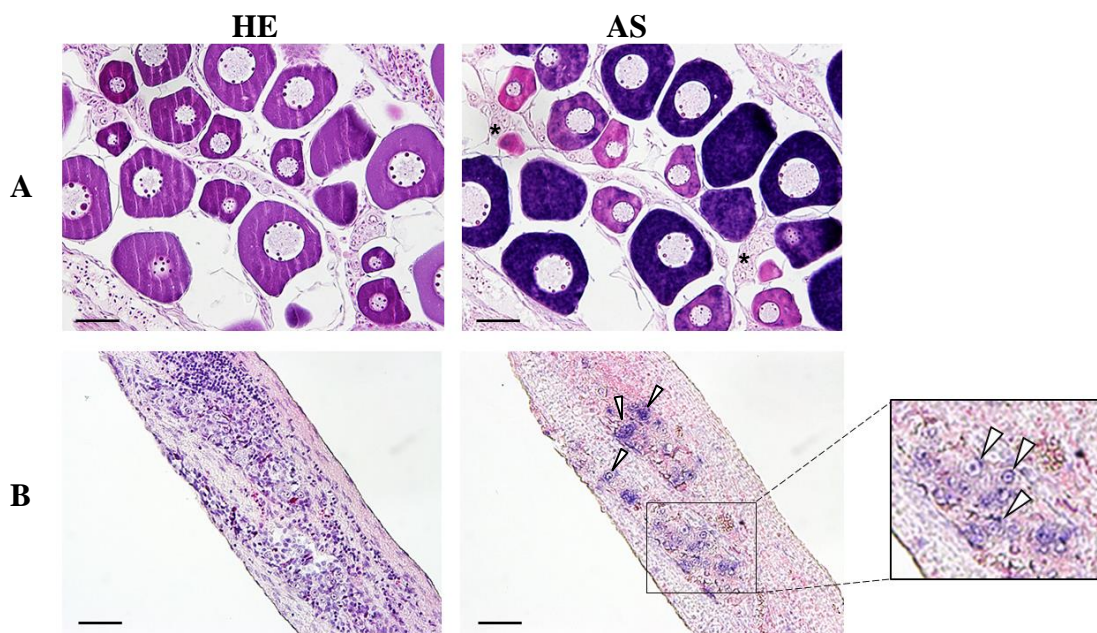


Fig. 5. *In situ* hybridization (ISH) analysis of *vasa* mRNA expression in gonad sections of *Collossoma macropomum*. (A) Ovarian expression of *vasa* gene showing strong signal in oocytes (with asterisks indicating the oogonia). (B) Testicular expression of *vasa* gene showing signal in spermatogonia (white arrows) and no signal in spermatocytes and spermatids. HE: hematoxylin-eosin staining; AS: antisense probe. Scale bar = 50 $\mu$ m.

#### 4. Discussion

In tambaqui, there are presently no markers available for germ cells other than morphological characteristics to date. Since the *vasa* gene shows high specificity and it is widely conserved throughout the animal kingdom (Cao et al., 2012), the gene is the most documented molecular marker of germ cells in teleosts (Lin et al., 2012). Here we show that the amino acid sequence of the clone isolated in this study contained eight consensus sequences for the DEAD protein family, and the absence of mutation in the ATP-A motif (AXXXXGKT), the ATP-B motif (DEAD), the RNA unwinding motif (SAT) and the RNA binding motif (HRIGRXXR) (Pause & Sonenberg, 1992) suggesting it does not contain any contradiction as an helicase at least from its structural point of view since these motifs are required for ATP binding and hydrolysis (Tanner et al., 2003).

The tVasa had a glycine-rich region in the N-terminal, which was also found in *Drosophila* (Hay et al., 1988), mouse (Fujiwara et al., 1994), *Xenopus* (Komiya et al., 1994) and rainbow trout (Yoshizaki et al., 2000). It is believed that this region is characteristic of a single-stranded nucleic acid binding proteins such as RNA helicase (Hay et al., 1988). Moreover, the tVasa sequence contained acidic amino acid, aspartate (D) and glutamate (E), around the tryptophan (W) residues located at the N- and C-terminal regions, which is characteristic of Vasa protein (Blázquez et al., 2011).

The deduced amino acid sequence from the full-length cDNA showed 71% similarity and 50% identity with the *Drosophila melanogaster* Vasa, which was originally identified as a maternal-effect gene (Schupbach & Wieschaus, 1986), and 82% similarity and 65% identity with the *Mus musculus* Vasa, which has been functionally analyzed by gene knock-out techniques (Tanaka et al., 2000). Further, the phylogenetic analysis of the DEAD-box proteins family revealed that the tVasa belongs to a branch of vasa orthologues. Taken together with the results of the homology analyses and the consensus sequence analyses, this phylogenetic tree analyses revealed that the cDNA clone isolated in this study is surely a *vasa* homologue of tambaqui.

The *vasa* expression in the tissues of tambaqui showed a restricted presence in the gonads, in agreement with the role of *vasa* as a translational regulator in germ line development (Braat et al., 1999). Similar germ cell-specific expression of *vasa* has been reported in zebrafish (Olsen et al., 1997; Yoon et al., 1997; Knaut et al., 2000), rainbow trout (Yoshizaki et al., 2000), tilapia (Kobayashi et al. 2000), medaka (Shinomiya et al., 2000), *Gymnogobius* (Saito et al., 2004), gibel carp (Xu et al., 2005), rare minnow (Cao et al., 2012), rice field eel (Ye et al., 2007), bluefin tuna (Nagasawa et al., 2009), grass carp (Li et al., 2010), European sea bass (Blázquez et al., 2011), turbot (Lin et al., 2012), Atlantic cod (Presslauer et al., 2012), blue tilapia (Xiao et al., 2013) and Lusitanian toadfish (Úbeda-Manzanaro et al., 2014).

In male of tambaqui, the *vasa* signal was present only in spermatogonia, and no signals were obtained in more advanced stage testes. Since some fish species also showed *vasa* expression in spermatocytes (Kobayashi et al., 2000; Xu et al., 2005; Ye et al., 2007; Cao et al., 2012; Lin et al., 2012; Xiao et al., 2013; Pacchiarini et al., 2013a; Pacchiarini et al., 2013b; Úbeda-Manzanaro et al., 2014; Yuan et al., 2014) and others showed its



predominant expression in spermatogonia (Yano et al., 2008), we need further studies to conclude *tvasa* expression in more developed germ cells.

In females of tambaqui, the absence of *vasa* mRNA in the oogonia could be due to its low level expression in this early stage of oogenesis and the increased expression in previtellogenic oocytes. This may be related to the fact that *vasa* mRNA works as maternally deposited factors (Pelegri et al., 1999), which play important roles for germ-line formation in the next generations (Schupbach & Wieschaus, 1986; Hay et al., 1990). Further, this expression profile in female germ-line suggests that the accumulation of *vasa* maternal factor could be occurred prior to the vitellogenesis starts. The specific expression of *tvasa* in the germ cells makes the gene a useful marker for germ cell lineage and to study germ cell manipulations as well as basic studies to reveal the role of this protein during germ-line formation and early gametogenesis.

### **Acknowledgements**

We thank all students and technicians from the Goro Yoshizaki's Lab at the Tokyo University of Marine Science and Technology.

### **Funding sources**

This work was partly supported by Grant-in-Aid for Scientific Research (KAKENHI) on Innovative Areas, 'Mechanisms regulating gamete formation in animals' (#25114005), and Conselho Nacional de Desenvolvimento Científico e Tecnológico (CNPq).

### **Competing Interests**

The authors declare no competing interests.

### **References**

- Arde, P. H. R., Roubach, R., Val, A. L., 2007. Tolerance response of tambaqui *Colossoma macropomum* (Cuvier) to water pH. *Aquaculture Research* 38, 588-594.
- Baldisserotto, B., 2009. Respiração e circulação. In: Baldisserotto, B (Eds.), *Fisiologia de peixes aplicada à piscicultura*. 2 ed. Editora UFSM, Santa Maria, 2009. pp. 53-75.

Batista, V. S., Petrere, J. R. M., 2003. Characterization of the commercial fish production landed at Manaus, Amazonas state, Brazil. *Acta amazonica* 33, 53-66.

Blázquez, M., González, A., Mylonas, C. C., Piferrer F., 2011. Cloning and sequence analysis of a *vasa* homologue in the European sea bass (*Dicentrarchus labrax*): tissue distribution and mRNA expression levels during early development and sex differentiation. *General and Comparative Endocrinology* 170, 322–333.

Braat, A. K., Speksnijder, J. E., Zivkovic, D., 1999. Germ line development in fishes. *International Journal of Developmental Biology* 43, 745–760.

Cao, M., Yang, Y., Xu, H., Duan, J., Cheng, N., Wang, J., Hu, W., Zhao, H., 2012. Germ cell specific expression of *Vasa* in rare minnow, *Gobiocypris rarus*. *Comparative Biochemistry and Physiology Part A: Molecular & Integrative Physiology* 162, 163–170.

Farlora, R., Hattori-Ihara, S., Takeuchi, Y., Hayashi, M., Octavera, A., Alimuddin., Yoshizaki, G., 2014. Intraperitoneal Germ Cell Transplantation in the Nile Tilapia *Oreochromis niloticus*. *Marine Biotechnology* 16, 309-320.

Fazzi-Gomes, P., Guerreiro, S., Palheta, G. D. A., Melo, N. F. A. C., Santos, S., Hamoy, I., 2017. High genetic diversity and connectivity in *Colossoma macropomum* in the Amazon basin revealed by microsatellite markers. *Genetics and Molecular Biology* 40, 142-146.

Fujiwara, Y., Komiya, T., Kawabata, H., Sato, M., Fujimoto, H., Furusawa, M., Noce, T., 1994. Isolation of a DEAD-family protein gene that encodes a murine homolog of *Drosophila vasa* and its specific expression in germ cell lineage. *Proceedings of the National Academy of Sciences USA* 91, 12258-12262.

Goulding, M., Carvalho, M. L., 1982. Life history and management of the tambaqui (*Colossoma macropomum*, Characidae): an important Amazonian food fish. *Revista Brasileira de Zoologia* 1, 107-133.

Hamasaki, M., Takeuchi, Y., Yazawa, R., Yoshikawa, S., Kadomura, K., Yamada, T., Miyaki, K., Kikuchi, K., Yoshizaki, G., 2017. Production of tiger puffer *Takifugu rubripes* offspring from triploid grass puffer *Takifugu niphobles* parents. *Marine Biotechnology* 19, 579-591.

Hartung, O., Forbes, M. M., Marlow, F. L., 2014. Zebrafish *vasa* is required for germ-cell differentiation and maintenance. *Molecular Reproduction and Development* 81, 946-961.

Hay, B., Jan, L. Y., Jan, Y. N., 1988. A protein component of *Drosophila* polar granules is encoded by *vasa* and has extensive sequence similarity to ATP-dependent helicases. *Cell* 55, 577-587.

Hay, B., Jan, L. Y., Jan, Y. N., 1990. Localization of *vasa*, a component of *Drosophila* polar granules, in maternal-effect mutants that alter embryonic anteroposterior polarity. *Development* 109, 425-33.

Honda, E. M. S., 1974. Contribuição ao conhecimento da biologia de peixes do Amazonas. II - Alimentação de tambaqui, *Colossoma bidens* (Spix). *Acta Amazonica* 4, 47-53.

Jia, R., Nie, L., Wang, N., Wang, J., 2009. Molecular cloning and expression patterns of the *Vasa* gene from *Rana nigromaculata* (Amphibia: Anura). *Zoologia* 26, 316-322.

Knaut, H., Pelegri, F., Bohmann, K., Schwarz, H., Nüsslein-Volhard, C., 2000. Zebrafish *vasa* RNA but not its protein is a component of the germ plasm and segregates asymmetrically before germline specification. *Journal of Cell Biology* 149, 875-88.

Kobayashi, T., Kajiura-Kobayashi, H., Nagahama, Y., 2000. Differential expression of vasa homologue gene in the germ cells during oogenesis and spermatogenesis in a teleost fish, tilapia, *Oreochromis niloticus*. *Mechanisms of Development* 99, 139–142.

Komiya, T., Itoh, K., Ikenishi, K., Furusawa, M., 1994. Isolation and characterization of a novel gene of the DEAD box protein family which is specifically expressed in germ cells of *Xenopus laevis*. *Developmental Biology* 162, 354-63.

Lasko, P. F., Ashburner, M., 1988. The product of the *Drosophila* gene vasa is very similar to eukaryotic initiation factor-4A. *Nature* 335, 611–617.

Lee, S., Iwasaki, Y., Shikina, S., Yoshizaki, G., 2013. Generation of functional eggs and sperm from cryopreserved whole testes. *Proceedings of the National Academy of Sciences USA* 110, 1640-1645.

Lee, S., Seki, S., Katayama, N., Yoshizaki, G., 2015. Production of viable trout offspring derived from frozen whole fish. *Scientific Reports* 5:16045.

Lee, S., Yoshizaki, G., 2016. Successful cryopreservation of spermatogonia in critically endangered Manchurian trout (*Brachymystax lenok*). *Cryobiology* 72, 165-168.

Lee, S., Katayama, N., Yoshizaki, G., 2016b. Generation of juvenile rainbow trout derived from cryopreserved whole ovaries by intraperitoneal transplantation of ovarian germ cells. *Biochemical and Biophysical Research Communications* 478, 1478-83.

Lee, S., Iwasaki, Y., Yoshizaki, G., 2016c. Long-term (5 years) cryopreserved spermatogonia have high capacity to generate functional gametes via interspecies transplantation in salmonids. *Cryobiology* 73, 286-290.

Li, C. J., Liu, L., Chen, X. H., Zhang, T., Gan, F., Cheng, B. L., 2010. Identification of a Vasa homologue gene in grass carp and its expression pattern in tissues and during

embryogenesis. *Comparative Biochemistry and Physiology - Part B: Biochemistry & Molecular Biology* 157, 159–166.

Li, Q., Fujii, W., Naito, K., Yoshizaki, G., 2017. Application of dead end-knockout zebrafish as recipients of germ cell transplantation. *Molecular Reproduction and Development* 84, 1100-1111.

Lin, F., Xu, S., Ma, D., Xiao, Z., Zhao, C., Xiao, Y., Chi, L., Liu, Q., Li, J., 2012. Germ line specific expression of a vasa homologue gene in turbot (*Scophthalmus maximus*): evidence for vasa localization at cleavage furrows in euteleostei. *Molecular Reproduction and Development* 79, 803–813.

Linder, P., Lasko, P. F., Ashburner, M., Leroy, P., Nielsen, P. J., Nishi, K., Schnier, J., Slonimski, P. P., 1989. Birth of the D-E-A-D box. *Nature* 337, 121-122.

Morita, T., Kumakura, N., Morishima, K., Mitsuboshi, T., Ishida, M., Hara, T., Kudo, S., Miwa, M., Ihara, S., Higuchi, K., Takeuchi, Y., Yoshizaki, G., 2012. Production of donor-derived offspring by allogeneic transplantation of spermatogonia in the yellowtail (*Seriola quinqueradiata*). *Biology of Reproduction* 86, 1-11.

Nagasawa, K., Takeuchi, Y., Miwa, M., Higuchi, K., Morita, T., Mitsuboshi, T., Miyaki, K., Kadomura, K., Yoshizaki, G., 2009. cDNA cloning and expression analysis of a vasalike gene in Pacific bluefin tuna *Thunnus orientalis*. *Fish Science* 75, 71–79.

Okutsu, T., Shikina, S., Kanno, M., Takeuchi, Y., Yoshizaki, G., 2007. Production of trout offspring from triploid salmon parents. *Science* 317, 1517.

Okutsu, T., Suzuki, K., Takeuchi, Y., Takeuchi, T., Yoshizaki, G., 2006a. Testicular germ cells can colonize sexually undifferentiated embryonic gonad and produce functional eggs in fish. *Proceedings of the National Academy of Sciences USA* 103, 2725–2729.

Okutsu, T., Yano, A., Nagasawa, K., Shikina, S., Kobayashi, T., Takeuchi, Y., Yoshizaki, G., 2006b. Manipulation of fish germ cell: visualization, cryopreservation and transplantation. *Journal of Reproduction and Development* 52, 685-693.

Olsen, L. C., Aasland, R., Fjose, A., 1997. A vasa-like gene in zebrafish identifies putative primordial germ cells. *Mechanisms of Development* 66, 95-105.

Pacchiarini, T., Cross, I., Leite, R. B., Gavaia, P., Ortiz-Delgado, J. B., Pousão-Ferreira, P., Rebordinos, L., Sarasquete, C., Cabrita, E., 2013a. *Solea senegalensis* vasa transcripts: molecular characterisation, tissue distribution and developmental expression profiles. *Reproduction, Fertility and Development* 25, 646–660.

Pacchiarini, T., Sarasquete, C., Cabrita, E., 2013b. Development of interspecies testicular germ-cell transplantation in flatfish. *Reproduction, Fertility and Development* 26, 609-702.

Pause, A., Sonenberg, N., 1992. Mutational analysis of a DEAD box RNA helicase: the mammalian translation initiation factor eIF-4A. *EMBO Journal* 11, 2643–2654.

Pelegri, F., Knaut, H., Maischein, H-M., Schulte-Merker, S., Nüsslein-Volhard, C., 1999. A mutation in the zebrafish maternal-effect gene *nebel* affects furrow formation and vasa RNA localization. *Current Biology* 9, 1431–1440.

Presslauer, C., Nagasawa, K., Fernandes, J. M., Babiak, I., 2012. Expression of vasa and nanos3 during primordial germ cell formation and migration in Atlantic cod (*Gadus morhua* L.). *Theriogenology* 78, 1262–1277.

Raz, E., 2000. The function and regulation of *vasa*-like genes in germ-cell development. *Genome Biology* 1: reviews1017.1–1017.6.

Saito, T., Otani, S., Fujimoto, T., Suzuki, T., Nakatsuji, T., Arai, K., Yamaha, E., 2004. The germ line lineage in ukigori, *Gymnogobius species* (Teleostei: Gobiidae) during embryonic development. *International Journal of Developmental Biology* 48, 1079-85.

- Sato, M., Morita, T., Katayama, N., Yoshizaki, G., 2014. Production of genetically diversified fish seeds using spermatogonial transplantation. *Aquaculture* 422-423, 218-224.
- Schupbach, T., Wieschaus, E., 1986. Maternal-effect mutations altering the anterior-posterior pattern of the *Drosophila* embryo. *Roux's archives of developmental biology* 195, 302–317.
- Seki, S., Kusano, K., Lee, S., Iwasaki, Y., Yagisawa, M., Ishida, M., Hiratsuka, T., Sasado, T., Naruse, K., Yoshizaki, G., 2017. Production of the medaka derived from vitrified whole testes by germ cell transplantation. *Scientific Reports* 7, 43185.
- Shinomiya, A., Tanaka, M., Kobayashi, T., Nagahama, Y., Hamaguchi, S., 2000. The vasa-like gene, olvas, identifies the migration path of primordial germ cells during embryonic body formation stage in the medaka, *Oryzias latipes*. *Development, Growth and Differentiation* 42, 317-26.
- Takeuchi, Y., Yoshizaki, G., Takeuchi, T., 2004. Surrogate broodstock produces salmonids. *Nature* 430, 629-630.
- Tanaka, S. S., Toyooka, Y., Akasu, R., Katoh-Fukui, Y., Nakahara, Y., Suzuki, R., Yokoyama, M., Noce, T., 2000. The mouse homolog of *Drosophila* Vasa is required for the development of male germ cells. *Genes & Development* 14, 841-53.
- Tanner, N. K., Cordin, O., Banroques, J., Doe`Re, M., Linder, P., 2003. The Q Motif: a newly identified motif in dead box helicases may regulate ATP binding and hydrolysis. *Molecular Cell* 11, 127–138.
- Úbeda-Manzanaro, M., Rebordinos, L., Sarasquete, C., 2014. Cloning and characterization of Vasa gene expression pattern in adults of the Lusitanian toadfish *Halobatrachus didactylus*. *Aquatic Biology* 21, 37-46.

Xiao, J., Luo, Y., Chen, L., Yang, L., Huang, Y., Guo, Z., Guo, E., Tang, Z., Zhang, M., Gan, X., 2013. Molecular cloning of vasa gene and the effects of LHRH-A on its expression in blue tilapia *Oreochromis aureus*. *Fish Physiology and Biochemistry* 39, 931–940.

Xu, H., Gui, J., Hong, Y., 2005. Differential expression of vasa RNA and protein during spermatogenesis and oogenesis in the gibel carp (*Carassius auratus gibelio*), a bisexually and gynogenetically reproducing vertebrate. *Developmental Dynamics* 233, 872-82.

Yano, A., Suzuki, K., Yoshizaki, G., 2008. Flow-cytometric isolation of testicular germ cells from rainbow trout (*Oncorhynchus mykiss*) carrying the green fluorescent protein gene driven by trout *vasa* regulatory regions. *Biology of Reproduction* 78, 151–158.

Ye, D., Lv, D., Song, P., Peng, M., Chen, Y., Guo, Y., Yang, Q., Hu, Y., 2007. Cloning and characterization of a rice field eel vasa-like gene cDNA and its expression in gonads during natural sex trans - formation. *Biochemical Genetics* 45, 211–224.

Yoon, C., Kawakami, K., Hopkins, N., 1997. Zebrafish vasa homologue RNA is localized to the cleavage planes of 2- and 4-cell-stage embryos and is expressed in the primordial germ cells. *Development* 124, 3157-3165.

Yoshikawa, H., Takeuchi, Y., Ino, Y., Wang, J., Iwata, G., Kabeya, N., Yazawa, R., Yoshizaki, G., 2017. Efficient production of donor-derived gametes from triploid recipients following intra-peritoneal germ cell transplantation into a marine teleost, Nibe croaker (*Nibea mitsukurii*). *Aquaculture* 478, 35-47.

Yoshizaki, G., Sakatani, S., Tominaga, H., Takeuchi, T., 2000. Cloning and characterization of a vasa-like gene in rainbow trout and its expression in the germ cell lineage. *Molecular Reproduction and Development* 55, 364-371.



Yoshizaki, G., Fujinuma, G., Iwasaki, Y., Okutsu, T., Shikina, S., Yazawa, R., Takeuchi, Y., 2011. Spermatogonial transplantation in fish: A novel method for the preservation of genetic resources. *Comparative Biochemistry and Physiology - Part D: Genomics and Proteomics* 6, 55-61.

Yuan, Y., Li, M., Hong, Y., 2014. Light and electron microscopic analyses of Vasa expression in adult germ cells of the fish medaka. *Gene* 545, 15-22.

### **CAPÍTULO III**

First evidence of alternative splicing of *dead end gene in fish*

Este capítulo é apresentado de acordo com as normas para publicação da **Scientific Reports**.

Fator de impacto (2 anos): 4.259

Fator de impacto (5 anos): 4.847

Website: <https://www.nature.com/srep/>

## First evidence of alternative splicing of *dead end* gene in fish

Ana Carina Nogueira Vasconcelos<sup>1,2,\*</sup>, Goro Yoshizaki<sup>1</sup>, Anna Octavera<sup>1</sup>, Misako Miwa<sup>1</sup>, Danilo Pedro Streit Jr<sup>2</sup>

<sup>1</sup>Tokyo University of Marine Science and Technology, Department of Marine Biosciences, Tokyo, 108-8477, Japan

<sup>2</sup>Federal University of Rio Grande do Sul, Department of Animal Science, Porto Alegre, 91540-000, Brazil

\*anacarina.vasconcelos@hotmail.com

### Abstract

The Amazon species *Colossoma macropomum* (tambaqui) has been exploited commercially since the late 19<sup>th</sup> century due the appreciated flavor and rapid growth. However, declining of its natural resources due to overexploitation and the climate change is concerned. Although germ cell cryopreservation and transplantation can be a silver bullet to preserve their genetic resources, their germ cell behavior has not been analyzed to date. Here we isolated tambaqui *dnd* homolog (*tdnd*) and used it as a molecular marker for germ cells, in order to obtain basic information essential for transplantation. The amino acid sequence showed 98% similarity and 53% identity with the zebrafish *dead end*. Phylogenetic analysis and the presence of consensus motifs known for *dnd* revealed that the *tdnd* surely encodes *dnd* orthologue, and it was detectable only in testes and ovaries, showing strong positive signal in oocytes and undetectable signal in oogonia and meiotic cells of the testis. The sequencing analyses revealed three different transcripts of *tdnd* and the quantitative PCR showed that the expression profile of the full-length transcript had distinctive tendency to those of short transcripts, including the alternative splicing variant, suggesting that they play distinctive roles for germ-line development in this species.

## Introduction

The control of eukaryotic gene expression is very complex and refined, and virtually all cells possessed by multicellular organisms have the same expression potential. During the cell differentiation processes, selective gene expression occurs and cells possessing identical genetic information acquire different physiological characteristics and functions. Although majority of gene expression controls are performed at transcription and translation levels, their fine tuning are also performed by alternative processing of messenger RNA (mRNA) precursors, generating different forms of mature mRNAs, depending on cell type<sup>1,2</sup>.

The concept of alternative splicing was proposed for the first time in 1978<sup>3</sup> and this phenomenon explains the discrepancy between the number of genes encoding proteins and the number of the different proteins generated. Alternative splicing of precursor mRNA is a crucial mechanism to expand the complexity of gene expression, and it plays a substantial role in cellular differentiation and organism development. The constitutive splicing is a mechanism of RNA processing in which intragenic regions (introns) are removed and expressed regions (exons) are joined to form a mature RNA. Alternative splicing is a deviation from this preferred sequence where certain exons are skipped resulting in various forms of mature mRNA<sup>4</sup>. This important form of gene regulation contributes to the control of gene expression and increase the protein diversity<sup>2,5,6</sup>. In human genome, it is estimated that the proportion of genes that undergo alternative splicing reach to more than 95%<sup>7-9</sup>.

*Dead end* gene (*dnd*), first identified in zebrafish<sup>10</sup>, is a germ plasm component and encodes an RNA-binding protein crucial for the migration and survival of primordial germ cells (PGCs). In *dnd* depleted zebrafish embryos, the PGCs fail to acquire motility, lose specific marker gene expression and die within 24 hours post-fertilization<sup>10</sup> (Weidinger et al., 2003). *Dead end* has been shown to bind to the 3'-untranslated region (UTR) of mRNAs to displace micro-RNAs (miRNAs) that bind to adjacent sites on the same mRNA<sup>11</sup>. This protein is localized to perinuclear germ granules within PGCs, and several knockdown studies have confirmed the importance of *dnd* for the adequate development of the germ cells in teleost fish<sup>10,12-16</sup>. By *in situ* hybridization (ISH) with an antisense RNA probe, the *dnd* expression pattern in adults of medaka<sup>17</sup> and turbot<sup>18</sup> was found in germ cells at premeiotic and meiotic stages of

both sexes. In Pacific bluefin tuna, the localization of BFT*dnd* mRNA is restricted to type A spermatogonia, and not detected in other differentiated spermatogenic cells<sup>19</sup>. The use of the *dead end* gene as a germ cell marker has been increasingly recurrent in studies involving transplantation of germ cells. The production of chimeric teleosts through cell transplantation was developed in 1992<sup>20</sup> (Lin et al., 1992) and in 1994, this technology was used in mammals<sup>21,22</sup>, becoming a valuable approach to the study of germ cell biology as well as research in the field of animal production, cell culture, reproductive medicine and production of transgenic animals<sup>23-26</sup>. The transplantation is also expected to be used as an alternative to preserve genetic resources of important fish species, such as *Collossoma macropomum*, the second largest finfish from the Amazon and Orinoco River basins in northern South America. Popularly known as tambaqui, this species is the second largest scaled fish in South America and it is among the most cultivated Neotropical fish species in fish farms<sup>27</sup>. Currently, only 1% of the animals in the natural environment has the size allowed for fishing (55 cm), showing that the species exploitation is above the maximum sustainable yield<sup>28</sup>.

In order to develop a specific molecular marker for further identification of the germ cells, the tambaqui homolog of *dnd* was isolated, and expression patterns in tambaqui were examined in the gonads at different stages of development. In addition, we identified three transcripts of *dnd* in tambaqui and proposed that alternative splicing in this gene might interfere with protein function.

## Results

### Cloning of the *dead end* cDNA and phylogenetic analysis

The full length of *tdnd* (GenBank no. KY426013) has an open reading frame of 1194 bp that begins with the start codon ATG at the position 79, and the stop codon TAA at the position 1272. The amino acid sequence was inferred to encode 398 amino acid residues, and the sequence alignment with other species indicates that the *dead end* gene is highly conserved through the process of vertebrate evolution (Table 1; Fig.1). The predicted amino acid sequence has three RNA recognition motifs (RRM), RRM1 (AA 52–129), RRM2 (AA 131–211) and double-stranded RNA recognition motif (DSRM) (AA 314–394). RRM1 is the most conserved among the three domains, while DSRM is the least conserved domain. Phylogenetic analysis comparing the full-length cDNA of

tDnd with those of related proteins from other species revealed that tDnd sequence obtained in this study belongs to the clade of Dnd (Fig. 2).

Table 1. The identities of tDnd to other *dead end* proteins.

<b>Species</b>	<b>Identity</b>	<b>Species</b>	<b>Identity</b>
<i>Pygocentrus nattereri</i>	84%	<i>Danio rerio</i>	53%
<i>Astyanax mexicanus</i>	70%	<i>Oncorhynchus mykiss</i>	48%
<i>Ictalurus punctatus</i>	59%	<i>Salmo salar</i>	48%
<i>Carassius auratus</i>	57%	<i>Thunnus orientalis</i>	47%
<i>Sinocyclocheilus grahami</i>	56%	<i>Oryzias latipes</i>	46%
<i>Cyprinus carpio</i>	56%		

Colossoma macropomum	MEAE-----ELLQ-----	20	40	60	-----VLSPQSLRALEEWRRESVTLTQVNSQRRYGGPPPP	43	
Pygoentrus nattereri	MEAE-----ELLQ-----				-----VLNPSQLRALEEWRRESVALTQVNGQRRYGGPPPD	43	
Astyanax mexicanus	MEG-----VVVQ-----				-----VNLPLRVRALEEWLKTTSTLTQINGQRKYGGPPPD	43	
Ictalurus punctatus	MELKRERERERKFLKPFYQTLVLLQLVLSVQKLEPVMFKV				LNPQRQKSLKWLKETTMTLTQVNGQRRYGGPPPLG	74	
Carassius auratus	MEG-----QQLQQ-----				-----VLNPLRQLKSLQEWQKSSVTLTQVNGQRRYGGPPV	44	
Sinocyclocheilus grahami	MEG-----QQLQQ-----				-----VLNPLRQLKSLQEWQKSSITLTQVNGQRRYGGPPV	44	
Cyprinus carpio	MEG-----QQLQQ-----				-----VLNPLRQLKSLQEWQKSSITLTQVNGQRRYGGPPV	44	
Danio rerio	MVGDMDAQQELQQ-----				-----ILNPLRQLKSLQEWQKSSITLTQVNGQRRYGGPPV	50	
Oncorhynchus mykiss	M-EERSSQ-----				-----VLNPLRQLKSLQEWQKSSITLTQVNGQRRYGGPPD	43	
Salmo salar	M-EERSSQ-----				-----VLNPLRQLKSLQEWQKSSITLTQVNGQRRYGGPPD	43	
Thunnus maccoyii	MMENKRNQ-----				-----VNLPLRQLKSLQEWQKSSITLTQVNGQRRYGGPPV	44	
Oryzias latipes	M--DNQSK-----				-----VNLPLRQLKSLQEWQKSSITLTQVNGQRRYGGPPV	42	
<b>RRM 1</b>							
Colossoma macropomum	WSGPVPGSGCEVFISQIPRDVDFEDCLIPLFQSIAPLYEFLRMMN	80	100	120	FSGQNRGFAYAKYGDPAATAAAAIQALNQYP	117	
Pygoentrus nattereri	WRGPVPGAGCEVFISQIPRDVDFEDCLIPLFQSIAPLYEFLRMMN				FSGQNRGFAYAKYGDPAATAAAIHALNKYP	117	
Astyanax mexicanus	WRGPHPGPGCEVFISQIPRDVDFEDCLIPLFQSIAPLYEFLRMMN				FSGQNRGFAYAKYGDPAATAAAIQLTNHYQ	117	
Ictalurus punctatus	WTGPTPGPGCEVFISQIPRDVDFEDCLIPLFQSIAPLYEFLRMMN				FSGQNRGFAYAKYGDPAATAAAIIRALNLYP	148	
Carassius auratus	WQGPAPGPGCEVFISQIPCDVYEDHLIPLFQSIGTYEFLRMMN				FSGQNRGFAYAKYGDPAATAAAVMTLHHYR	118	
Sinocyclocheilus grahami	WQGPAPGPGCEVFISQIPRDIYEDHLIPLFQSIGTYEFLRMMN				FSGQNRGFAYAKYGDPAATAAAVMTLHHYR	118	
Cyprinus carpio	WQGPAPGPGCEVFISQIPCDVYEDHLIPLFQSIGTYEFLRMMN				FSGQNRGFAYAKYGDPAATAAAVMTLHHYR	118	
Danio rerio	WQGPAPGSGCEVFISQIPNDVYEDHLIPLFQSIGTYEFLRMMN				FSGQNRGFAYAKYGDPAATAAAVMTLHHYR	124	
Oncorhynchus mykiss	WLGAAPPGPGCEVFISQIPRDVDFEDCLIPLFQSIGTYEFLRMMN				FSGQNRGFAYAKYGDPAATAAAIRSLHGRA	117	
Salmo salar	WLGAAPPGPGCEVFISQIPRDVDFEDCLIPLFQSIGTYEFLRMMN				FSGQNRGFAYAKYGDPAATAAAIRSLHGRA	117	
Thunnus maccoyii	WTGPTPGARCEVFISQIPRDVDFEDCLIPLFQSIGTYEFLRMMN				FSGQNRGFAYAKYGDPAATAAAIRMLHGHM	118	
Oryzias latipes	WDGPPPGARCEVFISQIPRDVDFEDCLIPLFSSVGLWELRMMN				FSGQNRGFAYAKYGDPAATAAAIHLHGYP	116	
<b>RRM 1</b> <b>RRM 2</b>							
Colossoma macropomum	PQEGVRLVVRKSEKRLQCLGDLPSMGREELLMVLRLLS	160	180	200	EGVEGVTVKAVGSKGKDVCAALVHYSHYAASMAK	191	
Pygoentrus nattereri	LQEGVRLVVRKSEKRLQCLGDLPSMGREELLMVLRLLS				DGVEDIIMKAVGSRGEDTCALVHYSHYAASMAK	191	
Astyanax mexicanus	LQEGVRLVVRKSEKRLQCLGDLPSMGREELLMVLRLLS				DGVEDIIMKAVGSRGEDTCALVHYSHYAASMAK	191	
Ictalurus punctatus	LQSGVRLTVRRSEKRLQCLSDLPTMERNDLLTVLRQI				ADGVEGVNIRTTGPKEDKSLVHYSHYAASMAK	222	
Carassius auratus	LPEGGCLTVRKSEKRLQRLGDLPTSTNQGELLTVLRMI				SDGVEEVLKMGAPKGEVVALVHYSHYAASMAK	192	
Sinocyclocheilus grahami	LPEGGCLTVRKSEKRLQRLGDLPTSTNQGELLTVLRMI				SDGVEEVLKMGAPKGEVVALVHYSHYAASMAK	192	
Cyprinus carpio	LPEGGCLTVRKSEKRLQRLGDLPTSTNQGELLTVLRMI				SDGVEEVLKMGAPKGEVVALVHYSHYAASMAK	192	
Danio rerio	LPEGGCLTVRKSEKRLQRLGDLPTSTNQGELLTVLRMI				SDGVEEVLKMGAPKGEVVALVHYSHYAASMAK	192	
Oncorhynchus mykiss	LESGARLSVRRSEKRLQCLGELPTSTRREKLLQVLD				EGVEGVSLR-AGPREQGLS AVVVYASHHAASMAK	190	
Salmo salar	LESGARLSVRRSEKRLQCLGELPTSTRREKLLQVLD				EGVEGVSLR-AGPREQGLS AVVVYASHHAASMAK	190	
Thunnus maccoyii	LEPGARLSVRRSEKRLQCLGELPTSTRREKLLQVLD				EGVEGVSLR-AGPREQGLS AVVVYASHHAASMAK	191	
Oryzias latipes	LPGARLSVRRSEKRLQCLGELPTSTRREKLLQVLD				EGVEGVSLR-AGPREQGLS AVVVYASHHAASMAK	189	
<b>RRM 2</b>							
Colossoma macropomum	KVLVQDFKKRFGVSI SVRWMP	240	260	280	DSSKFRQGEHAEISLAPPGLKHLAKLSAPP	264	
Pygoentrus nattereri	KVLVQDFKKRFGVSI SVRWMP				DSSKFRQGEHAEISLAPPGLKHLAKLSAPP	264	
Astyanax mexicanus	KVLVQDFKKRFGVSI SVRWMP				DSSKFRQGEHAEISLAPPGLKHLAKLSAPP	264	
Ictalurus punctatus	KVLVQDFKKRFGVSI SVRWMP				DSSKFRQGEHAEISLAPPGLKHLAKLSAPP	264	
Carassius auratus	KVLVQDFKKRFGVSI SVRWMP				DSSKFRQGEHAEISLAPPGLKHLAKLSAPP	264	
Sinocyclocheilus grahami	KVLVQDFKKRFGVSI SVRWMP				DSSKFRQGEHAEISLAPPGLKHLAKLSAPP	264	
Cyprinus carpio	KVLVQDFKKRFGVSI SVRWMP				DSSKFRQGEHAEISLAPPGLKHLAKLSAPP	264	
Danio rerio	KVLVQDFKKRFGVSI SVRWMP				DSSKFRQGEHAEISLAPPGLKHLAKLSAPP	264	
Oncorhynchus mykiss	KVLVQDFKKRFGVSI SVRWMP				DSSKFRQGEHAEISLAPPGLKHLAKLSAPP	264	
Salmo salar	KVLVQDFKKRFGVSI SVRWMP				DSSKFRQGEHAEISLAPPGLKHLAKLSAPP	264	
Thunnus maccoyii	KVLVQDFKKRFGVSI SVRWMP				DSSKFRQGEHAEISLAPPGLKHLAKLSAPP	264	
Oryzias latipes	KVLVQDFKKRFGVSI SVRWMP				DSSKFRQGEHAEISLAPPGLKHLAKLSAPP	264	
Colossoma macropomum	LPSPPLPPPAAPP-----	300	320	340	SPPPPPTQGSRAVGGPA-PHV RNMV P-----	303	
Pygoentrus nattereri	SLRPPPPPSLSPNALSPPPQYKQFPQAVGSPG-PQVRNGMAP-----				-----	296	
Astyanax mexicanus	SLRPPPPPSLSPNALSPPPQYKQFPQAVGSPG-PQVRNGMAP-----				-----	308	
Ictalurus punctatus	-----RPPPLPPT-----				PSPLQPPVFPREYGGPTL-QVTNVMPLKSSSVEEPL-----	328	
Carassius auratus	-----PQPLLHDV-----				PAHSPIQPFRAVGGP-ASLRDEMM-----	280	
Sinocyclocheilus grahami	-----PQPLLHDV-----				PSHPLIQPFRAVGGP-AGLRDEMM-----	281	
Cyprinus carpio	-----PQPLLHDV-----				SAHPVQPFRAVGGP-AGRDETM-----	280	
Danio rerio	-----YDV-----				PAHQSLPLFRVAGGPTSEQRDEMIQPPTIMSRNELIPQSSIQRDEMVQLPIR	310	
Oncorhynchus mykiss	HCSSLDSPR-----				PPLRLAQRQLP-AFSRAVRAPPMMVA-----	281	
Salmo salar	RCSSLDSPR-----				PPLHLAQRQLP-AFSRAVRAPPMMVA-----	283	
Thunnus maccoyii	RHILNSPQP SVLPPRLIRPP SMPPGFCRAVGGPT-----				-----APQHPH-----PHPP	280	
Oryzias latipes	-HLGQTS PR-----				LPPRLASP-AVPTAFCKAVGGPP-----	277	
<b>DSRM</b>							
Colossoma macropomum	-----LITRRPDLMS	380	400	420	440	HDSVVQLQWLCELHGLGVLVYVRYHHTSPDGLHFNYRVIIPRLPVPVLSGVVQILPGIS	373
Pygoentrus nattereri	-----FVTRRPDLRS					HDSVQQLRWLCELHNLGVLVYVRYHHTSPDGLHFNYRVIIPRLPVPVLSGVVQILPGIS	366
Astyanax mexicanus	-----VTAVRPPLSS					HDAVSQKWLCELYGIVPLVYVRYHHTSPDGLHFNYRVIIPQLPIPLCGSVQVLPGPS	378
Ictalurus punctatus	-----PQAP-VN					HDSVHELHWLCELHGLGELPLNMYDHTGPDGLYFAVRVMVPLDMPFCGGVHVLPSTC	388
Carassius auratus	-----PRAP-VN					QDAVSQQLQWICELHRLGTQYEVRFHRTSSDGLYFNFKVLVPLGFLPLNGVIEIILPGTS	346
Sinocyclocheilus grahami	-----PQAP-VN					HDAVSQQLQWICELHRLGTQYEVRFHRTSSDGLYFNFKVLVPLGFLPLNGVIEIILPGTS	347
Cyprinus carpio	-----PQAP-VN					HDAVSQQLQWICELHRLGTQYEVRFHRTSSDGLYFNFKVLVPLGFLPLNGVIEIILPGTS	346
Danio rerio	PRDGMAPQS P-----					LDAYSHLQWMCVYVRLGSPQYEVFHHAA PDGLYFAFKVLIPGLPLPFGVQVILPGTS	382
Oncorhynchus mykiss	-----VDAALLQGVCEYVGGQKPLVDLQYRHMGP					PDGLYFAFKVLIPGLPLPFGVQVILPGTS	341
Salmo salar	-----VDAALLQGVCEYVGGQKPLVDLQYRHMGP					PDGLYFAFKVLIPGLPLPFGVQVILPGTS	343
Thunnus maccoyii	CSSTYQEHLS SAFS					GSVPMVLHKMCEATGVQPLVEIYYSHTGPDGLYFAFKVLIPGLPLPFGVQVILPGPT	354
Oryzias latipes	PRGQVM-----FSS					VS PVLLLRLKLEASGWDPDHYEMLF SHAGPDGLYFAFKVLIPGLPLPFGVQVILPGHC	345
<b>DSRM</b>							
Colossoma macropomum	ANTMEDEVHRAVAEQAIKVMC-----	400	420	440	HKY	397	
Pygoentrus nattereri	TNIMEDEVHRAVAEQAIKVMC-----				HQR	390	
Astyanax mexicanus	ISSMEEVQRATAEQVIKVMC-----				QQS	402	
Ictalurus punctatus	ANNMKA EVQRAAAKQLLEAIWQA-----				RNH	414	
Carassius auratus	IQAMKAEVYRAAAEQVIQTMCKVSNLRPF					375	
Sinocyclocheilus grahami	IQAMKAEVYRAAAEQVIQTMCKVSNLRPF					376	
Cyprinus carpio	IQAMKAEVYRAAAEQVIQTMCKVSNLRPF					375	
Danio rerio	ARAMKAEVYRAAAEQVIQTLRVSNLRPF					411	
Oncorhynchus mykiss	PGAIQEARRATAQQVLSALYR-----				A	364	
Salmo salar	PGAIQEARRATAQQVLSALYR-----				A	366	
Thunnus maccoyii	ATNMLEEAQAAAAQVLSVYV-----				KQFSH	381	
Oryzias latipes	TSTMLEEARAAQQVLSALYR-----				SGLSA	372	

Fig.1. Multialignment of selected *dnd* homologs. The RRM are shown in the frame, including RRM1, RRM2 and DSRM.

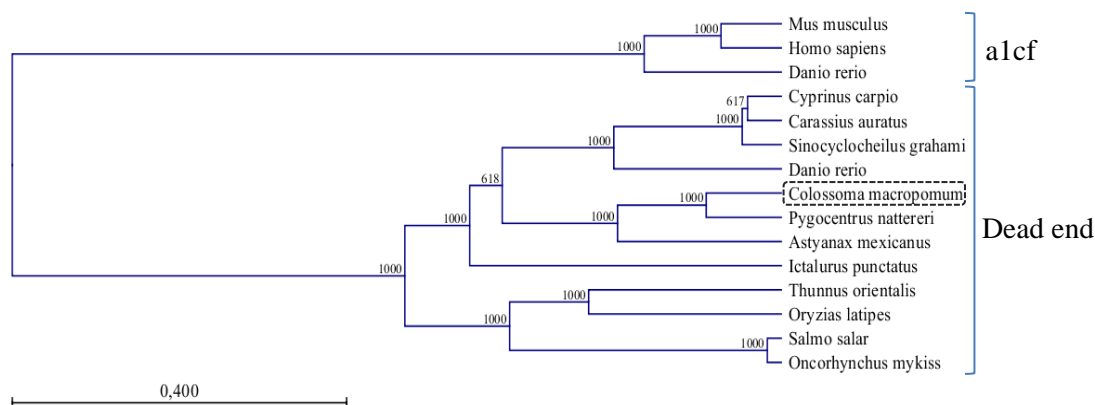


Fig. 2. UPGMA tree for the dead end and its related protein, a1cf family, based on dead end homologues of *C. carpio* (XP\_018958879.1), *C. auratus* (AEX33122.1), *S. grahami* (XP\_016098544.1), *D. rerio* (NP\_997960.1), *C. macropomum* type 1 (AQY10189), type 2 (AST51843.1), type 3 (AST51844.1), *P. nattereri* (XP\_017578011.1), *A. mexicanus* (XP\_007253662.1), *I. punctatus* (XP\_017340221.1), *T. orientalis* (KF128758.1), *O. latipes* (NP\_001157988.1), *O. mykiss* (CDQ77433.1), *S. salar* (NP\_001266060.1), and the apobec-1 factor of *H. sapiens* (NP\_620311.1), *M. musculus* (NP\_001074543.1) and *D. rerio* (XP\_009304711.1).

### Genomic DNA sequence of *tdnd*

The genomic DNA sequence of *tdnd* was analyzed to verify the spliced site of the transcript found in this study. After the genomic DNA sequence analyses and alignment with other species, we noticed that an exon of *tdnd* corresponding to exon 4 of all other known *dnd* homologues split into 2 exons and new intron was inserted (Fig. 3, exon 4' and 4''). Alignment of *dnd* locus of various vertebrates were shown in Fig. 3 and revealed that among these species, only tambaqui has segmentalized exon 4.



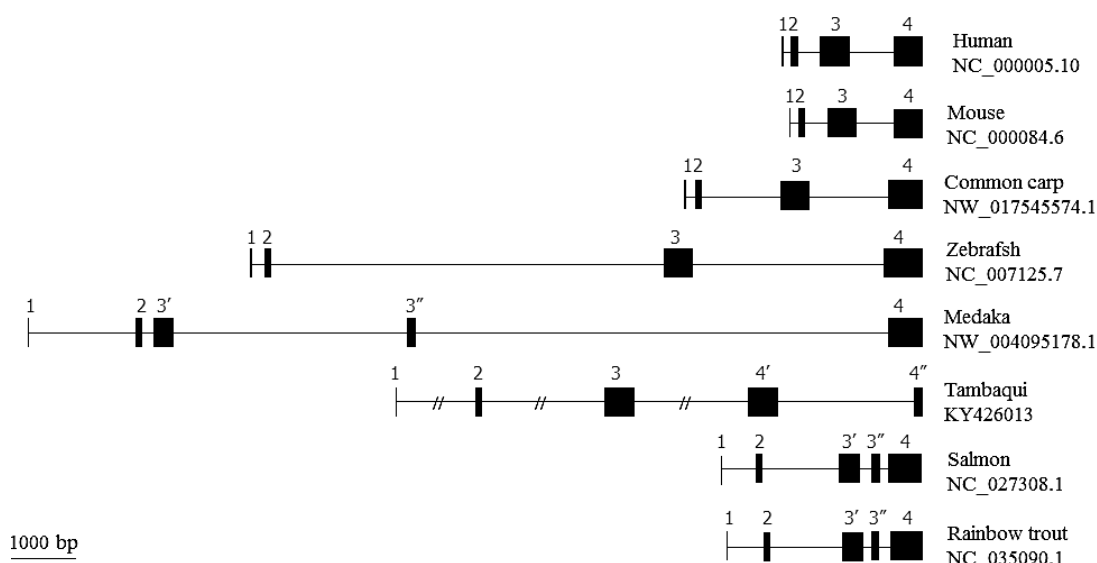


Fig. 3. Schematic drawing of exon-intron structure of various vertebrates. Predicted exons are shown in black box and introns in thin line.

Gel electrophoresis of RT-PCR products showed fragments of different lengths of *tdnd* (Fig.4a). Further, the sequencing of each fragment revealed that the *tdnd* gene has three transcripts, since smaller two fragments had nearly identical length and could not be distinguished on the electrophoretic pattern. The alignment of the obtained sequences showed that type 1 represents the complete sequence of the *tdnd* gene, while type 2 does not contain exon 3 (aa 43 to 196), and type 3 has a missing part of exon 4 and 5 (aa 209 to 366). The amino acid alignment of the three types of transcripts shows the limit of each exon (red arrow), and the missing sequences in the types 2 and 3 (Fig.4b).



alignment of the three transcripts. The red arrows delimit each exon, with the donor and acceptor site underlined.

To determine tissue distribution profile of each transcript, primers specific to each transcript were designed to distinguish them (Fig. 5a). The results show that all transcripts were detectable only in testes and ovaries of tambaqui (Fig. 5b), and no expression was detected in other tissues including heart, brain, gill, liver, muscle, kidney, intestine and stomach.

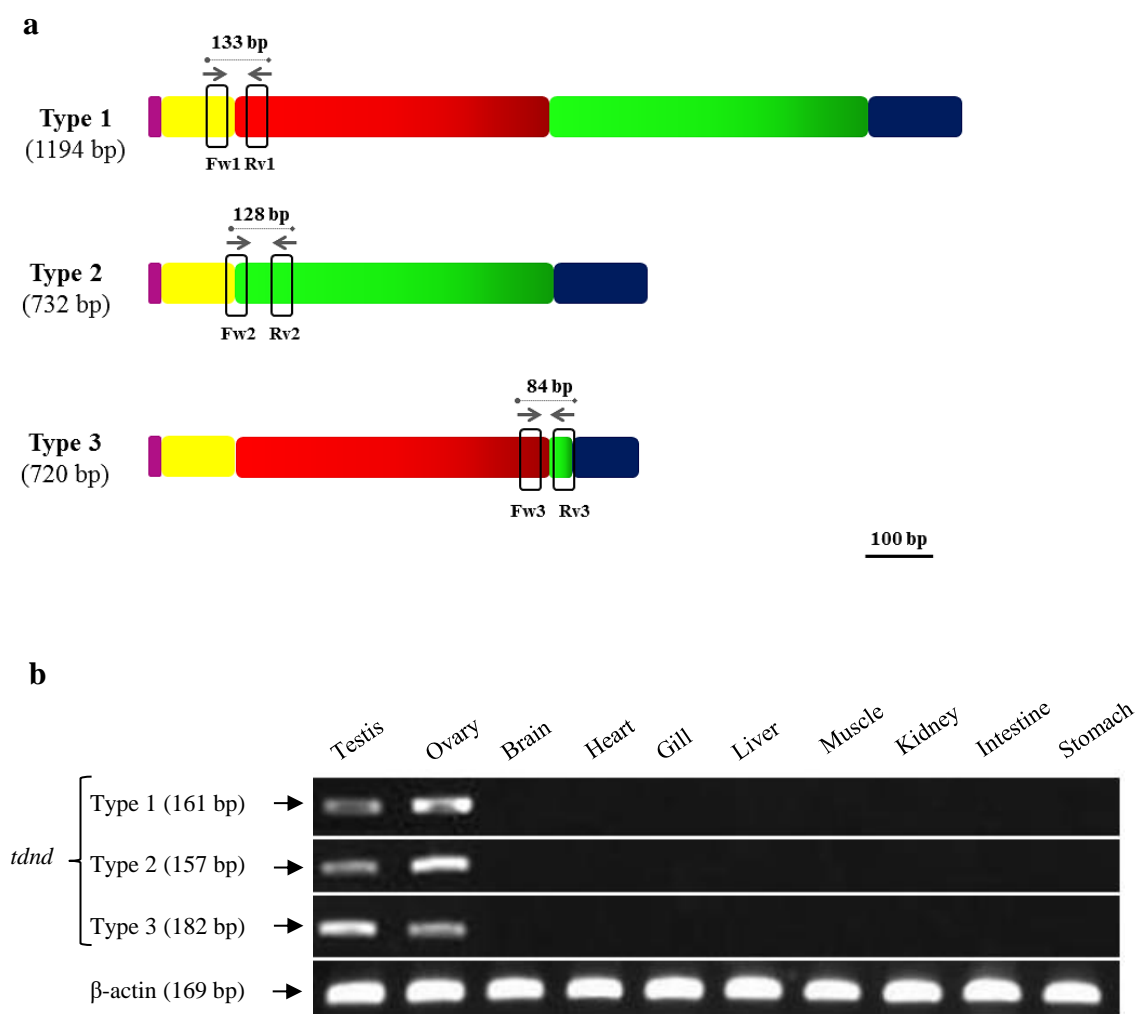


Fig. 5. (a) Schematic drawing of the position and length of each specific primer. The different colors represent each exon in the gene. (b) Expression of *dnd* transcripts in various tissues of tambaqui.

### Quantitative PCR

The quantitative analysis with testes and ovaries of different aged animals showed that the three transcripts presented distinctive profiles of expression, although the relative quantification has shown a wave behavior (Fig. 6). Expression profile of the full-length transcript (Type 1) showed distinctive tendency to those of short transcripts (Type 2 and 3), including the alternative splicing variant (Type 2). On the other hand, those of Type 2 and Type 3 were quite similar, though their absolute values varied.

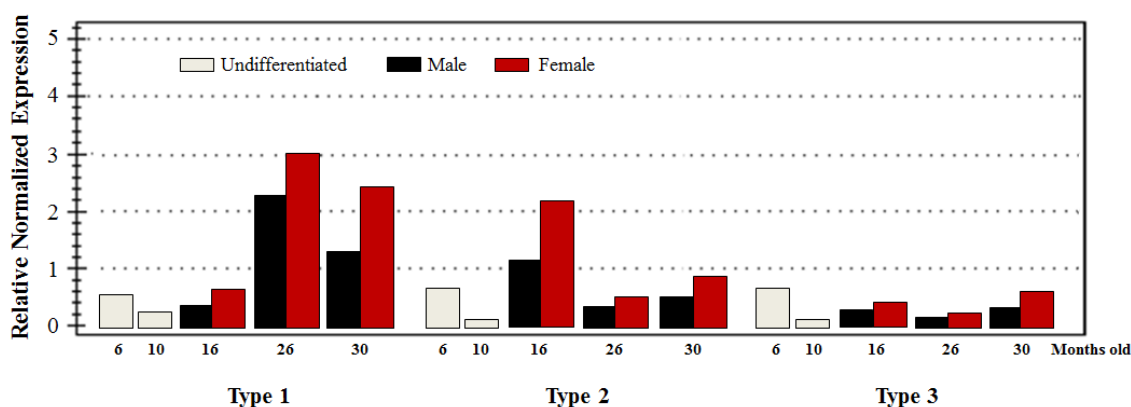


Fig. 6. Relative normalized expression of the *dead end* gene transcripts at different ages of tambaqui.

### Specific expression of *tdnd*

Further investigation of *tdnd* mRNA localization of tambaqui was conducted by *in situ* hybridization with Type 1 *dnd* probes on serial sections of tambaqui gonads. In ovarian section, peri-nuclear stage oocytes showed clear positive signals. Further weak signals were detected also in immature spermatogonia (Fig. 7).

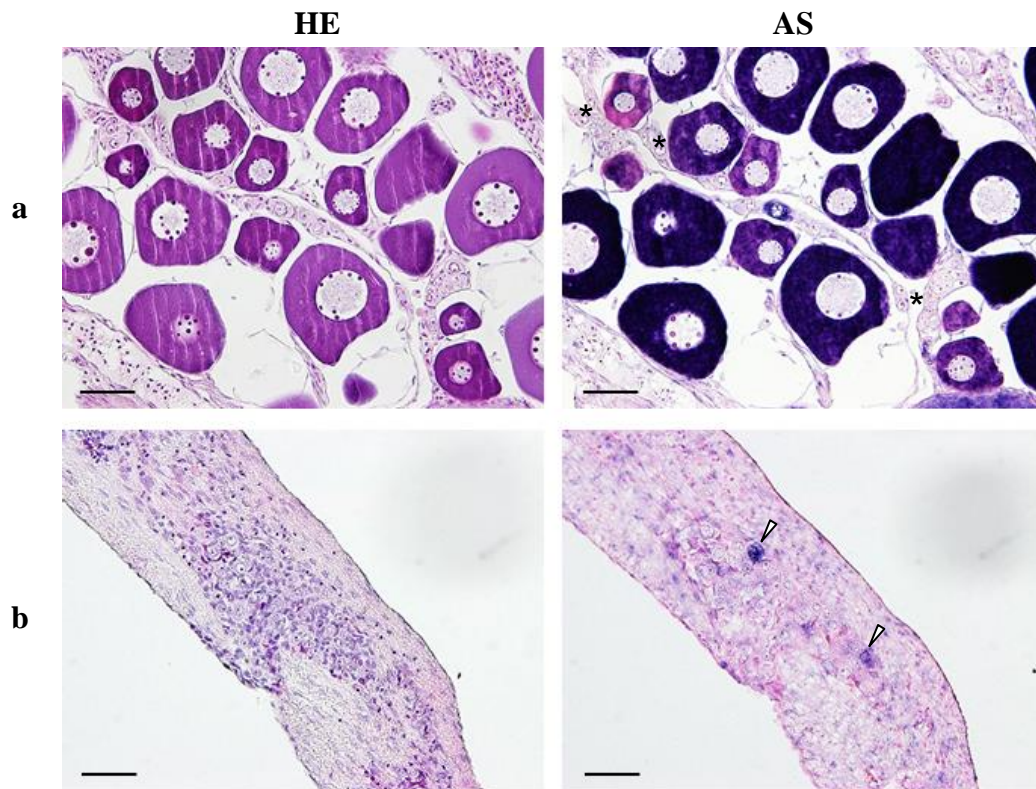


Fig. 7. *In situ* hybridization (ISH) analysis of *dead end* type 1 in gonad sections of *Colossoma macropomum*. (a) Strong expression of *tdnd* gene detected in pre-vitellogenic oocytes and no signal in oogonia (asterisk). (b) Testicular expression of *tdnd* gene showing weak signal in some spermatogonia (white arrow). HE: hematoxylin-eosin staining; AS: antisense probe. Scale bar = 50  $\mu$ m.

## Discussion

Here we identified and characterized the *dead end* cDNA as a candidate for germ cell marker of tambaqui. Additionally, we found three transcripts of the gene being expressed in the gonads of male and female. The amino acid sequence deduced from the full-length cDNA showed 98% similarity and 53% identity with the zebrafish *dead end*, which has been functionally analyzed by gene knock down techniques<sup>10</sup> and *in vitro* intermolecular interaction analyses<sup>29</sup>. The phylogenetic tree analysis of the *dead end*-related proteins revealed that the clone isolated in this study belongs to the branch of *dead end* homologues. Furthermore, the deduced amino acid sequence contained two single-strand RNA recognition motifs (RRM) and one double strand RNA binding domain (DSRM), which are typical characteristics of the *dead end* family. These three

conserved domains are found in the all known *dnd* proteins, including red piranha (GenBank no. XM\_017722544.1), Mexican tetra (XM\_007253600.3), goldfish (JN578697.1), Golden-line barbell (XM\_016243058.1), common carp (XM\_019103334.1), zebrafish (AY225448.1), rainbow trout (DQ974158.1), southern Bluefin tuna (KP171240.1), Atlantic salmon (JN712911.1 ) and medaka (NM\_001164516.1), *Xenopus* (AAX84947.1 ) and mouse (NP\_775559.2). Furthermore, *tdnd* were specifically and strongly expressed in oocytes, suggesting that *tdnd* is a germ-line gene and works as maternally inherited factor. Thus, the results from the sequence homology, phylogenic tree analyses, and domain structure, together with its specific expression in germ cell lineage fulfills the requirements of a *dnd* homolog, at least from a structural and expression point of view.

By sequence alignment of cDNA and gene of *tdnd*, we could reveal that *tdnd* is composed of 5 exons, instead of 4, which are typically observed in the most of the vertebrates, such as human (NC\_000005.10), mouse (NC\_000084.6) and zebrafish (NC\_007125.7). By comparing *dnd* exon-intron structure of these species, we found that exon 4 of above-listed species was segmentalized into two exons, producing 5 exons collectively in tambaqui. The intron inserted between exon 4 and 5 of *tdnd* has typical splice donor site G-G-[cut]-G-U-R-A-G-U and splice acceptor site Y-rich-N-C-A-G-[cut]-G, in addition to the branch sequence (Y-U-R-A-C), which is located 20-50 nucleotides upstream of acceptor site (Genbank no. MG879029). When the exon-intron structure is analyzed in various teleosts, it is possible to observe that *dnd* of cyprinid fish have four exons, while other species, including *tdnd* present five exons. The position of additional introns suggests that the intron insertion process occur independently in *tdnd* from those of salmonids and medaka, since tambaqui has additional intron in the exon 4 and salmonids and medaka has it in the exon 3. At this moment, we cannot discuss about evolutionary processes of these events since exon-intron structure information is still scarce in teleosts.

In this study, three types of transcripts were identified from *tdnd*. Even though the alternative splicing occurs with high frequency in the pre-mRNA composed of more than one exon, here, we report for the first time the occurrence of alternative splicing in the *dead end* gene, which generated at least one additional isoform with different expression profile. Although the recognition of each exon and intron in tambaqui

showed that type 2 was generated from the alternative splicing of the third exon, the truncated isoform 3 showed a different pattern of splicing compared to those documented so far. Although we could not figure out the mechanisms how the truncated isoform 3 was produced in this study, it will be important task in future studies.

It is known that alternative splicing is one of the main sources of proteomic diversity in multicellular eukaryotes, by which mRNAs with different functions can be synthesized from a single gene, although not all alternatively spliced transcripts produce functional proteins. In addition to being a mechanism for proteomic expansion, alternative splicing appears to modulate a function of the gene by adding or removing protein domains, affecting a protein activity or by altering a transcriptional stability or a resulting protein<sup>30-32</sup>. This process involves the differential use of splice sites to create distinct proteins and our results showed that isoforms 2 and 3 of the *dead end* gene were generated by different splice sites. The third exon of the type 2 isoform is completely replaced by an intron, being classified as "Exon skipping"<sup>8</sup>, and this loss caused the complete exclusion of the RRM1 and the loss of 62 amino acids of RRM2, which represents almost 80% of its composition. In the type 3 transcript, 9% (7 amino acids) of RRM2 and 64% (51 amino acids) of the DSRM was excluded from mature mRNA during transcription. Although it has been reported that some RNA binding proteins may lose the RRM and keep the function through other well-conserved and structurally important residues<sup>33</sup>, the loss of the RRM in the transcripts 2 and 3 may inactivate the protein, since the domains play a crucial role for the *dnd* function and could be involved in targeting the protein to its normal location in the cell<sup>34</sup>.

The alternative splicing in *tdnd* may be related to the down regulation of the gene function<sup>35-41</sup>, such as dominant-negative inhibition, since the absence of the above-mentioned motifs, that is important for their function, may impair the recognition of the molecule, causing the loss of the protective function of the *dead end* against the miRNA, which acts as post-transcriptional silencers. This function of protection is given by the fact that *dead end* interacts with the mRNA molecule by neutralizing the function of several miRNAs in the PGCs, by similarity, preventing them from associating with their target sites<sup>11</sup>. Furthermore, in most samples analyzed, we could observe that the relative expression of isoform 1 is inversely proportional to the relative expressions of the splicing variants 2 and 3. This behavior leads us to propose that the production of

the alternative forms of the *dead end* transcripts in tambaqui is regulated differently from the production mechanism of the full-length transcript (type 1).

In any case, specific expression of all three variants in gonads may suggest their importance in germ cell development. Further precise analyses will be needed to conclude the specific expression of each variant in the lineage of germ cells, since we could not detect each variant by using the RNA probe in *in situ* hybridization study. In captivity, tambaqui reaches the sexual maturity after 3 years old but in the histology, it is possible to see oocytes and sperm around 12 months old. The increase in the expression of isoform 1 as the individual reaches sexual maturity was expected, since self-renewal and duplication of germ stem cells in seasonal reproduction species are more present before and after spawning or spermiation.

Although some animals are physiologically prepared to reproduce, the absence of abiotic factors may cause the regression of mature cells and this phenomenon can explain the low relative expression of the variant 1 at the age of 16 months (Vasconcelos et al., Unpublished results).

More comprehensive studies using wider range of target species are required to fully understand this phenomenon that is critically important for production of variety of proteins using limited size of their genomes. The maintenance of the three isoforms of the *tdnd* may suggest their biological significance in this species, although more precise studies will be needed to conclude.

## **Methods**

### **RNA isolation**

Fragments of ovary, testis, heart, brain, gill, liver, muscle, kidney, intestine and stomach were collected from 6, 10, 16, 26 and 30 months-old tambaqui, *Colossoma macropomum*. The animals were dissected after deep anesthetization followed by immediate decapitation. Total RNA was extracted from the ovaries and testis of tambaqui using a QuickPrep Total RNA Extraction Kit (Amersham Pharmacia Biotech). The quality of the isolated RNA was examined by spectrophotometer and denaturing gel electrophoresis.



### Reverse Transcription–Polymerase Chain Reaction (RT-PCR)

Three micrograms of total RNA were used for cDNA synthesis. First strand cDNA was synthesized by means of Ready-To-Go You-Prime First-Strand Beads (Amersham Pharmacia Biotech) with the adapter-oligo dT primer (5'-CTGATCTAGAGGTACCGG ATCC-oligo dT- 3'). RT-PCR was performed with degenerate primers (*dnd*-Fw1 and *dnd*-Rv1) that were designed using the highly conserved regions of *dnd* homologs from various fish species. The PCR reaction was carried out using 1 µl of cDNA products, 0.8 µl of dNTP, 1 µl of each primer (10 µM), 1 µl of 10x ExTaq buffer (Takara Biomedicals) and 0.25 units of ExTaq enzyme (Takara Biomedicals) in a total volume of 10 µl. Amplification was performed with an initial denaturation step of 5 min at 94°C followed by 35 cycles as follows: denaturation for 30 s at 94°C, annealing for 30 s at 63.9°C and extension for 1 min at 72°C. The final extension was performed for 3 minutes at 72°C. PCR products were electrophoresed on a 0.7% agarose gel and the DNA fragment that showed the predicted molecular weight was isolated using a Gelpure DNA Purification Kit (Gene Mate). Amplified cDNA fragments were cloned into the pGEM T-Easy Vector (Promega) and sequenced. All primers are shown below.

Table 1. Description of the primers used

Purpose	Gene	Primer name	Sequence
Cloning	<i>tdnd</i>	<i>tdnd</i> -deg-Fw-1	5'- GGSTGTGAGGTTTTTCATCAGTCAG
		<i>tdnd</i> -deg-Rv-1	5'- CACAWGGTTTGGATCACCTGCTCA
5'RACE	<i>tdnd</i>	<i>tdnd</i> -5RACE-1	5'-GTCGAAGTTCATCATGAGGGCGAAACTCATACAA
		<i>tdnd</i> -5RACE-2	5'- ACTCATAACAACGGCGCAATGCTCTGGAAGA
3'RACE	<i>tdnd</i>	<i>tdnd</i> -3RACE-1	5'- GATGGTACCCTGATCACCCAGAAGGCCTGA
		<i>tdnd</i> -3RACE-2	5'- GAAGGCCTGATTTGATGTCCCATGATTCACT
RT-PCR	<i>tdnd</i>	<i>tdnd</i> -total-Fw	5'- ATGGAGGCAGAGTTGTTACAGGTTCTGAG
		<i>tdnd</i> -total-Rv	5'- CTTGTGGCACATGACTTTAATGGCCTGCT
RT-PCR and qPCR	<i>actb</i>	actin-Fw	5'- CGTGATGGACTCTGGTGATG
		actin-Rv	5'- TCACGGACAATTTCCTCTC
		Fw1	5'- CAGGTCAACAGCCAGAGGAG
		Rv1	5'- GGAAGAGCGGGATCAGACAG
Alternative Splicing and qPCR	<i>tdnd</i>	Fw2	5'- AGAGACCCTGTTCTCTCTCC
		Rv2	5'- ACCATCCCGTTCTCTCACATG
		Fw3	5'- CCTCTCACTATGCTGCCTCC
		Rv3	5'- TCTGGACGGAGATGGAAACG
Genomic DNA	<i>tdnd</i>	Genomic-Fw	5'- CTTCAAGAAGCGGTTTGGCGTCTCCATCTCC
		Genomic-Rv	5'- TTGGCGCTGATGCCAGGCAGAATCTGGAC

### **Rapid Amplification of cDNA Ends (RACE)**

To isolate a full-length cDNA, 5' and 3' rapid amplification of cDNA ends (RACE) was performed with a GeneRacer Kit (Life Technologies) according to manufacturer's instructions, using gene-specific primers for 5'RACE (*tdnd*-5'RACE-1 and *tdnd*-5'RACE-2) and 3'RACE (*tdnd*-3'RACE-1 and *tdnd*-3'RACE-2). Amplified RACE products were cloned into the pGEM T-Easy Vector (Promega, Madison) and sequenced. The deduced amino acid sequences of *tdnd* and related molecules from various species obtained from GenBank were used in construction of phylogenetic tree, performed as described previously<sup>41</sup>. Touchdown and Nested PCR were used to reduce background amplification, and increase the specificity and sensibility of RACE products.

### **Histology and *In Situ* Hybridization**

Fragments of tambaqui testes and ovaries were fixed with Bouin's solution, cut into 4 µm-thick sections using standard paraffin-embedding methods, and stained with hematoxylin and eosin. Localization of *tdnd* mRNA was analyzed by *in situ* hybridization on the sections, as previously described<sup>42</sup>. An 1194 base pair (bp) cDNA fragment of *tdnd* was used as a template to synthesize antisense RNA probe.

### **Genomic DNA**

To study the alternative splicing of *tdnd* type 3, the genomic DNA was extracted using Genra Puregene Tissue Kit (QIAGEN) as described in the manufacturer's protocol. Genomic DNA encoding *tdnd* were amplified by PCR using 1 µl of genomic DNA product, 0.8 µl of dNTP, 1 µl of each primer (10 µM), 1 µl of 10x ExTaq buffer (Takara Biomedicals) and 0.25 units of ExTaq enzyme (Takara Biomedicals) in a total volume of 10 µl. Amplification was performed with an initial denaturation step of 5 min at 94°C followed by 35 cycles as follows: denaturation for 30 s at 94°C, annealing for 30 s at 66°C and extension for 1 min at 72°C. The final extension was performed for 3 minutes at 72°C. PCR products were electrophoresed on a 0.7% agarose gel and the DNA fragment that showed the predicted molecular weight was isolated using a Gelpure DNA Purification Kit (Gene Mate). Amplified genomic DNA fragments were cloned

into the pGEM T-Easy Vector (Promega, Madison) and sequenced. The primers used are shown in Table 1.

### Quantitative PCR

To compare the expression profiles of each isoform at different ages of tambaqui, qPCR was performed using the Ssoadvanced universal sybr green supermix kit (Bio-Rad) following the manufacturer's protocol. Quantifications of *tdnd* type 1, type 2 and type 3 were performed by  $\Delta\Delta\text{Ct}$  method with *actb* as an internal control. The qPCR reaction was carried out using 1  $\mu\text{l}$  of cDNA products, 0.2  $\mu\text{l}$  of each primer (10  $\mu\text{M}$ ), 5  $\mu\text{l}$  of ssoadvanced universal SYBR green supermix (2x) and 3.6  $\mu\text{l}$  of nuclease-free  $\text{H}_2\text{O}$ , in a total volume of 10  $\mu\text{l}$ . Amplification was performed with an enzyme activation step for 3 min at 95°C followed by denaturation for 3 s at 95°C and annealing for 20 s at 60°C. The melting curve was added after 40 cycles of amplification.

### References

1. Herbert, A. E. & Rich, A. RNA processing and the evolution of eukaryotes. *Nature Genetics* **21**, 265- 269 (1999).
2. Sharp, P.A. The Centrality of RNA. *Cell* **136**, 577- 580 (2009).
3. Gilbert, W. Why genes in pieces? *Nature* **271**:501 (1978). doi: 10.1038/271501a0v
4. Wang, Y., Liu<sup>1</sup>, J., Huang, B., Xu, Y., Li, J., Huang, L., Lin, J., Zhang, J., Min, Q., Yang, W. & Wang, X. Mechanism of alternative splicing and its regulation (Review). *Biomedical reports* **3**, 152-158 (2015).
5. Liu, C., Bai, B., Skogerbø, G., Cai, L., Deng, W., Zhang, Y., Bu, D., Zhao, Y. & Chen, R. NONCODE: an integrated knowledge database of non-coding RNAs. *Nucleic Acid Research* **33**, D112- D115 (2005).
6. Lareau, L.F., Green, R.E., Bhatnagar, R.S. & Brenner, S.E. The evolving roles of alternative splicing. *Current Opinion in Structural Biology* **14**, 273–282 (2004).

7. Pan, Q., Shai, O., Lee, L.J., Frey, B.J. & Blencowe, B.J. Deep surveying of alternative splicing complexity in the human transcriptome by high-throughput sequencing. *Nature Genetics* **40**, 1413–1415 (2008).
8. Wang, E.T., Sandberg, R., Luo, S., Khrebtkova, I., Zhang, L., Mayr, C., Kingsmore, S. F., Schroth, G.P. & Burge, C.B. Alternative isoform regulation in human tissue transcriptomes. *Nature* **456**, 470–476 (2008).
9. Nilsen, T. W & Graveley, B. R. Expansion of the eukaryotic proteome by alternative splicing. *Nature* **463**, 457–63 (2010).
10. Weidinger, G., Stebler, J., Slanchev, K., Dumstrei, K., Wise, C., Lovell-Badge, R., Thisse, C., Thisse, B. & Raz, E. Dead end, a novel vertebrate germ plasm component, is required for zebrafish primordial germ cell migration and survival. *Current Biology* **13**, 1429–1434 (2003).
11. Kedde, M., Strasser, M. J., Boldajipour, B., Vrielink, J. A., Slanchev, K., Le Sage, C., Nagel, R., Voorhoeve, P. M., Van Duijse, J., Ørom, U. A., Lund, A. H., Perrakis, A., Raz, E. & Agami, R. RNA-Binding Protein Dnd1 Inhibits MicroRNA Access to Target mRNA. *Cell* **131**, 1273–1286 (2007).
12. Slanchev, K., Stebler, J., De La Cueva-Mendez, G. & Raz, E. Development without germ cells: the role of the germ line in zebrafish sex differentiation. *Proceedings of the National Academy of Sciences U S A* **102**, 4074–4079 (2005).
13. Siegfried, K.R. & Nusslein-Volhard, C. Germ line control of female sex determination in zebrafish. *Developmental Biology* **324**, 277–287 (2008).
14. Skugor, A., Tveiten, H., Krasnov, A. & Andersen, O. Knockdown of the germ cell factor Dead end induces multiple transcriptional changes in Atlantic cod (*Gadus morhua*) hatchlings. *Animal Reproduction Science* **144**, 129–137 (2014).

15. Wargelius, A., Leininger, S., Skaftnesmo, K., Kleppe, L., Andersson, E., Lasseteranger, G., Schulz, R. W. & Edvardsen, R. B. Dnd knockout ablates germ cells and demonstrates germ cell independent sex differentiation in Atlantic salmon. *Scientific Reports* **6**: 21284 (2016).
16. Yoshizaki, G., Takashiba, K., Shimamori, S., Fujinuma, K., Shikina, S., Okutsu, T., Kume, S. & Hayashi, M. Production of germ cell-deficient salmonids by dead end gene knockdown, and their use as recipients for germ cell transplantation. *Molecular Reproduction and Development* **83**, 298-311 (2016).
17. Liu, L., Hong, N., Xu, H., Li, M., Yan, Y., Purwanti, Y., Yi, M., Li, Z., Wang, L. & Hong, Y. Medaka dead end encodes a cytoplasmic protein and identifies embryonic and adult germ cells. *Gene Expression Patterns* **9**, 541–548 (2009).
18. Lin, F., Zhao, C., Xu, S., Ma, D., Xiao, Z., Xiao, Y., Xu, C., Liu, Q. & Li, J. Germline-specific and sexually dimorphic expression of a dead end gene homologue in turbot (*Scophthalmus maximus*). *Theriogenology* **80**, 665–672 (2013).
19. Yazawa, R., Takeuchi, Y., Morita, T., Ishida, M. & Yoshizaki, G. The Pacific bluefin tuna (*Thunnus orientalis*) dead end gene is suitable as a specific molecular marker of type A spermatogonia. *Molecular Reproduction and Development* **80**, 871–880 (2013).
20. Lin, S., Long, W., Chen, J., Hopkins, N. Production of germ-line chimeras in zebrafish by cell transplants from genetically pigmented to albino embryos. *Proceedings of the National Academy of Sciences U.S.A.* **89**, 4519-4523 (1992).
21. Brinster, R. L. & Zimmermann, J. W. Spermatogenesis following male germ-cell transplantation. *Proceedings of National Academy of Science of the United States of America* **91**, 11298-302 (1994).

22. Brinster, R. L. & Avarbock, M. R. Germline transmission of donor haplotype following spermatogonial transplantation. *Proceedings of National Academy of Science of the United States of America* **91**, 11303-7 (1994).
23. Mclean, D. Spermatogonial stem cell transplantation and testicular function. *Cell and Tissue Research* **322**, 21-31 (2005).
24. Orwig, K. E. & Schlatt, S. Cryopreservation and transplantation of spermatogonia and testicular tissue preservation of male fertility. *Journal of the National Cancer Institute Monographs* **34**, 51-56 (2005).
25. Hill, J. R. & Dobrinski, I. Male germ cell transplantation in livestock. *Reproduction, Fertility and Development* **18**, 13-18 (2006).
26. Dobrinski, I. Transplantation of germ line stem cells for the study and manipulation of spermatogenesis. *Ernst Schering Research Foundation Workshop* **60**, 75-93 (2006).
27. Barçante, B. & Sousa, A. B. Características zootécnicas e potenciais do tambaqui (*Colossoma macropomum*) para a piscicultura brasileira. *Publicações em medicina veterinária e zootecnia* **9**, 287-290 (2015).
28. Garcez, R. C. S. & Freitas, C. E. C. Seasonal catch distribution of tambaqui (*Colossoma macropomum*), Characidae in a central Amazon floodplain lake: implications for sustainable fisheries management. *Journal of Applied Ichthyology* **6**, 1-4 (2010).
29. Chen, S., Zeng, M., Sun, H., Deng, W., Lu, Y., Tao, D., Liu, Y., Zhang, S. & Ma, Y. Zebrafish Dnd protein binds to 3'UTR of geminin mRNA and regulates its expression. *BMB reports* **43**, 438-444 (2010).

30. Xing, Y., Xu, Q. & Lee, C. Widespread production of novel soluble protein isoforms by alternative splicing removal of transmembrane anchoring domains. *FEBS Letters* **555**, 572-578 (2003).
31. Resch, A., Xing, Y., Modrek, B., Gorlick, M. & Riley, R.; Lee, C. Assessing the impact of alternative splicing on domain interactions in the human proteome. *Journal of Proteome Research* **3**, 76-83 (2004).
32. Garcia, J., Gerber, S. H., Sugita, S., Südhof, T. C. & Rizo, J. A conformational switch in the Piccolo C2A domain regulated by alternative splicing. *Nature Structural & Molecular Biology* **11**, 45-53 (2004).
33. Burd, C. G. & Dreyfuss, G. Conserved Structures and Diversity of Functions of RNA-Binding Proteins. *Science* **265**, 615-621 (1994).
34. Slanchev, K., Stebler, J., Goudarzi, M., Cojocaru, V., Weidinger, G. & Raz, E. Control of Dead end localization and activity – Implications for the function of the protein in antagonizing miRNA function. *Mechanisms of Development* **126**, 270-277 (2009).
35. Iwami, K., Matsuguchi, T., Masuda, A., Kikuchi, T., Musikacharoen, T. & Yoshikai, Y. Cutting edge: naturally occurring soluble form of mouse Toll-like receptor 4 inhibits lipopolysaccharide signaling. *Journal of Immunology* **165**, 6682-6686 (2000).
36. Janssens, S., Burns, K., Tschopp, J. & Beyaert, R. Regulation of interleukin-1- and lipopolysaccharide-induced NF-kappaB activation by alternative splicing of MyD88. *Current Biology* **12**, 467-471 (2002).
37. Burns, K., Janssens, S., Brissoni, B., Olivos, N., Beyaert, R. & Tschopp, J. Inhibition of interleukin 1 receptor/ Toll-like receptor signaling through the alternatively spliced, short form of MyD88 is due to its failure to recruit IRAK-4. *Journal of Experimental Medicine* **197**, 263-268 (2003).

38. Yanagisawa, K., Tago, K., Hayakawa, M., Ohki, M., Iwahana, H. & Tominaga, S. A novel splice variant of mouse interleukin-1-receptor-associated kinase-1 (IRAK-1) activates nuclear factor-kappaB (NF-kappaB) and c-Jun N-terminal kinase (JNK). *Biochemical Journal* **370**, 159-166 (2003).
39. Shell, S. A., Hesse, C., Morris, S. M. Jr. & Milcarek, C. Elevated levels of the 64-kDa cleavage stimulatory factor (CstF-64) in lipopolysaccharide-stimulated macrophages influence gene expression and induce alternative poly(A) site selection. *Journal of Biological Chemistry* **280**, 39950- 39961 (2005).
40. Wells, C. A., Chalk, A. M., Forrest, A., Taylor, D., Waddell, N., Schroder, K., Himes, S. R., Faulkner, G., Lo, S., Kasukawa, T., Kawaji, H., Kai, C., Kawai, J., Katayama, S., Carninci, P., Hayashizaki, Y., Hume, D. A. & Grimmond, S. M. Alternate transcription of the Toll-like receptor signaling cascade. *Genome Biology* **7**(2):R10 (2006). doi:10.1186/gb-2006-7-2-r10.
41. Carpenter, S., Ricci, E. P., Mercier, B. C., Moore, M. J. & Fitzgerald, K. A. Post-transcriptional regulation of gene expression in innate immunity. *Nature Reviews Immunology* **14**, 361–376 (2014).
42. Nagasawa, K., Takeuchi, Y., Miwa, M., Higuchi, K., Morita, T., Mitsuboshi, T., Miyaki, K., Kadomura, K. & Yoshizaki, G. cDNA cloning and expression analysis of a vasa-like gene in Pacific bluefin tuna *Thunnus orientalis*. *Fisheries Science* **75**, 71-79 (2009).

### **Acknowledgements**

We thank all students and technicians from the Goro Yoshizaki's Lab at the Tokyo University of Marine Science and Technology. This study was partly supported by Grant-in-Aid for Scientific Research (KAKENHI) on Innovative Areas, 'Mechanisms regulating gamete formation in animals' (#25114005), and Conselho Nacional de Desenvolvimento Científico e Tecnológico (CNPq).



**Author Contributions**

A.C.N.V. designed and conducted all the experiments, analyzed the data and wrote the manuscript under the supervision of G.Y.; A.O. and M.M. helped in the execution and analysis of some experiments; D.P.S.J. designed the experiments; G.Y. designed and supervised all the experiments, and contributed with reagents/materials/analysis tools.

**Competing Interests**

The authors declare no competing interests.

#### 4. Considerações finais

Uma das formas de preservação da espécie *Colossoma macropomum* é o transplante de células germinativas para outras espécies parentais ou a criopreservação das células germinativas indiferenciadas. Para atingir este objetivo, o estudo destas células é indicado para aperfeiçoar a técnica e garantir melhores resultados.

Com base nas análises de expressão gênica por PCR e hibridização *in situ*, o presente trabalho mostrou que os genes *vasa* e *dead end* podem ser usados como potenciais marcadores moleculares das células germinativas do tambaqui. Nas análises de hibridização *in situ*, ambos apresentaram um padrão de expressão similar, com expressiva presença nos oócitos pré-vitelogênicos e fraca detecção nas espermatogônias. A ausência de sinalização nas células indiferenciadas pode ser devido à baixa expressão genética nestes tipos celulares, entretanto, os genes estudados ainda podem ser considerados como potenciais marcadores moleculares em estudos envolvendo descrição e comportamento de células da linhagem germinativa.

Além de ser um estudo pioneiro no que diz respeito ao isolamento dos genes específicos das células germinativas nesta espécie, o presente trabalho relatou pela primeira vez, a ocorrência de *splicing* alternativo do gene *dead end*, uma proteína de ligação crucial para a migração e sobrevivência das células germinativas primordiais. A presença de mais de uma isoforma pode estar relacionada com a regulação do gene, visto que na maioria das análises, a alta presença do transcrito tipo 1 implicou na expressão reduzida de seus variantes.

As sequências de ambos os genes obtidas neste estudo permitem a identificação das células germinativas do tambaqui, bem como a análise da expressão genética. Desta forma, estes resultados contribuem para a base do estudo da técnica de transplante para a preservação da espécie, e sugere que a expressão genética do *dead end* envolve um complexo processo regulatório que dá origem a três isoformas proteicas.

## 5. Referências

ABRAHAMS, M. V.; MANGEL, M.; HEDGES, K. Predator-prey interactions and changing environments: who benefits? **Philosophical Transactions of the Royal Society B**, London, v. 362, n. 1487, p. 2095–2104, 2007.

APONTE, P. M.; DE ROOIJ, D. G.; BASTIDAS, P. Testicular development in Brahman bulls. **Theriogenology**, New York, v. 64, n. 6, p. 1440-1455, 2005.

ARAÚJO-LIMA, C.; RUFFINO, M. L. Migratory fishes of the Brazilian Amazon. In: CAROLSFIELD, J. et al. **Migratory Fishes of South America: Biology, Fisheries, and Conservation Status**. Ottawa: World Fisheries Trust/ World Bank / International Development Research Centre, 2004. p. 384.

ARIDE, P. H. R.; ROUBACH, R.; VAL, A. L. Tolerance response of tambaqui *Colossoma macropomum* (Cuvier) to water pH. **Aquaculture Research**, Oxford, v. 38, n. 6, p. 588-594, 2007.

AVARBOCK, M. R.; BRINSTER, C. J.; BRINSTER, R. L. Reconstitution of spermatogenesis from frozen spermatogonial stem cells. **Nature Medicine**, New York, v. 2, n. 6, p. 693-696, 1996.

BALDISSEROTTO, B. Respiração e circulação. In: BALDISSEROTTO, B. **Fisiologia de peixes aplicada à piscicultura**. 2. ed. Santa Maria: Editora UFSM, 2009. p. 53-75.

BATISTA, V. S.; ISAAC, V. J.; VIANA, J. P. Exploração e manejo dos recursos pesqueiros da Amazônia. In: RUFFINO, M. L. **A pesca e os recursos pesqueiros na Amazônia brasileira**. Manaus: Ibama/ProVárzea, 2004. 272 p.

BATISTA, V. S.; PETRERE, J. R. M. Characterization of the commercial fish production landed at Manaus, Amazonas state, Brazil. **Acta amazonica**, Manaus, v. 33, n. 1, p. 53-66, 2003.

BHATTACHARYA, C. et al. The mouse *dead-end* gene isoform  $\alpha$  is necessary for germ cell and embryonic viability. **Biochemical and Biophysical Research Communications**, San Diego, v. 355, n. 1, p. 194-199, 2007.

BILLARD, R. La spermatogênese de *Pecilia reticulata*. IV. La espermiogênese. Etude ultrastructurale. **Annales De Biologie Animale, Biochimie, Biophysique**, Amsterdam, v. 10, p. 493-510, 1970.

BLAIR, J. M. et al. Growth of rainbow trout (*Oncorhynchus mykiss*) in warm-temperate lakes: implications for environmental change. **Canadian Journal of Fisheries & Aquatic Sciences**, Ottawa, v. 70, n. 5, p. 815–823, 2013.

BLAZQUEZ, M. et al. Cloning and Sequence analysis of a vasa homolog in the European sea bass (*Dicentrarchus labrax*): tissue distribution and mRNA expression levels during early development and sex differentiation. **General and Comparative Endocrinology**, New York, v. 170, n. 2, p. 322-333, 2011.

BOISCHIO, A. A. P. Produção pesqueira em Porto Velho, Rondônia (1984-89) - alguns aspectos ecológicos das espécies comercialmente relevantes. **Acta Amazônica**, Manaus, v. 22, n. 1, p. 163-172, 1992.

BOOTH, D. J. et al. Growth and temperature relationships for juvenile fish species in seagrass beds: Implications of climate change. **Journal of Fish Biology**, London, v. 84, p. 231–236, 2014.

BRINSTER, C. J. et al. Restoration of fertility by germ cell transplantation requires efficient recipient preparation. **Biology of Reproduction**, New York, v. 69, n. 2, p. 412 -420. 2003.

BRINSTER, R. L.; AVARBOCK, M. R. Germline transmission of donor haplotype following spermatogonial transplantation. **Proceedings of National Academy of Science of the United States of America**, Washington, v. 91, n. 24, p. 11303-11307, 1994.

BRINSTER, R. L.; ZIMMERMANN, J. W. Spermatogenesis following male germ-cell transplantation. **Proceedings of National Academy of Science of the United States of America**, Washington, v. 91, n. 24, p. 11298-302, 1994.

CANHOS, V. P. et al. Análise da vulnerabilidade da biodiversidade brasileira frente às mudanças climáticas globais. **Parcerias Estratégicas**, Brasília, v. 27, p. 113-148, 2008.

CAO, M. et al. Germ cell specific expression of Vasa in rare minnow, *Gobiocypris rarus*. *Comparative Biochemistry and Physiology. Part A, Molecular & Integrative Physiology*, New York, v. 162, n. 3, p. 163-170, 2012.

CARDINALI, M. et al. Hormonal regulation of vasa-like messenger RNA expression in the ovary of the marine teleost *Sparus aurata*. *Biology of Reproduction*, New York, v. 70, n. 3, p. 737-743, 2004.

CASTELLO, L. et al. The vulnerability of Amazon freshwater ecosystems. *Conservation Letters*, v. 6, n. 4, p. 217– 229, 2013.

CHENG, H. et al. Climate change patterns in Amazonia and biodiversity. *Nature Communications*, London, v. 4, p. 1-6, 2013.

CHOWN, S. L. et al. Adapting to climate change: a perspective from evolutionary physiology. *Climate Research*, Oldendorf/Luhe, v. 43, n. 1-2, p. 3-15, 2010.

CLARK, M. S. et al. Antarctic krill 454 pyrosequencing reveals chaperone and stress transcriptome. *Plos One*, San Francisco, v. 6, n. 1, e15919, 2011.

CLOUTHIER, D. E. et al. Rat spermatogenesis in mouse testis. *Nature*, Basingstoke, v. 381, n. 6581, p. 418-421, 1996.

DEL TORO-SILVA, F. M. et al. Influence of oxygen and temperature on growth and metabolic performance of *Paralichthys lethostigma* (Pleuronectiformes: Paralichthyidae). *Journal of Experimental Marine Biology and Ecology*, Amsterdam, v. 358, n. 2, p. 113–123, 2008.

DOBRINSKI, I. Male germ cell transplantation. *Reproduction and Domestic Animals*, Berlin, v. 43, suppl. 2, p. 288-294, 2008.

DOBRINSKI, I. Transplantation of germ line stem cells for the study and manipulation of spermatogenesis. *Ernst Schering Research Foundation Workshop*, Berlin, v. 60, p. 175-193, 2006.

EHMCKE, J. et al. Spermatogonia: origin, physiology and prospects for conservation and manipulation of male germ line. **Reproduction, Fertility and Development**, East Melbourne, v. 18, n. 1-2, p. 7-12, 2006.

FARLORA, R. et al. Intraperitoneal Germ Cell Transplantation in the Nile Tilapia *Oreochromis niloticus*. **Marine Biotechnology**, New York, v. 16, n. 3, p. 309-320, 2014.

FAZZI-GOMES, P. et al. High genetic diversity and connectivity in *Colossoma macropomum* in the Amazon basin revealed by microsatellite markers. **Genetics and Molecular Biology**, Ribeirão Preto, v. 40, n. 1, p. 142-146, 2017.

FICKE, A. D.; MYRICK, C. A.; HANSEN, L. J. Potential impacts of global climate change on freshwater fisheries. **Reviews in Fish Biology and Fisheries**, London, v. 17, n. 4, p. 581–613, 2007.

GAMITO, R. et al. Climate-induced changes in fish landings of different fleet components of Portuguese fisheries. **Regional Environmental Change**, New York, v. 13, n. 2, p. 413–421, 2013.

GARCEZ, R. C. S.; FREITAS, C. E. C. Seasonal catch distribution of tambaqui (*Colossoma macropomum*), Characidae in a central Amazon floodplain lake: implications for sustainable fisheries management. **Journal of Applied Ichthyology**, Berlin, v. 27, n. 1, p.1-4, 2010.

GOMES, L. C.; SIMÕES, L. N.; ARAÚJO-LIMA, C. A. R. M. Tambaqui (*Colossoma macropomum*). In: BALDISSEROTTO, B.; GOMES, L. C. **Espécies nativas para piscicultura no Brasil**. 2. ed. Santa Maria: Editora da UFSM, 2010. p. 175-204.

GOULDING, M.; CARVALHO, M. L. Life history and management of the tambaqui (*Colossoma macropomum*, Characidae): an important Amazonian food fish. **Revista Brasileira de Zoologia**, Curitiba, v. 1, n. 2, p. 107-133, 1982.

GRIER, H. J. Comparative organization of Sertoli cells including the Sertoli cell barrier. In: RUSSELL, L. D.; GRISWOLD, M. D. **The Sertoli cell**. Clearwater, FL: Cache River Press, 1993. p. 703-739.

GRISWOLD, M. D.; MCLEAN, D.; RUSSELL, L. D. Promise and limitations of germ cell transplantation in the testis. **Journal of Andrology**, Lawrence, v. 22, n. 5, p. 713-717, 2001.

GUSTAFSON, E. A.; WESSEL, G. M. Vasa genes: emerging roles in the germ line and in multipotent cells. **BioEssays**, Cambridge, v. 32, n. 7, p. 626–637, 2010.

HAMASAKI, M. et al. Production of tiger puffer *Takifugu rubripes* offspring from triploid grass puffer *Takifugu niphobles* parents. **Marine Biotechnology**, New York, v. 19, n. 6, p. 579-591, 2017.

HELFMAN, G. S. et al. **The Diversity of Fishes: Biology, Evolution, and Ecology**, 2. ed. Oxford: Wiley-Blackwell, 2009. 736 p.

HIGUCHI, K. et al.. Colonization, proliferation, and survival of intraperitoneally transplanted yellowtail *Seriola quinqueradiata* spermatogonia in nibe croaker *Nibea mitsukurii* recipient. **Fisheries Science**, Tokyo, v. 77, n. 1, p. 69–77, 2011.

HILL, J. R.; DOBRINSKI, I. Male germ cell transplantation in livestock. **Reproduction, Fertility and Development**, East Melbourne v. 18, n. 1-2, p. 13-18, 2006.

HIROTA, M. et al. The climatic sensitivity of the forest, savanna and forest–savanna transition in tropical South America. **New physiologist**, Oxford, v. 187, n. 3, p. 707–719, 2010.

HIROTA, M.; OYAMA, M. D.; NOBRE, C. Concurrent climate impacts of tropical South America land-cover change. **Atmospheric Science Letters**, London, v. 12, n. 3, p. 261– 267, 2011.

HONDA, E. M. S. Contribuição ao conhecimento da biologia de peixes do Amazonas. II - Alimentação de tambaqui, *Colossoma bidens* (Spix). **Acta Amazonica**, Manaus, v. 4, n. 2, p. 47-53, 1974.

HORVAY, K. et al. *Xenopus Dead end* mRNA is a localized maternal determinant that serves a conserved function in germ cell development. **Developmental Biology**, San Diego, v. 291, n. 1, p. 1–11, 2006.

IBAMA. INSTITUTO BRASILEIRO DO MEIO AMBIENTE E DOS RECURSOS NATURAIS RENOVÁVEIS. Portaria nº 65, de 30 de outubro de 2003. **Diário Oficial da União**, Brasília, DF, 31 out. 2003. Seção 1, p. 60.

IPCC. INTERGOVERNMENTAL PANEL ON CLIMATE CHANGE. **Climate Change 2014**: Synthesis Report. Contribution of Working Groups I, II and III to the Fifth Assessment Report of the Intergovernmental Panel on Climate Change. Geneva: WHO and UNEP, 2014.

IPCC. INTERGOVERNMENTAL PANEL ON CLIMATE CHANGE. **Climate Change 2007**: Contribution of Working Groups I, II and III to the Fourth Assessment Report of the Intergovernmental Panel on Climate Change. Geneva: WHO and UNEP, 2007.

ISAAC, V. J.; RUFFINO, M. L. Population dynamics of tambaqui, *Colossoma macropomum* Cuvier, in the Lower Amazon, Brazil. **Fisheries Management and Ecology**, Oxford, v. 3, n. 4, p. 315–333, 1996.

ISMIÑO-ORBE, R.A. **Excreção e efeito da amônia sobre o crescimento do tambaqui (*Colossoma macropomum* Cuvier, 1818)**. 1997. 29 f. Dissertação (Mestrado) - Curso de Biologia de Água Doce e Pesca Interior, Instituto Nacional de Pesquisas da Amazônia, Manaus, 1997.

JEGÚ, M. Subfamily Serrasalminae (Pacu and Piranhas). In: REIS, R. E.; KULLANDER, S. O.; FERRARIS JR., C. J. **Check List of the Freshwater Fishes of South and Central America**. Porto Alegre: EDIPUCRS, 2003. p. 182-196.

KANATSU-SHINOHARA, M. et al. Production of transgenic rats via lentiviral transduction and xenogeneic transplantation of spermatogonial stem cells. **Biology of Reproduction**, New York, v. 79, n. 6, p. 1121-1128, 2008.

KNAUT, H. et al. Zebrafish vasa RNA but not its protein is a component of the germ plasm and segregates asymmetrically before germline specification. **The Journal of Cell Biology**, New York, v. 149, n. 4, p. 875-888, 2000.

KOBAYASHI, T.; KAJIURA-KOBAYASHI, H.; NAGAHAMA, Y. Differential expression of vasa homologue gene in the germ cells during oogenesis and spermatogenesis in a teleost fish, tilapia, *Oreochromis niloticus*. **Mechanisms of Development**, Limerick, v. 99, n. 1-2, p. 139-142, 2000.



KUROKAWA, H. et al. Germ cells are essential for sexual dimorphism in the medaka gonad. **Proceedings of the National Academy of Sciences of the United States of America**, Washington, v. 104, n. 43, p. 16958–16963, 2007.

LACERDA, S. M. S. N. et al. Germ cells transplantation in fish: the Nile-tilapia model. **Animal Reproduction**, Belo Horizonte, v. 3, n. 2, p. 146-159, 2006.

LEE, S. et al. Generation of functional eggs and sperm from cryopreserved whole testes. **Proceedings of the National Academy of Sciences of the United States of America**, Washington, v. 110, n. 5, p. 1640-1645, 2013.

LEE, S.; IWASAKI, Y.; YOSHIZAKI, G. Long-term (5 years) cryopreserved spermatogonia have high capacity to generate functional gametes via interspecies transplantation in salmonids. **Cryobiology**, Amsterdam, v. 73, n. 2, p. 286-290, 2016a.

LEE, S.; KATAYAMA, N.; YOSHIZAKI, G. Generation of juvenile rainbow trout derived from cryopreserved whole ovaries by intraperitoneal transplantation of ovarian germ cells. **Biochemical and Biophysical Research Communications**, San Diego, v. 478, n. 3, p. 1478-1483, 2016b.

LI, Q. et al. Application of dead end knockout zebrafish as recipients of germ cell transplantation. **Molecular Reproduction and Development**, Hoboken, v. 84, n. 10, p. 1100-1111, 2017.

LIMA, R. C. C.; CAVALCANTE, A. M. B.; MARIN, A. M. P. **Desertificação e Mudanças Climáticas no Semiárido Brasileiro**. Campina Grande: Instituto Nacional do Semiárido, 2011. 209 p.

LIN, S. et al. Production of germ-line chimeras in zebrafish by cell transplants from genetically pigmented to albino embryos. **Proceedings of the National Academy of Sciences of the United States of America**, Washington, v. 89, n. 10, p. 4519-4523, 1992.

LIN, F. et al. Germline-specific and sexually dimorphic expression of a dead end gene homologue in turbot (*Scophthalmus maximus*). **Theriogenology**, New York, v. 80, n. 6, p. 665–672, 2013

LIU, L. et al. Medaka dead end encodes a cytoplasmic protein and identifies embryonic and adult germ cells. **Gene Expression Patterns**, Amsterdam, v. 9, n. 7, p. 541–548, 2009.

LOPES, T. M. et al. Two sides of a coin: Effects of climate change on the native and non native distribution of *Colossoma macropomum* in South America. **PLoS One**, San Francisco, v. 12, n. 6, e0179684, 2017.

LORENZ, E. N. Deterministic Nonperiodic Flow. **Journal of Atmospheric Sciences**, v. 20, p. 130-114, 1963.

LUBZENS, E. et al. Oogenesis in teleosts: How fish eggs are formed. **General and Comparative Endocrinology**, New York, v. 165, n. 3, p. 367 389, 2010.

MARCUSCHI, M. et al. Purification, characterization and substrate specificity of a trypsin from the Amazonian fish tambaqui (*Colossoma macropomum*). **Biochemical and Biophysical Research Communications**, San Diego, v. 396, n. 3, p. 667-673, 2010.

MARENGO, J. A. **Mudanças climáticas globais e seus efeitos sobre a biodiversidade**: caracterização do clima atual e definição de alterações climáticas para o território brasileiro ao longo do século XXI. 2. ed. Brasília: Instituto Brasileiro de Meio Ambiente e Recursos Naturais Renováveis, 2007. 82 p.

MCLEAN, D. Spermatogonial stem cell transplantation and testicular function. **Cell and Tissue Research**, Berlin, v. 322, n. 1, p. 21-31, 2005.

MIURA, T.; MIURA, C. I. Molecular control mechanisms of fish spermatogenesis. **Fish Physiology and Biochemistry**, v. 28, n. 1-4, p. 181-186, 2003.

MORITA, T. et al. Production of donor-derived offspring by allogeneic transplantation of spermatogonia in the yellowtail (*Seriola quinqueradiata*). **Biology of Reproduction**, New York, v. 86, n. 6, p. 176, 2012.

NAGANO, M. et al. Transgenic mice produced by retroviral transduction of male germ-line stem cells. **Proceedings of National Academy of Science of the United States of America**, Washington, v. 98, n. 23, p. 13090-13095, 2001.

- NEAR, T.J. et al. Resolution of ray-finned fish phylogeny and timing of diversification. **Proceedings of the National Academy of Sciences**, Washington, v. 109, n. 34, p. 13698–13703, 2012.
- NELSON, J. S.; GRANDE, T. C.; WILSON, M. V. H. **Fishes of the World**. 5. ed. New York: John Wiley & Sons, 2016. 752p.
- NELSON, J. S. **Fishes of the world**. 3. ed. New York: John Wiley & Sons, 1994. 600 p.
- NOBRE, C. A.; SAMPAIO, G.; SALAZAR, L. Mudanças climáticas e Amazônia. **Ciência e Cultura**, São Paulo, v. 59, n. 3, p. 22–27, 2007.
- NOBREGA, R. H.; BATLOUNI, S. R.; FRANCA, L. R. An overview of functional and stereological evaluation of spermatogenesis and germ cell transplantation in fish. **Fish Physiology and Biochemistry**, Dordrecht, v. 35, n. 1, p.197–206, 2009.
- NÓBREGA, R. H. et al. Spermatogonial Stem Cell Niche and Spermatogonial Stem Cell Transplantation in Zebrafish. **PLoS One**, San Francisco, v. 5, n. 9, e12808, 2010.
- OGAWA, T. et al. Xenogeneic spermatogenesis following transplantation of hamster germ cells to mouse testes. **Biology of Reproduction**, New York, v. 60, n. 2, p. 515-521, 1999.
- OKUTSU, T. et al. Production of trout offspring from triploid salmon parents. **Science**, Washington, v. 317, n. 5844, p. 1517, 2007.
- OKUTSU, T. et al. Testicular germ cells can colonize sexually undifferentiated embryonic gonad and produce functional eggs in fish. **Proceedings of the National Academy of Sciences of the United States of America**, Washington, v. 103, n. 8, p. 2725–2729, 2006a.
- OKUTSU, T. et al. Manipulation of fish germ cell: visualization, cryopreservation and transplantation. **Journal of Reproduction and Development**, Tokyo, v. 52, n. 6, p. 685-693, 2006b.

OLSEN, L. C.; AASLAND, R.; FJOSE, A. A vasa-like gene in zebrafish identifies putative primordial germ cells. **Mechanisms of Development**, Limerick, v. 66, n. 1-2, p. 95-105, 1997.

ORWIG, K. E.; SCHLATT, S. Cryopreservation and transplantation of spermatogonia and testicular tissue preservation of male fertility. **Journal of the National Cancer Institute Monographs**, Bethesda, v. 34, p. 51-56, 2005.

PERRY, A. L. et al. Climate change and distribution shifts in marine fishes. **Science**, Washington, v. 308, n. 5730, p. 1912–1915, 2005.

PORTNER, H. O.; FARRELL, A. P. Physiology and Climate Change. **Science**, Washington, v. 322, p. 690–692, 2008.

PUDNEY, J. Comparative cytology of the non-mammalian vertebrate Sertoli cell. In: RUSSELL, L. D.; GRISWOLD, M. D. **The Sertoli cell**. Clearwater, FL: Cache River Press, 1993. p. 611-657.

PUDNEY, J. Spermatogenesis in nonmammalian vertebrates. **Microscopy Research and Technique**, New York, v. 32, n. 6, p. 459-497, 1995.

RAHMAN, A.N.M.A.; ABDULLAH, R.B.; WAN-KHADIJAH, W.E. Gametogenesis, Fertilization and Early Embryogenesis in Mammals with Special Reference to Goat: A Review. **Journal of Biological Sciences**, v. 8, n. 7, p. 1115-1128, 2008.

RAZ, E. The function and regulation of vasa-like genes in germ-cell development. **Genome Biology**, London, v. 1, n. 3, 2000. doi: 10.1186/gb-2000-1-3-reviews1017

RUSSELL, L. D. et al. Mammalian spermatogenesis. In: RUSSELL, L. D. et al. **Histological and histopathological evaluation of the testis**. Clearwater, FL: Cache River Press, 1990. p. 1-40.

SAITO, T. et al. Xenogenesis in teleost fish through generation of germ-line chimeras by single primordial germ cell transplantation. **Biology of Reproduction**, Champaign, v. 78, n. 1, p. 159-166, 2008.

SAITO, T. et al. The germ line lineage in ukigori, *Gymnogobius* species (Teleostei: Gobiidae) during embryonic development. **The International Journal of Developmental Biology**, Vizcaya, v. 48, n. 10, p. 1079-1085, 2004.

SÁNCHEZ-BOTERO, J. I.; GARCEZ, D. S. Histórico do comprimento do comprimento total de tambaqui (*Colossoma macropomum*, CHARACIFORMES: CHARACIDAE, CUVIER, 1818) desembarcado no mercado de Tefé, Amazonas, Brasil, com nove recomendações para o manejo pesqueiro da espécie. **UAKARI**, v. 2, p. 27-33, 2006.

SATO, M. et al. Production of genetically diversified fish seeds using spermatogonial transplantation. **Aquaculture**, v. 422-423, p. 218-224, 2014.

SCHULZ, R. W.; MIURA, T. Spermatogenesis and its endocrine regulation. **Fish Physiology and Biochemistry**, v. 26, n. 1, p. 43-56, 2002.

SCHULZ, R. W. et al. . Spermatogenesis in fish. **General and Comparative Endocrinology**, New York, v. 165, n. 3, p. 390-411, 2010.

SCHULZ, R. W.; NÓBREGA, R. H. Anatomy and Histology of Fish Testis. In: FARRELL, A. P. **Encyclopedia of Fish Physiology: From Genome to Environment**. San Diego: Academic Press, 2011. p. 616-626.

SEKI, S. et al. Production of the medaka derived from vitrified whole testes by germ cell transplantation. **Scientific Reports**, London, v. 7, p. 43185, 2017.

SHARMA, R.; AGARWAL, A. Spermatogenesis: an overview. In: ZINI, A.; AGARWAL, A. **Sperm Chromatin: Biological and Clinical Applications in Male Infertility and Assisted Reproduction**. USA: Springer, 2011. p. 19-44.

SHARPE, R. M. Regulation of spermatogenesis. In: KNOBIL, E.; NEILL, J. D. **The physiology of reproduction**. New York: Raven Press, 1994. p. 1363-1434.

SHIKINA, S.; IHARA, S.; YOSHIZAKI G. Culture conditions for maintaining the survival and mitotic activity of rainbow trout transplantable type A spermatogonia. **Molecular Reproduction and Development**, New York, v. 75, n. 3, p. 529-537, 2008.

SHINOHARA, T. et al. Germ line stem cell competition in postnatal mouse testes. **Biology of Reproduction**, New York, v. 66, n. 5, p. 1491-1497, 2002.

SHINOHARA, T. et al. Remodeling of the postnatal mouse testis is accompanied by dramatic changes in stem cell number and niche accessibility. **Proceedings of the National Academy of Sciences of the United States of America**, Washington, v. 98, n. 11, p. 6186-6191, 2001.

SHINOMIYA, A. et al. The vasa-like gene, olvas, identifies the migration path of primordial germ cells during embryonic body formation stage in the medaka, *Oryzias latipes*. **Development, Growth & Differentiation**, Tokyo, v. 42, n. 4, p. 317-26, 2000.

SIEGFRIED, K.R.; NUSSLEIN-VOLHARD, C. Germ line control of female sex determination in zebrafish. **Developmental Biology**, San Diego, v. 324, n. 2, p. 277–287, 2008.

SKUGOR, A. et al. Conserved mechanisms for germ cell-specific localization of nanos3 transcripts in teleost species with aquaculture significance. **Marine Biotechnology**, New York, v. 16, n. 3, p. 256-264, 2013.

SOMERO, G. N. The physiology of climate change: how potentials for acclimatization and genetic adaptation will determine 'winners' and 'losers'. **Journal of Experimental Biology**, London, v. 213, n. 6, p. 912–920, 2010.

SOUSA, R. G. C. et al. Mudanças sociais na pesca artesanal: um estudo a partir da pressão sobre o estoque de tambaqui (*Colossoma macropomum*, Cuvier, 1818) do Lago Grande de Manacapuru (AM). In: ENCONTRO DA ASSOCIAÇÃO NACIONAL DE PESQUISA E PÓS-GRADUAÇÃO EM AMBIENTE E SOCIEDADE: “**Mudanças Ambientais Globais**” **A contribuição da ANPPAS ao debate**, 4., 2008, Brasília. [Anais...] Brasília: ANPPAS, 2008. p. 1 - 13.

STREIT JR., D. P. et al. **Recomendações técnicas para a reprodução do tambaqui**. Teresina: Embrapa Meio-Norte, 2012. p. 1-30. (Documentos, 212).

TAKEUCHI, Y.; YOSHIZAKI, G.; TAKEUCHI, T. Generation of Live Fry from Intraperitoneally Transplanted Primordial Germ Cells in Rainbow Trout. **Biology of Reproduction**, New York, v. 69, n. 4, p. 1142-1149.

TAKEUCHI, Y. et al. Development of spermatogonial cell transplantation in nibe croaker, *Nibea mitsukurii* (Perciformes, Sciaenidae). **Biology of Reproduction**, New York, v. 81, n. 6, p. 1055–1063, 2009.

TAKEUCHI, Y.; YOSHIZAKI, G.; TAKEUCHI, T. Biotechnology: Surrogate broodstock produces salmonids. **Nature**, London, v. 430, n. 7000, p. 629-630, 2004.

TALLING, J. F. Environmental controls on the functioning of shallow tropical lakes. **Hydrobiologia**, The Hague, v. 458, n. 1-3, p. 1–8, 2001.

TOKARZ, R. R. Oogonial proliferation, oogenesis and folliculogenesis in nonmammalian vertebrates. In: JONES, R. E. **The vertebrate ovary: Comparative Biology and evolution**. New York and London: Plenum Press, 1978. p. 145-179.

VAL, A.; HONCZARK, A. **Tambaqui: Criando peixes na Amazônia**. 19. ed. Manaus: INPA, 1995. 160 p.

VILELA, D. A. R. et al. Spermatogenesis in teleost: insights from the Nile tilapia (*Oreochromis niloticus*) model. **Fish Physiology and Biochemistry**, v. 28, n. 1-4, p. 187-190, 2003.

VON STETINA, J. R.; ORR-WEAVER, T. L. Developmental Control of Oocyte Maturation and Egg Activation in Metazoan Models. **Cold Spring Harbor Perspectives in Biololy**, Woodbury, v. 3, n. 10, a005553, 2011.

WALLACE, R. A.; SELMAN, K. Cellular and dynamic aspects of oocyte growth in teleosts. **American Zoologist**, Thousand Oaks, v. 21, n. 2, p. 325–343, 1981.

WEIDINGER, G. et al. Dead end, a novel vertebrate germ plasm component, is required for zebrafish primordial germ cell migration and survival. **Current Biology**, v. 13, 1429–1434, 2003.

WILLI, Y.; VAN BUSKIRK, J.; HOFFMANN, A. A. Limits to the adaptive potential of small populations. **Annual Review of Ecology, Evolution, and Systematics**, v. 37, p. 433–458, 2006.

WONG, T. et al. Zebrafish Germline Chimeras Produced by Transplantation of Ovarian Germ Cells into Sterile Host Larvae. **Biology of Reproduction**, New York, v. 84, n. 6, p. 1190–1197, 2011.

XU H, GUI J, HONG Y. Differential expression of vasa RNA and protein during spermatogenesis and oogenesis in the gibel carp (*Carassius auratus gibelio*), a bisexually and gynogenetically reproducing vertebrate. **Developmental Dynamics**, New York, v. 233, n. 3, p. 872-82, 2005.

XU, H. et al. Boule is present in fish and bisexually expressed in adult and embryonic germ cells of medaka. **PLoS One**, San Francisco, v. 4, n. 6, p. 1-12, 2009.

YAFFE, M. P. Mitochondrial morphogenesis: fusion factor for fly fertility. **Current biology**, Cambridge, v. 7, n. 12, p. R782-783, 1997.

YAZAWA, R. et al. Chub mackerel gonads support colonization, survival, and proliferation of intraperitoneally transplanted xenogenic germ cells. **Biology of Reproduction**, New York, v. 82, n. 5, p. 896–904, 2010.

YAZAWA, R. et al. The Pacific bluefin tuna (*Thunnus orientalis*) **dead end** gene is suitable as a specific molecular marker of type A spermatogonia. **Molecular Reproduction and Development**, Hoboken, v. 80, n. 10, p. 871–880, 2013.

YOON, C.; KAWAKAMI, K.; HOPKINS, N. Zebrafish vasa homologue RNA is localized to the cleavage planes of 2- and 4-cell-stage embryos and is expressed in the primordial germ cells. **Development**, Cambridge, v. 124, n. 16, p. 3157- 3165, 1997.

YOSHIKAWA, H. et al. Efficient production of donor-derived gametes from triploid recipients following intra-peritoneal germ cell transplantation into a marine teleost, Nibe croaker (*Nibe mitsukurii*). **Aquaculture**, v. 478, p. 35-47, 2017.

YOSHIZAKI, G. et al. Spermatogonial transplantation in fish: A novel method for the preservation of genetic resources. **Comparative Biochemistry and Physiology**, Amsterdam, v. 6, n. 1, p. 55-61, 2011



YOSHIZAKI, G. et al. Cloning and characterization of a vasa-like gene in rainbow trout and its expression in the germ cell lineage. **Molecular Reproduction and Development**, Hoboken, v. 55, n. 4, p. 364-371, 2000.

YOSHIZAKI, G. et al. Production of germ cell-deficient salmonids by dead end gene knockdown, and their use as recipients for germ cell transplantation. **Molecular Reproduction and Development**, Hoboken, v. 83, n. 4, p. 298-311, 2016.

## **APÊNDICES**

## Apêndice 1: Normas utilizadas para a preparação do Capítulo II

Guide for Authors: Gene

### Your Paper Your Way

We now differentiate between the requirements for new and revised submissions. You may choose to submit your manuscript as a single Word or PDF file to be used in the refereeing process. Only when your paper is at the revision stage, will you be requested to put your paper in to a 'correct format' for acceptance and provide the items required for the publication of your article.

**Before preparing a paper for submission to *Gene***, the author(s) should carefully read these instructions, and *Gene's* List of Abbreviations, thus avoiding needless delays during the editorial process. Papers should be carefully prepared in *Gene's* style. When a paper is submitted to *Gene*, the corresponding author is responsible for all authors having seen and approved the original paper and, eventually, the proofs.

The paper should be accompanied by a Cover Letter, in which the authors are invited to suggest the names of two editorial board members who could serve as Handling Editor. Authors will also need to supply the names of eight potential referees (as well as their affiliations, e-mail addresses and areas of expertise). In order to ensure a maximum of objectivity, the names of scientists the authors do not wish to be consulted in the reviewing process can also be provided, as well as any other special requests.

*Gene* requires all new nucleotide and amino acid sequences to be deposited. Obtain and include an accession number with all sequences. The most convenient method for submitting sequence data is by World Wide Web:

EMBL

GenBank

DDBJ

Alternatively, the stand-alone submission tool "Sequin" is available from NCBI.

If requested the database will withhold release of data until publication.

If references are quoted as 'In press', the relevant manuscript(s) should also be attached. Should authors be requested by the Editor to modify the text prior to publication, the revised version should be submitted within 2 months. After this period, the manuscript will be dealt with as a new one.

### Types of paper

All reports should explicitly state the biological relevance of the function that is the subject of the paper.

Methods papers will be considered only if they are of general importance with considerable original and useful information. Minor improvements to existing methods are not acceptable.

Letters to the Editor that are pertinent to material published in GENE or that discuss problems of general interest are selected for publication. The author of a paper in question is usually given an opportunity to reply.

Reviews or Mini-reviews are generally solicited by the Editors of the journal. However, prospective authors interested in contributing such a paper are invited to contact the Editor-in-Chief.

Gene Wiki Reviews are invited reviews published under a dual publication model. Invited authors submit gene-specific review articles and update the corresponding Wikipedia pages. To contribute to this series, please FIRST contact the editors to verify the proposed gene(s) qualify for the series and to receive an invitation.

### **Contact details for submission**

Papers should be submitted to Gene's online submission system, <http://ees.elsevier.com/gene/>. A PDF file comprising all text and figures is acceptable for initial submission. When submitting a revised manuscript, separate electronic files are required. For questions on the submission and reviewing process, please contact the Editorial Office at [gene@elsevier.com](mailto:gene@elsevier.com).

### **Submission checklist**

You can use this list to carry out a final check of your submission before you send it to the journal for review. Please check the relevant section in this Guide for Authors for more details.

#### **Ensure that the following items are present:**

One author has been designated as the corresponding author with contact details:

- E-mail address
- Full postal address

All necessary files have been uploaded:

*Manuscript:*

- Include keywords
- All figures (include relevant captions)
- All tables (including titles, description, footnotes)
- Ensure all figure and table citations in the text match the files provided

• Indicate clearly if color should be used for any figures in print  
*Graphical Abstracts / Highlights files* (where applicable)

*Supplemental files* (where applicable)

Further considerations

- Manuscript has been 'spell checked' and 'grammar checked'
- All references mentioned in the Reference List are cited in the text, and vice versa

- Permission has been obtained for use of copyrighted material from other sources (including the Internet)

- A competing interests statement is provided, even if the authors have no competing interests to declare

- Journal policies detailed in this guide have been reviewed

- Referee suggestions and contact details provided, based on journal requirements

For further information, visit our Support Center.

**Ethics in publishing**

Please see our information pages on Ethics in publishing and Ethical guidelines for journal publication.

**Declaration of interest**

All authors must disclose any financial and personal relationships with other people or organizations that could inappropriately influence (bias) their work. Examples of potential conflicts of interest include employment, consultancies, stock ownership, honoraria, paid expert testimony, patent applications/registrations, and grants or other funding. Authors must disclose any interests in two places: 1. A summary declaration of interest statement in the title page file (if double-blind) or the manuscript file (if single-blind). If there are no interests to declare then please state this: 'Declarations of interest: none'. This summary statement will be ultimately published if the article is accepted. 2. Detailed disclosures as part of a separate Declaration of Interest form, which forms part of the journal's official records. It is important for potential interests to be declared in both places and that the information matches. More information.

**Submission declaration and verification**

Submission of an article implies that the work described has not been published previously (except in the form of an abstract or as part of a published lecture or academic thesis or as an electronic preprint, see 'Multiple, redundant or concurrent publication' section of our ethics policy for more information), that it is not under consideration for publication elsewhere, that its publication is approved by all authors and tacitly or explicitly by the responsible authorities where the work was carried out, and that, if accepted, it will not be published elsewhere in the same form, in English or in any other language, including electronically without the written consent of the copyright-holder. To verify originality, your article may be checked by the originality detection service Crossref Similarity Check.

**Contributors**

Each author is required to declare his or her individual contribution to the article: all authors must have materially participated in the research and/or article preparation, so roles for all authors should be described. The statement that all authors have approved the final article should be true and included in the disclosure.

**Role of the funding source**

You are requested to identify who provided financial support for the conduct of the research and/or preparation of the article and to briefly describe the role of the sponsor(s), if any, in study design; in the collection, analysis and interpretation of data; in the writing of the report; and in the decision to submit the article for publication. If the funding source(s) had no such involvement then this should be stated.

### **Funding body agreements and policies**

Elsevier has established a number of agreements with funding bodies which allow authors to comply with their funder's open access policies. Some funding bodies will reimburse the author for the Open Access Publication Fee. Details of existing agreements are available online.

### **Open access**

This journal offers authors a choice in publishing their research:

### **Subscription**

Articles are made available to subscribers as well as developing countries and patient groups through our universal access programs.

- No open access publication fee payable by authors.

### **Open access**

- Articles are freely available to both subscribers and the wider public with permitted reuse.

- An open access publication fee is payable by authors or on their behalf, e.g. by their research funder or institution.

Regardless of how you choose to publish your article, the journal will apply the same peer review criteria and acceptance standards.

For open access articles, permitted third party (re)use is defined by the following Creative Commons user licenses:

### **New submissions**

Submission to this journal proceeds totally online and you will be guided stepwise through the creation and uploading of your files. The system automatically converts your files to a single PDF file, which is used in the peer-review process.

As part of the Your Paper Your Way service, you may choose to submit your manuscript as a single file to be used in the refereeing process. This can be a PDF file or a Word document, in any format or lay-out that can be used by referees to evaluate your manuscript. It should contain high enough quality figures for refereeing. If you prefer to do so, you may still provide all or some of the source files at the initial submission. Please note that individual figure files larger than 10 MB must be uploaded separately.

### **References**

There are no strict requirements on reference formatting at submission. References can be in any style or format as long as the style is consistent. Where applicable, author(s) name(s), journal title/book title, chapter title/article title, year of publication, volume number/book chapter and the pagination must be present. Use of DOI is highly encouraged. The reference style used by the journal will be applied to the accepted article by Elsevier at the proof stage. Note that missing data will be highlighted at proof stage for the author to correct.

### **Formatting requirements**

There are no strict formatting requirements but all manuscripts must contain the essential elements needed to convey your manuscript, for example Abstract, Keywords, Introduction, Materials and Methods, Results, Conclusions, Artwork and Tables with Captions.

If your article includes any Videos and/or other Supplementary material, this should be included in your initial submission for peer review purposes.

Divide the article into clearly defined sections.

### **Abbreviations**

Consult Gene's List of Abbreviations and the pertinent literature for accepted abbreviations, especially for genes and proteins; list all those used, even if already in Gene's list (create new abbreviations if necessary). Be meticulous with symbols. For proteins, use Roman letters with at least the first letter capitalized (e.g., Hprt, HPRT or  $\gamma$ Gal) for genes (or DNA) use italicized letters (e.g., *lacZ*, *hprt*, *HPRT* or *cat gene*, not HPRT or CAT gene). Consult the nomenclature (or usage) for the particular organism concerned to use (or create) proper gene/protein abbreviations.

Please note that the instructions related to Abstract, Keywords & Math formulae still apply to all new submissions.

The journal does not publish patient photographs except as Supplementary Information. These images should be replaced within the article with diagrams of an idealized human form indicating any phenotypic abnormality.

### **Peer review**

This journal operates a single blind review process. All contributions will be initially assessed by the editor for suitability for the journal. Papers deemed suitable are then typically sent to a minimum of two independent expert reviewers to assess the scientific quality of the paper. The Editor is responsible for the final decision regarding acceptance or rejection of articles. The Editor's decision is final. More information on types of peer review.

### **Article structure**

#### **Subdivision - numbered sections**

Divide your article into clearly defined and numbered sections. Subsections should be numbered 1.1 (then 1.1.1, 1.1.2, ...), 1.2, etc. (the abstract is not included in section numbering). Use this numbering also for internal cross-referencing: do not just refer to 'the text'. Any subsection may be given a brief heading. Each heading should appear on its own separate line.

#### **Introduction**

State the objectives of the work and provide an adequate background, avoiding a detailed literature survey or a summary of the results.

#### **Material and methods**

Provide sufficient details to allow the work to be reproduced by an independent researcher. Methods that are already published should be summarized, and indicated by a reference. If quoting directly from a previously published method, use quotation marks and also cite the source. Any modifications to existing methods should also be described.

### **Results**

Results should be clear and concise.

### **Discussion**

This should explore the significance of the results of the work, not repeat them. A combined Results and Discussion section is often appropriate. Avoid extensive citations and discussion of published literature.

The Results and Discussion sections should refer to the data shown in the figures and tables, and briefly discuss their significance. Divide these sections into numbered subsections with short subtitles (lower-case, Roman, not underlined). Where the Results section is combined with the Discussion section, the last subsection, subtitled Conclusions, should be short and divided into points.

### **Conclusions**

The main conclusions of the study may be presented in a short Conclusions section, which may stand alone or form a subsection of a Discussion or Results and Discussion section.

### **Essential title page information**

- **Title.** Concise and informative. Titles are often used in information-retrieval systems. Avoid abbreviations and formulae where possible.

- **Author names and affiliations.** Please clearly indicate the given name(s) and family name(s) of each author and check that all names are accurately spelled. You can add your name between parentheses in your own script behind the English transliteration. Present the authors' affiliation addresses (where the actual work was done) below the names. Indicate all affiliations with a lower-case superscript letter immediately after the author's name and in front of the appropriate address. Provide the full postal address of each affiliation, including the country name and, if available, the e-mail address of each author.

- **Corresponding author.** Clearly indicate who will handle correspondence at all stages of refereeing and publication, also post-publication. This responsibility includes answering any future queries about Methodology and Materials. **Ensure that the e-mail address is given and that contact details are kept up to date by the corresponding author.**

- **Present/permanent address.** If an author has moved since the work described in the article was done, or was visiting at the time, a 'Present address' (or 'Permanent address') may be indicated as a footnote to that author's name. The address at which the author actually did the work must be retained as the main, affiliation address. Superscript Arabic numerals are used for such footnotes.



**Abstract**

A concise and factual abstract is required. The abstract should state briefly the purpose of the research, the principal results and major conclusions. An abstract is often presented separately from the article, so it must be able to stand alone. For this reason, References should be avoided, but if essential, then cite the author(s) and year(s). Also, non-standard or uncommon abbreviations should be avoided, but if essential they must be defined at their first mention in the abstract itself.

**Highlights**

Highlights are mandatory for this journal. They consist of a short collection of bullet points that convey the core findings of the article and should be submitted in a separate editable file in the online submission system. Please use 'Highlights' in the file name and include 3 to 5 bullet points (maximum 85 characters, including spaces, per bullet point). You can view example Highlights on our information site.

**Keywords**

Immediately after the abstract, provide a maximum of 6 keywords, using American spelling and avoiding general and plural terms and multiple concepts (avoid, for example, 'and', 'of'). Be sparing with abbreviations: only abbreviations firmly established in the field may be eligible. These keywords will be used for indexing purposes.

Use only words not already present in the title.

**Acknowledgements**

Collate acknowledgements in a separate section at the end of the article before the references and do not, therefore, include them on the title page, as a footnote to the title or otherwise. List here those individuals who provided help during the research (e.g., providing language help, writing assistance or proof reading the article, etc.).

**Formatting of funding sources**

List funding sources in this standard way to facilitate compliance to funder's requirements:

Funding: This work was supported by the National Institutes of Health [grant numbers xxxx, yyyy]; the Bill & Melinda Gates Foundation, Seattle, WA [grant number zzzz]; and the United States Institutes of Peace [grant number aaaa].

It is not necessary to include detailed descriptions on the program or type of grants and awards. When funding is from a block grant or other resources available to a university, college, or other research institution, submit the name of the institute or organization that provided the funding.

If no funding has been provided for the research, please include the following sentence:

This research did not receive any specific grant from funding agencies in the public, commercial, or not-for-profit sectors.

## **Electronic artwork**

### *General points*

- Make sure you use uniform lettering and sizing of your original artwork.
- Preferred fonts: Arial (or Helvetica), Times New Roman (or Times), Symbol, Courier.
- Number the illustrations according to their sequence in the text.
- Use a logical naming convention for your artwork files.
- Indicate per figure if it is a single, 1.5 or 2-column fitting image.
- For Word submissions only, you may still provide figures and their captions, and tables within a single file at the revision stage.
- Please note that individual figure files larger than 10 MB must be provided in separate source files.

A detailed guide on electronic artwork is available.

### *Formats*

Regardless of the application used, when your electronic artwork is finalized, please 'save as' or convert the images to one of the following formats (note the resolution requirements for line drawings, halftones, and line/halftone combinations given below):

EPS (or PDF): Vector drawings. Embed the font or save the text as 'graphics'.

TIFF (or JPG): Color or grayscale photographs (halftones): always use a minimum of 300 dpi.

TIFF (or JPG): Bitmapped line drawings: use a minimum of 1000 dpi. TIFF (or JPG): Combinations bitmapped line/half-tone (color or grayscale): a minimum of 500 dpi is required.

Please do not:

- Supply files that are optimized for screen use (e.g., GIF, BMP, PICT, WPG); the resolution is too low.
- Supply files that are too low in resolution.
- Submit graphics that are disproportionately large for the content.

## **Color artwork**

Please make sure that artwork files are in an acceptable format (TIFF (or JPEG), EPS (or PDF) or MS Office files) and with the correct resolution. If, together with your accepted article, you submit usable color figures then Elsevier will ensure, at no additional charge, that these figures will appear in color online (e.g., ScienceDirect and other sites) in addition to color reproduction in print. Further information on the preparation of electronic artwork.

## **Figure captions**

Ensure that each illustration has a caption. A caption should comprise a brief title (**not** on the figure itself) and a description of the illustration. Keep text in the illustrations themselves to a minimum but explain all symbols and abbreviations used.

## References

### Citation in text

Please ensure that every reference cited in the text is also present in the reference list (and vice versa). Any references cited in the abstract must be given in full. Unpublished results and personal communications are not recommended in the reference list, but may be mentioned in the text. If these references are included in the reference list they should follow the standard reference style of the journal and should include a substitution of the publication date with either 'Unpublished results' or 'Personal communication'. Citation of a reference as 'in press' implies that the item has been accepted for publication.

### Web references

As a minimum, the full URL should be given and the date when the reference was last accessed. Any further information, if known (DOI, author names, dates, reference to a source publication, etc.), should also be given. Web references can be listed separately (e.g., after the reference list) under a different heading if desired, or can be included in the reference list.

### Data references

This journal encourages you to cite underlying or relevant datasets in your manuscript by citing them in your text and including a data reference in your Reference List. Data references should include the following elements: author name(s), dataset title, data repository, version (where available), year, and global persistent identifier. Add [dataset] immediately before the reference so we can properly identify it as a data reference. The [dataset] identifier will not appear in your published article.

### Reference formatting

There are no strict requirements on reference formatting at submission. References can be in any style or format as long as the style is consistent. Where applicable, author(s) name(s), journal title/book title, chapter title/article title, year of publication, volume number/book chapter and the pagination must be present. Use of DOI is highly encouraged. The reference style used by the journal will be applied to the accepted article by Elsevier at the proof stage. Note that missing data will be highlighted at proof stage for the author to correct. If you do wish to format the references yourself they should be arranged according to the following examples:

Duncan, C.C., Kosmidis, M.K., Mirsky, A.F., 2005. Closed head injury-related information processing deficits: An event-related potential analysis. *Int. J. Psychophysiol* 58, 133-157

Bure , J., Bure ov , O., Huston, J.P., 1983. Techniques and Basic Experiments for the Study of Brain and Behavior, 2nd edn., Elsevier, Amsterdam, 326 pp.

Swaab, D.F., 1982. Neuropeptides. Their distribution and function in the brain. In: Buijs, R.M., P vet, P., Swaab, D.F. (Eds.), *Chemical Transmission in the Brain. The Role of Amines, Amino Acids and Peptides*, Progress in Brain Research, Vol. 55, Elsevier, Amsterdam, pp. 97-122.

[dataset] Oguro, M., Imahiro, S., Saito, S., Nakashizuka, T., 2015. Mortality data for Japanese oak wilt disease and surrounding forest compositions. Mendeley Data, v1. <http://dx.doi.org/10.17632/xwj98nb39r.1>.

## Apêndice 2: Normas utilizadas para a preparação do Capítulo III

Guide for Authors: Scientific Reports

General information for preparing manuscripts

Format of articles

**Scientific Reports** publishes original research in one format, Article. In most cases we do not impose strict limits on word count or page number. We do, however, strongly encourage authors to write concisely and to adhere to the guidelines below.

Articles should ideally be no more than 11 typeset pages in length. As a guide, the main text (not including Abstract, Methods, References and figure legends) should be no more than 4,500 words. The maximum Article title length is 20 words. The Abstract — which must be no more than 200 words long and contain no references — should serve both as a general introduction to the topic and as a brief, non-technical summary of the main results and their implications.

For the main body of the text, there are no explicit requirements for section organization. According to the authors' preference, the text may be organized as best suits the research. As a guideline and in the majority of cases, however, we recommend that you structure your manuscript as follows:

- Introduction
- Results (with subheadings)
- Discussion (without subheadings)
- Methods

A specific order for the main body of the text is not compulsory and, in some cases, it may be appropriate to combine sections. Figure legends are limited to 350 words. As a guideline references should be limited to 60 (this is not strictly enforced). Footnotes should not be used.

We suggest that Articles contain no more than 8 display items (figures and/or tables). In addition, a limited number of uncaptioned molecular structure graphics and numbered mathematical equations may be included if necessary. To enable typesetting of papers, the number of display items should be commensurate with the word length — we suggest that for Articles with less than 2,000 words, no more than 4 figures/tables should be included. Please note that schemes are not used and should be presented as figures.

Authors must provide a competing interests statement within the manuscript file.

Submissions should include a cover letter, a manuscript text file, individual figure files and optional supplementary information files. For first submissions (i.e. not revised manuscripts), authors may incorporate the manuscript text and figures into a single file up to 3 MB in size; the figures may be inserted in the text at the appropriate positions, or grouped at the end. Supplementary information should be combined and supplied as a single separate file, preferably in PDF format.

The following file types can be uploaded for Article text: txt, doc, docx, tex, (pdf [first submissions only]).

A [submission template](#) is available in the [Overleaf](#) template gallery to help you prepare a LaTeX manuscript within the **Scientific Reports** formatting criteria.

**Scientific Reports** is read by scientists from diverse backgrounds. In addition, many are not native English speakers. Authors should, therefore, give careful thought to how their findings may be communicated clearly. Although a shared basic knowledge of science may be assumed, please bear in mind that the language and concepts that are standard in one field may be unfamiliar to non-specialists. Thus, technical jargon should be avoided and clearly explained where its use is unavoidable.

Abbreviations, particularly those that are not standard, should also be kept to a minimum. Where unavoidable, abbreviations should be defined in the text or legends at their first occurrence, and abbreviations should be used thereafter. The background, rationale and main conclusions of the study should be clearly explained. Titles and abstracts in particular should be written in language that will be readily intelligible to any scientist. We strongly recommend that authors ask a colleague with different expertise to review the manuscript before submission, in order to identify concepts and terminology that may present difficulties to non-specialist readers.

The format requirements of **Scientific Reports** are described below. **Scientific Reports** uses UK English spelling.

#### **Format of manuscripts**

In most cases we do not impose strict limits on word counts and page numbers, but we encourage authors to write concisely and suggest authors adhere to the guidelines below. For a definitive list of which limits are mandatory please visit the [submission checklist page](#).

Articles should be no more than 11 typeset pages in length. As a guide, the main text (not including Abstract, Methods, References and figure legends) should be no more than 4,500 words. The maximum title length is 20 words. The Abstract (without heading) - which must be no more than 200 words long and contain no references - should serve both as a general introduction to the topic and as a brief, non-technical summary of the main results and their implications.

The manuscript text file should include the following parts, in order: a title page with author affiliations and contact information (the corresponding author should be identified with an asterisk). The main text of an Article can be organised in different ways and according to the authors' preferences, it may be appropriate to combine sections.

As a guideline, we recommend that sections include an Introduction of referenced text that expands on the background of the work. Some overlap with the Abstract is acceptable. This may then be followed by sections headed Results (with subheadings), Discussion (without subheadings) and Methods.

The main body of text must be followed by References, Acknowledgements (optional), Author Contributions (names must be given as initials), Additional Information (including a Competing Interests Statement),

Figure Legends (these are limited to 350 words per figure) and Tables (maximum size of one page). Footnotes are not used.

For first submissions (i.e. not revised manuscripts), authors may choose to incorporate the manuscript text and figures into a single file up to 3 MB in size in either a Microsoft Word, LaTeX, or PDF format - the figures may be inserted within the text at the appropriate positions, or grouped at the end.

For revised manuscripts authors should provide all textual content in a single file, prepared using either Microsoft Word or LaTeX. We do not accept PDF files for article text for revised manuscripts. Figures should be provided as individual files.

Supplementary Information should be combined and supplied as a separate file, preferably in PDF format. The first page of the Supplementary Information file should include the title of the manuscript and the author list.

Authors who do not incorporate the manuscript text and figures into a single file should adhere to the following: all textual content should be provided in a single file, prepared using either Microsoft Word or LaTeX; figures should be provided as individual files.

The manuscript file should be formatted as single-column text without justification. Pages should be numbered using an Arabic numeral in the footer of each page. Standard fonts are recommended and the 'symbols' font should be used for representing Greek characters.

## Methods

Where appropriate, we recommend that authors limit their Methods section to 1,500 words. Authors must ensure that their Methods section includes adequate experimental and characterization data necessary for others in the field to reproduce their work. Descriptions of standard protocols and experimental procedures should be given. Commercial suppliers of reagents or instrumentation should be identified only when the source is critical to the outcome of the experiments. Sources for kits should be identified. Experimental protocols that describe the synthesis of new compounds should be included. The systematic name of the compound and its bold Arabic numeral are used as the heading for the experimental protocol. Thereafter, the compound is represented by its assigned bold numeral. Authors should describe the experimental protocol in detail, referring to amounts of reagents in parentheses, when possible (eg 1.03 g, 0.100 mmol). Standard abbreviations for reagents and solvents are encouraged. Safety hazards posed by reagents or protocols should be identified clearly. Isolated mass and percent yields should be reported at the end of each protocol.

## References

References will not be copy edited by **Scientific Reports**. References will be linked electronically to external databases where possible, making correct formatting of the references essential.

References should be numbered sequentially, first throughout the text, then in tables, followed by figures; that is, references that only appear in tables or figures should be last in the reference list. Only one publication is given for each number. Only papers or datasets that have been published or

accepted by a named publication, recognized preprint server or data repository should be in the numbered list; preprints of accepted papers in the reference list should be submitted with the manuscript. Published conference abstracts and numbered patents may be included in the reference list. Grant details and acknowledgements are not permitted as numbered references. Footnotes are not used.

**Scientific Reports** uses standard **Nature** referencing style. All authors should be included in reference lists unless there are six or more, in which case only the first author should be given, followed by 'et al.'. Authors should be listed last name first, followed by a comma and initials (followed by full stops) of given names. Article and dataset titles should be in Roman text, only the first word of the title should have an initial capital and the title should be written exactly as it appears in the work cited, ending with a full stop. Book titles should be given in italics and all words in the title should have initial capitals. Journal and data repository names are italicized and abbreviated (with full stops) according to common usage. Volume numbers and the subsequent comma appear in bold. The full page range should be given (or article number), where appropriate.

Published papers:

Printed journals

Schott, D. H., Collins, R. N. & Bretscher, A. Secretory vesicle transport velocity in living cells depends on the myosin V lever arm length. **J. Cell Biol.** **156**, 35-39 (2002).

Online only

Bellin, D. L. **et al.** Electrochemical camera chip for simultaneous imaging of multiple metabolites in biofilms. **Nat. Commun.** **7**, 10535; [10.1038/ncomms10535](https://doi.org/10.1038/ncomms10535) (2016).

For papers with more than five authors include only the first author's name followed by '**et al.**'.

Books:

Smith, J. Syntax of referencing in **How to reference books** (ed. Smith, S.) 180-181 (Macmillan, 2013).

Online material:

Babichev, S. A., Ries, J. & Lvovsky, A. I. Quantum scissors: teleportation of single-mode optical states by means of a nonlocal single photon. Preprint at <https://arxiv.org/abs/quant-ph/0208066> (2002).

Manaster, J. Sloth squeak. **Scientific American Blog Network** <http://blogs.scientificamerican.com/psi-vid/2014/04/09/sloth-squeak> (2014).

Hao, Z., AghaKouchak, A., Nakhjiri, N. & Farahmand, A. Global integrated drought monitoring and prediction system (GIDMaPS) data sets. **figshare** <https://doi.org/10.6084/m9.figshare.853801> (2014).

### Acknowledgements

Acknowledgements should be brief, and should not include thanks to anonymous referees and editors, or effusive comments. Grant or contribution numbers may be acknowledged. Assistance from medical writers, proof-readers and editors should also be acknowledged here.



**Author contributions**

*Scientific Reports* requires an Author Contribution Statement as described in the Author responsibilities section of our Editorial and Publishing Policies.

**Competing interests**

A competing interests statement is required for all accepted papers published in *Scientific Reports*. If there is no conflict of interest, a statement declaring this will still be included in the paper.

**Data availability**

*Scientific Reports* requires a Data Availability Statement to be included in the Methods section of submitted manuscripts (see 'Availability of materials and data' section for more information).

**Figure legends**

Figure legends begin with a brief title sentence for the whole figure and continue with a short description of what is shown in each panel in sequence and the symbols used; methodological details should be minimised as much as possible. Each legend must total no more than 350 words. Text for figure legends should be provided in numerical order after the references.

**Tables**

Please submit tables in your main article document in an editable format (Word or TeX/LaTeX, as appropriate), and not as images. Tables that include statistical analysis of data should describe their standards of error analysis and ranges in a table legend.

**General figure guidelines**

Authors are responsible for obtaining permission to publish any figures or illustrations that are protected by copyright, including figures published elsewhere and pictures taken by professional photographers. The journal cannot publish images downloaded from the internet without appropriate permission.

Figures should be numbered separately with Arabic numerals in the order of occurrence in the text of the manuscript. When appropriate, figures should include error bars. A description of the statistical treatment of error analysis should be included in the figure legend. Please note that schemes are not used; sequences of chemical reactions or experimental procedures should be submitted as figures, with appropriate captions. A limited number of uncaptioned graphics depicting chemical structures - each labelled with their name, by a defined abbreviation, or by the bold Arabic numeral - may be included in a manuscript.

Figure lettering should be in a clear, sans-serif typeface (for example, Helvetica); the same typeface in the same font size should be used for all figures in a paper. Use 'symbols' font for Greek letters. All display items should be on a white background, and should avoid excessive boxing, unnecessary

colour, spurious decorative effects (such as three-dimensional 'skyscraper' histograms) and highly pixelated computer drawings. The vertical axis of histograms should not be truncated to exaggerate small differences. Labelling must be of sufficient size and contrast to be readable, even after appropriate reduction. The thinnest lines in the final figure should be no smaller than one point wide. Authors will see a proof that will include figures.

Figures divided into parts should be labelled with a lower-case bold a, b, and so on, in the same type size as used elsewhere in the figure. Lettering in figures should be in lower-case type, with only the first letter of each label capitalized. Units should have a single space between the number and the unit, and follow SI nomenclature (for example, ms rather than msec) or the nomenclature common to a particular field. Thousands should be separated by commas (1,000). Unusual units or abbreviations should be spelled out in full or defined in the legend. Scale bars should be used rather than magnification factors, with the length of the bar defined on the bar itself rather than in the legend. In legends, please use visual cues rather than verbal explanations such as "open red triangles".

Unnecessary figures should be avoided: data presented in small tables or histograms, for instance, can generally be stated briefly in the text instead. Figures should not contain more than one panel unless the parts are logically connected; each panel of a multipart figure should be sized so that the whole figure can be reduced by the same amount and reproduced at the smallest size at which essential details are visible.

#### Figures for peer review

At the initial submission stage authors may choose to upload separate figure files or to incorporate figures into the main article file, ensuring that any inserted figures are of sufficient quality to be clearly legible.

When submitting a revised manuscript all figures must be uploaded as separate figure files ensuring that the image quality and formatting conforms to the specifications below.

#### Figures for publication

Each complete figure must be supplied as a separate file upload. Multi-part/panel figures must be prepared and arranged as a single image file (including all sub-parts; a, b, c, etc.). Please do not upload each panel individually.

Please read the [digital images integrity and standards](#) section of our [Editorial and Publishing Policies](#). When possible, we prefer to use original digital figures to ensure the highest-quality reproduction in the journal. For optimal results, prepare figures to fit A4 page-width. When creating and submitting digital files, please follow the guidelines below. Failure to do so, or to adhere to the following guidelines, can significantly delay publication of your work.

Authors are responsible for obtaining permission to publish any figures or illustrations that are protected by copyright, including figures published elsewhere and pictures taken by professional photographers. The journal cannot publish images downloaded from the internet without appropriate permission.

### **Chemical and biological nomenclature and abbreviations**

Molecular structures are identified by bold, Arabic numerals assigned in order of presentation in the text. Once identified in the main text or a figure, compounds may be referred to by their name, by a defined abbreviation, or by the bold Arabic numeral (as long as the compound is referred to consistently as one of these three).

When possible, authors should refer to chemical compounds and biomolecules using systematic nomenclature, preferably using IUPAC. Standard chemical and biological abbreviations should be used. Unconventional or specialist abbreviations should be defined at their first occurrence in the text.

### **Gene nomenclature**

Authors should use approved nomenclature for gene symbols, and use symbols rather than italicized full names (for example Ttn, not titin). Please consult the appropriate nomenclature databases for correct gene names and symbols. A useful resource is LocusLink.

Approved human gene symbols are provided by HUGO Gene Nomenclature Committee (HGNC), e-mail: [hgnc@genenames.org](mailto:hgnc@genenames.org); see also [www.genenames.org](http://www.genenames.org). Approved mouse symbols are provided by The Jackson Laboratory, e-mail: [nomen@informatics.jax.org](mailto:nomen@informatics.jax.org); see also [www.informatics.jax.org/mgihome/nomen](http://www.informatics.jax.org/mgihome/nomen).

For proposed gene names that are not already approved, please submit the gene symbols to the appropriate nomenclature committees as soon as possible, as these must be deposited and approved before publication of an article.

Avoid listing multiple names of genes (or proteins) separated by a slash, as in 'Oct4/Pou5f1', as this is ambiguous (it could mean a ratio, a complex, alternative names or different subunits). Use one name throughout and include the other at first mention: 'Oct4 (also known as Pou5f1)'.

## 6. Vita

Ana Carina Nogueira Vasconcelos nasceu dia 08 de junho de 1987 no município de Divinópolis – MG, filha de Antonio Lucio Nogueira e Rosana Joyce de Vasconcelos Aguiar Nogueira.

Cursou o Ensino Fundamental e Médio no Colégio Anglo, no município de Divinópolis – MG. Em 2007, ingressou no Curso de Ciências Biológicas na Universidade Federal de Lavras (UFLA) e realizou experimentos na Universidad de Murcia, na Espanha. Em 2012 e 2013, cursou o Mestrado em Ciências Veterinárias na UFLA, período no qual realizou cursos de Biologia Molecular na Universidad Nacional de Rosário, na Argentina. Em 2014, iniciou o curso de Doutorado junto ao Programa de Pós-Graduação em Zootecnia da Universidade Federal do Rio Grande do Sul (UFRGS) na área de concentração Produção Animal, como bolsista CAPES.

No final do primeiro ano de doutorado, recebeu treinamento para executar a técnica de transplante de células-tronco germinativas em peixes, na Tokyo University of Marine Science and Technology (TUMSAT – Japão). No início de 2016, foi contemplada com uma bolsa de doutorado sanduíche pelo CNPq para realizar o seu experimento de doutorado na TUMSAT, onde aprendeu técnicas de Biologia Molecular, incluindo Engenharia Genética.