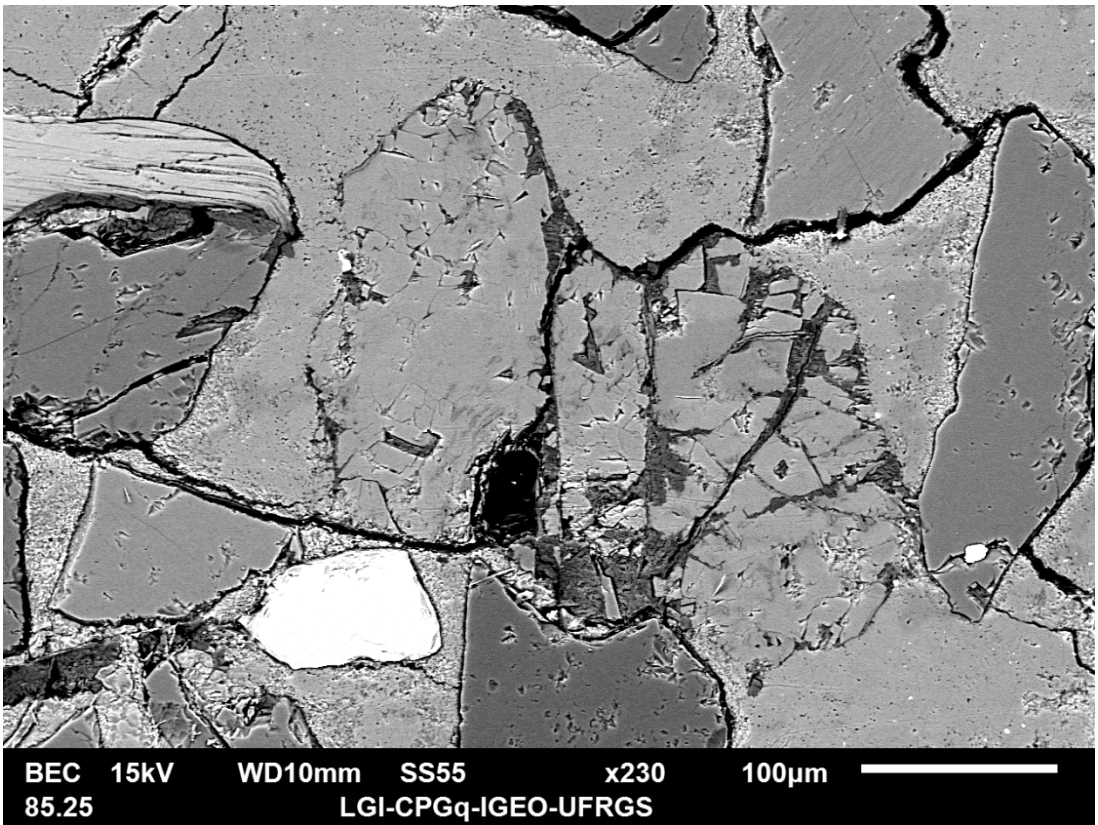
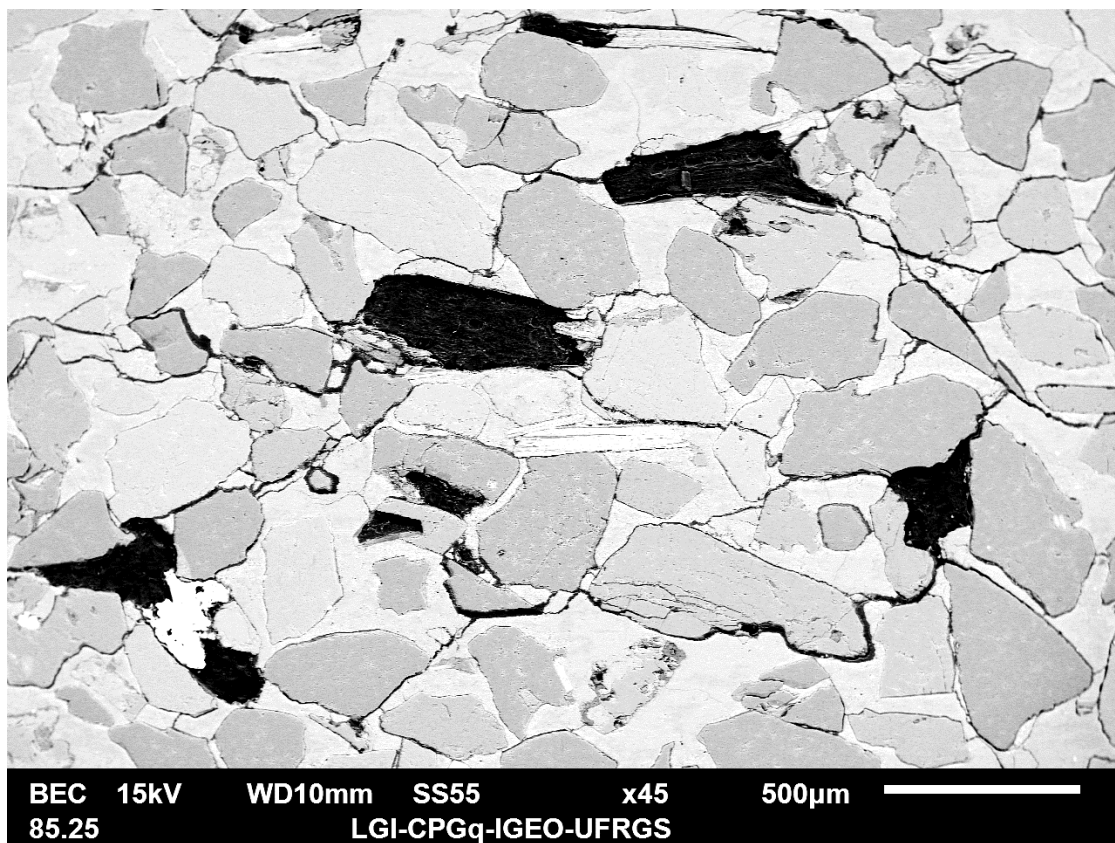


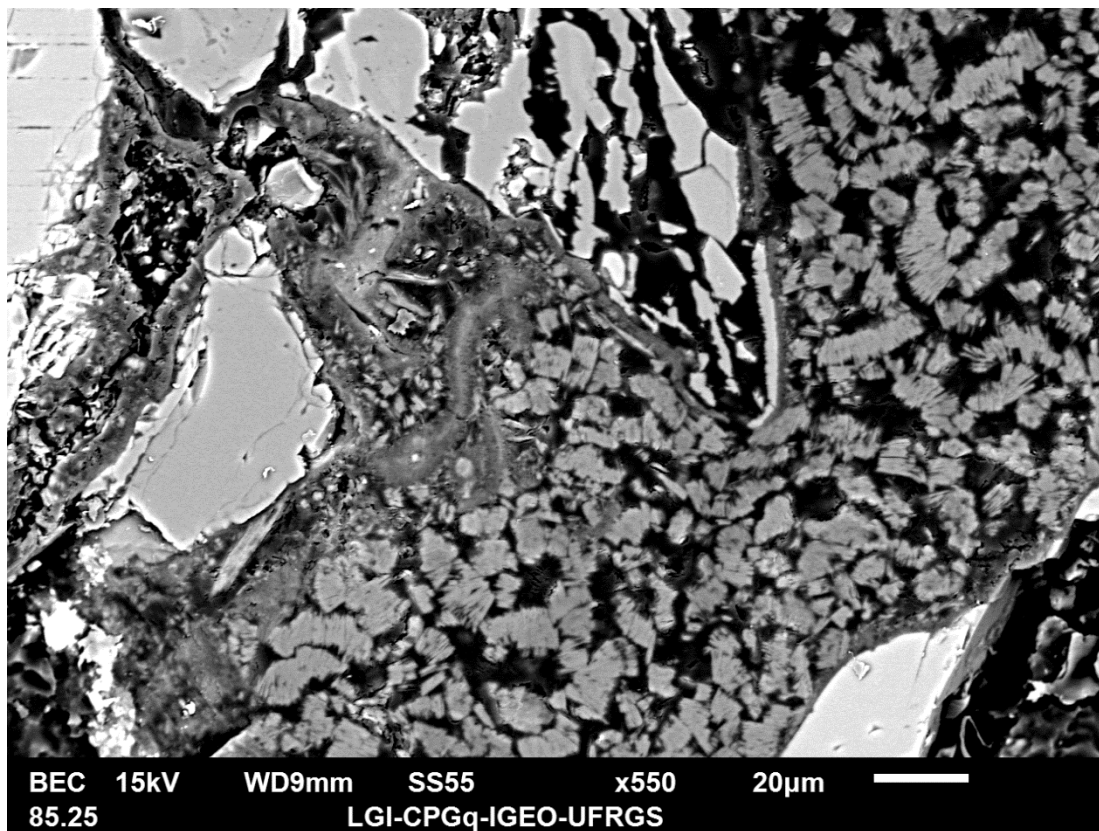
Caulinita vermicular parcialmente substituída por calcita.



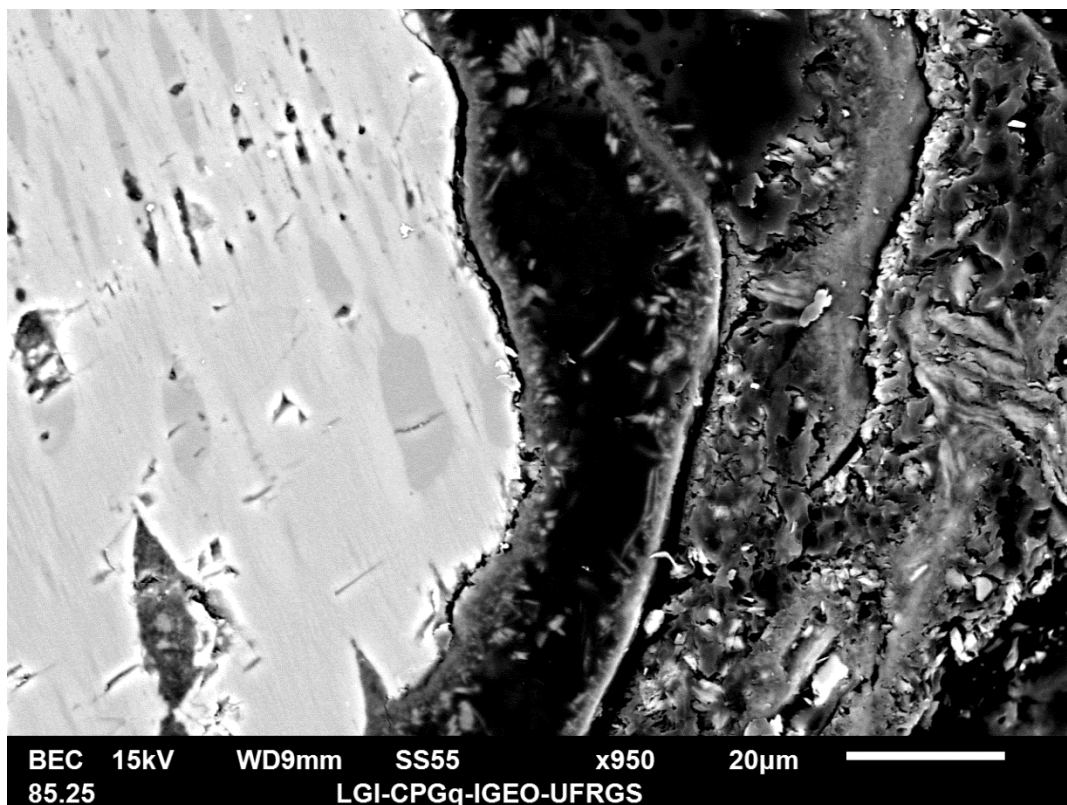
Calcita substituindo grão.



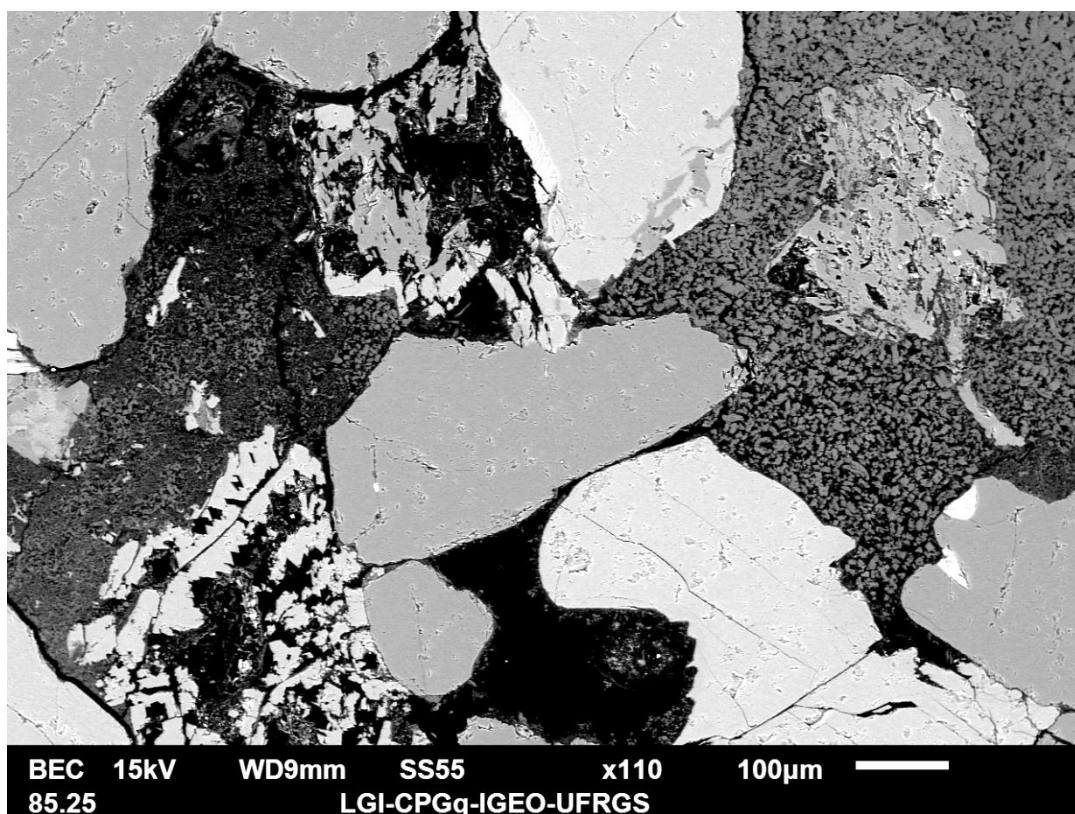
Abundante cimentação por calcita.



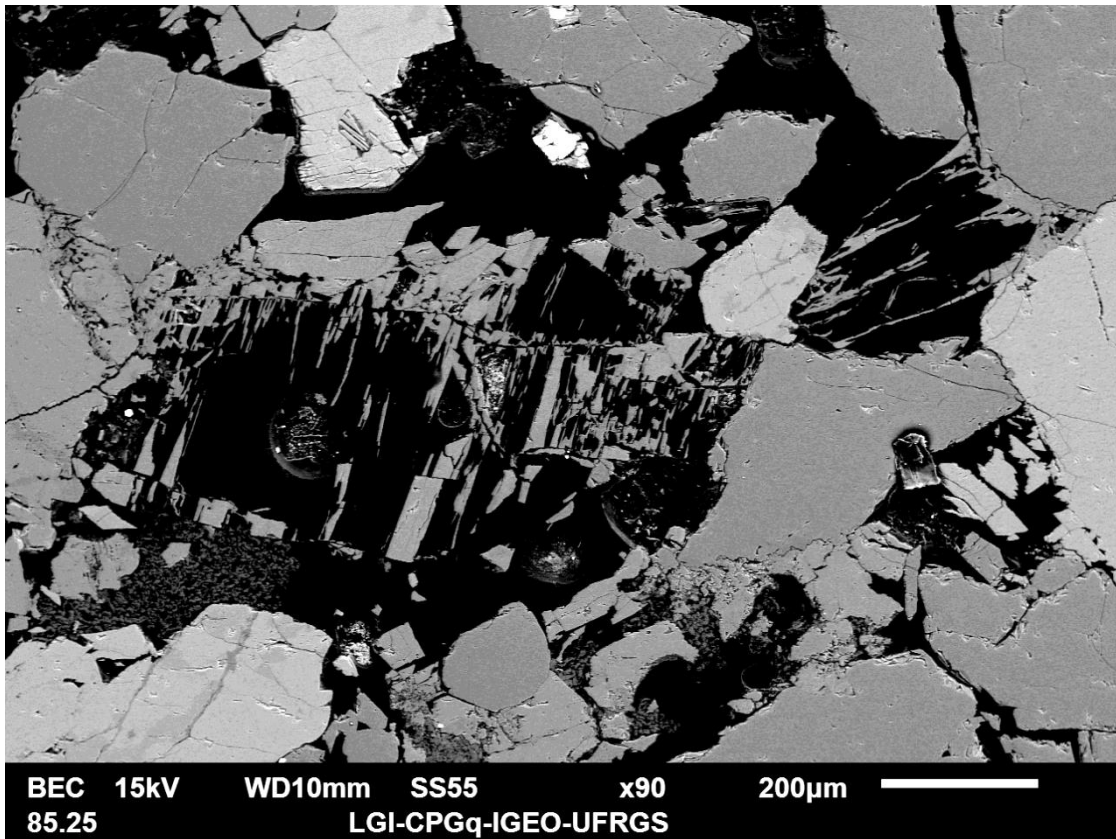
Caulinita vermicular cobrindo franjas e cutículas de esmectita.



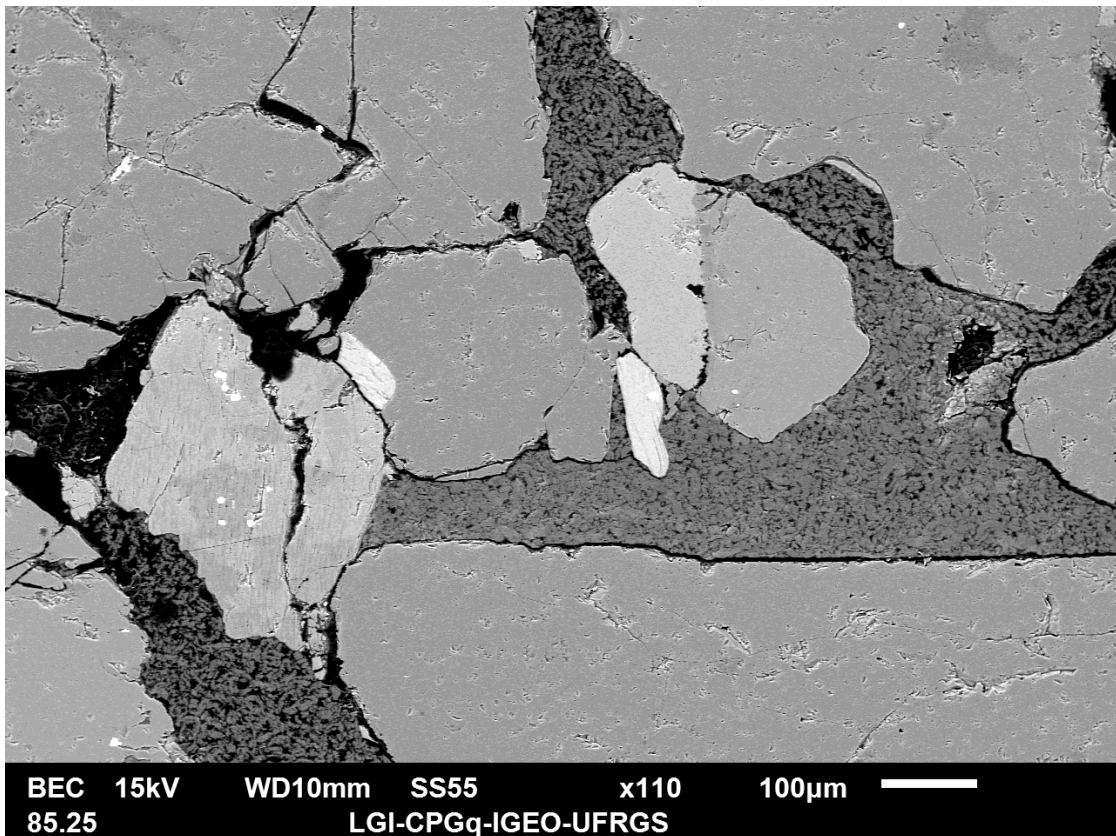
Franjas de esmectita cobrindo grão de pertita, e microcristalina, substituindo grãos.



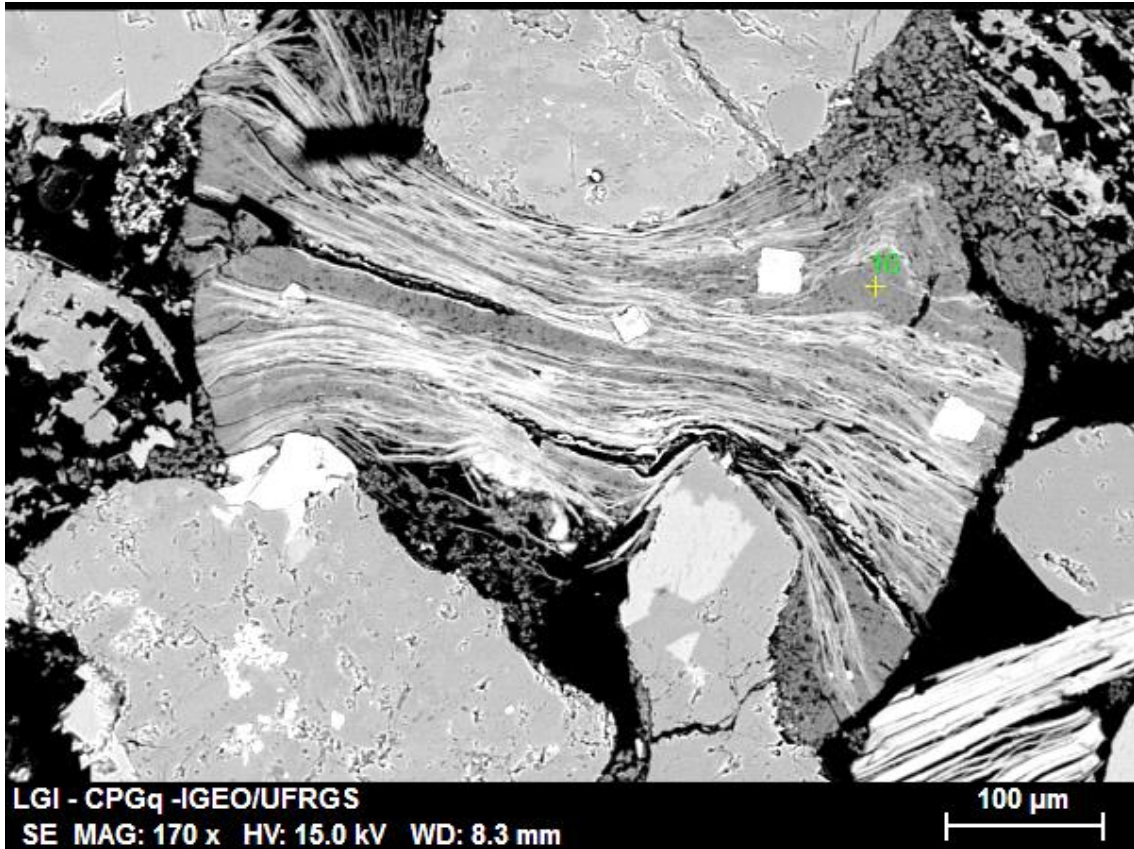
Caulinita intergranular preenchendo poro e intragranular substituindo grãos. Dissolução de feldspatos.



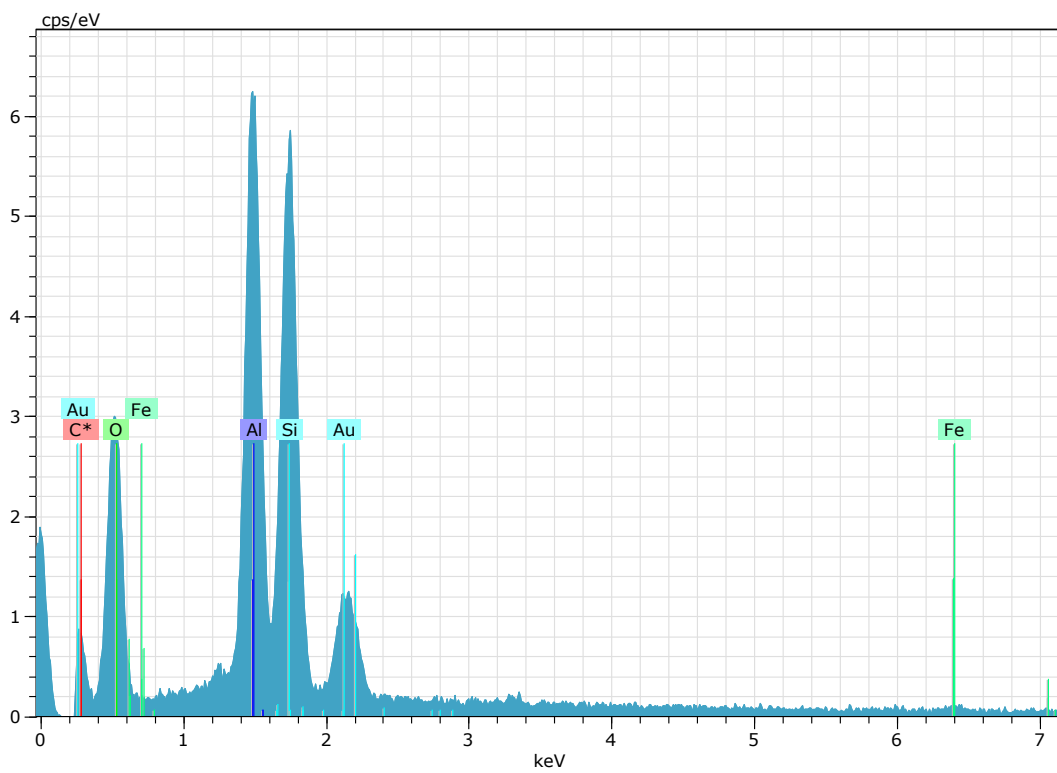
Grão de plagioclásio dissolvido.



Caulinita substituindo intraclasto compactado e preenchendo porosidade intergranular.



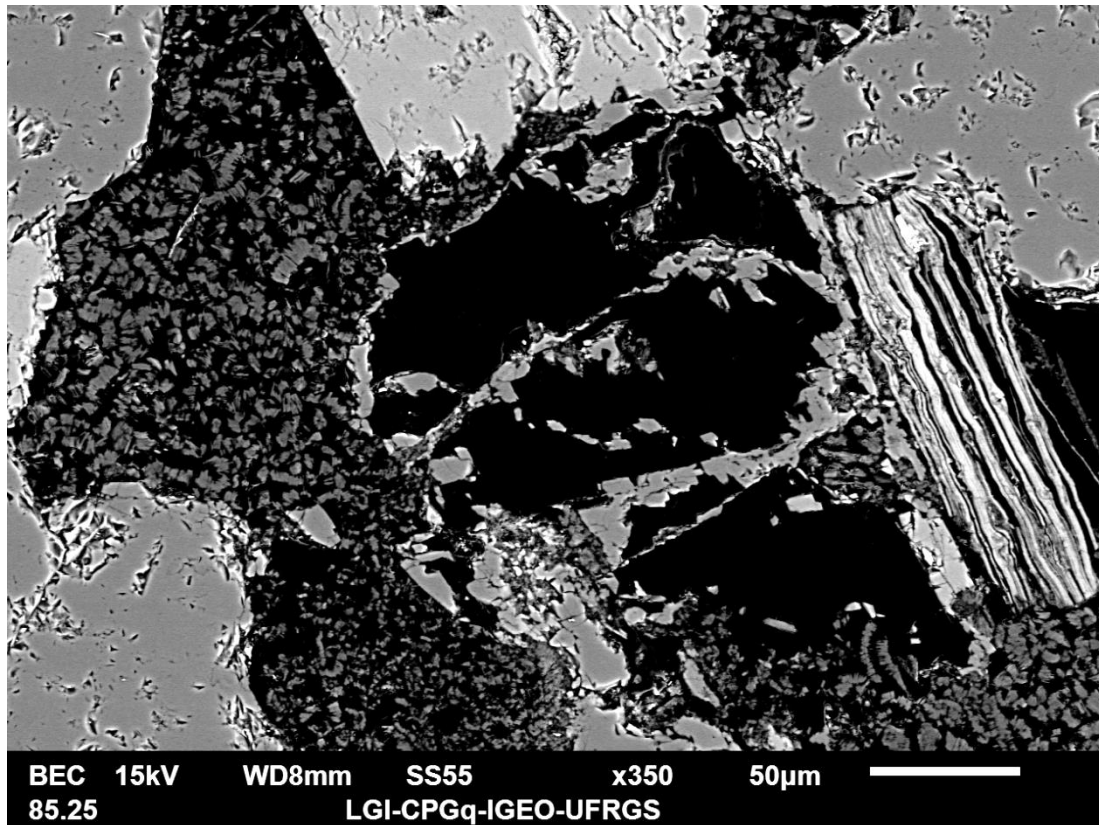
Mica expandida por caulinita e parcialmente substituída por pirita.



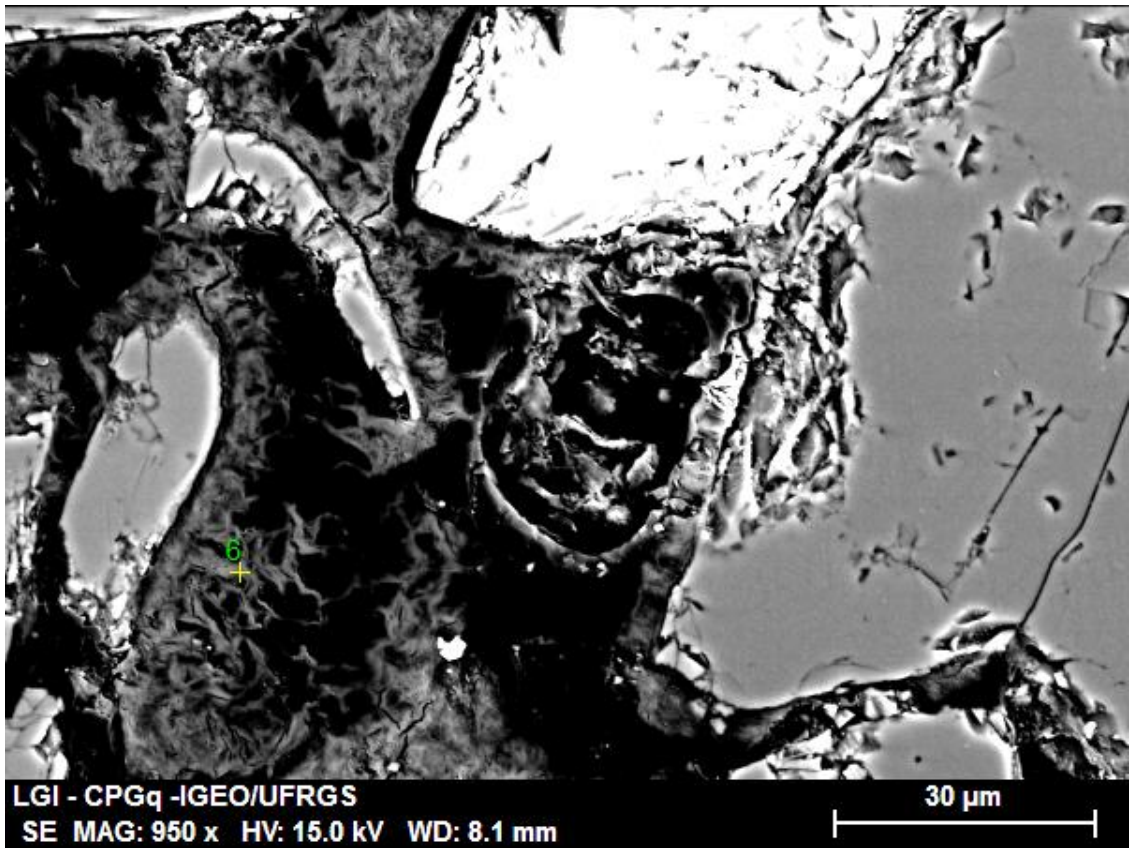
Espectro EDS da caulinita no ponto 16.

Spectrum: 16

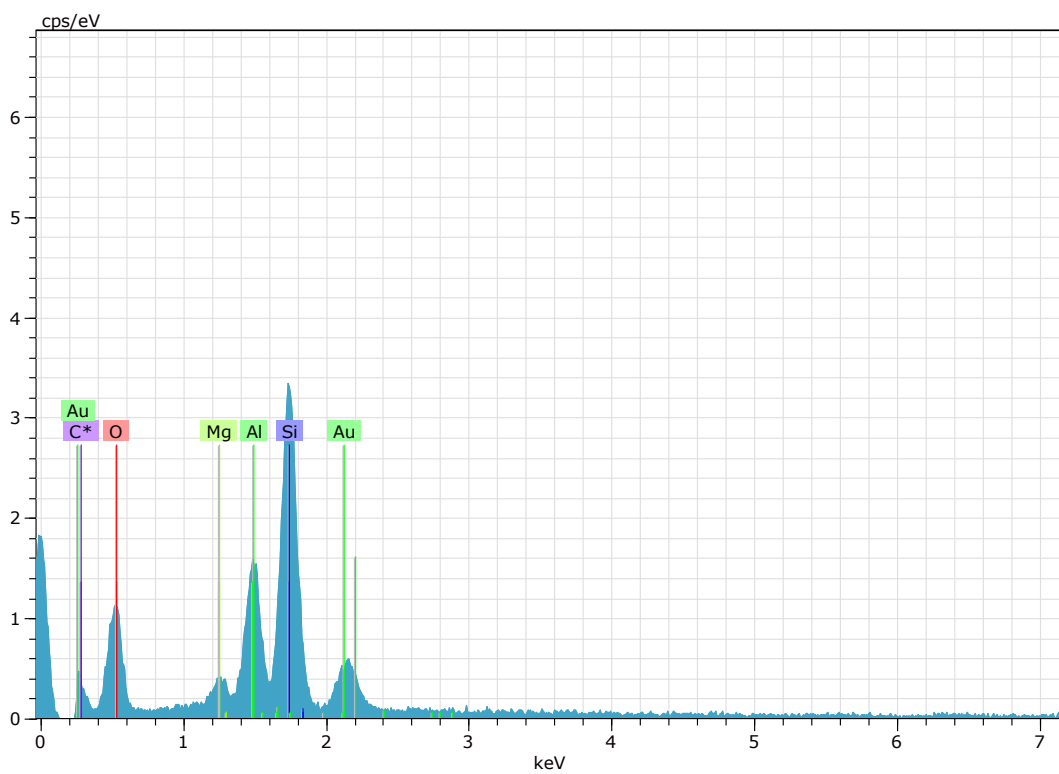
El	AN	Series	unn. C [wt.%]	norm. C [wt.%]	Atom. C [at.%]	Compound	Comp. C [wt.%]	norm. Comp. C [wt.%]	Error (1Sigma) [wt.%]
C	6	K-series	0.00	0.00	0.00		0.00	0.00	0.00
O	8	K-series	35.02	43.65	62.63		0.00	0.00	4.92
Al	13	K-series	16.54	20.62	17.54	Al2O3	38.96	31.25	0.81
Si	14	K-series	17.65	22.00	17.98	SiO2	47.07	37.76	0.78
Fe	26	K-series	0.68	0.85	0.35	FeO	1.10	0.88	0.08
Au	79	M-series	10.32	12.87	1.50		12.87	10.32	0.45
Total:			80.21	100.00	100.00				



Caulinita em *booklets* e vermicular. Feldspato dissolvido.



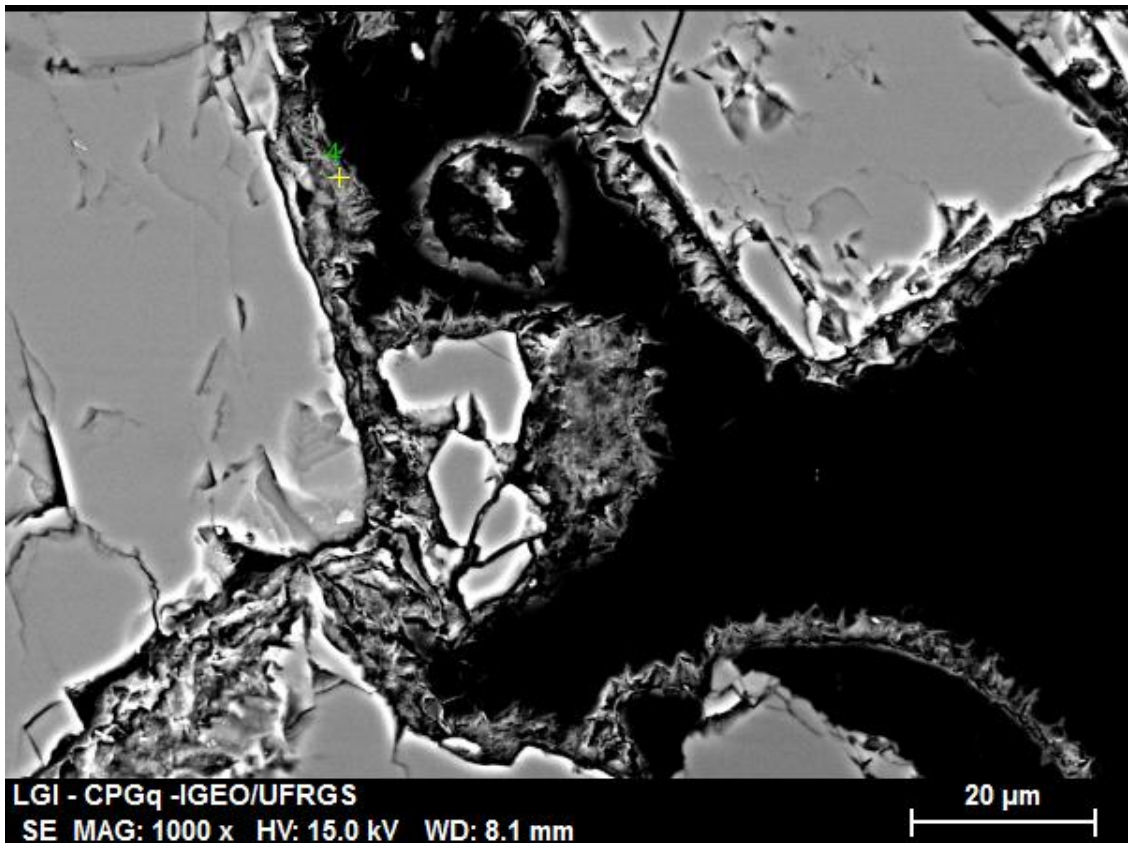
Franjas de esmectita.



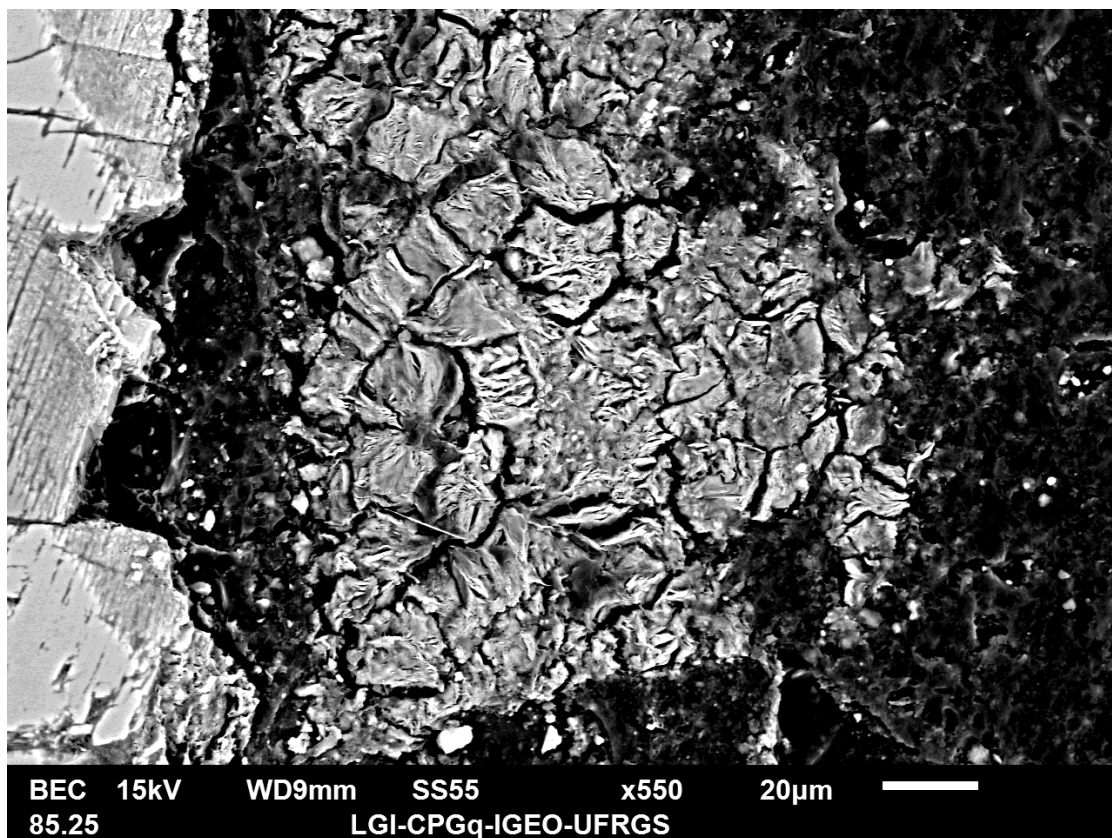
Espectro EDS da esmectita no ponto 6.

Spectrum: 6

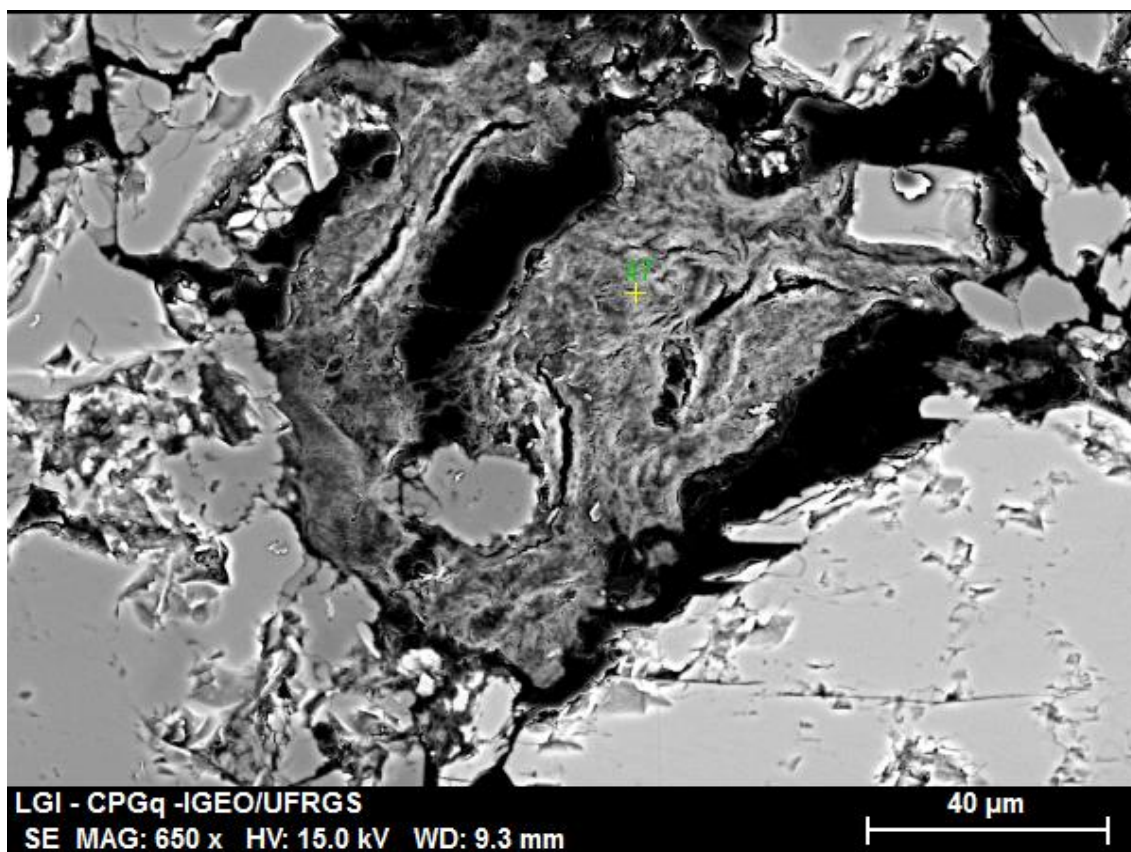
El	AN	Series	unn. C [wt.%]	norm. C [wt.%]	Atom. C [at.%]	Compound	Comp. C [wt.%]	norm. Comp. C [wt.%]	Error (1Sigma) [wt.%]
C	6	K-series	0.00	0.00	0.00		0.00	0.00	0.00
O	8	K-series	33.26	47.70	64.61		0.00	0.00	5.52
Mg	12	K-series	1.39	1.99	1.77	MgO	3.30	2.30	0.12
Al	13	K-series	7.65	10.97	8.81	Al2O3	20.73	14.45	0.41
Si	14	K-series	20.19	28.95	22.34	SiO2	61.93	43.18	0.90
Zr	40	L-series	7.25	10.40	2.47	ZrO2	14.05	9.79	0.37
Total:			69.73	100.00	100.00				



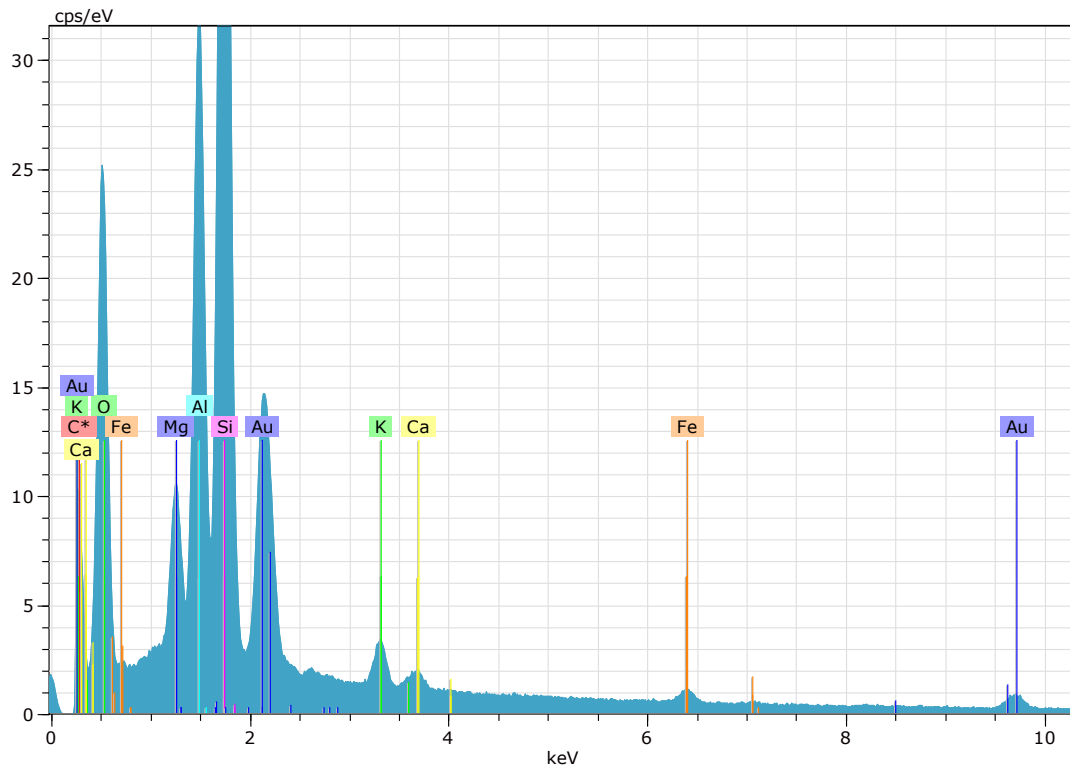
Franjas de esmectita.



Esmeclita substituindo caulinita vermicular.



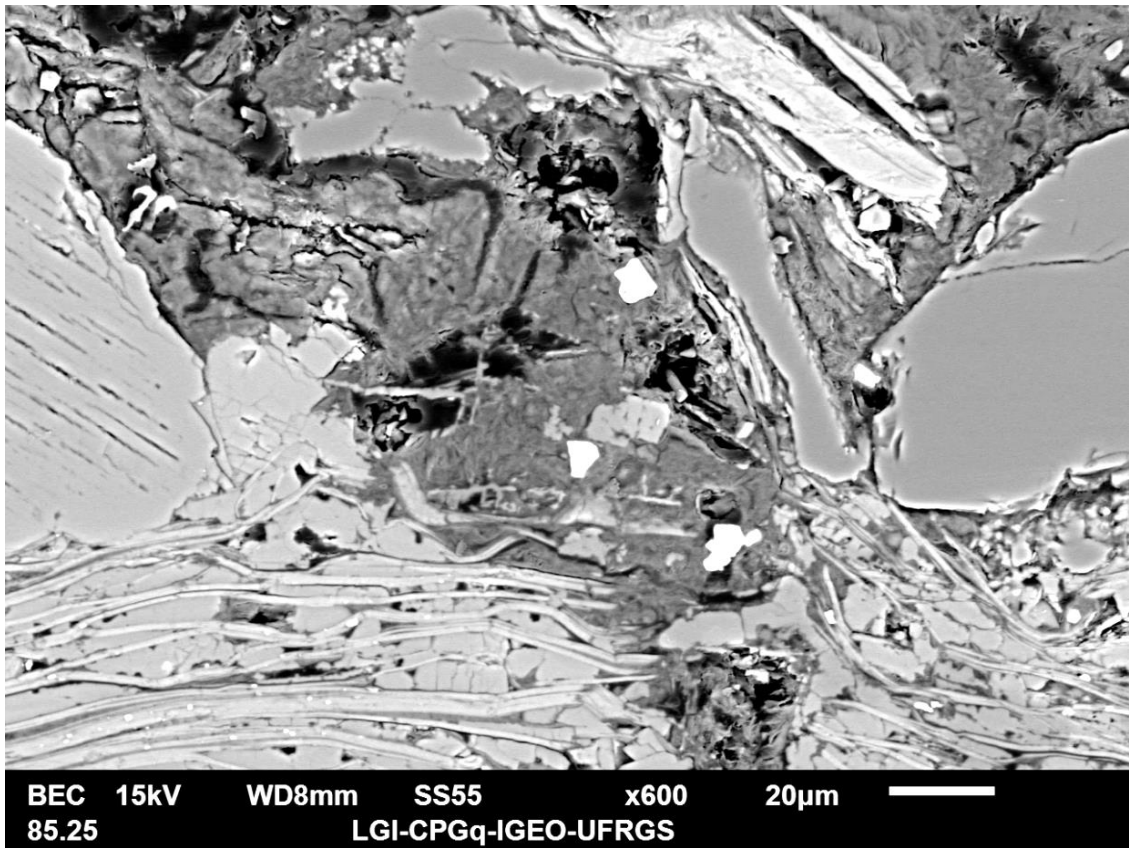
Esmeclita microcristalina substituindo grão.



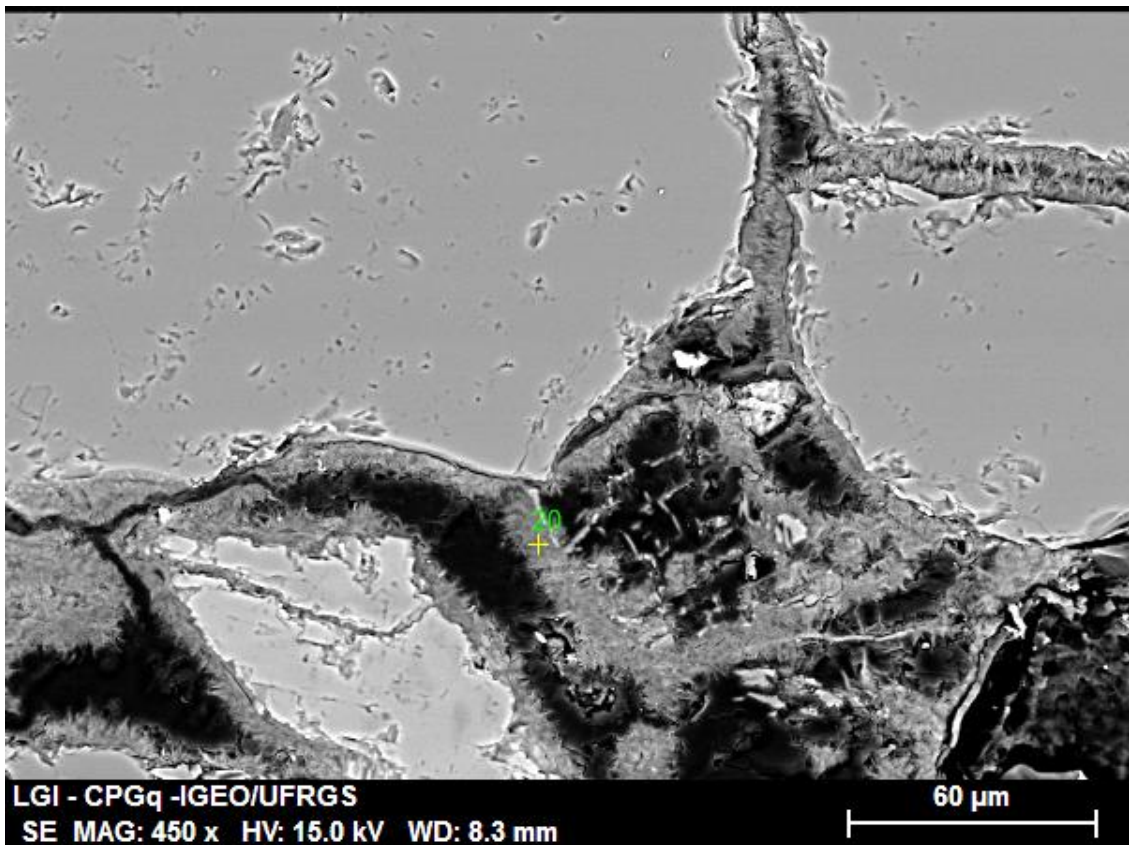
Espectro EDS da esmectita no ponto 47.

Spectrum: 47

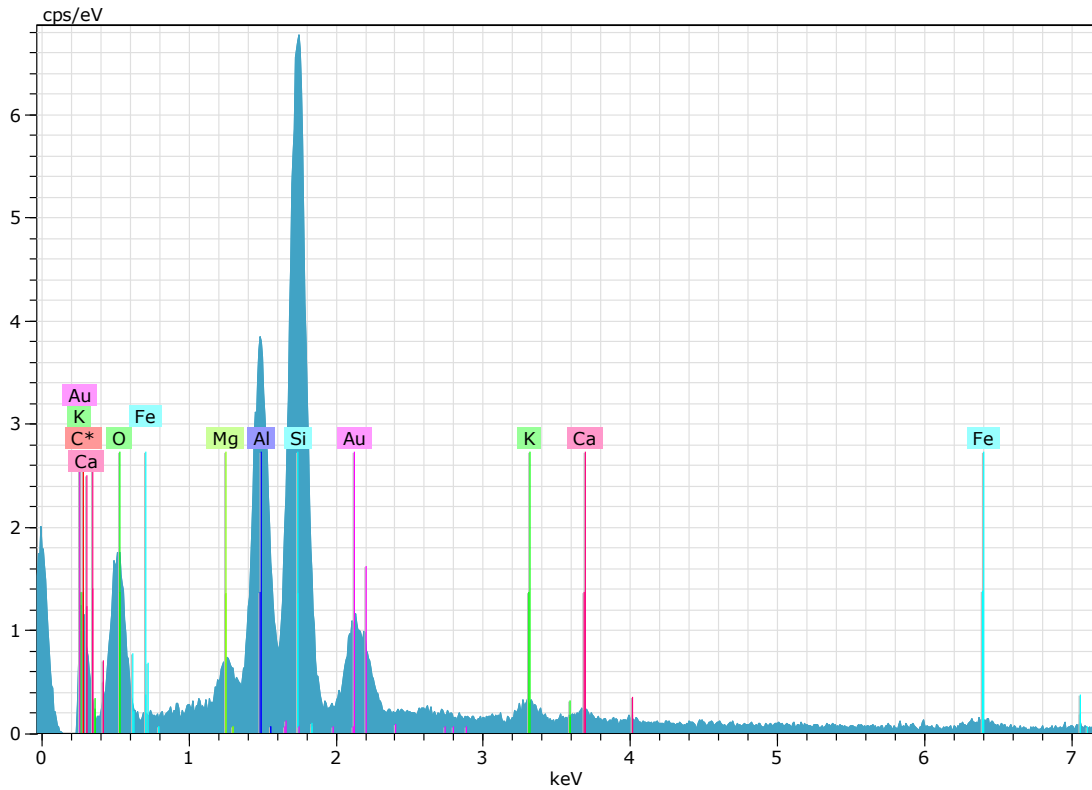
El	AN	Series	unn. C [wt.%]	norm. C [wt.%]	Atom. C [at.%]	Compound	Comp. C [wt.%]	norm. Comp. C [wt.%]	Error (1Sigma) [wt.%]
C	6	K-series	0.00	0.00	0.00		0.00	0.00	0.00
O	8	K-series	35.73	40.99	61.79		0.00	0.00	4.06
Mg	12	K-series	2.76	3.17	3.14	MgO	5.25	4.58	0.17
Al	13	K-series	9.56	10.97	9.80	Al2O3	20.73	18.06	0.47
Si	14	K-series	21.49	24.66	21.18	SiO2	52.76	45.98	0.92
K	19	K-series	1.43	1.64	1.01	K2O	1.98	1.73	0.07
Ca	20	K-series	0.59	0.68	0.41	CaO	0.95	0.83	0.05
Fe	26	K-series	1.35	1.55	0.67	FeO	2.00	1.74	0.07
Au	79	M-series	14.23	16.33	2.00		16.33	14.23	0.56
Total:			87.15	100.00	100.00				



Calcita expandindo biotita. Esmeclita substituindo grãos e preenchendo a porosidade intergranular.



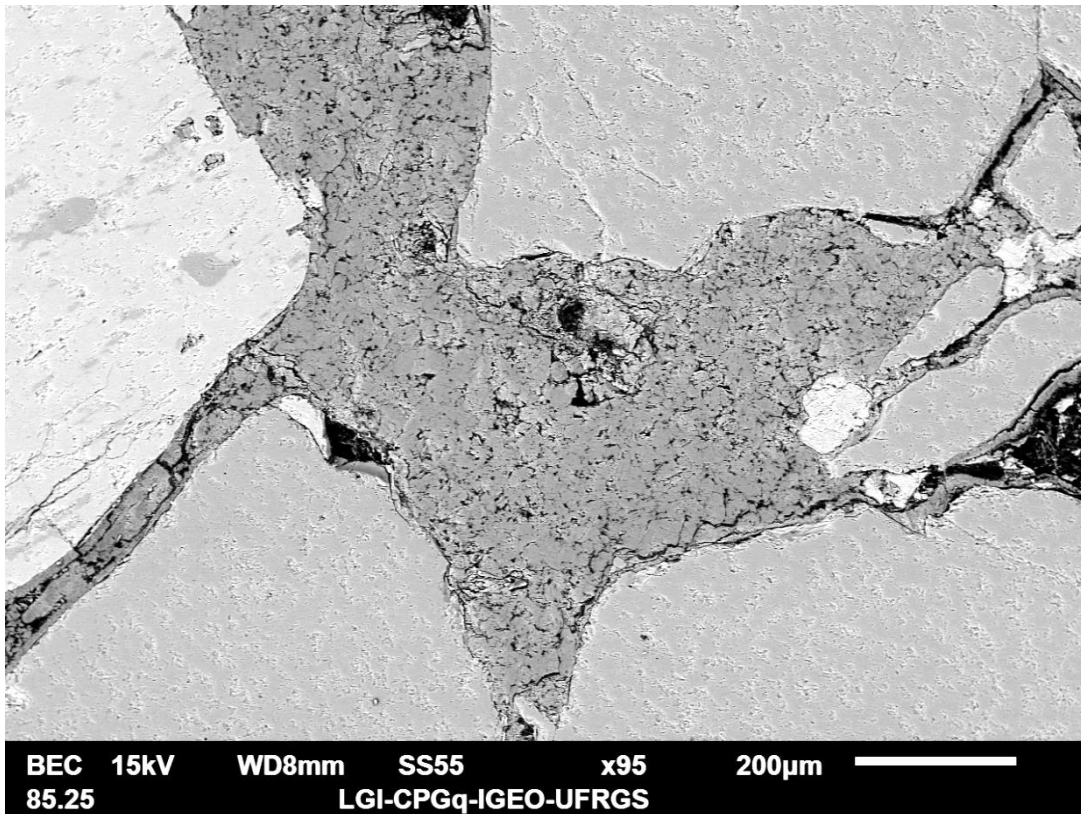
Franja de esmectita.



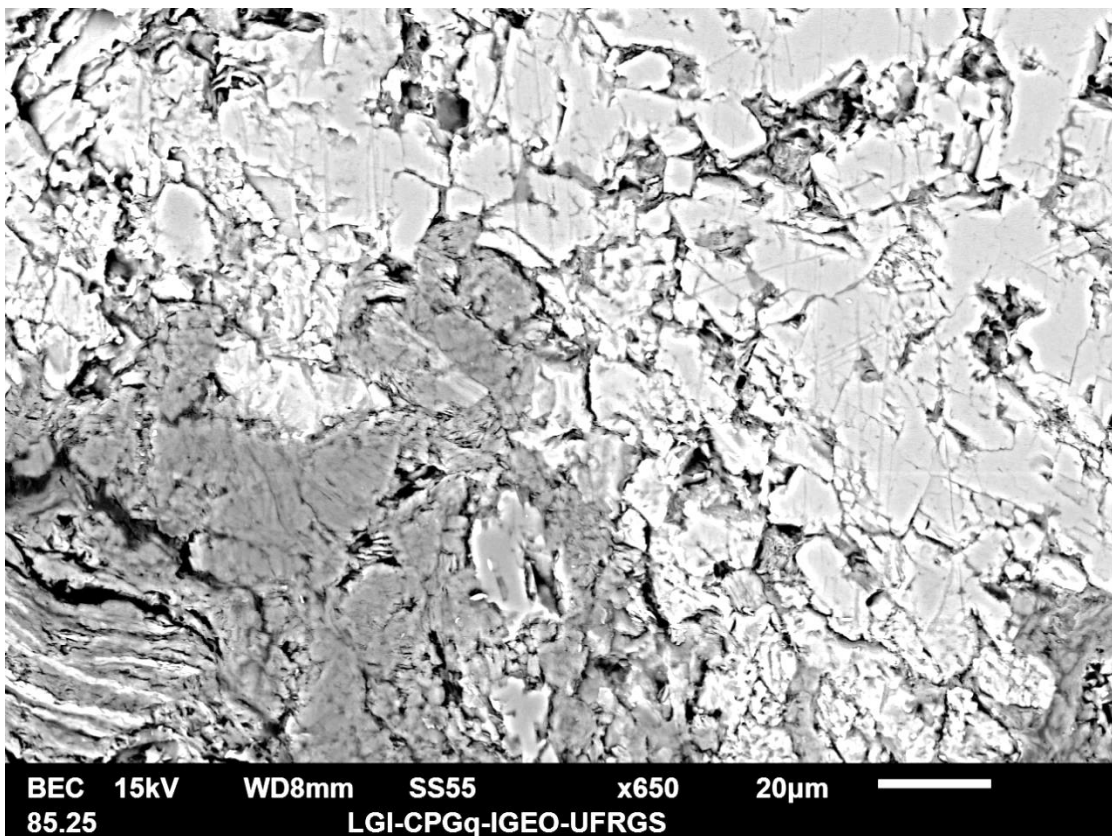
Espectro de franja de esmectita no ponto 20.

Spectrum: 20

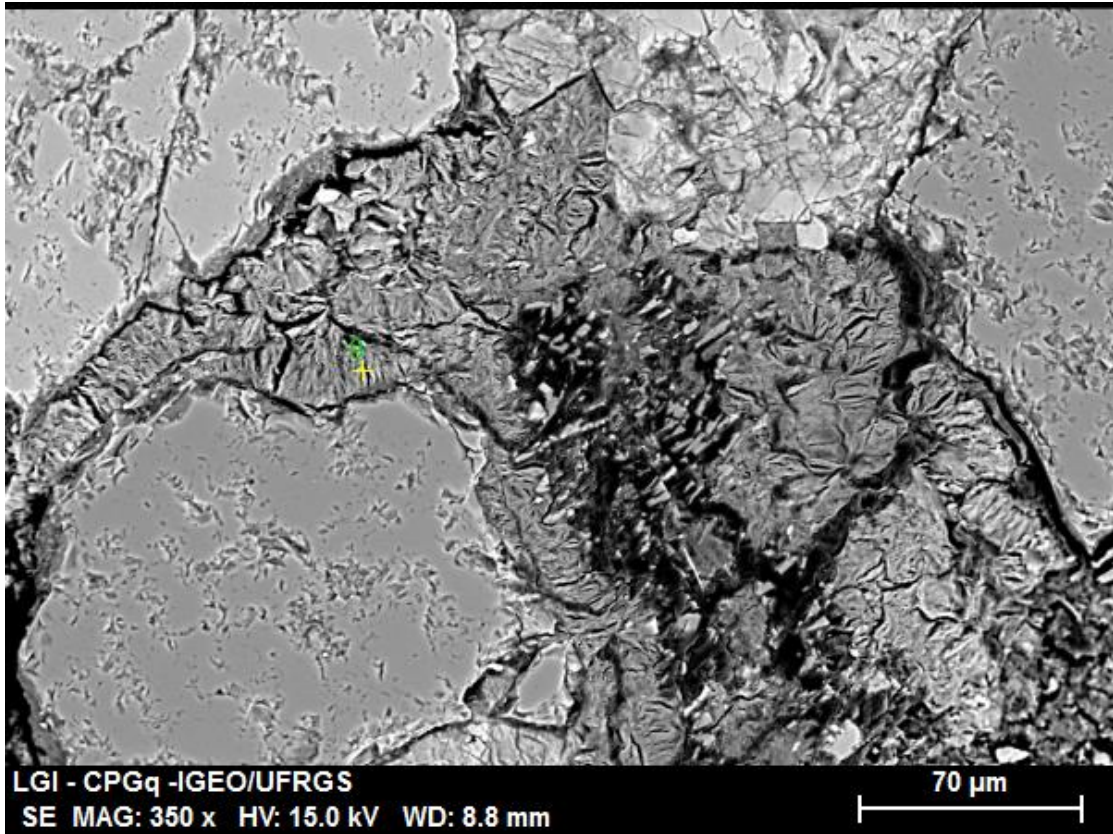
El	AN	Series	unn. C [wt.%]	norm. C [wt.%]	Atom. C [at.%]	Compound	Comp. C [wt.%]	norm. Comp. C [wt.%]	Error (1Sigma) [wt.%]
C	6	K-series	0.00	0.00	0.00		0.00	0.00	0.00
O	8	K-series	30.26	43.52	62.62		0.00	0.00	4.68
Mg	12	K-series	1.14	1.64	1.56	MgO	2.72	1.89	0.10
Al	13	K-series	8.79	12.65	10.79	Al ₂ O ₃	23.89	16.62	0.45
Si	14	K-series	18.30	26.31	21.57	SiO ₂	56.28	39.14	0.80
K	19	K-series	0.86	1.24	0.73	K ₂ O	1.49	1.04	0.07
Ca	20	K-series	0.48	0.69	0.40	CaO	0.97	0.67	0.06
Fe	26	K-series	1.67	2.40	0.99	FeO	3.08	2.14	0.12
Au	79	M-series	8.04	11.56	1.35		11.56	8.04	0.36
Total:			69.54	100.00	100.00				



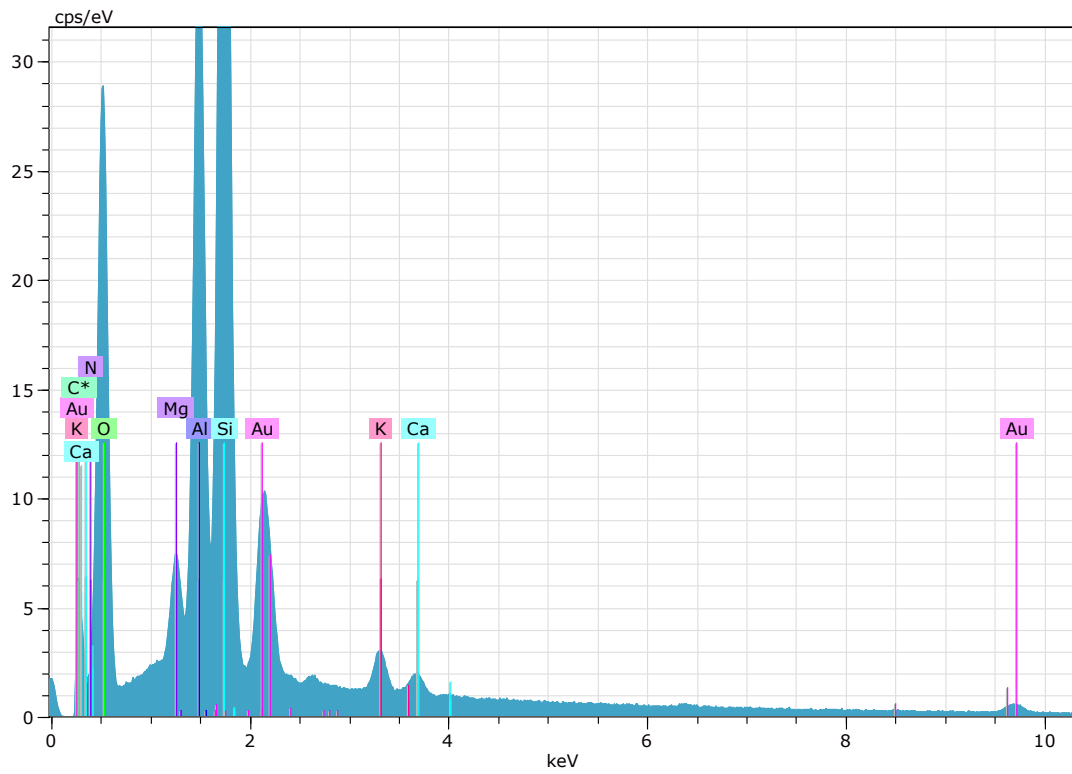
Caulinita substituindo grão e preenchendo a porosidade intergranular. Cutículas de esmectita cobrindo grãos.



Calcita substituindo caulinita.



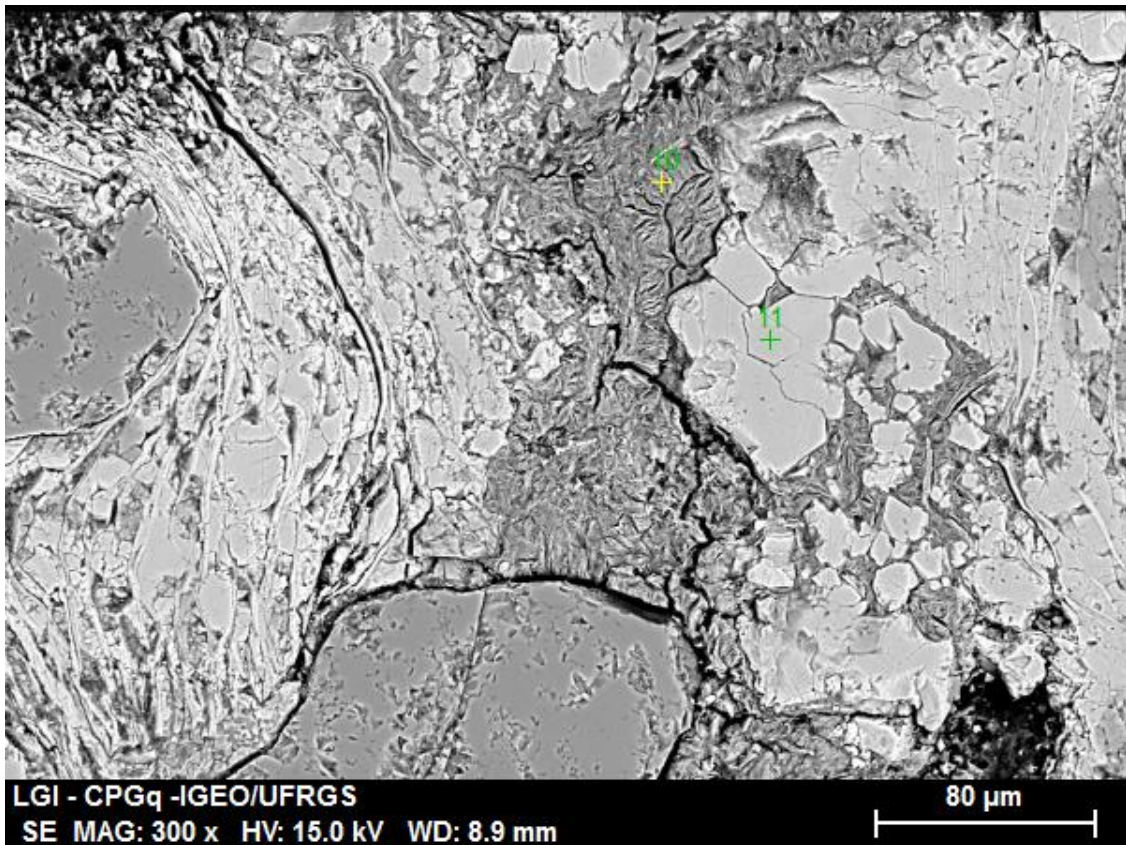
Franjas de esmectita.



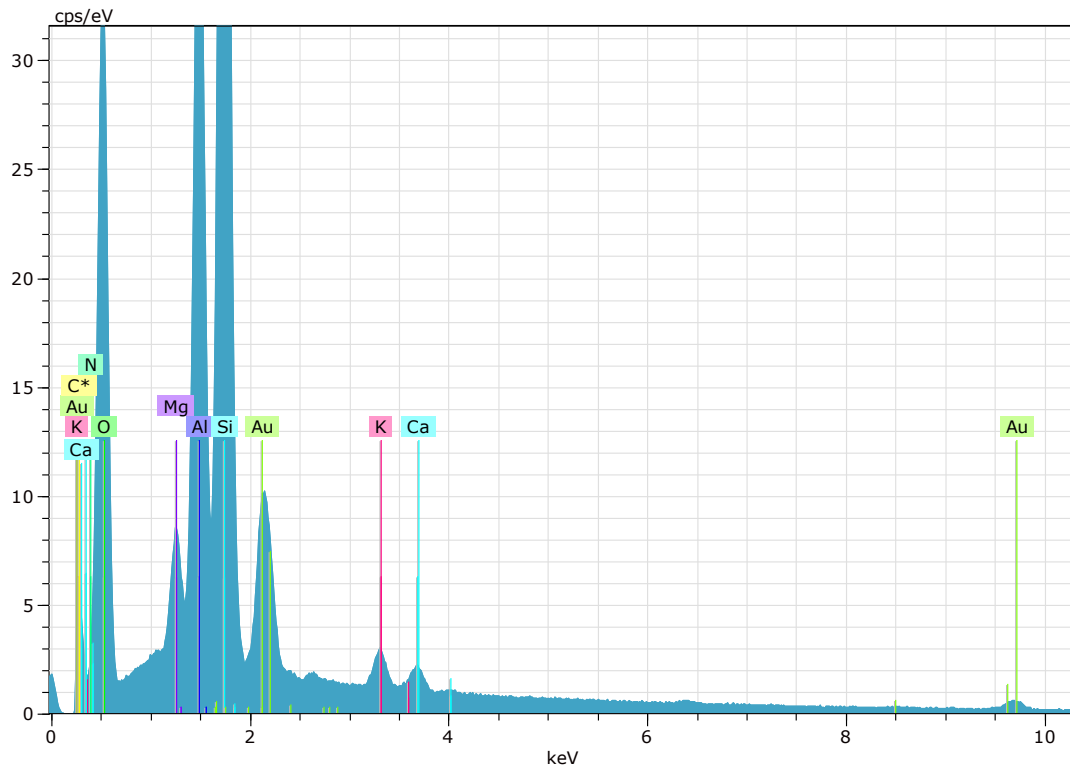
Espectro EDS da esmectita no ponto 9.

Spectrum: 9

El	AN	Series	unn. C [wt.%]	norm. C [wt.%]	Atom. C [at.%]	Compound	Comp. C [wt.%]	norm. Comp. C [wt.%]	Error (1Sigma) [wt.%]
C	6	K-series	0.00	0.00	0.00		0.00	0.00	0.00
N	7	K-series	8.47	10.67	16.28		10.67	8.47	1.09
O	8	K-series	31.17	39.23	52.41		0.00	0.00	3.43
Mg	12	K-series	1.44	1.81	1.59	MgO	3.00	2.38	0.10
Al	13	K-series	9.54	12.01	9.51	Al ₂ O ₃	22.69	18.03	0.47
Si	14	K-series	18.66	23.49	17.87	SiO ₂	50.25	39.92	0.80
K	19	K-series	1.14	1.43	0.78	K ₂ O	1.72	1.37	0.06
Ca	20	K-series	0.60	0.76	0.41	CaO	1.06	0.85	0.04
Au	79	M-series	8.43	10.61	1.15		10.61	8.43	0.34
Total:			79.45	100.00	100.00				



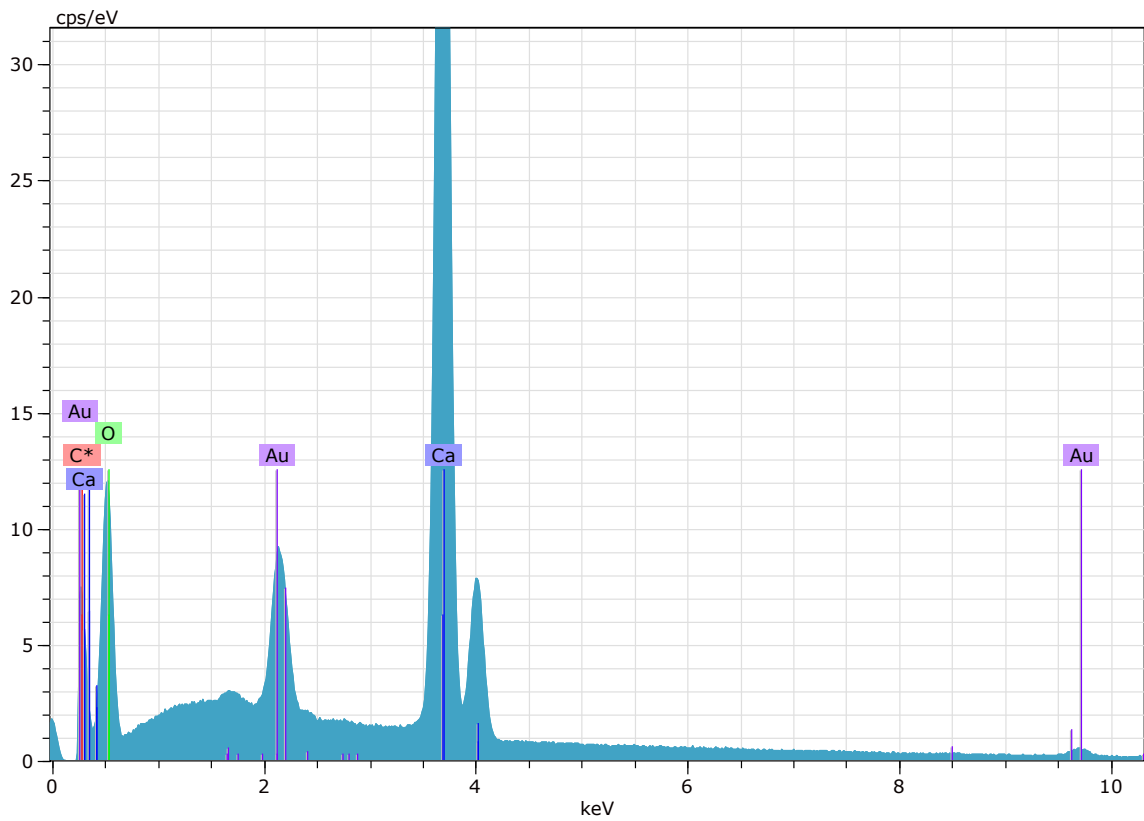
Calcita expandindo e substituindo biotita e, substituindo esmectita.



Espectro EDS da esmectita no ponto 10.

Spectrum: 10

El	AN	Series	unn. C [wt.%]	norm. C [wt.%]	Atom. C [at.%]	Compound	Comp. C [wt.%]	norm. Comp. C [wt.%]	Error (1Sigma) [wt.%]
C	6	K-series	0.00	0.00	0.00		0.00	0.00	0.00
N	7	K-series	8.21	10.37	15.64		10.37	8.21	1.05
O	8	K-series	31.77	40.11	52.98		0.00	0.00	3.47
Mg	12	K-series	1.42	1.79	1.56	MgO	2.97	2.35	0.10
Al	13	K-series	9.70	12.25	9.60	Al ₂ O ₃	23.15	18.34	0.47
Si	14	K-series	19.08	24.09	18.13	SiO ₂	51.54	40.83	0.82
K	19	K-series	0.94	1.19	0.64	K ₂ O	1.44	1.14	0.06
Ca	20	K-series	0.67	0.85	0.45	CaO	1.18	0.94	0.05
Au	79	M-series	7.41	9.35	1.00		9.35	7.41	0.30
Total:			79.21	100.00	100.00				

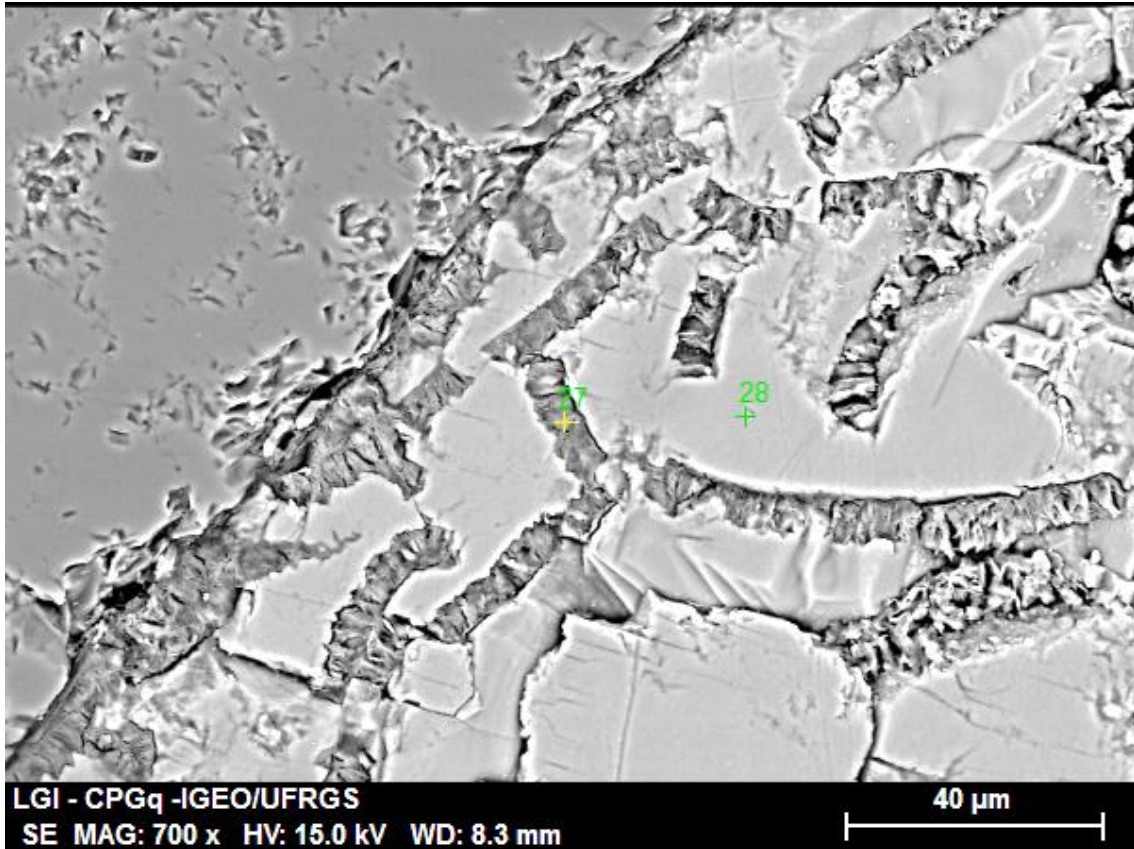


Espectro EDS da calcita no ponto 11.

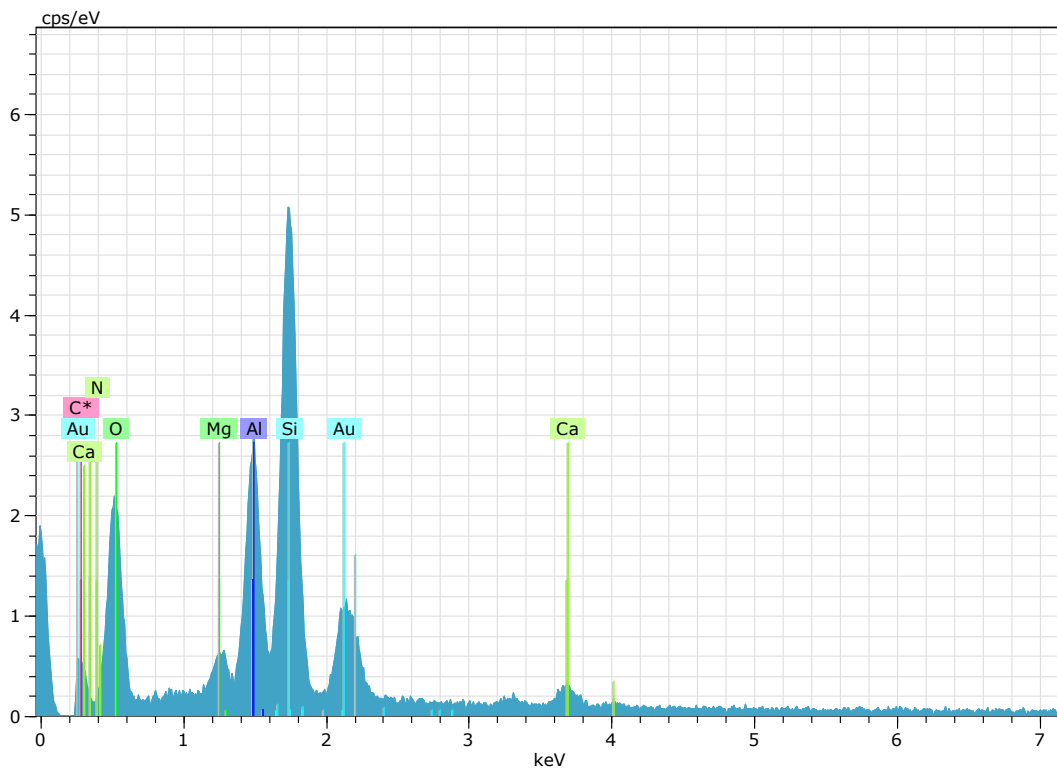
Spectrum: 11

Spectrum: 11

El	AN	Series	unn. [wt.%]	C norm. [wt.%]	C Atom. [at.%]	Compound	Comp. [wt.%]	C norm. [wt.%]	Comp. [wt.%]	Error (1Sigma) [wt.%]
C	6	K-series	0.00	0.00	0.00		0.00	0.00	0.00	0.00
O	8	K-series	19.14	25.83	49.27		0.00	0.00	0.00	2.21
Ca	20	K-series	47.94	64.71	49.27	CaO	90.54	67.08	67.08	1.45
Au	79	M-series	7.01	9.46	1.47		9.46	7.01	7.01	0.29
Total:			74.09	100.00	100.00					



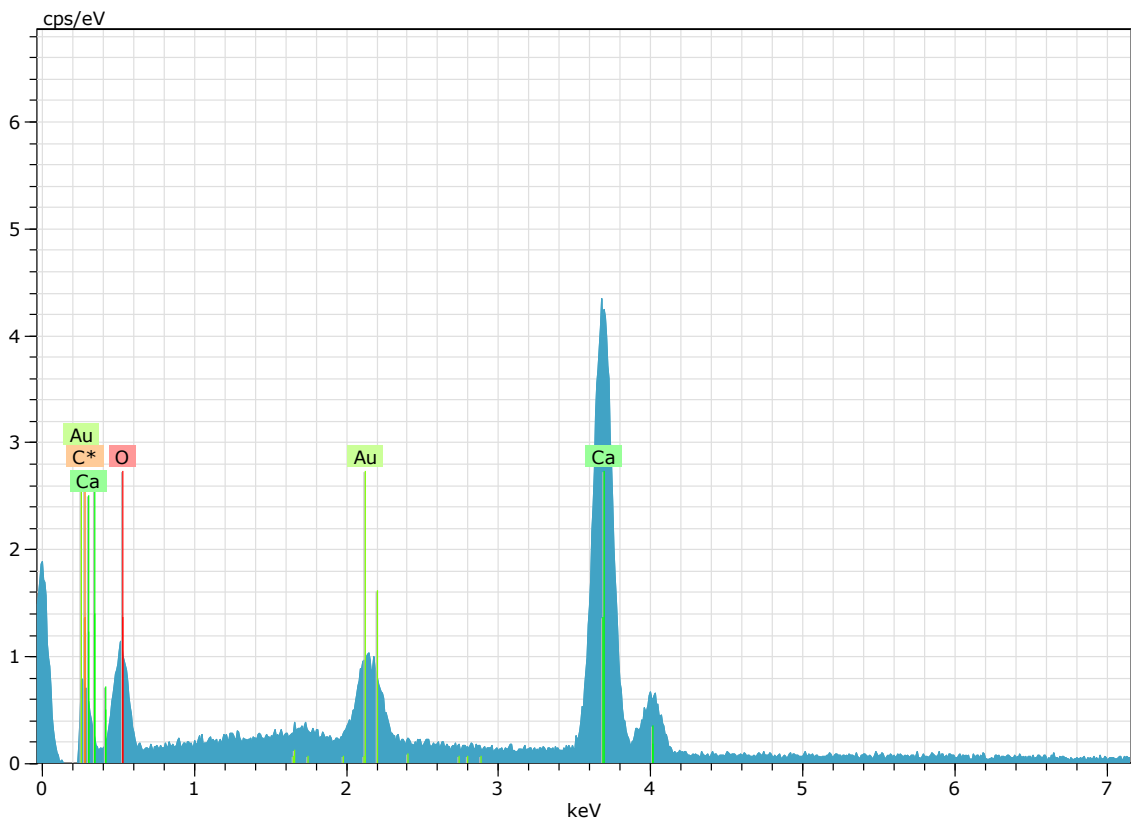
Calcita cobrindo e substituindo franjas de esmectita.



Espectro EDS da esmectita no ponto 27.

Spectrum: 27

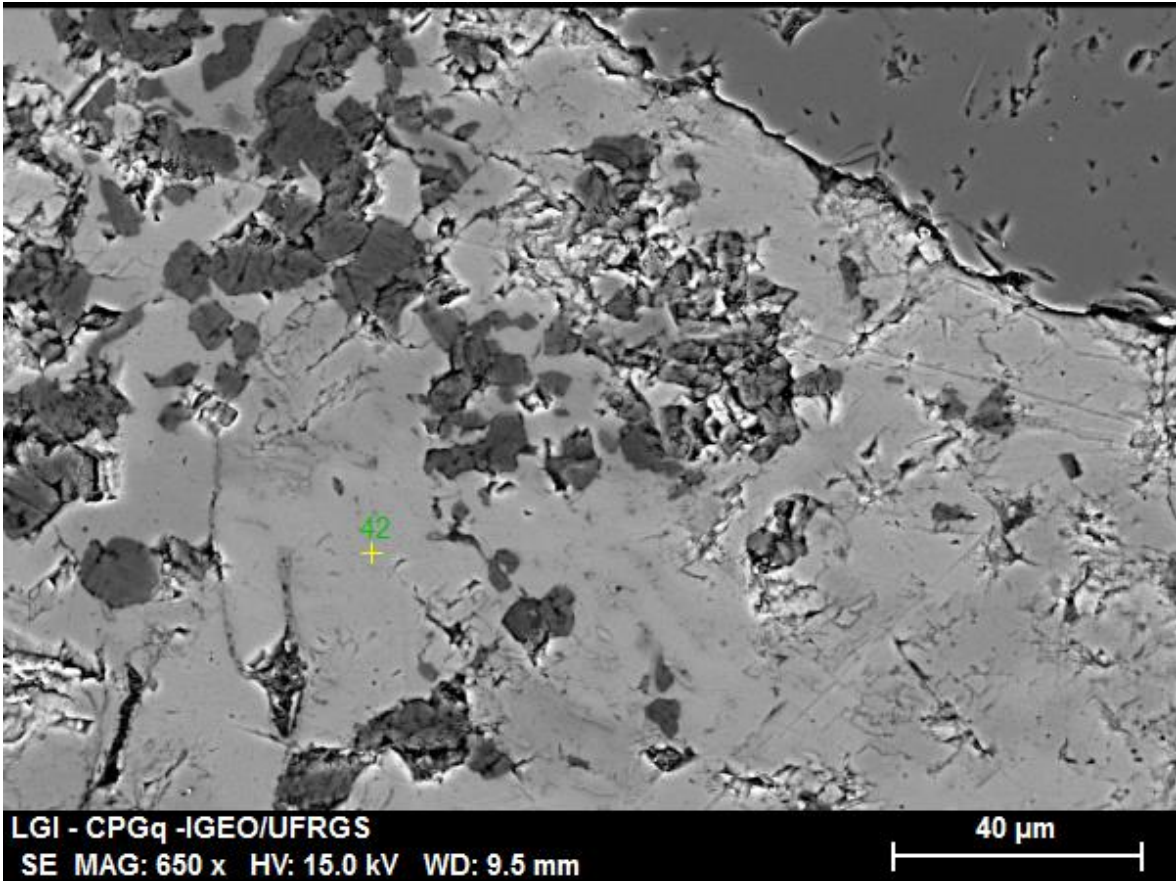
El	AN	Series	unn. C [wt.%]	norm. C [wt.%]	Atom. C [at.%]	Compound	Comp. C [wt.%]	norm. Comp. C [wt.%]	Error (1Sigma) [wt.%]
C	6	K-series	0.00	0.00	0.00		0.00	0.00	0.00
N	7	K-series	5.90	9.02	14.41		9.02	5.90	1.38
O	8	K-series	25.02	38.28	53.51		0.00	0.00	3.69
Mg	12	K-series	1.10	1.68	1.54	MgO	2.78	1.82	0.10
Al	13	K-series	6.94	10.62	8.80	Al2O3	20.07	13.11	0.36
Si	14	K-series	15.30	23.42	18.65	SiO2	50.10	32.74	0.68
Ca	20	K-series	1.72	2.63	1.47	CaO	3.68	2.40	0.11
Au	79	M-series	9.37	14.35	1.63		14.35	9.37	0.42
Total:			65.35	100.00	100.00				



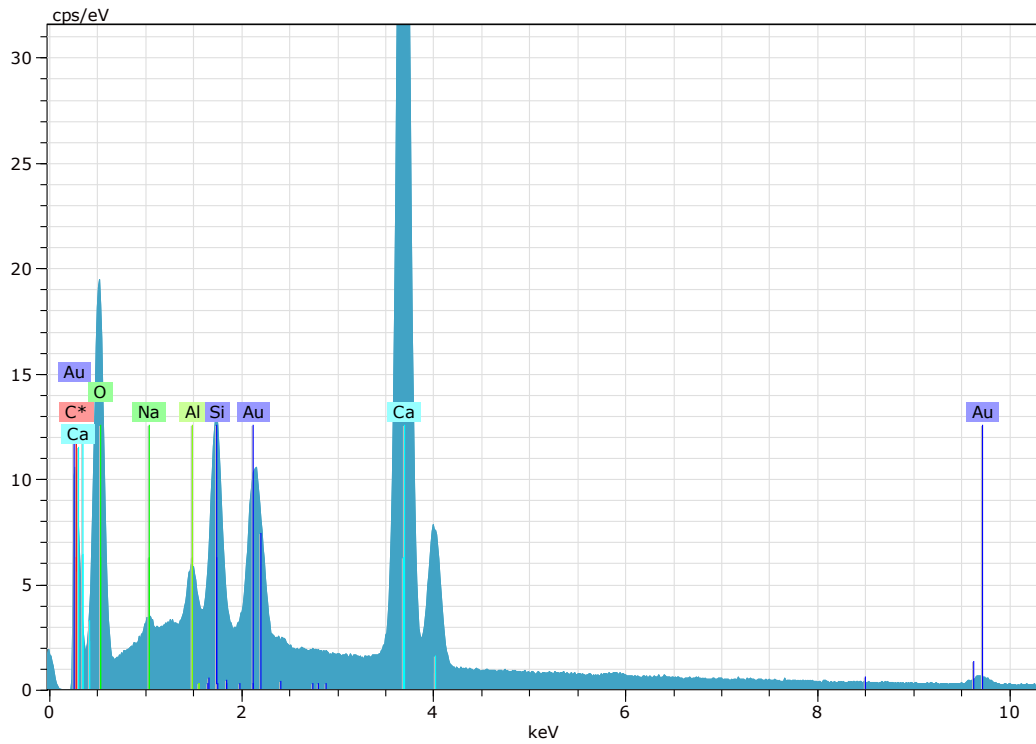
Espectro EDS da calcita no ponto 28.

Spectrum: 28

El	AN	Series	unn. C [wt.%]	norm. C [wt.%]	Atom. C [at.%]	Compound	Comp. C [wt.%]	norm. Comp. C [wt.%]	Error (1Sigma) [wt.%]
C	6	K-series	0.00	0.00	0.00		0.00	0.00	0.00
O	8	K-series	16.23	24.47	48.85		0.00	0.00	2.74
Ca	20	K-series	40.66	61.29	48.85	CaO	85.76	56.90	1.28
Au	79	M-series	9.45	14.24	2.31		14.24	9.45	0.42
Total:			66.35	100.00	100.00				



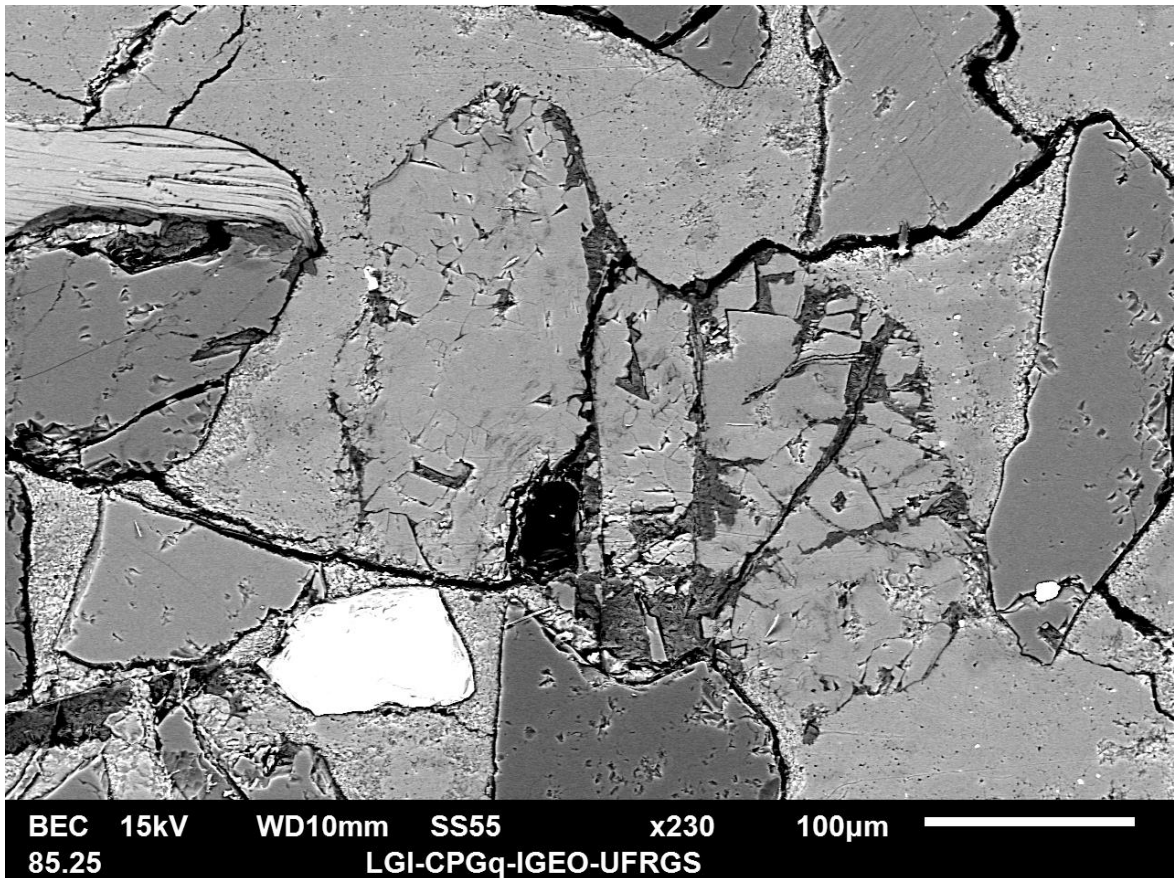
Calcita substituído caulinita vermicular.



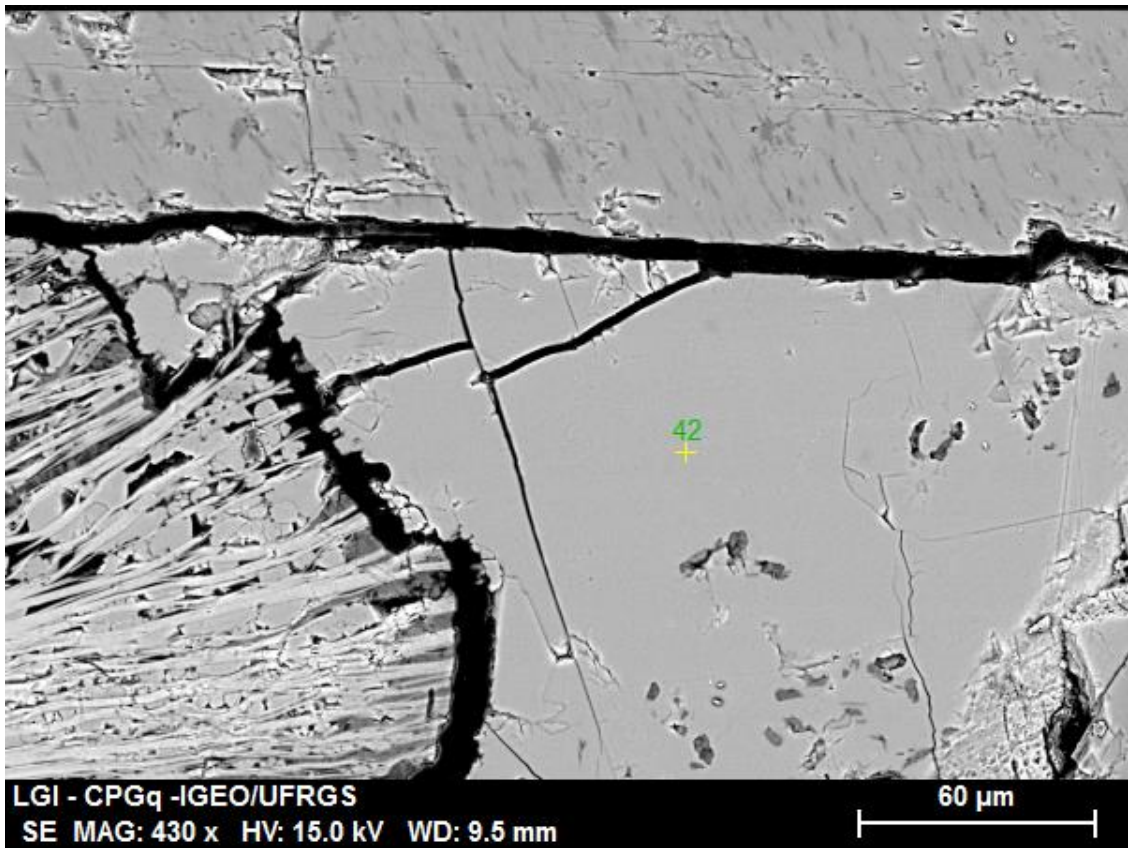
EDS da calcita analisada no ponto 42.

Spectrum: 42

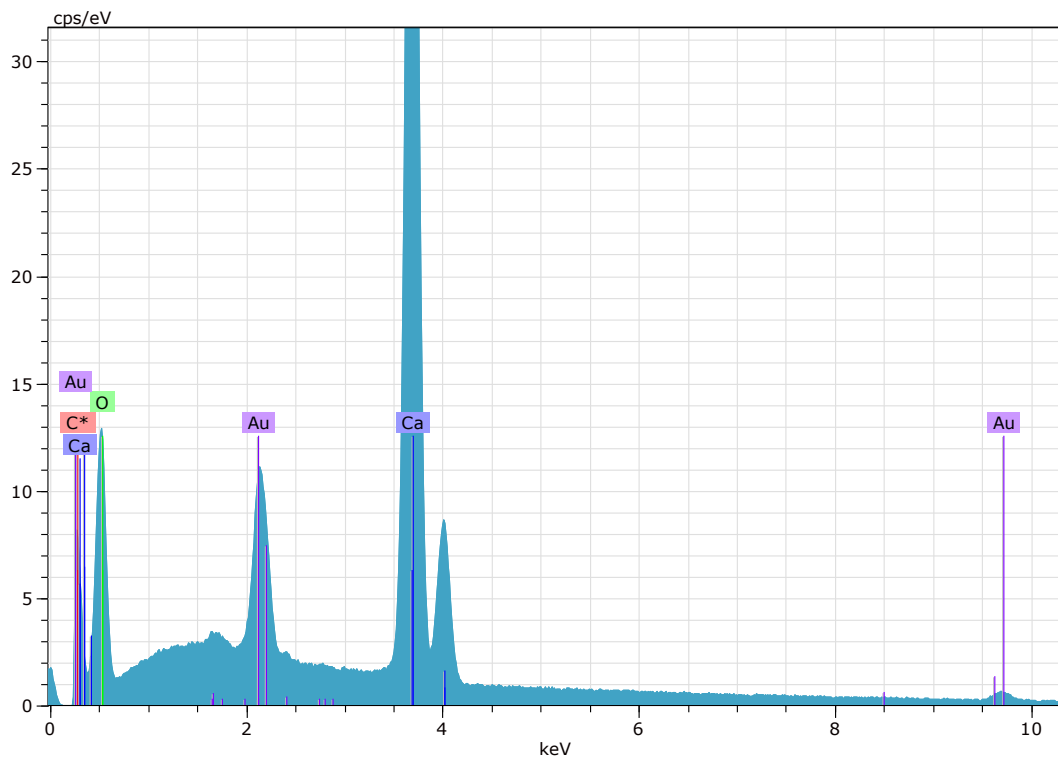
El	AN	Series	unn. C [wt.%]	norm. C [wt.%]	Atom. C [at.%]	Compound	Comp. C [wt.%]	norm. Comp. C [wt.%]	Error (1Sigma) [wt.%]
C	6	K-series	0.00	0.00	0.00		0.00	0.00	0.00
O	8	K-series	22.29	28.65	51.73		0.00	0.00	2.53
Na	11	K-series	0.95	1.23	1.54	Na2O	1.65	1.29	0.09
Al	13	K-series	1.24	1.59	1.70	Al2O3	3.01	2.34	0.08
Si	14	K-series	3.67	4.72	4.85	SiO2	10.10	7.85	0.18
Ca	20	K-series	41.77	53.69	38.69	CaO	75.12	58.44	1.27
Au	79	M-series	7.87	10.12	1.48		10.12	7.87	0.32
Total:			77.80	100.00	100.00				



Calcita substituindo grão.



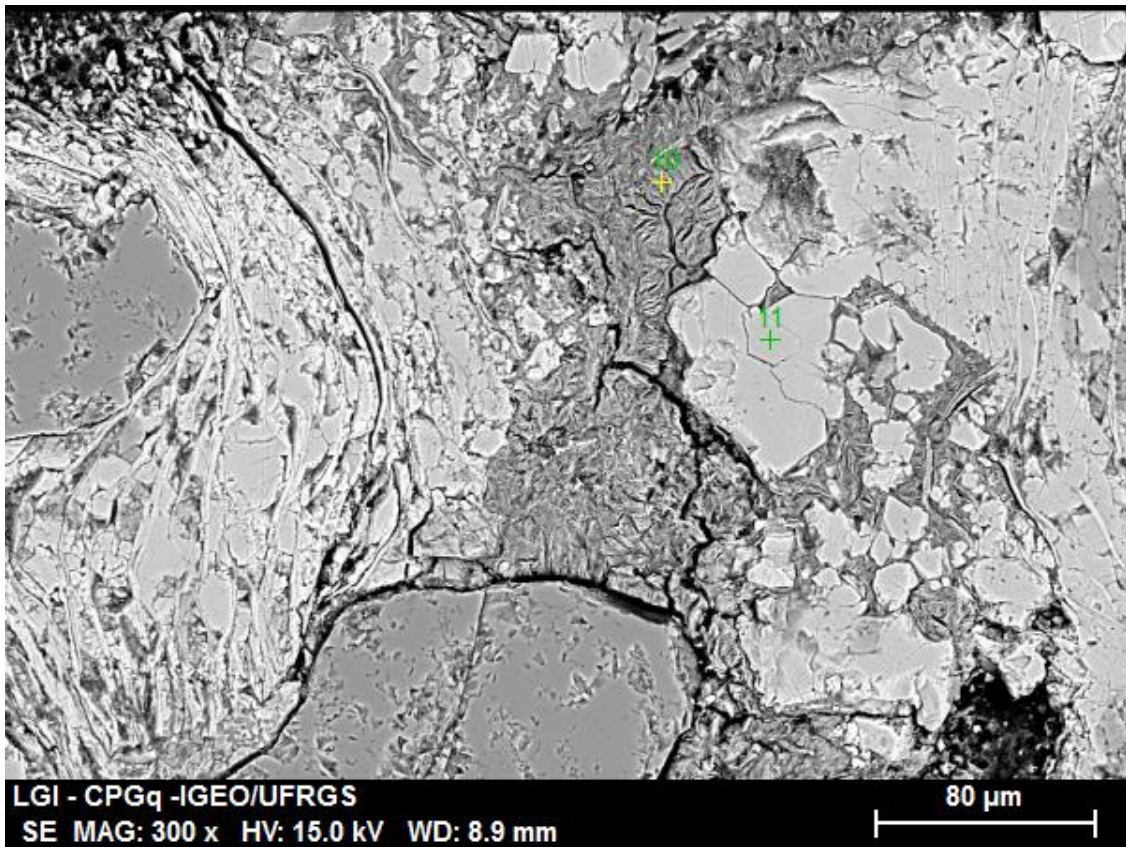
Calcita preenchendo a porosidade intergranular, substituindo caulinita e expandindo micas.



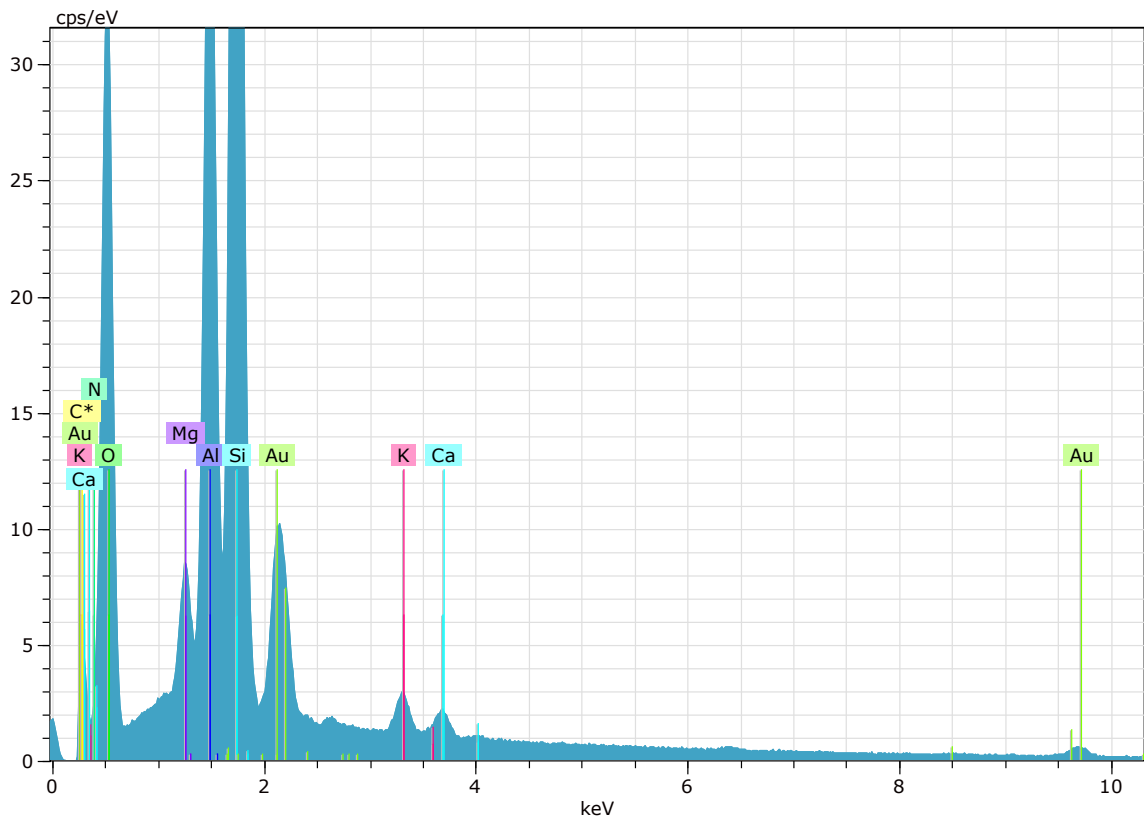
EDS da calcita analisada no ponto 42.

Spectrum: 42

El	AN	Series	unn. C [wt.%]	norm. C [wt.%]	Atom. C [at.%]	Compound	Comp. C [wt.%]	norm. Comp. C [wt.%]	Error (1Sigma) [wt.%]
C	6	K-series	0.00	0.00	0.00		0.00	0.00	0.00
O	8	K-series	19.19	25.49	49.16		0.00	0.00	2.20
Ca	20	K-series	48.06	63.85	49.16	CaO	89.33	67.25	1.45
Au	79	M-series	8.03	10.67	1.67		10.67	8.03	0.33
Total:			75.28	100.00	100.00				



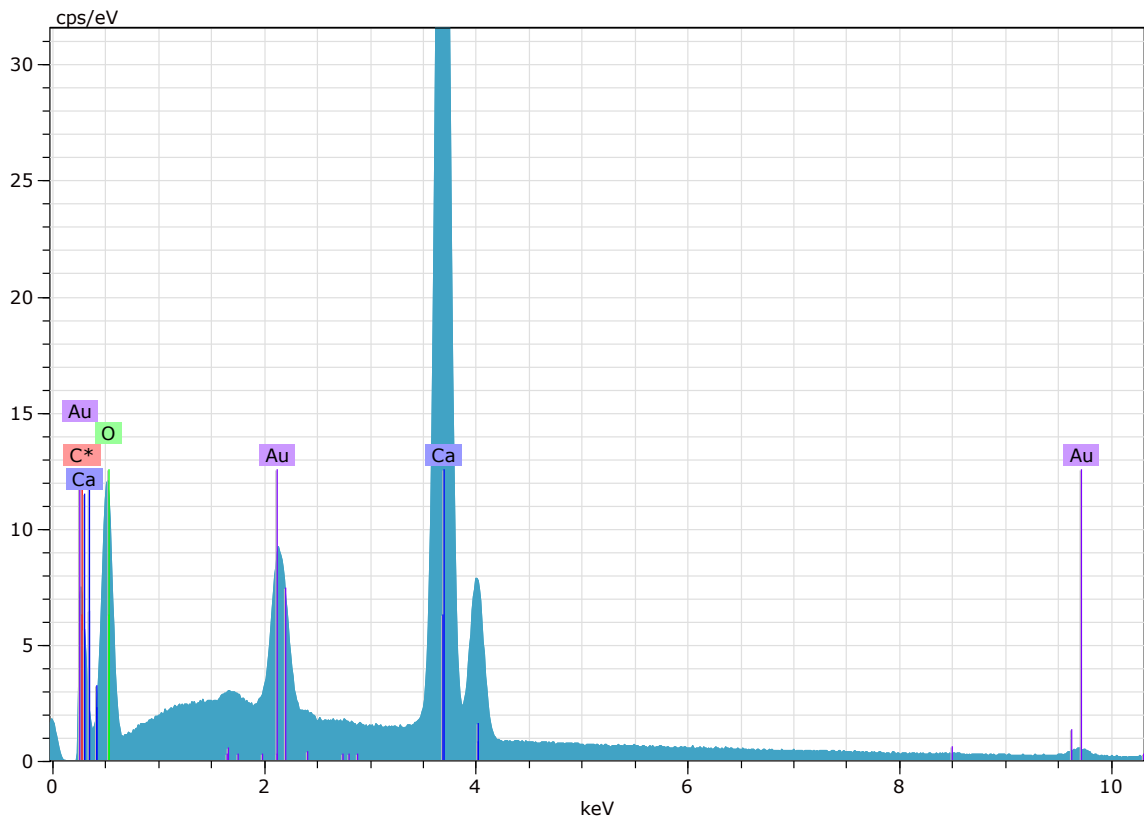
Calcita expandindo e substituindo biotita e esmectita.



EDS da franja de esmectita analisada no ponto 10.

Spectrum: 10

El	AN	Series	unn. C [wt.%]	norm. C [wt.%]	Atom. C [at.%]	Compound	Comp. C [wt.%]	norm. Comp. C [wt.%]	Error (1Sigma) [wt.%]
C	6	K-series	0.00	0.00	0.00		0.00	0.00	0.00
N	7	K-series	8.21	10.37	15.64		10.37	8.21	1.05
O	8	K-series	31.77	40.11	52.98		0.00	0.00	3.47
Mg	12	K-series	1.42	1.79	1.56	MgO	2.97	2.35	0.10
Al	13	K-series	9.70	12.25	9.60	Al2O3	23.15	18.34	0.47
Si	14	K-series	19.08	24.09	18.13	SiO2	51.54	40.83	0.82
K	19	K-series	0.94	1.19	0.64	K2O	1.44	1.14	0.06
Ca	20	K-series	0.67	0.85	0.45	CaO	1.18	0.94	0.05
Au	79	M-series	7.41	9.35	1.00		9.35	7.41	0.30
Total:			79.21	100.00	100.00				



EDS da franja de esmectita analisada no ponto 11.

Spectrum: 11

El	AN	Series	unn. [wt.%]	norm. [wt.%]	Atom. [at.%]	Compound	Comp. [wt.%]	norm. [wt.%]	Comp. [wt.%]	Error (1Sigma) [wt.%]
C	6	K-series	0.00	0.00	0.00		0.00	0.00	0.00	0.00
O	8	K-series	19.14	25.83	49.27		0.00	0.00	0.00	2.21
Ca	20	K-series	47.94	64.71	49.27	CaO	90.54	67.08	67.08	1.45
Au	79	M-series	7.01	9.46	1.47		9.46	7.01	7.01	0.29
Total:			74.09	100.00	100.00					