



FUNCTIONALITY AND DESCENDING INHIBITORY SYSTEM OF PAIN IN PATIENTS WITH FIBROMYALGIA



Mariane Schäffer Castro¹, Andressa de Souza¹

¹La Salle University – Post Graduate Program in Health and Human Development



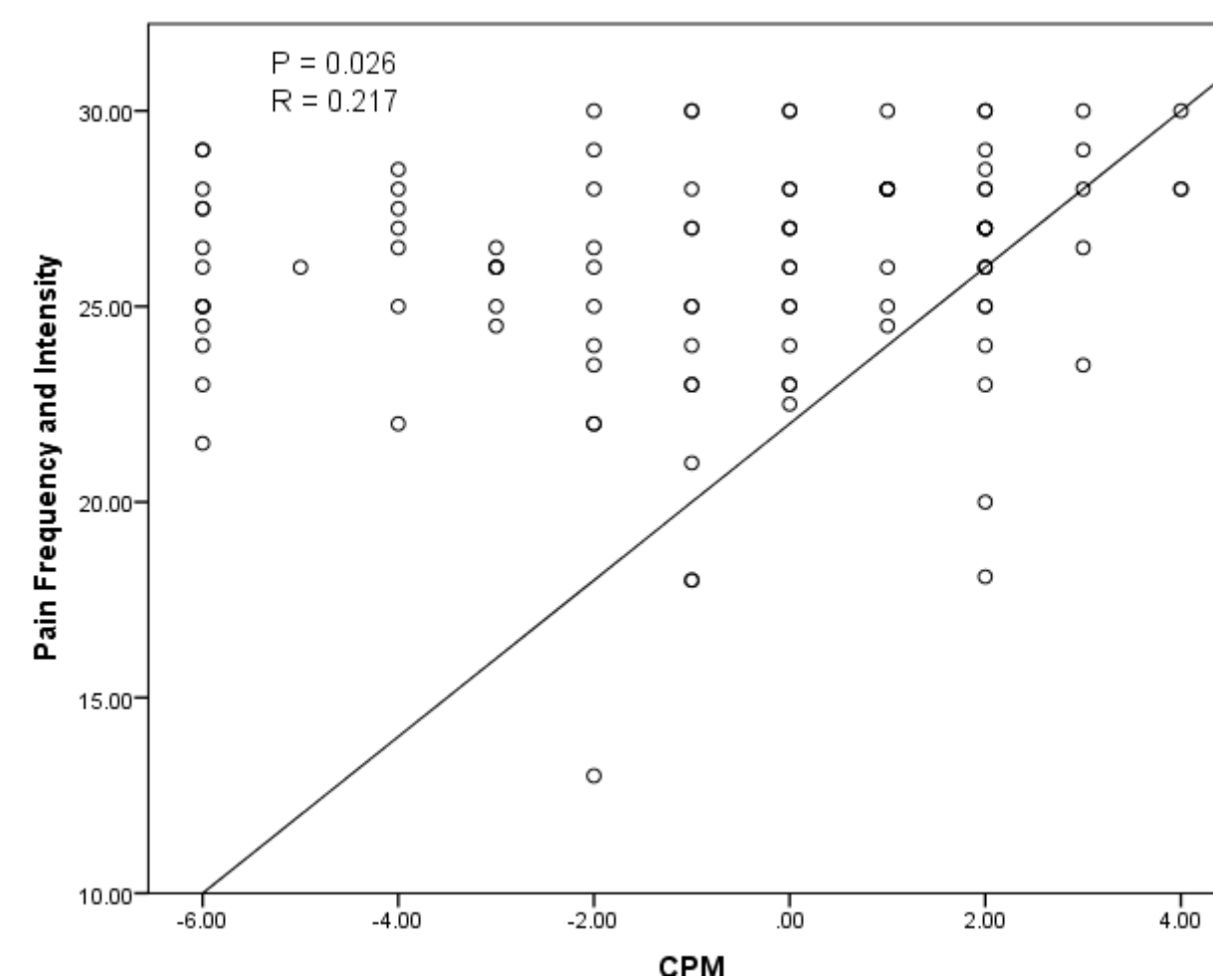
INTRODUCTION

- Fibromyalgia is a chronic diffuse pain syndrome characterized by allodynia and hyperalgesia;
- It is about a malfunction of the Central Nervous System (CNS) and its nociceptive pathways;
- in fibromyalgia, it seems that the Descending Inhibitory System of Pain do not present its full activity, increasing painful stimuli;
- This study aimed to correlate the descending inhibitory system of pain activity with functionality of fibromyalgia women.

RESULTS

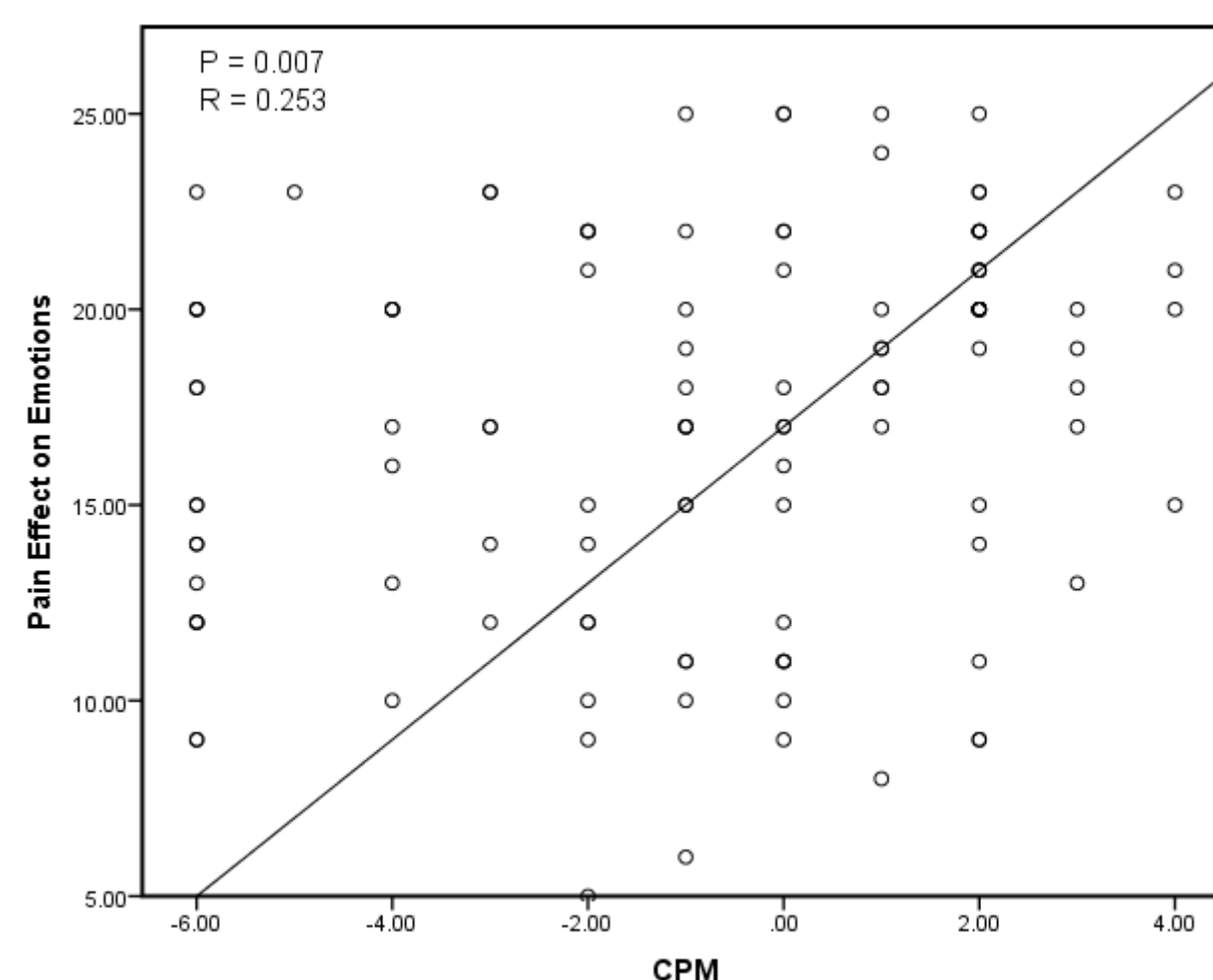
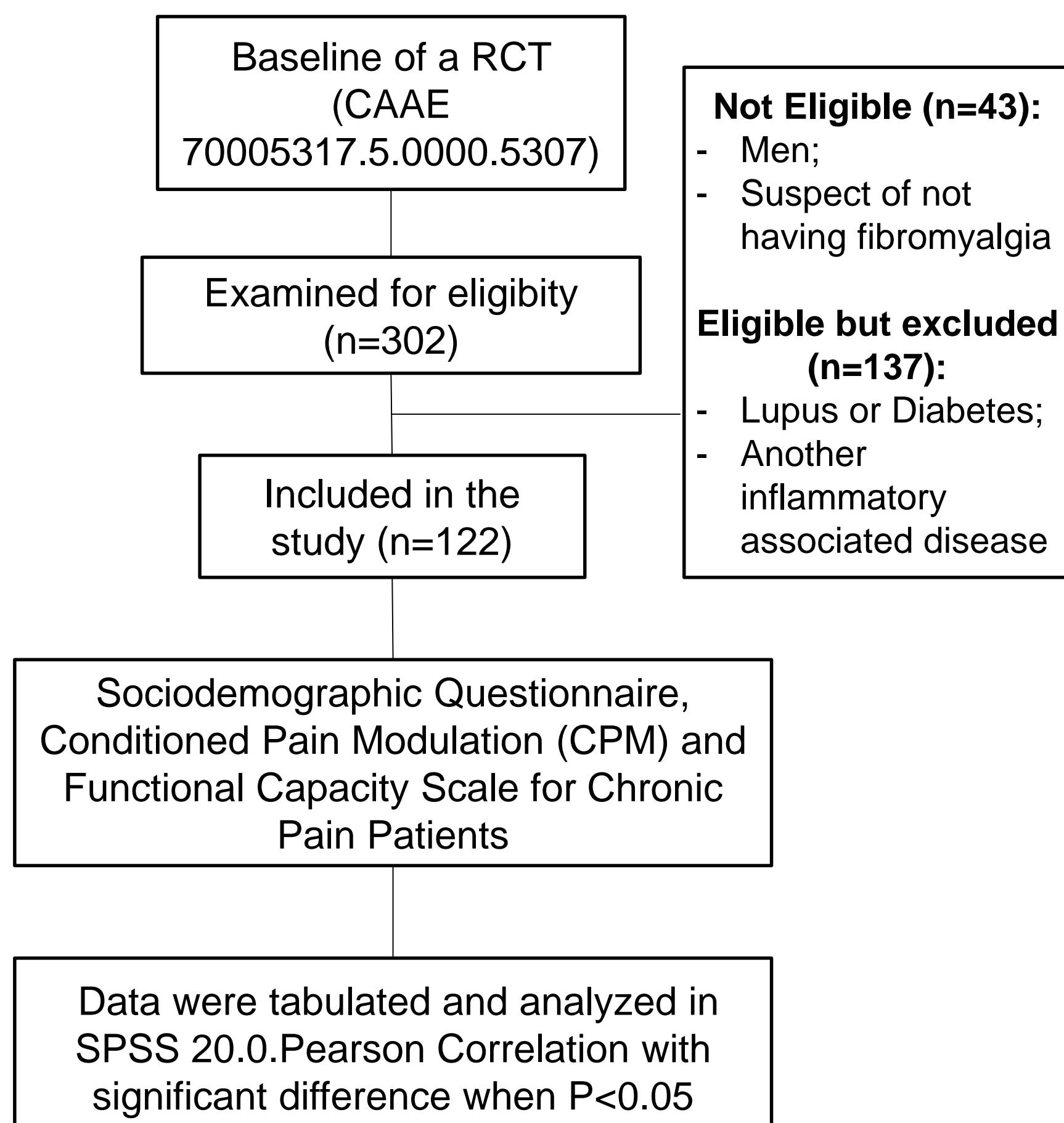
| | Mean | SD (±) |
|-------------|-------|--------|
| Age | 48,77 | 9,439 |
| Scholarship | 11,58 | 4,261 |
| Weight | 74,20 | 14,679 |

Table 1. Sample characteristics



Graph 1. Pain frequency and intensity correlated with CPM results

METHODS



Graph 2. Pain effect on emotions correlated with CPM results

CONCLUSION

- This study showed that the more impaired is descending inhibitory system of pain, higher will be pain intensity, frequency and its interference in emotions
- This system may be correlated to depressive behavior, since it does interfere in emotions.