

UNIVERSIDADE FEDERAL DO RIO GRANDE DO SUL
INSTITUTO DE CIÊNCIAS BÁSICAS DA SAÚDE
PROGRAMA DE PÓS-GRADUAÇÃO EM CIÊNCIAS BIOLÓGICAS:
FARMACOLOGIA E TERAPÊUTICA

Giovana Rolim de Oliveira

**EFEITOS COMPORTAMENTAIS E NEUROQUÍMICOS DO
CARBOFURANO EM PEIXES-ZEBRA**

Porto Alegre

2023

Giovana Rolim de Oliveira

**EFEITOS COMPORTAMENTAIS E NEUROQUÍMICOS DO
CARBOFURANO EM PEIXES-ZEBRA**

Dissertação apresentada ao Programa de Pós-Graduação em Ciências Biológicas: Farmacologia e Terapêutica do Instituto de Ciências Básicas da Saúde da Universidade Federal do Rio Grande do Sul como requisito parcial para a obtenção do título de mestre em Farmacologia e Terapêutica.

Orientador: Prof. Dr. Angelo Piato

Coorientadora: Profa. Dra. Rosane Gomez

Porto Alegre

2023

Giovana Rolim de Oliveira

**EFEITOS COMPORTAMENTAIS E NEUROQUÍMICOS DO
CARBOFURANO EM PEIXES-ZEBRA**

Dissertação apresentada ao Programa de Pós-Graduação em Ciências Biológicas:
Farmacologia e Terapêutica do Instituto de Ciências Básicas da Saúde da Universidade
Federal do Rio Grande do Sul como requisito parcial para a obtenção do título de mestre em
Farmacologia e Terapêutica.

Aprovado em: ____ de _____ de _____.

BANCA EXAMINADORA

Prof. Dr. Bruno Dutra Arbo - UFRGS

Profa. Dra. Mirna Bainy Leal - UFRGS

Profa. Dra. Eliane Dallegrave - UFCSPA

Prof. Dr. Angelo Piato - UFRGS (orientador)

AGRADECIMENTOS

Agradeço a minha mãe por todo apoio, amor e inspiração;

Agradeço ao meu orientador e amigo, Prof. Dr. Angelo, por ter me recebido tão bem, por ser um orientador, professor e pesquisador competente e dedicado;

Agradeço aos colegas do LAPCOM (Laboratório de Psicofarmacologia e Comportamento) da UFRGS pela recepção, ensino e contribuição. Fiz verdadeiros amigos neste laboratório. Obrigada por terem dedicado tempo e carinho ao meu projeto e fazer tudo isso acontecer, tudo com muita competência e muita alegria;

Agradeço também a minha coorientadora Profa. Dra. Rosane Gomez, que foi a primeira pessoa a me receber na UFRGS e abrir as portas para este caminho;

Obrigada aos amigos do Instituto Geral de Perícias e aos amigos da vida por me acompanharem nessa trajetória, vibrarem e chorarem comigo.

RESUMO

O carbofurano (CF) (pesticida carbamato) é amplamente utilizado na agricultura e encontrado como contaminante no meio ambiente e possui alta toxicidade. Ele atua como inibidor da acetilcolinesterase, enzima que degrada a acetilcolina, um dos principais neurotransmissores. Esse acúmulo de acetilcolina resulta na síndrome colinérgica que acarreta danos à saúde humana. No entanto, dados sobre os efeitos do CF no sistema nervoso central ainda são escassos. Este estudo teve como objetivo investigar os efeitos da exposição ao CF em parâmetros comportamentais e neuroquímicos em peixes-zebra adultos. Os animais foram expostos por 96 horas a diferentes concentrações de CF (5, 50 e 500 µg/L) e submetidos a avaliações comportamentais no teste do tanque novo (NTT) e no teste de preferência social (SPT). Posteriormente, foram avaliados marcadores neuroquímicos associados ao estresse oxidativo e os níveis de acetilcolinesterase. No NTT e SPT, o CF não alterou os parâmetros comportamentais avaliados. Além disso, o CF não afetou a atividade da AChE, tióis não proteicos (NPSH) e substâncias reativas ao ácido tiobarbitúrico (TBARS) no encéfalo dos peixes-zebra. Este estudo demonstrou que o CF não afetou o comportamento e o status oxidativo em peixes-zebra nas condições estudadas. No entanto, mais pesquisas são necessárias em relação à exposição ambiental desse composto em organismos não-alvo.

Palavras-chave: Carbofurano, pesticidas, comportamento, *Danio rerio*, peixe-zebra, estresse oxidativo

ABSTRACT

Carbofuran (CF) (carbamate pesticide) is widely used in agriculture and found as a contaminant in the environment, possessing high toxicity. It acts as an inhibitor of acetylcholinesterase, an enzyme that degrades acetylcholine, one of the main neurotransmitters. This accumulation of acetylcholine results in cholinergic syndrome, which causes damage to human health. However, data on the effects of CF on the central nervous system are still scarce. This study aimed to investigate the effects of CF exposure on behavioral and neurochemical parameters in adult zebrafish. The animals were exposed for 96 hours to different concentrations of CF (5, 50, and 500 µg/L) and subjected to behavioral assessments in the novel tank test (NTT) and the social preference test (SPT). Subsequently, neurochemical markers associated with oxidative stress and acetylcholinesterase levels were evaluated. In the NTT and SPT, CF did not alter the assessed behavioral parameters. Furthermore, CF did not affect the AChE activity, non-protein thiols (NPSH), and thiobarbituric acid reactive substances (TBARS) in the zebrafish brain. This study demonstrated that CF did not affect behavior and oxidative status in zebrafish under the studied conditions. However, more research is needed regarding the environmental exposure of this compound in non-target organisms.

Keywords: Carbofuran, pesticides, behavior, *Danio rerio*, acetylcholinesterase, oxidative stress

LISTA DE SIGLAS E ABREVIATURAS

MAPA – Ministério da Agricultura, Pecuária e Abastecimento

IBAMA – Instituto Brasileiro do Meio Ambiente e dos Recursos Naturais

ANVISA – Agência Nacional de Vigilância Sanitária

IA – Ingrediente ativo

ha – Hectare

kg/ha – Quilos por área

L – Litro

µg/L – Micrograma por litro

µg/kg – Micrograma por quilo

mg – Miligrama

PARA – Programa de Análise de Resíduos

ACh – Acetilcolina

AChE – Acetilcolinesterase

NPSH – Tióis não-proteicos

TBARS – Substâncias reativas ao ácido tiobarbitúrico

mg/dL – Miligrama por decilitro

KOC – Coeficiente de partição de carbono orgânico

NTT – *Novel tank test*

SPT – *Social preference test*

SUMÁRIO

1. INTRODUÇÃO.....	11
2. OBJETIVO GERAL	16
2.1 Objetivos específicos	16
3. ARTIGO.....	17
4. DISCUSSÃO	38
5. CONCLUSÃO	40
6. REFERÊNCIAS.....	41
7. ANEXOS.....	49
7.1 CARTA DE APROVAÇÃO DA CEUA - UFRGS.....	49
7.2 RIGHTSLINK PRINTABLE LICENCE – FIGURA 1.....	50

1. INTRODUÇÃO

1.1 Pesticidas

Há cerca de 85 anos era criado o primeiro pesticida moderno, o composto organoclorado dicloro-difenil-tricloroetano (DDT), criado na Segunda Guerra Mundial com finalidade de uso como inseticida (Ribeiro e Pereira, 2016). Desde então, diversos outros compostos foram lançados no mercado, contribuindo para que a produção agrícola dê conta da demanda alimentar mundial (Ruomeng et al., 2023; United Nations, 2022.). Os pesticidas são descritos como qualquer substância ou mistura de substâncias químicas e biológicas destinadas a repelir, destruir e controlar qualquer praga ou regular o crescimento das plantas (FAO and WHO, 2022). No Brasil, o Ministério da Agricultura, Pecuária e Abastecimento (MAPA), o Instituto Brasileiro do Meio Ambiente e dos Recursos Naturais (IBAMA) e a Agência Nacional de Vigilância Sanitária (ANVISA) são os órgãos com competência para realizar a fiscalização dos produtos (Albuquerque et al., 2016). Desde 2008, o Brasil está entre os maiores consumidores de pesticidas do mundo. Entre os anos de 2012 e 2014, a comercialização de pesticidas cresceu de 823.226 para 914.220 toneladas (INCA, 2021). O relatório de Indicadores de Desenvolvimento Sustentável (INCA, 2021) indicou um aumento do consumo de ingredientes ativos (IA) por área plantada (hectare, ha), de 3,2 kg/ha para 6,7 kg/ha, no período de 2000 a 2014, o que representa mais de 100% de aumento no consumo. O PARA, Programa de Análise de Resíduos de Agrotóxicos em Alimentos (um programa criado em 2001 com o objetivo de avaliar continuamente os níveis de resíduos de pesticidas nos alimentos que estão sendo comercializados no Brasil) realizou em 2018 uma análise de 4616 amostras de alimentos variados de diferentes regiões e dentro dessas amostras, 23% foram consideradas insatisfatórias para consumo pois apresentaram ou ingrediente ativo acima do limite estabelecido pela ANVISA, ou ingrediente ativo proibido para a cultura em que foi destinado ou ingrediente ativo proibido no Brasil. Os pesticidas mais detectados foram imidacloprido, tebuconazol, carbendazim, piraclostrobina e ditiocarbamatos (Programa de Análise de Resíduos de Agrotóxicos em Alimentos (PARA), 2019). Apesar da ampla utilização, faltam informações sobre a quantidade e tipo de produto utilizado por unidade da Federação, o que dificulta a implantação de uma política pública de prevenção de intoxicações e de contaminação ambiental (INCA, 2021).

O uso desses compostos em larga escala tem implicado em uma série de questionamentos, devido ao potencial impacto em organismos não-alvo presentes no ecossistema, incluindo os seres humanos (Dutra and Ferreira, 2017; Neves et al., 2020). Os efeitos da exposição aos pesticidas em populações não-alvo já são estudados há anos. Podem-

se destacar alterações em eixos neuroendócrinos (Kumar et al., 2023), malformações congênitas (Dutra e Ferreira, 2017), alterações na qualidade espermática (Abell et al., 2000) e doenças cardiovasculares (Zago et al., 2020). Importante ressaltar que a etiologia de doenças neurodegenerativas, como Parkinson e Alzheimer, tem sido associada à exposição de pesticidas (Baltazar et al., 2014; Kamel et al., 2007; Parrón et al., 2011; Tang, 2020). Também é importante a associação entre a exposição a pesticidas e ansiedade e depressão (Cancino et al., 2023; Freire and Koifman, 2013; Wu et al., 2023; Zanchi et al., 2023). No Brasil, já existem estudos que demonstram a associação entre o aumento das taxas de suicídio e a exposição a pesticidas (Faria et al., 2014) no Mato Grosso do Sul (Pires et al., 2005), Rio de Janeiro (Meyer et al., 2010) e Rio Grande do Sul (Meneghel et al., 2004).

1.2 Carbofurano

Um dos pesticidas mais comumente utilizados são os carbamatos, como por exemplo o carbofurano, o metomil e o tiodicarbe (Neves et al., 2020). O carbofurano ainda é utilizado em alguns países como Portugal, França e Espanha (Lewis et al., 2016), porém teve seu uso suspenso no Brasil em 2018 devido ao seu efeito tóxico na saúde humana (Pereira, 2017). A Organização Mundial da Saúde alerta para os riscos da exposição ao carbofurano, dentro eles efeitos neurotóxicos, genotóxicos, citotóxicos, mutagênicos, reprodutivos, endócrinos e dermatológicos (World Health Organization and Safety, 2010).

Apesar de descontinuado, alguns estudos mostraram a presença de carbofurano em alimentos e em águas de superfície tanto no Brasil como em outros países. Em alimentos, o carbofurano foi encontrado acima do limite máximo em pepinos (0,146 µg/kg) (Song et al., 2018), néctar e pólen da canola (35,78 µg/kg) (Wen et al., 2021) e em amendoins no Camarões (0,0966 µg/kg) (Galani et al., 2020). Também foram identificados traços de carbofurano (de 0,018 a 0,167 µg/L) em 50% das amostras de refrigerantes preparados a base de frutas coletadas mundialmente (Castilla-Fernández et al., 2021). Em rios do estado de Santa Catarina (Brasil), aproximadamente 7% das amostras apresentaram detecção de carbofurano nos anos de 2013 e 2014 (Vieira et al., 2016). Na Lagoa dos Patos foi detectado 1,40 µg/L de carbofurano (Silva et al., 2009), no Rio Piratini 11,76 µg/kg (Grützmacher et al., 2008) e uma alta concentração (148 µg/L) em rios da região centro-oeste do Brasil (Brovini et al., 2023). Isso pode ser devido ao uso indevido do pesticida e/ou ao uso de carbossulfano e de benfuracabe que produzem carbofurano como metabólito no ambiente, sendo mais persistente do que os compostos primários (Iesce et al., 2006; Trevisan et al., 2004; Zhang et al., 2016).

O carbofurano é comercializado na fórmula de Furadan®, um sólido cristalino com leve odor fenólico, altamente solúvel em água (352 mg/dL a 25°C) com baixo coeficiente de adsorção no solo ($K_{oc} = 30$). K_{oc} é, portanto, o coeficiente de partição do contaminante entre solo-água corrigido pela matéria orgânica do solo (D'Agostinho and Flues, 2006), o que exemplifica a baixa retenção do carbofurano no solo. A principal fonte de contaminação do carbofurano no meio ambiente ocorre por aplicação direta na cultura ou contaminação indireta através da sua mobilidade no solo e volatilização, o que permite contaminar fontes de água próximas, plantas e animais (PubChem; Tudi et al., 2022). A quantidade de pesticida aplicada não atinge somente os organismos-alvo já que grande parte da aplicação é dispersada, contaminando o ar, solo e ecossistemas (Mishra et al., 2020; Vryzas, 2018). A meia-vida desse composto é variável, sendo reportada em 36 dias na água e 75 dias no solo, sendo resistente à degradação (Mishra et al., 2020). O baixo coeficiente de adsorção do carbofurano favorece sua contaminação em superfícies e águas subterrâneas. O pH do solo é um fator determinante da persistência desse pesticida, já que o carbofurano tende a estabilidade em solos ácidos em relação a solos neutros ou alcalinos (Campbell et al., 2004; PubChem). O destino ambiental e a sua persistência depende de diversos fatores como pH, tipo de solo, a temperatura do ambiente, umidade do solo/planta, população bacteriana presente no solo e o tipo de formulação utilizada (Mishra et al., 2020). No solo, o carbofurano pode ser degradado em metabólitos através de degradação química ou microbiológica e na água por fotólise ou foto-oxidação (Fenoll et al., 2013; Mishra et al., 2020). A figura 1 exemplifica a rota ambiental do carbofurano, desde sua aplicação, contaminação e degradação.

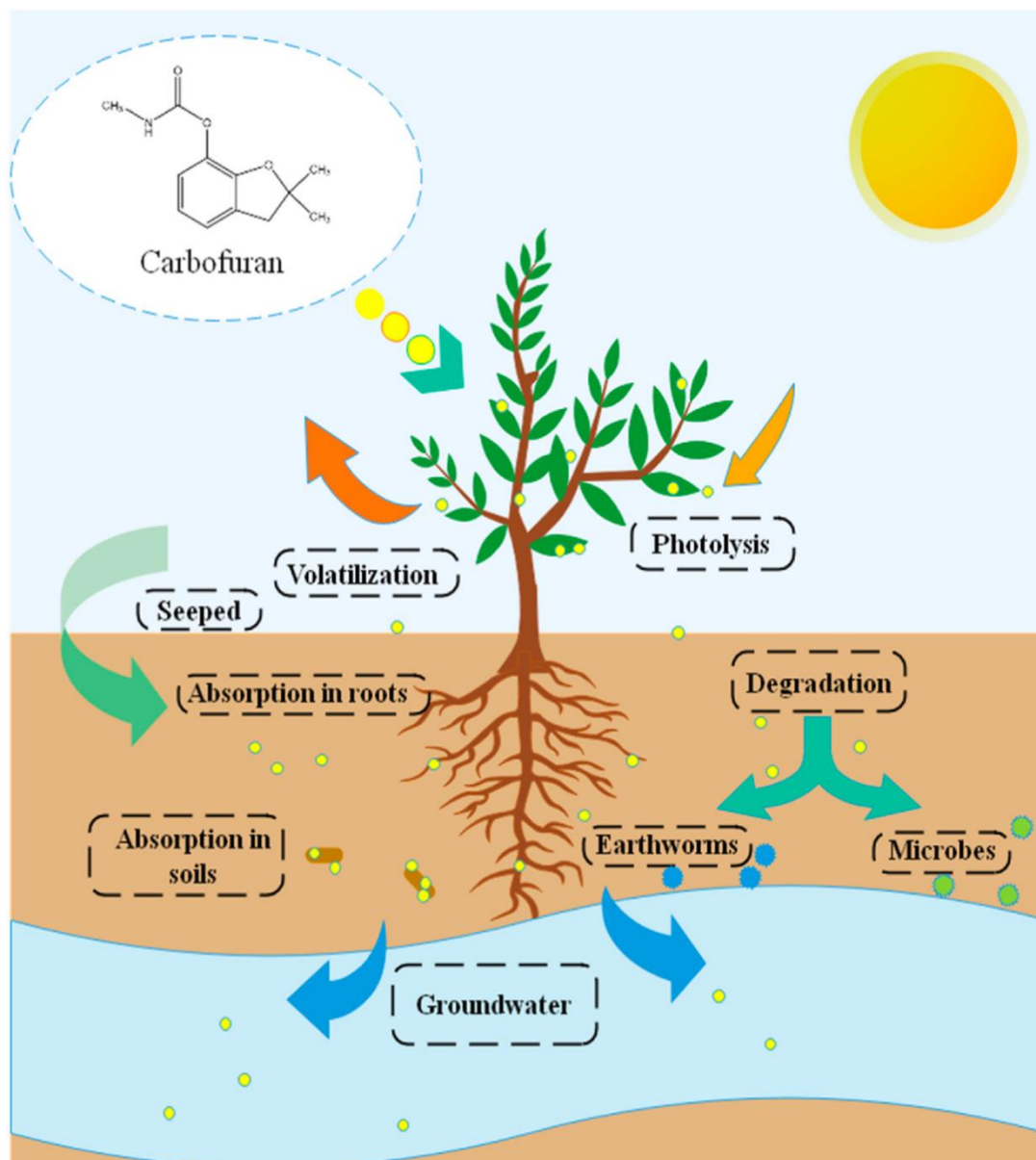


Figura 1. Destino ambiental do carbofurano (Fonte autorizada: Mishra et al., 2020).

O carbofurano pode ser absorvido pelas vias oral, respiratória e cutânea de organismos não-alvo. São inibidores reversíveis da acetilcolinesterase (AChE), causando uma carbamilação nessa enzima que degrada a acetilcolina impedindo a inativação da acetilcolina e permitindo uma ação prolongada desse neurotransmissor na fenda sináptica, levando a uma hiperexcitabilidade dos receptores colinérgicos (tanto nicotínicos como muscarínicos) e a uma síndrome colinérgica. Essa síndrome pode produzir sintomas como náuseas, vômito, fraqueza, dor e, em casos graves, coma e morte (Araújo et al., 2016)

Em estudos pré-clínicos, a exposição ao carbofurano (0,625 mg/kg) induziu alterações de hiperestimulação colinérgica em frangos (Lehel et al., 2010). Em ratos (1mg/kg), aumentou o estresse oxidativo e reduziu a atividade da acetilcolinesterase (Kamboj et al., 2008). Em ratas

adultas, o carbofurano (0,4, 0,7, 1 e 1,3 mg/kd/dia) alterou o ciclo estral e afetou os folículos ovarianos, alterando a qualidade reprodutiva dos animais (Baligar and Kaliwal, 2002). Em peixes-zebra, o carbofurano (5, 50 e 500 µg/L) induziu um efeito ansiogênico e aumentou a atividade da enzima tirosina hidroxilase (Liu et al., 2020), enquanto em lambaris, esse composto (10, 50, 100 e 500 µg/L) aumentou o movimento opercular e diminuiu a velocidade de nado, aumentando o consumo de oxigênio (Mendes et al., 2021). Ainda em peixes, induziu danos oxidativos em carpas (50 µg/L) (Clasen et al., 2014) e diminuiu a velocidade de nado e inibiu a acetilcolinesterase em robalos (31, 63, 125 e 250 µg/L) (Hernández-Moreno et al., 2011).

Considerando a problemática levantada do uso disseminado de pesticidas e seus efeitos deletérios em seres humanos e outros organismos não-alvo, se faz necessário o estudo dos efeitos de concentrações ambientais do carbofurano sobre parâmetros comportamentais e neuroquímicos em peixes-zebra. De ampla homologia genética com o ser humano, o peixe-zebra é um animal que pode facilmente mimetizar as condições de um animal no ecossistema exposto ao pesticida. Porém, existem poucos estudos sobre os efeitos do carbofurano de concentrações ambientais e os seus efeitos comportamentais e neuroquímicos nessa espécie.

2. OBJETIVO GERAL

Avaliar os efeitos da exposição ao carbofurano em concentrações ambientais (5, 50 e 500 µg/L) sobre parâmetros comportamentais e neuroquímicos em peixes-zebra adultos.

2.1 Objetivos específicos

2.1.1 Avaliar o efeito do carbofurano sobre parâmetros comportamentais como distância percorrida, velocidade média, número de cruzamentos, tempo e número de entradas na zona superior e inferior do tanque, tempo e números de episódios de imobilidade no teste de tanque novo em peixes-zebra adultos;

2.1.2 Avaliar o efeito do carbofurano sobre parâmetros comportamentais como tempo e número de entradas na zona de interação, distância percorrida, velocidade média e número de cruzamentos no teste de preferência social em peixe-zebra adulto;

2.1.3 Avaliar o efeito do carbofurano sobre parâmetros neuroquímicos (níveis de tióis não-proteicos [NPSH], substâncias reativas ao ácido tiobarbitúrico [TBARS] e atividade da acetilcolinesterase [AChE]) em encéfalos de peixes-zebra adultos.

3. ARTIGO

Os resultados desse trabalho são apresentados na forma de artigo científico completo aceito para publicação na revista *Comparative Biochemistry and Physiology Part C* (doi: 10.1016/j.cbpc.2024.109969).

Evaluation of behavioral and neurochemical changes induced by carbofuran in zebrafish (*Danio rerio*)

Giovana R Oliveira^{a#}, Matheus Gallas-Lopes^{a#}, Rafael Chitolina^b, Leonardo M Bastos^b, Stefani M Portela^b, Thailana Stahlhofer-Buss^b, Darlan Gusso^c, Rosane Gomez^a, Angela TS Wyse^c, Ana P Herrmann^{a,b}, Angelo Piato^{a,b,*}

^aPrograma de Pós-graduação em Farmacologia e Terapêutica, Universidade Federal do Rio Grande do Sul (UFRGS), Porto Alegre, RS, Brazil

^bLaboratório de Psicofarmacologia e Comportamento (LAPCOM), Departamento de Farmacologia, Instituto de Ciências Básicas da Saúde (ICBS), Universidade Federal do Rio Grande do Sul (UFRGS), Porto Alegre, RS, Brazil

^cPrograma de Pós-graduação em Ciências Biológicas, Bioquímica, Laboratório de Neuroproteção e Doenças Neurometabólicas, Departamento de Bioquímica, Instituto de Ciências Básicas da Saúde (ICBS), Universidade Federal do Rio Grande do Sul (UFRGS), Porto Alegre, RS, Brazil

[#]Both authors contributed equally to this work

*Corresponding author: Angelo Piato, Laboratório de Psicofarmacologia e Comportamento (LAPCOM), Departamento de Farmacologia, Instituto de Ciências Básicas da Saúde, Universidade Federal do Rio Grande do Sul (UFRGS), Rua Ramiro Barcelos 2600/411, Porto Alegre, RS, 90035-003, Brazil. Phone: +55 51 33082034. E-mail: angelopiato@ufrgs.br

Abstract

Carbofuran (CF) is a carbamate class pesticide, widely used in agriculture for pest control in crops. This pesticide has high toxicity in non-target organisms, and its presence in the environment poses a threat to the ecosystem. Research has revealed that this pesticide acts as an inhibitor of acetylcholinesterase (AChE), inducing an accumulation of acetylcholine in the brain. Nonetheless, our understanding of CF impact on the central nervous system remains elusive. Therefore, this study explored how CF influences behavioral and neurochemical outcomes in adult zebrafish. The animals underwent a 96-hour exposure protocol to different concentrations of CF (5, 50, and 500 $\mu\text{g/L}$) and were subjected to the novel tank (NTT) and social preference tests (SPT). Subsequently, they were euthanized, and their brains were extracted to evaluate neurochemical markers associated with oxidative stress and AChE levels. In the NTT and SPT, CF did not alter the evaluated behavioral parameters. Furthermore, CF did not affect the levels of AChE, non-protein sulfhydryl groups, and thiobarbituric acid reactive species in the zebrafish brain. Nevertheless, further investigation is required to explore the effects of environmental exposure to this compound on non-target organisms.

Keywords: Carbofuran, pesticides, behavior, *Danio rerio*, acetylcholinesterase, oxidative stress

Introduction

Pesticides are used in agricultural management, pest, and disease control to increase productivity and profit. However, the widespread use of these compounds has raised numerous questions due to their potential to affect non-target organisms in the ecosystem, including humans (Damalas and Eleftherohorinos 2011; Dutra and Ferreira 2017; Neves et al. 2020). These molecules also have various ways of contaminating non-target organisms, such as through water, food, or air (Xiong et al. 2023), which makes humans an easy target for contamination. The increase in pesticide production and its widespread use over the last decade has resulted in a significant public health problem due to exposure to these agrochemicals (Brovini et al. 2023). The extent of this contamination varies according to the physical and chemical properties of each compound (such as half-life, stability, and combination with other compounds that act as carriers) and soil characteristics (such as microbiota, pH, porosity, water concentration, leaching process, compound dissipation, and soil temperature) (Vryzas 2018; Mishra et al. 2020; Hu et al. 2022).

Carbofuran (CF) is a widely used carbamate class pesticide that has been detected in rivers worldwide. In Brazil, the detection of CF ranged from 1.40 µg/L to 148 µg/L (Grützmaier et al. 2008; Brovini et al. 2023) and, in China, from 1.54 µg/L to 204 µg/L (Zhang et al. 2016). The highest concentration found in Kenya was 495 µg/L (Otieno et al. 2010). In food, CF has been found above the maximum limit in cucumbers (0.146 µg/kg) (Song et al. 2018), nectar, and rapeseed pollen (35.78 µg/kg) (Wen et al. 2021), and in peanuts in Cameroon (0.0966 µg/kg) (Galani et al. 2020). CF presents high environmental persistence due to its physicochemical characteristics. It has a half-life of 36 days in water and 75 days in soil, making it resistant to degradation. Additionally, it is highly soluble in water (351 mg/dL), has high mobility in various soil types, and has a low adsorption coefficient ($K_{oc}=30$), enhancing its contamination potential in aquatic environments (Mishra et al. 2020). It also remains stable in acidic or neutral pH soils, further contributing to its persistence in the environment (Mishra et al. 2020; Tang et al. 2021; Brovini et al. 2023). CF can be absorbed through oral, respiratory, and dermal routes in non-target organisms, causing a cholinergic syndrome, leading to symptoms such as nausea, vomiting, weakness, pain, and, in severe cases, coma and death (Mishra et al. 2020).

In zebrafish, exposure to CF increases anxiety and tyrosine hydroxylase activity (Liu et al. 2020). Furthermore, exposure to CF induced oxidative damage in carp (*Cyprinus carpio*), leading to alterations in superoxide dismutase, catalase, glutathione S-transferase levels, and

thiobarbituric acid reactive species (TBARS) levels (Clasen et al. 2014). Additionally, the impacts of CF exposure on sea bass (*Dicentrarchus labrax*) included decreased swimming speed and inhibition of acetylcholinesterase (AChE) (Hernández-Moreno et al. 2011). Studies on CF exposure in humans have shown an association with the development of neurodegenerative diseases (Kamel et al. 2007; Tang et al. 2021), alterations in sperm quality, and testosterone levels (Abell et al. 2000). The literature has also explored the relationship between exposure to carbamates and mental disorders such as depression and anxiety (Freire and Koifman 2013).

Considering the widespread use of CF and its potential toxicity to non-target organisms, this study aimed to assess the effects of CF on behavioral and neurochemical parameters in adult zebrafish.

Materials and Methods

Animals

We conducted experiments using 160 adult short-fin wild-type zebrafish (*Danio rerio*, Hamilton, 1822), aged between 4 and 6 months, with an equal distribution of males and females (1:1 ratio) acquired from a local commercial supplier (Delphis, RS, Brazil). Fish were acclimated to the laboratory conditions for at least 2 weeks. The animals were housed in unenriched 16-L tanks (40×20×24 cm, maximum density of two fish per liter) and under a 14/10-h light/dark cycle (lights on at 7 a.m. and off at 9 p.m.). The water in the tanks adhered to controlled conditions necessary for zebrafish (see details in Benvenuti et al. 2021). Aeration and filtration of water were consistently maintained using mechanical, biological, and chemical systems. The fish were fed twice daily with a combination of commercial flake food (Poytara®, Brazil) and brine shrimp (*Artemia salina*). The animals were euthanized by hypothermic shock followed by decapitation after the completion of behavioral testing, according to the AVMA Guidelines for the Euthanasia of Animals (Leary et al. 2020). The animals were subjected to chilled water with temperatures ranging from 2 to 4 °C for at least 5 minutes following the loss of posture and cessation of opercular movements. Afterward, decapitation was performed as a secondary measure to ensure death. Following euthanasia, the sex of each animal was confirmed by dissection of gonadal tissue. Since no sex-specific effects were observed in any of the experiments, the data were combined for analysis. The animal welfare and ethical review committee at the Universidade Federal do Rio Grande do Sul (UFRGS) approved all procedures conducted in this study (approval #42114/2022).

Chemicals

CF was obtained from Sigma-Aldrich™ (CAS 1563-66-2) (St. Louis, MO, USA). Biochemical assay reagents, including bovine serum albumin (CAS Number: 9048-46-8), 5,5'-dithiobis (2-nitrobenzoic acid) (DTNB) (CAS Number: 69-78-3), thiobarbituric acid (TBA) (CAS Number: 504-17-6), and trichloroacetic acid (TCA) (CAS Number: 76-03-9), were obtained from Sigma Aldrich (St. Louis, MO, USA). Additionally, absolute ethanol (CAS Number: 64-17-5) was acquired from Merck KGaA (Darmstadt, Germany).

Experimental design

The animals were allocated to the following experimental groups: control (CTRL, n=40) and CF (5, 50, and 500 µg/L, n=40). The concentrations were determined using environmental concentrations that had been previously reported (Otieno et al. 2010; Zhang et al. 2016; Liu et al. 2020; Brovini et al. 2023). Allocation to experimental groups followed block randomization procedures to counterbalance sex and two different housing tanks. The animals of the different experimental groups were allocated in the same room under the same conditions of temperature, luminosity, and vertical level. The experiments were carried out in two batches, with half the sample size in each batch.

During the drug exposure period, the fish were housed in 4-L static tanks (18×18×18 cm), with two tanks being employed within each concentration to reduce the tank-related effects and remained there for 96 consecutive hours (OECD 203, 2019). Tanks were coded to keep caregivers blinded to the treatment group and barriers were set to visually isolate the animals from different groups. CF was dissolved in ultrapure water to create a stock solution of 40 mg/mL, which was then utilized to prepare diluted solutions for the exposure. The final test concentrations were achieved by adding specific amounts of the stock solution to the water in the home tanks.

After 96 h of exposure, a set of animals was individually submitted to the novel tank test (NTT) (n=24), and a different set of animals to the social preference test (SPT) (n=16). The order of outcome assessment followed block randomization procedures to counterbalance for treatment groups. Animal behavior was recorded (Logitech® C920 HD webcam) and analyzed by researchers who were blinded to the experimental conditions. The analysis was conducted using ANY-Maze™ tracking software (Stoelting Co., based in Wood Dale, IL, USA). All tests were conducted between 08:00 a.m. and 12:00 p.m. (during the light phase). After the completion of the tests, the animals were euthanized, and their brains were promptly dissected and homogenized for the neurochemical assays. The brains of the animals submitted to NTT

were prepared for analyses of oxidative stress, with a pool of 4 brains per sample. After the SPT, the animals were euthanized, and the brains of these animals were collected and used to analyze the AChE activity. The neurochemical parameter analyses were as follows: non-protein sulfhydryl groups (NPSH) (n=6), TBARS (n=6), and acetylcholinesterase (AChE) activity (n=16). Figure 1 illustrates the experimental design.

We report details of our sample size estimation, all manipulations, and measures employed in the study. Raw data have been deposited in the Open Science Framework and are openly accessible at osf.io/2dez8/ (Rolim et al. 2023).

Novel Tank Test (NTT)

The NTT was conducted by placing animals individually in the apparatus (24×8×20 cm) filled with water at optimal conditions (15 cm water level) and recording their behavior for 6 minutes, (Marcon et al. 2018; Mocelin et al. 2019; Bertelli et al. 2021). To prevent any potential interference from drug residues or alarm substances released by previously tested fish, the water in the tanks was changed between each animal. The behavior of the animals was assessed using the ANY-maze™ software, with which we virtually divided the tank into three equal horizontal zones (upper, middle, and bottom). Quantified parameters were total distance traveled, mean speed, line crossings between tank zones, time spent, and the number of entries in the upper and bottom zones of the tank.

Social Preference Test (SPT)

The SPT was conducted following previously established protocols (Benvenuti et al. 2021; Giongo et al. 2023). In the SPT, individual fish were placed in a central tank (30×10×15cm), with two identical tanks (15×10×13 cm) on each side. They were then filmed from a frontal view for 7 minutes. On one side of the central tank, there was a tank containing only water, serving as a neutral stimulus, while the tank on the other side contained 10 zebrafish, providing a social stimulus. All tanks were filled with water at a consistent level of 10 cm and maintained under the same conditions. To prevent potential biases, the side of the tank containing the social stimulus was counterbalanced between trials. The water in the test tanks was changed between animals to prevent any interference from drug residues or alarm substances released by previously tested fish. The analyses were carried out with ANY-Maze™ software with the test tank virtually divided into three equal zones (interaction, middle, and neutral). The interaction zone was positioned adjacent to the tank containing the social stimulus, while the neutral zone was adjacent to the neutral stimulus. At the beginning of the test, animals were placed in the middle zone and given 2 minutes to acclimate to the test tank. Subsequently,

their behavior was recorded and analyzed for 5 minutes. The parameters quantified were time and entries in the interaction zone, distance traveled, mean speed, and the number of crossings between tank zones.

Biochemical Parameters

Following the behavioral tests, brain samples were collected according to previously published protocols (Sachett et al. 2020c). Each independent sample involved the collection of four brains immediately following euthanasia. These brains were then pooled together and homogenized in 600 μ L of phosphate-buffered saline (PBS). The homogenized mixture was centrifuged at 3000 g at 4°C using a cooling centrifuge, and the resulting supernatant was collected, which was kept in microtubes frozen at -80°C until the assays were performed (average of 2 months of storage before the analyses). The protein content was quantified according to established protocols (Sachett et al. 2020a). The following biochemical parameters were evaluated: non-protein sulfhydryl group (NPSH) levels (Sachett et al. 2021), thiobarbituric acid reactive species (TBARS) (Sachett et al., 2020b), and acetylcholinesterase (AChE) activity (Ellman et al. 1961). Methodological details can also be consulted in [protocols.io \(protocols.io/lapcom\)](https://protocols.io/lapcom).

Statistical Analysis

The sample size was determined to detect effect sizes of 0.5 and 0.4, respectively, for the NTT and SPT, with a power of 0.9 and an alpha of 0.05 using G*Power 3.1.9.7 for Windows. This resulted in a total sample size of 160, equivalent to n=24 animals per experimental group in NTT and n=16 animals per experimental group in SPT. In the NTT, the primary outcome was defined as the total distance traveled by the animals. On the other hand, in the SPT, the primary outcome was defined as the time spent by the animals in the interaction zone. The normality and homogeneity of variances were assessed for all datasets using the D'Agostino-Pearson and Levene tests, respectively. Subsequently, the data were analyzed using one-way ANOVA. Post hoc analyses were conducted using Tukey's test when appropriate. All statistical analyses and graphical representations were performed using GraphPad Prism version 8.0.1 for Windows. No outliers were excluded from the behavioral analysis data. Two data points were excluded from the control group, one from the CF 5 μ g/L group, two from the CF 50 μ g/L group, and one from the CF 500 μ g/L group in the AChE analysis due to discrepant results, likely arising from analytical errors. Data are expressed as mean \pm standard deviation of the mean (SD). The level of significance was set at $p < 0.05$.

Results

Behavioral Parameters

Figure 2 summarizes the acute effects of CF on adult zebrafish behavior in the NTT. At the tested concentrations, CF exposure did not induce alterations in the distance traveled ($F_{3,92}=0.005784$, $p=0.9994$; figure 2A), line crossings ($F_{3,92}=0.4002$, $p=0.7531$; figure 2B), and time ($F_{3,92}=0.4235$, $p=0.7366$; figure 2C) and entries in the upper zone ($F_{3,92}=0.5735$, $p=0.6339$; figure 2D). Exposure to CF also did not elicit changes in the mean swimming speed (Suppl. figure 1A), time (Suppl. figure 1B), and entries to the bottom zone (Suppl. figure 1C).

The acute effects of CF on adult zebrafish in the SPT are shown in figure 3. CF, in the tested concentrations, did not alter the time spent in the interaction zone ($F_{3,60}=0.8752$, $p=0.4591$; figure 3A), entries to the interaction zone ($F_{3,60}=1.315$, $p=0.2780$; figure 3B), and distance traveled ($F_{3,60}=2.320$, $p=0.0844$; figure 3C). Changes in the mean swimming speed (Suppl. figure 2A) and line crossings (Suppl. figure 2B) were also not observed. Table 1 summarizes the one-way ANOVA analysis results.

Biochemical Parameters

The effects of acute CF exposure on oxidative status parameters and AChE activity in zebrafish are presented in figure 4. The exposure did not induce alterations to the levels of NPSH ($F_{3,20}=0.9166$, $p=0.4507$; figure 4A) and TBARS ($F_{3,20}=0.4635$, $p=0.7109$; figure 4B), and to the activity of AChE ($F_{3,54}=0.5667$, $p=0.6393$; figure 4C). Table 2 summarizes the one-way ANOVA analysis results.

Discussion

CF at concentrations of 5, 50, and 500 $\mu\text{g/L}$ showed no impact on zebrafish behavior during both the novel tank and social preference tests. Moreover, there were no alterations observed in the analyzed neurochemical parameters, such as NPSH, TBARS, and AChE activity.

The NTT is a well-established tool for assessing the effects of anxiety-like behavior-modulating interventions in zebrafish (Kysil et al. 2017; Johnson et al. 2023). This test examines the natural behavior exhibited when these fish are introduced to a novel environment. Zebrafish typically display an innate preference for the bottom zone, but as they acclimate, this behavior gradually shifts, leading them to explore other zones of the tank (Cachat et al. 2010). Anxiogenic interventions tend to exacerbate the zebrafish's initial preference for the bottom region, exhibiting heightened anxiety-like behavior (Kysil et al. 2017; Reis et al. 2020).

Conversely, anxiolytic treatments or interventions disrupting their natural defensive behavior encourage fish to spend more time in the upper zone (Gebauer et al. 2011; Kysil et al. 2017). Additionally, total distance traveled serves as a metric for overall locomotor activity, offering valuable insights into the hyperstimulating or sedating effects of various interventions (Cachat et al. 2010; Kysil et al. 2017). The complexity of zebrafish locomotor behavior is governed by multiple brainstem neurons and neuromodulatory pathways, whose integrity is crucial for normal functioning (Drapeau et al. 2002; Dreosti et al. 2015; Sachett et al. 2022). The behavioral parameters assessed in the NTT are vital for essential functions such as reproduction, predator avoidance, and foraging (Zhang et al. 2016). For instance, a study assessing the impact of exposure to the herbicide 2,4-D on zebrafish has observed alterations in both the time spent in the upper zone and the distance traveled, disrupting their natural behavior (Thiel et al. 2020). Furthermore, a recent meta-analysis showed that fungicides decrease the locomotion in both zebrafish larvae and adults (Reis et al. 2023). In our study, there is no evidence that CF alters any locomotor parameter.

The SPT is widely used for investigating the effects of different interventions on zebrafish, given their innate schooling behavior and intricate social dynamics, including hierarchical and breeding relationships (Dreosti et al. 2015). Being a species with complex social interactions, zebrafish engage in social behaviors as a means of escaping predation and to facilitate reproduction (Dreosti et al. 2015). Given the critical role of social preference in this species, alterations in this behavior are highly relevant, making the SPT an ideal assay for studying interventions that may disrupt the natural behavior of zebrafish. Despite findings from previous studies indicating alterations in social behavior due to exposure to different pesticides (Yan et al. 2023; Liu et al. 2023), our study did not observe any changes following exposure to CF. Since social behavior is genetically preserved and has an ontogenic nature (Buske and Gerlai 2011; Scerbina et al. 2012), it is less vulnerable to low-impact modulations, such as the concentrations used in this study, where the highest concentration corresponds to 6% of the LC₅₀ of similar species, such as *Carassius auratus*, the goldfish (Dreosti et al. 2015; Valadas et al. 2023).

Reactive oxygen species are constantly produced during normal physiological events and are important in the brain signaling processes. High concentrations of oxidants can harm cell components ultimately resulting in physiological impairment and the disruption of normal cell functions. Neuronal membranes are rich in polyunsaturated fatty acids, which make the brain more vulnerable to lipid oxidation and to the damage caused by lipid peroxidation (Fedoce et al. 2018; Halliwell 2022). Within this study, there were no changes in the presented markers

of oxidative stress and cellular damage. However, different oxidative stress markers of interest have been shown to be impacted by CF exposure, such as SOD and CAT enzymes (Fedoce et al. 2018; Liu et al. 2020). Another crucial aspect to consider when discussing the results found here with those already reported in the literature is the animal experimentation protocol. This study followed OECD 203 (OECD 203, 2019), a guideline that regulates and standardizes toxicological exposure studies on zebrafish. This guideline advocates exposing the animals for 96 hours before commencing behavioral tests, avoiding the use of solvents in compound dilution, and avoiding any disturbance that may alter the animal's behavior. Several studies presented here did not follow these guidelines, such as the study conducted by Liu and collaborators (Liu et al. 2020), which exposed the animals for 48 hours and handled the animals to replace the aquarium water, which is a stressful factor for the animals and could be associated with some of the behavioral changes reported, as well as the studies by other research groups that also did not follow this standardized protocol (Hernández-Moreno et al. 2011; Clasen et al. 2014; Cui et al. 2019; Mendes et al. 2021).

Carbamates, including CF, act as reversible inhibitors of AChE, causing carbamylation of this enzyme. This carbamylation prevents the degradation of acetylcholine, allowing for its prolonged action in the synaptic cleft. Consequently, it leads to hyperexcitability of both nicotinic and muscarinic cholinergic receptors, resulting in cholinergic syndrome (Gupta 1994; Mishra et al. 2020). CF has consistently been shown to inhibit AChE in different fish species (Dembélé et al. 2000; Hernández-Moreno et al. 2011). Here, on the other hand, no alteration in the activity of AChE was measured after exposure to CF. This could be attributed to the enzymatic reactivation of AChE. The zebrafish's brain regeneration after injury is complex and has several repair mechanisms, as previously reported, which could be associated with the adaptation to the damage caused by CF after AChE reactivation and normalization of enzymatic activity (Ghosh and Hui 2016).

An important aspect to be discussed is the association of CF with other compounds. CF has been detected in various samples in combination with chlorpyrifos, 2,4-D, glyphosate, and other pesticides of great toxicological importance (Buch et al. 2013; Brovini et al. 2023). While our study focused on the effects of pure CF, it is noteworthy that CF can be found in commercial products alongside other substances, such as absorption promoters, which could influence its toxicological effects in real-world scenarios. The presence of absorption promoters and interactions between CF and other pesticides or pollutants may enhance CF uptake in aquatic organisms, potentially intensifying its toxic effects compared to exposures to pure CF. A study reports the interaction between CF and carbon nanotubes, where the association of these two

pollutants increases histological damage in Nile tilapia (*Oreochromis niloticus*) exposed to both compounds by 25% compared to animals exposed only to CF (Campos-Garcia et al. 2016). CF exposure in association with carbon nanotubes also significantly affected the metabolic routes of shrimp (*Palaemon pandaliformis*) (Alves et al. 2022). Synergic effects have been observed with the association between CF and cadmium (Wang et al. 2022). Although these compounds may exhibit either absence or low toxicity when isolated, synergism can occur in the environment leading to toxicity to non-target organisms. Therefore, further studies are needed to assess the potential synergistic effect of CF and other pesticides.

Conclusion

Although the results presented in this study do not show behavioral and biochemical changes, it is still necessary to study the effects of CF under conditions closer to the real environment where the pesticide is present and causing harm to non-target organisms. While our study contributes valuable insights, further research specifically addressing behavioral and neurochemical outcomes is needed to deepen our understanding of the effects of CF on adult zebrafish. To further contribute to the fields of toxicology and the environment, it is essential to study a broader range of concentrations of this compound and the alterations it induces in different outcomes. Additionally, studying longer exposure times to environmental concentrations and their transgenerational and long-term effects at different stages of zebrafish is crucial.

Author Contributions

Conceptualization: G.R.O., M.G.-L., and A.P. **Data curation:** G.R.O. and M.G.-L. **Formal analysis:** G.R.O., M.G.-L., and A.P. **Funding acquisition:** A.P. **Investigation:** G.R.O., M.G.-L., R.C., L.M.B., S.M.P., T.S.-B., and D.G. **Methodology:** G.R.O., M.G.-L., R.C., D.G., A.T.W., A.P.H., and A.P. **Project administration:** G.R.O., M.G.-L., and A.P. **Resources:** A.T.W. and A.P. **Supervision:** A.P. **Validation:** G.R.O., M.G.-L., and A.P. **Visualization:** G.R.O., M.G.-L., and A.P. **Writing - original draft:** G.R.O. and M.G.-L. **Writing - review & editing:** R.C., L.M.B., S.M.P., T.S.-B., D.G., R.G., A.T.W., A.P.H., and A.P.

Interest Statement

The authors declare no conflicts of interest.

Data Availability

All data are available in the Open Science Framework (osf.io/2dez8/).

Acknowledgments

The authors thank the Conselho Nacional de Desenvolvimento Científico e Tecnológico (CNPq, proc. 305968/2023-8), Coordenação de Aperfeiçoamento de Pessoal de Nível Superior - Brasil (CAPES), Instituto Nacional Saúde Cerebral (INSC, No. 406020/2022-1)/CNPq, and Pró-Reitoria de Pesquisa (PROPESQ) at Universidade Federal do Rio Grande do Sul (UFRGS) for funding and support.

References

- Abell A, Ernst E, Bonde JP (2000) Semen quality and sexual hormones in greenhouse workers. *Scand J Work Environ Health* 26:492–500. <https://doi.org/10.5271/sjweh.573>
- Alves KVB, Martinez DST, Alves OL, Barbieri E (2022) Co-exposure of carbon nanotubes with carbofuran pesticide affects metabolic rate in *Palaemon pandaliformis* (shrimp). *Chemosphere* 288:132359. <https://doi.org/10.1016/j.chemosphere.2021.132359>
- Benvenuti R, Gallas-Lopes M, Sachett A, et al (2021) How do zebrafish (*Danio rerio*) respond to MK-801 and amphetamine? Relevance for assessing schizophrenia-related endophenotypes in alternative model organisms. *J Neurosci Res* 99:2844–2859. <https://doi.org/10.1002/jnr.24948>
- Bertelli PR, Mocelin R, Marcon M, et al (2021) Anti-stress effects of the glucagon-like peptide-1 receptor agonist liraglutide in zebrafish. *Prog Neuropsychopharmacol Biol Psychiatry* 111:110388. <https://doi.org/10.1016/j.pnpbp.2021.110388>
- Brovini EM, Quadra GR, Paranaíba JR, et al (2023) Occurrence and environmental risk assessment of 22 pesticides in Brazilian freshwaters. *Aquat Toxicol* 260:106566. <https://doi.org/10.1016/j.aquatox.2023.106566>
- Buch AC, Brown GG, Niva CC, et al (2013) Toxicity of three pesticides commonly used in Brazil to *Pontoscolex corethrurus* (Müller, 1857) and *Eisenia andrei* (Bouché, 1972). *Appl Soil Ecol* 69:32–38. <https://doi.org/10.1016/j.apsoil.2012.12.011>
- Buske C, Gerlai R (2011) Shoaling develops with age in Zebrafish (*Danio rerio*). *Prog Neuropsychopharmacol Biol Psychiatry* 35:1409–1415. <https://doi.org/10.1016/j.pnpbp.2010.09.003>
- Cachat J, Stewart A, Grossman L, et al (2010) Measuring behavioral and endocrine responses to novelty stress in adult zebrafish. *Nat Protoc* 5:1786–1799.

<https://doi.org/10.1038/nprot.2010.140>

- Caioni G, Merola C, Perugini M, et al (2021) An Experimental Approach to Study the Effects of Realistic Environmental Mixture of Linuron and Propamocarb on Zebrafish Synaptogenesis. *Int J Environ Res Public Health* 18:4664. <https://doi.org/10.3390/ijerph18094664>
- Campos-Garcia J, Martinez DST, Rezende KFO, et al (2016) Histopathological alterations in the gills of Nile tilapia exposed to carbofuran and multiwalled carbon nanotubes. *Ecotoxicol Environ Saf* 133:481–488. <https://doi.org/10.1016/j.ecoenv.2016.07.041>
- Clasen B, Leitemperger J, Murussi C, et al (2014) Carbofuran promotes biochemical changes in carp exposed to rice field and laboratory conditions. *Ecotoxicol Environ Saf* 101:77–82. <https://doi.org/10.1016/j.ecoenv.2013.12.012>
- Cui J, Wang F, Gao J, et al (2019) Bioaccumulation and Metabolism of Carbosulfan in Zebrafish (*Danio rerio*) and the Toxic Effects of Its Metabolites. *J Agric Food Chem* 67:12348–12356. <https://doi.org/10.1021/acs.jafc.9b03674>
- Damalas CA, Eleftherohorinos IG (2011) Pesticide exposure, safety issues, and risk assessment indicators. *Int J Environ Res Public Health* 8(5):1402–19. <https://doi.org/10.3390/ijerph8051402>
- Dembélé K, Haubruge E, Gaspar C (2000) Concentration Effects of Selected Insecticides on Brain Acetylcholinesterase in the Common Carp (*Cyprinus carpio* L.). *Ecotoxicol Environ Saf* 45:49–54. <https://doi.org/10.1006/eesa.1999.1829>
- Drapeau P, Saint-Amant L, Buss RR, et al (2002) Development of the locomotor network in zebrafish. *Prog Neurobiol* 68:85–111. [https://doi.org/10.1016/S0301-0082\(02\)00075-8](https://doi.org/10.1016/S0301-0082(02)00075-8)
- Dreosti E, Lopes G, Kampff A, Wilson S (2015) Development of social behavior in young zebrafish. *Front Neural Circuits* 9:
- Dutra LS, Ferreira AP (2017) Associação entre malformações congênitas e a utilização de agrotóxicos em monoculturas no Paraná, Brasil. *Saúde Em Debate* 41:241–253. <https://doi.org/10.1590/0103-11042017S220>
- Ellman GL, Courtney KD, Andres V, Featherstone RM (1961) A new and rapid colorimetric determination of acetylcholinesterase activity. *Biochem Pharmacol* 7:88–95. [https://doi.org/10.1016/0006-2952\(61\)90145-9](https://doi.org/10.1016/0006-2952(61)90145-9)
- Fedoce A das G, Ferreira F, Bota RG, et al (2018) The role of oxidative stress in anxiety disorder: cause or consequence? *Free Radic Res* 52:737–750. <https://doi.org/10.1080/10715762.2018.1475733>
- Freire C, Koifman S (2013) Pesticides, depression and suicide: A systematic review of the

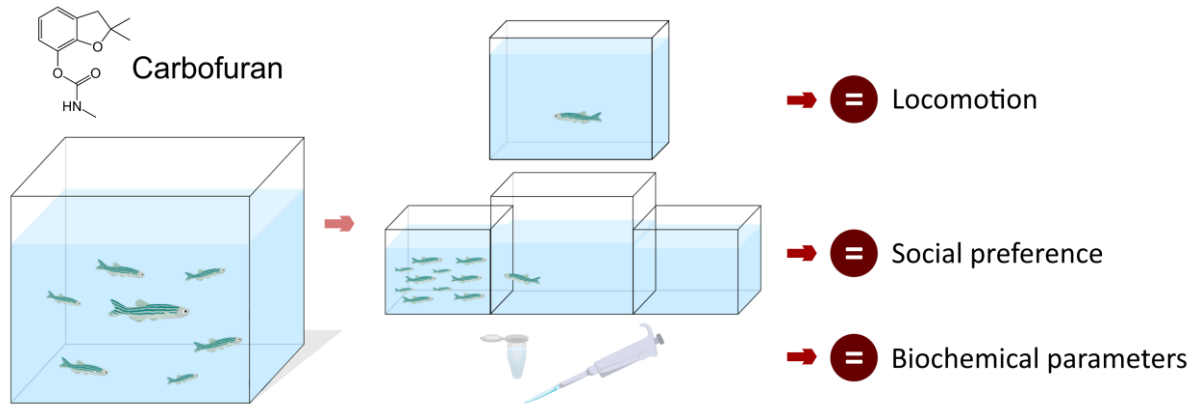
- epidemiological evidence. *Int J Hyg Environ Health* 216:445–460. <https://doi.org/10.1016/j.ijheh.2012.12.003>
- Galani YJH, Houbraken M, Wumbei A, et al (2020) Monitoring and dietary risk assessment of 81 pesticide residues in 11 local agricultural products from the 3 largest cities of Cameroon. *Food Control* 118:107416. <https://doi.org/10.1016/j.foodcont.2020.107416>
- Gebauer DL, Pagnussat N, Piato ÂL, et al (2011) Effects of anxiolytics in zebrafish: Similarities and differences between benzodiazepines, buspirone and ethanol. *Pharmacol Biochem Behav* 99:480–486. <https://doi.org/10.1016/j.pbb.2011.04.021>
- Ghosh S, Hui SP (2016) Regeneration of Zebrafish CNS: Adult Neurogenesis. *Neural Plast* 2016:e5815439. <https://doi.org/10.1155/2016/5815439>
- Giongo FK, Gallas-Lopes M, Benvenuti R, et al (2023) Effects of Taurine in Mice and Zebrafish Behavioral Assays With Translational Relevance to Schizophrenia. *Int J Neuropsychopharmacol* 26:125–136. <https://doi.org/10.1093/ijnp/pyac073>
- Goulart TLS, Boyle RT, Souza MM (2015) Cytotoxicity of the association of pesticides Roundup Transorb® and Furadan 350 SC® on the zebrafish cell line, ZF-L. *Toxicol In Vitro* 29:1377–1384. <https://doi.org/10.1016/j.tiv.2015.06.007>
- Grützmacher DD, Grützmacher AD, Agostinetti D, et al (2008) Monitoramento de agrotóxicos em dois mananciais hídricos no sul do Brasil. *Rev Bras Eng Agríc E Ambient* 12:632–637. <https://doi.org/10.1590/S1415-43662008000600010>
- Gupta RC (1994) Carbofuran toxicity. *J Toxicol Environ Health* 43:383–418. <https://doi.org/10.1080/15287399409531931>
- Halliwell B (2022) Reactive oxygen species (ROS), oxygen radicals and antioxidants: Where are we now, where is the field going and where should we go? *Biochem Biophys Res Commun* 633:17–19. <https://doi.org/10.1016/j.bbrc.2022.08.098>
- Hernández-Moreno D, Pérez-López M, Soler F, et al (2011) Effects of carbofuran on the sea bass (*Dicentrarchus labrax* L.): Study of biomarkers and behaviour alterations. *Ecotoxicol Environ Saf* 74:1905–1912. <https://doi.org/10.1016/j.ecoenv.2011.07.016>
- Hu L, Zhao Y, Xu H (2022) Trojan horse in the intestine: A review on the biotoxicity of microplastics combined environmental contaminants. *J Hazard Mater* 439:129652. <https://doi.org/10.1016/j.jhazmat.2022.129652>
- Johnson A, Loh E, Verbitsky R, et al (2023) Examining behavioural test sensitivity and locomotor proxies of anxiety-like behaviour in zebrafish. *Sci Rep* 13:3768. <https://doi.org/10.1038/s41598-023-29668-9>
- Kamel F, Tanner C, Umbach D, et al (2007) Pesticide Exposure and Self-reported Parkinson's

- Disease in the Agricultural Health Study. *Am J Epidemiol* 165:364–374. <https://doi.org/10.1093/aje/kwk024>
- Kysil EV, Meshalkina DA, Frick EE, et al (2017) Comparative Analyses of Zebrafish Anxiety-Like Behavior Using Conflict-Based Novelty Tests. *Zebrafish* 14:197–208. <https://doi.org/10.1089/zeb.2016.1415>
- Leary S, Pharmaceuticals F, Underwood W, et al (2020) AVMA Guidelines for the Euthanasia of Animals: 2020 Edition
- Liu S, Yu M, Xie X, et al (2020) Carbofuran induces increased anxiety-like behaviors in female zebrafish (*Danio rerio*) through disturbing dopaminergic/norepinephrinergic system. *Chemosphere* 253:126635. <https://doi.org/10.1016/j.chemosphere.2020.126635>
- Liu S-T, Horng J-L, Lin L-Y, Chou M-Y (2023) Fenpropathrin causes alterations in locomotion and social behaviors in zebrafish (*Danio rerio*). *Aquat Toxicol* 265:106756. <https://doi.org/10.1016/j.aquatox.2023.106756>
- Mansano AS, Moreira RA, Pierozzi M, et al (2016) Effects of diuron and carbofuran pesticides in their pure and commercial forms on *Paramecium caudatum*: The use of protozoan in ecotoxicology. *Environ Pollut* 213:160–172. <https://doi.org/10.1016/j.envpol.2015.11.054>
- Marcon M, Mocelin R, Benvenuti R, et al (2018) Environmental enrichment modulates the response to chronic stress in zebrafish. *J Exp Biol* 221:jeb176735. <https://doi.org/10.1242/jeb.176735>
- Mendes RC, Henriques MB, Barbieri E (2021) Carbofuran affects behavior and metabolism of the Atlantic Forest lambari *Deuterodon iguape*, a native species from Brazil. *Environ Sci Pollut Res* 28:61128–61136. <https://doi.org/10.1007/s11356-021-15071-2>
- Mishra S, Zhang W, Lin Z, et al (2020) Carbofuran toxicity and its microbial degradation in contaminated environments. *Chemosphere* 259:127419. <https://doi.org/10.1016/j.chemosphere.2020.127419>
- Mocelin R, Marcon M, da Rosa Araujo AS, et al (2019) Withdrawal effects following repeated ethanol exposure are prevented by N-acetylcysteine in zebrafish. *Prog Neuropsychopharmacol Biol Psychiatry* 93:161–170. <https://doi.org/10.1016/j.pnpbp.2019.03.014>
- Neves PDM, Mendonça MR, Bellini M, Pôssas IB (2020) Intoxicação por agrotóxicos agrícolas no estado de Goiás, Brasil, de 2005-2015: análise dos registros nos sistemas oficiais de informação. *Ciênc Saúde Coletiva* 25:2743–2754. <https://doi.org/10.1590/1413-81232020257.09562018>

- OECD (2019) Test No. 203: Fish, Acute Toxicity Test. Organisation for Economic Co-operation and Development, Paris
- Ong-Artborirak P, Boonchieng W, Juntarawijit Y, Juntarawijit C (2022) Potential Effects on Mental Health Status Associated with Occupational Exposure to Pesticides among Thai Farmers. *Int J Environ Res Public Health* 19:9654. <https://doi.org/10.3390/ijerph19159654>
- Otieno PO, Lalah JO, Virani M, et al (2010) Soil and water contamination with carbofuran residues in agricultural farmlands in Kenya following the application of the technical formulation Furadan. *J Environ Sci Health Part B* 45:137–144. <https://doi.org/10.1080/03601230903472058>
- Reis CG, Bastos LM, Chitolina R, et al (2023) Neurobehavioral effects of fungicides in zebrafish: a systematic review and meta-analysis. *Sci Rep* 13:18142. <https://doi.org/10.1038/s41598-023-45350-6>
- Reis CG, Mocelin R, Benvenuti R, et al (2020) Effects of N-acetylcysteine amide on anxiety and stress behavior in zebrafish. *Naunyn Schmiedebergs Arch. Pharmacol.* 93:591-601. <https://doi.org/10.1007/s00210-019-01762-8>
- Rolim G, Gallas-Lopes M, Chitolina R, et al (2023) Evaluation of behavioral and neurochemical changes induced by carbofuran in zebrafish (*Danio rerio*). <https://doi.org/10.17605/OSF.IO/2DEZ8>
- Sachett A, Benvenuti R, Reis CG, et al (2022) Micronized Curcumin Causes Hyperlocomotion in Zebrafish Larvae. *Neurochem Res* 47:2307–2316. <https://doi.org/10.1007/s11064-022-03618-9>
- Sachett A, Conterato GMM, Radharani, et al (2021) Quantification of nonprotein sulfhydryl groups (NPSH) optimized for zebrafish brain tissue
- Sachett A, Gallas-Lopes M, Conterato GMM, et al (2020a) Protein quantification protocol optimized for zebrafish brain tissue (Bradford method)
- Sachett A, Gallas-Lopes M, Conterato GMM, et al (2020b) Quantification of thiobarbituric acid reactive species (TBARS) optimized for zebrafish brain tissue
- Sachett A, Gallas-Lopes M, Radharani, et al (2020c) How to prepare zebrafish brain tissue samples for biochemical assays
- Scerbina T, Chatterjee D, Gerlai R (2012) Dopamine receptor antagonism disrupts social preference in zebrafish: a strain comparison study. *Amino Acids* 43:2059–2072. <https://doi.org/10.1007/s00726-012-1284-0>
- Song W, Jia C, Jing J, et al (2018) Residue behavior and dietary intake risk assessment of

- carbosulfan and its metabolites in cucumber. *Regul Toxicol Pharmacol* 95:250–253. <https://doi.org/10.1016/j.yrtph.2018.03.023>
- Tang F, Gao M, Zeng F, et al (2021) An old story with new insights into an ignored issue of metabolites in biochar-amended soil: Effect of biochar on dissipation of carbosulfan as an example. *Sci Total Environ* 790:148100. <https://doi.org/10.1016/j.scitotenv.2021.148100>
- Thiel NA, Sachett A, Schneider SE, et al (2020) Exposure to the herbicide 2,4-dichlorophenoxyacetic acid impairs mitochondrial function, oxidative status, and behavior in adult zebrafish. *Environ Sci Pollut Res* 27:45874–45882. <https://doi.org/10.1007/s11356-020-10497-6>
- Valadas J, Sachett A, Marcon M, et al (2023) Ochratoxin A induces locomotor impairment and oxidative imbalance in adult zebrafish. *Environ Sci Pollut Res* 30:21144–21155. <https://doi.org/10.1007/s11356-022-23692-4>
- Vryzas Z (2018) Pesticide fate in soil-sediment-water environment in relation to contamination preventing actions. *Curr Opin Environ Sci Health* 4:5–9. <https://doi.org/10.1016/j.coesh.2018.03.001>
- Wang Y, Weng Y, Lv L, et al (2022) Transgenerational effects of co-exposure to cadmium and carbofuran on zebrafish based on biochemical and transcriptomic analyses. *J Hazard Mater* 439:129644. <https://doi.org/10.1016/j.jhazmat.2022.129644>
- Wen X, Ma C, Sun M, et al (2021) Pesticide residues in the pollen and nectar of oilseed rape (*Brassica napus* L.) and their potential risks to honey bees. *Sci Total Environ* 786:147443. <https://doi.org/10.1016/j.scitotenv.2021.147443>
- Xiong R-G, Li J, Cheng J, et al (2023) New insights into the protection of dietary components on anxiety, depression, and other mental disorders caused by contaminants and food additives. *Trends Food Sci Technol* 138:44–56. <https://doi.org/10.1016/j.tifs.2023.06.004>
- Yan W, Li G, Lu Q, et al (2023) Molecular Mechanisms of Tebuconazole Affecting the Social Behavior and Reproduction of Zebrafish. *Int J Environ Res Public Health* 20:3928. <https://doi.org/10.3390/ijerph20053928>
- Zhang CP, He HM, Yu JZ, et al (2016) Residues of carbosulfan and its metabolites carbofuran and 3-hydroxy carbofuran in rice field ecosystem in China. *J Environ Sci Health Part B* 51:351–357. <https://doi.org/10.1080/03601234.2015.1120606>

Figures



Graphical abstract.

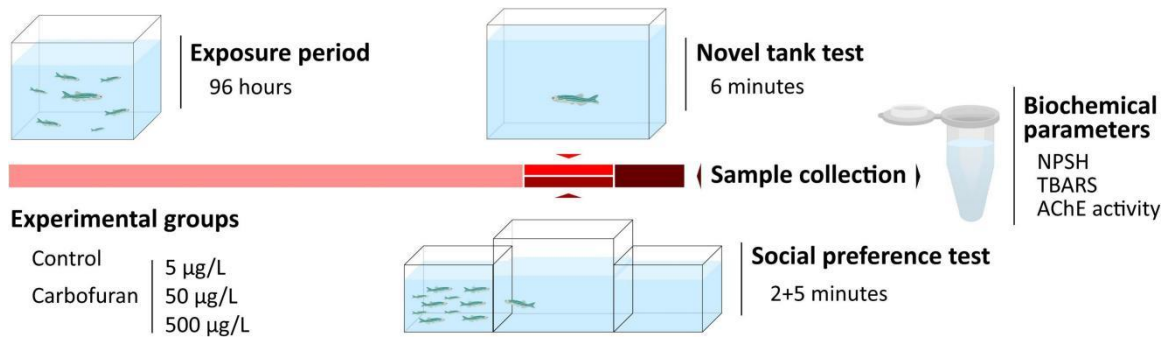


Figure 1. Overview of the experimental design evaluating the effects of acute carbofuran exposure to zebrafish. NPSH = Non-protein sulfhydryl groups; TBARS = Thiobarbituric acid reactive species; AChE = Acetylcholinesterase.

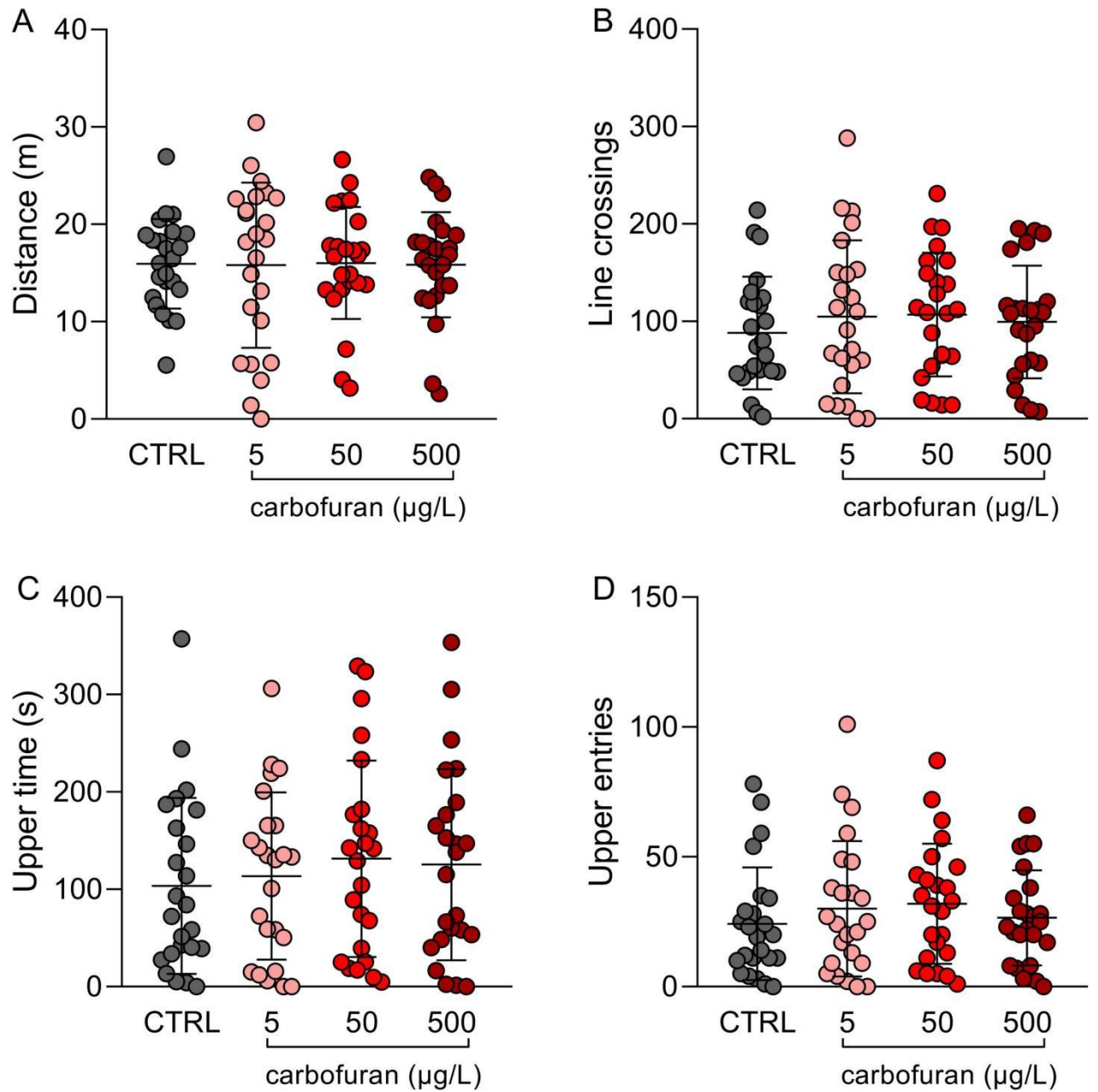


Figure 2. Effects of carbofuran (5, 50, and 500 µg/L) on behavioral parameters in the Novel Tank Test. (A) Distance, (B) Line crossings, (C) Upper time, (D) Upper entries. Data are expressed as mean ± S.D. One-way ANOVA. n=24. CTRL = Control.

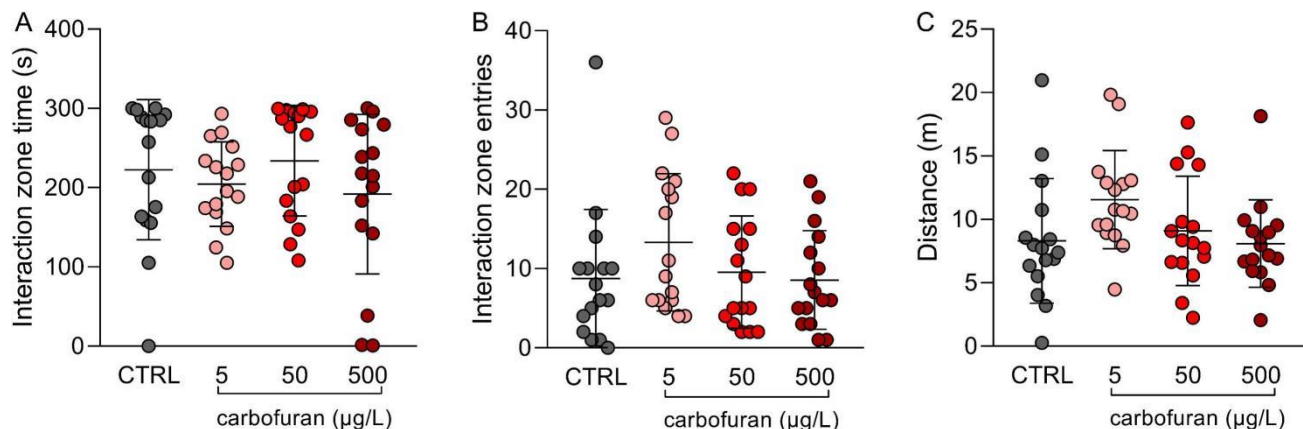


Figure 3. Effects of carbofuran (5, 50, and 500 µg/L) on behavioral parameters in the Social Preference Test. (A) Interaction time, (B) Interaction entries, and (C) Distance. Data are expressed as mean ± S.D. One-way ANOVA. n=16. CTRL = Control.

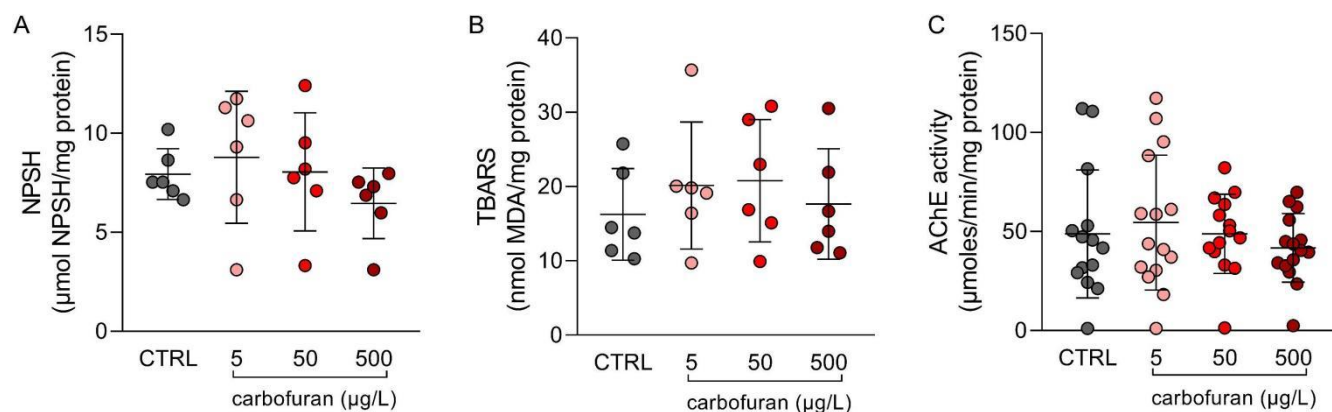


Figure 4. Effects of carbofuran (5, 50, and 500 µg/L) on neurochemical parameters. (A) NPSH (Non-protein sulphydryl groups), (B) TBARS (Thiobarbituric acid reactive species), (C) AChE (Acetylcholinesterase) activity. Data are expressed as mean ± S.D. One-way ANOVA. n=6 for NPSH and TBARS, n=14-15 for AChE (n=14 CTRL; n=15 CF5; n=14 CF50; n=15 CF500). CTRL = Control.

Tables

Table 1. Summary of the one-way ANOVAs for the NTT and SPT.

Test	Dependent Variable	F-Value	DF	p-value
NTT	Distance	0.005784	3, 92	0.9994
	Line crossings	0.4002	3, 92	0.7531
	Upper time	0.4235	3, 92	0.7366
	Upper entries	0.5735	3, 92	0.6339
SPT	Time in the interaction zone	0.8752	3, 60	0.4591
	Interaction zone entries	1.315	3, 60	0.2780
	Distance	2.320	3, 60	0.0844

DF = Degrees of freedom; NTT = Novel Tank Test, SPT = Social Preference Test

Table 2. Summary of the one-way ANOVAs for the neurochemical analyses.

Test	F-Value	DF	p-value
NSPH	0.9166	3, 20	0.4507
TBARS	0.4635	3, 20	0.7109
AChE activity	0.5667	3, 54	0.6393

DF = Degrees of freedom; NPSH = Non-protein sulfhydryl groups; TBARS = Thiobarbituric acid reactive species; AChE = Acetylcholinesterase.

4. DISCUSSÃO

Esse estudo avaliou os efeitos do carbofurano em concentrações ambientais em peixes-zebra machos e fêmeas adultos. Nas concentrações estudadas, carbofurano não alterou o comportamento dos peixes-zebra nos testes de tanque novo e comportamento social. Nas análises neuroquímicas, o carbofurano não induziu efeitos nos parâmetros analisados.

O teste de tanque novo é amplamente utilizado para avaliar parâmetros locomotores e ansiedade em peixes-zebra (Marcon et al., 2016; Mocelin et al., 2019b; Yoshida, 2022). Nesse teste, o animal tende a explorar porções inferiores (fundo) do aquário inicialmente e, com o passar do tempo, explorar zonas superiores, ou seja, mais próximas da superfície. Intervenções que reduzem a ansiedade causam um aumento na exploração da zona superior do aquário, enquanto intervenções ansiogênicas causam comportamento oposto (Anwer et al, 2021; Bertelli et al., 2021; Marcon et al., 2018). Estudos mostraram que a exposição ao carbofurano (5, 50 e 500 µg/L) por 48 horas diminuiu o tempo de permanência no topo do aquário bem como o número de entradas, além de aumentar o número de movimentos erráticos em peixes-zebra adultos (Liu et al., 2020). Já a exposição em larvas de 3 horas pós fertilização por 96 horas a concentrações subletais (0,01, 0,1 e 1 mg/L) de carbaril (outro composto carbamato) não alterou o padrão de nado no teste de tanque novo quando adultos (Correia et al., 2019). Em uma exposição de 96 horas à concentração de 165 mg/L de carbofurano em gambusias (peixes de água doce) houve uma redução na velocidade e na distância percorrida (Nunes, 2020).

O comportamento social é importante e garante a coesão do cardume, auxilia na busca por alimento e por parceiros para reprodução e a confere maior segurança aos peixes-zebra. O teste de preferência social é uma ferramenta que auxilia no estudo de endofenótipos relacionados a doenças neuropsiquiátricas e pode ser modulado pela exposição a fármacos, drogas, pesticidas e hormônios (Benvenuti et al., 2020; Do Nascimento and Maximino, 2023). No nosso trabalho, não foram observados efeitos significativos no teste de preferência social. Esse achado pode estar atrelado ao fato de que o comportamento social do animal é complexo e dependente de diversos fatores, como pistas visuais, olfatórias e de substâncias de alerta liberada pelos seus coespecíficos (Engeszer et al., 2007; Engeszer et al., 2004; Valadas et al., 2022). A concentração usada aqui foi cerca de 6% da DL50 de espécies similares ao peixe-zebra, o que pode ser insuficiente para alterar o comportamento em 96 horas de exposição (Dreosti et al., 2015; Valadas et al., 2022).

O dano por espécies reativas de oxigênio causada por agentes exógenos normalmente é prevenido por sistemas antioxidantes (Fedoce et al., 2018; Halliwell, 2022; Severo et al, 2020).

Estudos demonstram a ação de carbofurano no estado oxidativo, com aumento de GST (glutathione S-transferase, enzima envolvida no processo de biotransformação de xenobióticos) em larvas de peixe-zebra expostas a 96 horas na água coletada do rio Vacacaí, em Santa Maria (Brasil) (Severo et al, 2020), com a diminuição de defesas enzimáticas como SOD (superóxido dismutase), CAT (catalase) e GST no fígado de ratos que foram expostos durante 28 dias a 1,5 mg/kg de carbofurano (Mondal et al., 2021). Em peixes-zebra adultos expostos a 0,0097 mg/L de carbofurano por 96 horas, houve o aumento da SOD hepática (Wang et al., 2022). Um estudo realizado em encéfalos de peixe-zebras expostos a carbofurano (10 e 100 µg/L) durante 90 dias mostrou aumento nos níveis de GSH e diminuição da atividade da AChE (Hernández-Moreno et al., 2011).

A acetilcolinesterase (AChE) é uma enzima importante para o adequado funcionamento das sinapses colinérgicas presentes no sistema nervoso central e periférico. Estudos demonstram a diminuição dessa enzima no encéfalo de carpas após exposição por 96 horas de carbofurano (1 mg/L), além da diminuição da atividade enzimática com exposição a outros pesticidas, o diazinon (1,9 mg/L) e clorpirifós (3,6 mg/L) (Dembélé et al., 2000). Um estudo realizado em carpas que foram expostas a 50 µg/L da formulação comercial de carbofurano durante 30 dias, mostrou a diminuição nos níveis de AChE quando analisadas no cérebro e músculo (Clasen et al, 2014). Tencas expostas a três diferentes níveis de carbofurano (0, 10 e 100 µg/L) durante 90 dias exibiu uma diminuição da atividade da AChE (Hernandez-Moreno et al, 2010). Este mesmo estudo demonstrou através de um ensaio de reativação da AChE, onde os valores demonstraram-se maiores que os controles após a reativação, indicando que possa existir uma reativação ou superprodução de AChE, como alguns autores sugerem, como sistema de proteção para neutralizar o efeito tóxico.

Esse trabalho apresenta algumas limitações que serão descritas a seguir. Uma limitação do presente estudo foi o uso do composto químico isolado, ao invés do uso de fórmulas comerciais que são normalmente utilizadas na agricultura e as quais os animais estão expostos. Carbofurano apresenta diferença de toxicidade quando comparado a sua formulação comercial, o Furadan®. Estudos realizados em *Paramecium caudatum* (um protozoário ciliado) demonstram que a formulação comercial foi mais tóxica do que o ingrediente ativo, causando aumento da mortalidade (Mansano et al., 2016) e diminuição da taxa de crescimento corporal e reprodução dos protozoários (Mansano et al., 2020). Em associação com nanotubos de carbono, o carbofurano aumentou em 25% o dano histológico nas guelras de tilápias expostas a ambos os compostos em comparação com a exposição única ao pesticida. Estes danos

histológicos incluíram o deslocamento de células epiteliais, hiperplasia celular, aneurisma, dilatação e desalinhamento dos capilares. Todos os grupos demonstraram uma relação dose-dependente com as alterações histológicas (Campos-Garcia et al., 2016). Já o carbofurano combinado com cádmio induziu efeitos agudos sinérgicos, aumentando marcadores de estresse oxidativo (SOD e CAT), efeitos endócrinos (aumento de vitelogenina e tiroxina no fígado de peixes-zebra fêmeas) e aumento do apoptose celular em peixes-zebra adultos e em estágios larvais (Wang et al., 2022). Outra limitação refere-se ao tempo de exposição para a indução de alterações nos parâmetros avaliados. Dessa forma, mais estudos são necessários para determinar os efeitos das preparações comerciais contendo esse pesticida bem como a exposição em longo prazo nessa espécie.

5. CONCLUSÃO

O carbofurano, nas condições testadas aqui, não alterou o comportamento dos animais nos testes de tanque novo e de preferência social. Além disso, não houve alterações significativas nos níveis de tióis não-proteicos, substâncias reativas ao ácido tiobarbitúrico e atividade da acetilcolinesterase em encéfalos de peixes-zebra adultos. Mais estudos são necessários para determinar o impacto de preparações comerciais contendo esse pesticida, bem como a exposição a longo prazo sobre os parâmetros avaliados nesse trabalho.

6. REFERÊNCIAS

- Abell, A., Ernst, E., Bonde, J.P., 2000. Semen quality and sexual hormones in greenhouse workers. *Scand. J. Work. Environ. Health* 26, 492–500. <https://doi.org/10.5271/sjweh.573>
- Albuquerque, A.F., Ribeiro, J.S., Kummrow, F., Nogueira, A.J.A., Montagner, C.C., Umbuzeiro, G.A., 2016. Pesticides in Brazilian freshwaters: a critical review. *Environ. Sci. Process. Impacts* 18, 779–787. <https://doi.org/10.1039/c6em00268d>
- Alves, K.V.B., Martinez, D.S.T., Alves, O.L., Barbieri, E., 2022. Co-exposure of carbon nanotubes with carbofuran pesticide affects metabolic rate in *Palaemon pandaliformis* (shrimp). *Chemosphere* 288, 132359. <https://doi.org/10.1016/j.chemosphere.2021.132359>
- Anwer et al, 2021. An efficient new assay for measuring zebrafish anxiety: Tall tanks that better characterize between-individual differences. *J. Neurosci. Methods* 356, 109138. <https://doi.org/10.1016/j.jneumeth.2021.109138>
- Baligar, P.N., Kaliwal, B.B., 2002. Reproductive Toxicity of Carbofuran to the Female Mice: Effects on Estrous Cycle and Follicles. *Ind. Health* 40, 345–352. <https://doi.org/10.2486/indhealth.40.345>
- Baltazar, M.T., Dinis-Oliveira, R.J., De Lourdes Bastos, M., Tsatsakis, A.M., Duarte, J.A., Carvalho, F., 2014. Pesticides exposure as etiological factors of Parkinson's disease and other neurodegenerative diseases—A mechanistic approach. *Toxicol. Lett.* 230, 85–103. <https://doi.org/10.1016/j.toxlet.2014.01.039>
- Barcellos, H.H. de A., Pompermaier, A., Mendonça-Soares, S., Maffi, V.C., Fernandes, M., Koakoski, G., Kirsten, K., Baldisserotto, B., Barcellos, L.J.G., 2020. Aripiprazole prevents stress-induced anxiety and social impairment, but impairs antipredatory behavior in zebrafish. *Pharmacol. Biochem. Behav.* 189, 172841. <https://doi.org/10.1016/j.pbb.2019.172841>
- Benvenuti, R., Gallas-Lopes, M., Sachett, A., Marcon, M., Strogulski, N.R., Reis, C.G.R., Chitolina, R., Piato, A., Herrmann, A.P., 2020. How do zebrafish respond to MK-801 and amphetamine? Relevance for assessing schizophrenia-relevant endophenotypes in alternative model organisms. <https://doi.org/10.1101/2020.08.03.234567>
- Bertelli, P.R., Mocelin, R., Marcon, M., Sachett, A., Gomez, R., Rosa, A.R., Herrmann, A.P., Piato, A., 2021. Anti-stress effects of the glucagon-like peptide-1 receptor agonist liraglutide in zebrafish. *Prog. Neuropsychopharmacol. Biol. Psychiatry* 111, 110388. <https://doi.org/10.1016/j.pnpbp.2021.110388>
- Brovini, E.M., Quadra, G.R., Paranaíba, J.R., Carvalho, L., Pereira, R.D.O., De Aquino, S.F., 2023. Occurrence and environmental risk assessment of 22 pesticides in Brazilian freshwaters. *Aquat. Toxicol.* 260, 106566. <https://doi.org/10.1016/j.aquatox.2023.106566>
- Buch, A.C., Brown, G.G., Niva, C.C., Sautter, K.D., Sousa, J.P., 2013. Toxicity of three pesticides commonly used in Brazil to *Pontosclex corethrurus* (Müller, 1857) and *Eisenia andrei* (Bouché, 1972). *Appl. Soil Ecol., Progress and Priorities in Latin American Oligochaete Research* 69, 32–38. <https://doi.org/10.1016/j.apsoil.2012.12.011>
- Buske, C., Gerlai, R., 2011. Shoaling develops with age in Zebrafish (*Danio rerio*). *Prog. Neuropsychopharmacol. Biol. Psychiatry* 35, 1409–1415. <https://doi.org/10.1016/j.pnpbp.2010.09.003>
- Caioni, G., Merola, C., Perugini, M., d'Angelo, M., Cimini, A.M., Amorena, M., Benedetti, E., 2021. An Experimental Approach to Study the Effects of Realistic Environmental

- Mixture of Linuron and Propamocarb on Zebrafish Synaptogenesis. *Int. J. Environ. Res. Public Health* 18, 4664. <https://doi.org/10.3390/ijerph18094664>
- Campbell, S., David, M.D., Woodward, L.A., Li, Q.X., 2004. Persistence of carbofuran in marine sand and water. *Chemosphere* 54, 1155–1161. <https://doi.org/10.1016/j.chemosphere.2003.09.018>
- Campos-Garcia, J., Martinez, D.S.T., Rezende, K.F.O., Da Silva, J.R.M.C., Alves, O.L., Barbieri, E., 2016. Histopathological alterations in the gills of Nile tilapia exposed to carbofuran and multiwalled carbon nanotubes. *Ecotoxicol. Environ. Saf.* 133, 481–488. <https://doi.org/10.1016/j.ecoenv.2016.07.041>
- Cancino, J., Soto, K., Tapia, J., Muñoz-Quezada, M.T., Lucero, B., Contreras, C., Moreno, J., 2023. Occupational exposure to pesticides and symptoms of depression in agricultural workers. A systematic review. *Environ. Res.* 231, 116190. <https://doi.org/10.1016/j.envres.2023.116190>
- Castilla-Fernández, D., Moreno-González, D., Gilbert-López, B., García-Reyes, J.F., Molina-Díaz, A., 2021. Worldwide survey of pesticide residues in citrus-flavored soft drinks. *Food Chem.* 365, 130486. <https://doi.org/10.1016/j.foodchem.2021.130486>
- Clasen, B., Leitemperger, J., Murussi, C., Pretto, A., Menezes, C., Dalabona, F., Marchezan, E., Adaime, M.B., Zanella, R., Loro, V.L., 2014. Carbofuran promotes biochemical changes in carp exposed to rice field and laboratory conditions. *Ecotoxicol. Environ. Saf.* 101, 77–82. <https://doi.org/10.1016/j.ecoenv.2013.12.012>
- Correia, D., Almeida, A.R., Santos, J., Machado, A.L., Koba Uzun, O., Žlábek, V., Oliveira, M., Domingues, I., 2019. Behavioral effects in adult zebrafish after developmental exposure to carbaryl. *Chemosphere* 235, 1022–1029. <https://doi.org/10.1016/j.chemosphere.2019.07.029>
- Craske, M.G., Stein, M.B., Eley, T.C., Milad, M.R., Holmes, A., Rapee, R.M., Wittchen, H.-U., 2017. Anxiety disorders. *Nat. Rev. Dis. Primer* 3, 17024. <https://doi.org/10.1038/nrdp.2017.24>
- Cui, J., Wang, F., Gao, J., Zhai, W., Zhou, Z., Liu, D., Wang, P., 2019. Bioaccumulation and Metabolism of Carbosulfan in Zebrafish (*Danio rerio*) and the Toxic Effects of Its Metabolites. *J. Agric. Food Chem.* 67, 12348–12356. <https://doi.org/10.1021/acs.jafc.9b03674>
- D'Agostinho, A., Flues, M., 2006. Determinação do coeficiente de distribuição (Kd) de benzo(a)pireno em solo por isotermas de sorção. *Quím. Nova* 29, 657–661. <https://doi.org/10.1590/S0100-40422006000400006>
- Dembélé, K., Haubruge, E., Gaspar, C., 2000. Concentration Effects of Selected Insecticides on Brain Acetylcholinesterase in the Common Carp (*Cyprinus carpio* L.). *Ecotoxicol. Environ. Saf.* 45, 49–54. <https://doi.org/10.1006/eesa.1999.1829>
- Do Nascimento, B.G., Maximino, C., 2023. Social investigation and social novelty in zebrafish: Roles of salience and novelty. *Behav. Processes* 210, 104903. <https://doi.org/10.1016/j.beproc.2023.104903>
- Drapeau, P., Saint-Amant, L., Buss, R.R., Chong, M., McDearmid, J.R., Brustein, E., 2002. Development of the locomotor network in zebrafish. *Prog. Neurobiol.* 68, 85–111. [https://doi.org/10.1016/S0301-0082\(02\)00075-8](https://doi.org/10.1016/S0301-0082(02)00075-8)
- Dreosti, E., Lopes, G., Kampff, A., Wilson, S., 2015. Development of social behavior in young zebrafish. *Front. Neural Circuits* 9.
- Dutra, L.S., Ferreira, A.P., 2017. Associação entre malformações congênitas e a utilização de agrotóxicos em monoculturas no Paraná, Brasil. *Saúde Em Debate* 41, 241–253. <https://doi.org/10.1590/0103-11042017s220>

- Ellman, G.L., Courtney, K.D., Andres, V., Feather-Stone, R.M., 1961. A new and rapid colorimetric determination of acetylcholinesterase activity. *Biochem. Pharmacol.* 7, 88–95. [https://doi.org/10.1016/0006-2952\(61\)90145-9](https://doi.org/10.1016/0006-2952(61)90145-9)
- ENGESZER, R.E., BARBIANO, L.A.D., RYAN, M.J., PARICHY, D.M., 2007. Timing and plasticity of shoaling behaviour in the zebrafish, *Danio rerio*. *Anim. Behav.* 74, 1269–1275. <https://doi.org/10.1016/j.anbehav.2007.01.032>
- Engeszer, R.E., Ryan, M.J., Parichy, D.M., 2004. Learned Social Preference in Zebrafish. *Curr. Biol.* 14, 881–884. <https://doi.org/10.1016/j.cub.2004.04.042>
- FAO, WHO, 2022. Manual on the development and use of FAO and WHO specifications for chemical pesticides. FAO, WHO, Rome, Italy. <https://doi.org/10.4060/cb8401en>
- Faria, N.M.X., Fassa, A.G., Meucci, R.D., 2014. Association between pesticide exposure and suicide rates in Brazil. *NeuroToxicology* 45, 355–362. <https://doi.org/10.1016/j.neuro.2014.05.003>
- Fedoce, A. das G., Ferreira, F., Bota, R.G., Bonet-Costa, V., Sun, P.Y., Davies, K.J.A., 2018. THE ROLE OF OXIDATIVE STRESS IN ANXIETY DISORDER: CAUSE OR CONSEQUENCE? *Free Radic. Res.* 52, 737–750. <https://doi.org/10.1080/10715762.2018.1475733>
- Fenoll, J., Hellín, P., Flores, P., Martínez, C.M., Navarro, S., 2013. Degradation intermediates and reaction pathway of carbofuran in leaching water using TiO₂ and ZnO as photocatalyst under natural sunlight. *J. Photochem. Photobiol. Chem.* 251, 33–40. <https://doi.org/10.1016/j.jphotochem.2012.10.012>
- Freire, C., Koifman, S., 2013. Pesticides, depression and suicide: a systematic review of the epidemiological evidence. *Int. J. Hyg. Environ. Health* 216, 445–460. <https://doi.org/10.1016/j.ijheh.2012.12.003>
- Galani, Y.J.H., Houbraken, M., Wumbei, A., Djeugap, J.F., Fotio, D., Gong, Y.Y., Spanoghe, P., 2020. Monitoring and dietary risk assessment of 81 pesticide residues in 11 local agricultural products from the 3 largest cities of Cameroon. *Food Control* 118, 107416. <https://doi.org/10.1016/j.foodcont.2020.107416>
- Ghosh, S., Hui, S.P., 2016. Regeneration of Zebrafish CNS: Adult Neurogenesis. *Neural Plast.* 2016, 1–21. <https://doi.org/10.1155/2016/5815439>
- Giongo, F.K., Gallas-Lopes, M., Benvenuti, R., Sachett, A., Bastos, L.M., Rosa, A.R., Herrmann, A.P., 2023. Effects of Taurine in Mice and Zebrafish Behavioral Assays With Translational Relevance to Schizophrenia. *Int. J. Neuropsychopharmacol.* 26, 125–136. <https://doi.org/10.1093/ijnp/pyac073>
- Goulart, T.L.S., Boyle, R.T., Souza, M.M., 2015. Cytotoxicity of the association of pesticides Roundup Transorb® and Furadan 350 SC® on the zebrafish cell line, ZF-L. *Toxicol. In Vitro* 29, 1377–1384. <https://doi.org/10.1016/j.tiv.2015.06.007>
- Grützmacher, D.D., Grützmacher, A.D., Agostinetto, D., Loock, A.E., Roman, R., Peixoto, S.C., Zanella, R., 2008. Monitoramento de agrotóxicos em dois mananciais hídricos no sul do Brasil. *Rev. Bras. Eng. Agríc. E Ambient.* 12, 632–637. <https://doi.org/10.1590/S1415-43662008000600010>
- Halliwell, B., 2022. Reactive oxygen species (ROS), oxygen radicals and antioxidants: Where are we now, where is the field going and where should we go? *Biochem. Biophys. Res. Commun., Horizons in Biochemistry & Biophysics. Special Issue in Honor of Prof. Ernesto Carafoli* 633, 17–19. <https://doi.org/10.1016/j.bbrc.2022.08.098>
- Hernández-Moreno, D., Pérez-López, M., Soler, F., Gravato, C., Guilhermino, L., 2011. Effects of carbofuran on the sea bass (*Dicentrarchus labrax* L.): study of biomarkers and behaviour alterations. *Ecotoxicol. Environ. Saf.* 74, 1905–1912. <https://doi.org/10.1016/j.ecoenv.2011.07.016>

- Hu, L., Zhao, Y., Xu, H., 2022. Trojan horse in the intestine: A review on the biotoxicity of microplastics combined environmental contaminants. *J. Hazard. Mater.* 439, 129652. <https://doi.org/10.1016/j.jhazmat.2022.129652>
- Iesce, M.R., Greca, M. della, Cermola, F., Rubino, M., Isidori, M., Pascarella, L., 2006. Transformation and Ecotoxicity of Carbamic Pesticides in Water (5 pp). *Environ. Sci. Pollut. Res.* 13, 105–109. <https://doi.org/10.1065/espr2005.10.285>
- INSTITUTO NACIONAL DE CÂNCER JOSÉ ALENCAR GOMES DA SILVA. Ambiente, trabalho e câncer: aspectos epidemiológicos, toxicológicos e regulatórios / Instituto Nacional de Câncer José Alencar Gomes da Silva. – Rio de Janeiro: INCA, 202
- Kamboj, S.S., Kumar, V., Kamboj, A., Sandhir, R., 2008. Mitochondrial Oxidative Stress and Dysfunction in Rat Brain Induced by Carbofuran Exposure. *Cell. Mol. Neurobiol.* 28, 961–969. <https://doi.org/10.1007/s10571-008-9270-5>
- Kamel, F., Tanner, C., Umbach, D., Hoppin, J., Alavanja, M., Blair, A., Comyns, K., Goldman, S., Korell, M., Langston, J., Ross, G., Sandler, D., 2007. Pesticide exposure and self-reported Parkinson's disease in the agricultural health study. *Am. J. Epidemiol.* 165, 364–374. <https://doi.org/10.1093/aje/kwk024>
- Kumar, V., Sharma, N., Sharma, P., Pasrija, R., Kaur, K., Umesh, M., Thazeem, B., 2023. Toxicity analysis of endocrine disrupting pesticides on non-target organisms: A critical analysis on toxicity mechanisms. *Toxicol. Appl. Pharmacol.* 474, 116623. <https://doi.org/10.1016/j.taap.2023.116623>
- Leary, S., Pharmaceuticals, F., Underwood, W., Anthony, R., Cartner, S., Johnson, C.L., Patterson-Kane, E., 2020. AVMA Guidelines for the Euthanasia of Animals: 2020 Edition.
- Lehel, J., Laczay, P., Déri, J., Darin, E.G., Budai, P., 2010. Model Study on the Clinical Signs and Residue Concentrations of Sublethal Carbofuran Poisoning in Birds. *J. Wildl. Dis.* 46, 1274–1278. <https://doi.org/10.7589/0090-3558-46.4.1274>
- Lewis, K.A., Tzilivakis, J., Warner, D.J., Green, A., 2016. An international database for pesticide risk assessments and management. *Hum. Ecol. Risk Assess. Int. J.* 22, 1050–1064. <https://doi.org/10.1080/10807039.2015.1133242>
- Liu, S., Yu, M., Xie, X., Ru, Y., Ru, S., 2020. Carbofuran induces increased anxiety-like behaviors in female zebrafish (*Danio rerio*) through disturbing dopaminergic/norepinephrinergic system. *Chemosphere* 253, 126635. <https://doi.org/10.1016/j.chemosphere.2020.126635>
- M. Araújo, C.R., L. A. Santos, V., A. Gonsalves, A., 2016. Acetylcholinesterase - AChE: A Pharmacological Interesting Enzyme. *Rev. Virtual Quím.* 8, 1818–1834. <https://doi.org/10.21577/1984-6835.20160122>
- Mansano, A. da S., 2016. Efeitos dos agrotóxicos diuron e carbofuran, isolados e em mistura, sobre organismos aquáticos e avaliação de risco ecológico.
- Mansano, A.S., Moreira, R.A., Dornfeld, H.C., Freitas, E.C., Vieira, E.M., Daam, M.A., Rocha, O., Selegim, M.H.R., 2020. Individual and mixture toxicity of carbofuran and diuron to the protozoan *Paramecium caudatum* and the cladoceran *Ceriodaphnia silvestrii*. *Ecotoxicol. Environ. Saf.* 201, 110829. <https://doi.org/10.1016/j.ecoenv.2020.110829>
- Mansano, A.S., Moreira, R.A., Pierozzi, M., Oliveira, T.M.A., Vieira, E.M., Rocha, O., Regali-Selegim, M.H., 2016. Effects of diuron and carbofuran pesticides in their pure and commercial forms on *Paramecium caudatum*: The use of protozoan in ecotoxicology. *Environ. Pollut. Barking Essex* 1987 213, 160–172. <https://doi.org/10.1016/j.envpol.2015.11.054>
- Marcon, M., Herrmann, A.P., Mocelin, R., Rambo, C.L., Koakoski, G., Abreu, M.S., Conterato, G.M.M., Kist, L.W., Bogo, M.R., Zanatta, L., Barcellos, L.J.G., Piato, A.L., 2016. Prevention of unpredictable chronic stress-related phenomena in zebrafish exposed to

- bromazepam, fluoxetine and nortriptyline. *Psychopharmacology (Berl.)* 233, 3815–3824. <https://doi.org/10.1007/s00213-016-4408-5>
- Marcon, M., Mocelin, R., Benvenuti, R., Costa, T., Herrmann, A.P., de Oliveira, D.L., Koakoski, G., Barcellos, L.J.G., Piato, A., 2018. Environmental enrichment modulates the response to chronic stress in zebrafish. *J. Exp. Biol.* 221, jeb176735. <https://doi.org/10.1242/jeb.176735>
- Mendes, R.C., Henriques, M.B., Barbieri, E., 2021. Carbofuran affects behavior and metabolism of the Atlantic Forest lambari *Deuterodon iguape*, a native species from Brazil. *Environ. Sci. Pollut. Res.* <https://doi.org/10.1007/s11356-021-15071-2>
- Meneghel, S.N., Victora, C.G., Faria, N.M.X., Carvalho, L.A.D., Falk, J.W., 2004. Características epidemiológicas do suicídio no Rio Grande do Sul. *Rev. Saúde Pública* 38, 804–810. <https://doi.org/10.1590/S0034-89102004000600008>
- Meyer, A., Koifman, S., Koifman, R.J., Moreira, J.C., De Rezende Chrisman, J., Abreu-Villaça, Y., 2010. Mood Disorders Hospitalizations, Suicide Attempts, and Suicide Mortality Among Agricultural Workers and Residents in an Area With Intensive Use of Pesticides in Brazil. *J. Toxicol. Environ. Health A* 73, 866–877. <https://doi.org/10.1080/15287391003744781>
- Mishra, S., Zhang, W., Lin, Z., Pang, S., Huang, Y., Bhatt, P., Chen, S., 2020. Carbofuran toxicity and its microbial degradation in contaminated environments. *Chemosphere* 259, 127419. <https://doi.org/10.1016/j.chemosphere.2020.127419>
- Mocelin, R., Marcon, M., da Rosa Araujo, A.S., Herrmann, A.P., Piato, A., 2019a. Withdrawal effects following repeated ethanol exposure are prevented by N-acetylcysteine in zebrafish. *Prog. Neuropsychopharmacol. Biol. Psychiatry* 93, 161–170. <https://doi.org/10.1016/j.pnpbp.2019.03.014>
- Mocelin, R., Marcon, M., D’ambros, S., Mattos, J., Sachett, A., Siebel, A.M., Herrmann, A.P., Piato, A., 2019b. N-Acetylcysteine Reverses Anxiety and Oxidative Damage Induced by Unpredictable Chronic Stress in Zebrafish. *Mol. Neurobiol.* 56, 1188–1195. <https://doi.org/10.1007/s12035-018-1165-y>
- Mondal, M., Kundu, S.K., Islam, M.T., Reiner, Ž., Martorell, M., Sharifi-Rad, J., 2021. Protective effect of *Bridelia tomentosa* due to its phenolic acids and flavonoids against oxidative stress-mediated hepatic toxicity induced by carbofuran. *South Afr. J. Bot.* 141, 447–456. <https://doi.org/10.1016/j.sajb.2021.06.006>
- Neves, P.D.M., Mendonça, M.R., Bellini, M., Pôssas, I.B., 2020. Intoxicação por agrotóxicos agrícolas no estado de Goiás, Brasil, de 2005-2015: análise dos registros nos sistemas oficiais de informação. *Ciênc. Saúde Coletiva* 25, 2743–2754. <https://doi.org/10.1590/1413-81232020257.09562018>
- Nunes, S., 2020. Reliability of behavioral test with fish: How neurotransmitters may exert neuromodulatory effects and alter the biological responses to neuroactive agents. *Sci. Total Environ.* 734, 139372. <https://doi.org/10.1016/j.scitotenv.2020.139372>
- OECD, 2019. Test No. 203: Fish, Acute Toxicity Test. Organisation for Economic Co-operation and Development, Paris.
- Ong-Artborirak, P., Boonchieng, W., Juntarawijit, Y., Juntarawijit, C., 2022. Potential Effects on Mental Health Status Associated with Occupational Exposure to Pesticides among Thai Farmers. *Int. J. Environ. Res. Public Health* 19, 9654. <https://doi.org/10.3390/ijerph19159654>
- Otieno, P.O., Lalah, J.O., Virani, M., Jondiko, I.O., Schramm, K.-W., 2010. Soil and water contamination with carbofuran residues in agricultural farmlands in Kenya following the application of the technical formulation Furadan. *J. Environ. Sci. Health B* 45, 137–144. <https://doi.org/10.1080/03601230903472058>

- Parrón et al., 2011. Association between environmental exposure to pesticides and neurodegenerative diseases. *Toxicol. Appl. Pharmacol.* 256, 379–385. <https://doi.org/10.1016/j.taap.2011.05.006>
- Pires, D.X., Caldas, E.D., Recena, M.C.P., 2005. Uso de agrotóxicos e suicídios no Estado do Mato Grosso do Sul, Brasil. *Cad. Saúde Pública* 21, 598–604. <https://doi.org/10.1590/S0102-311X2005000200027>
- Programa de Análise de Resíduos de Agrotóxicos em Alimentos (PARA) [WWW Document], 2019. Agência Nac. Vigilância Sanitária - Anvisa. URL <https://www.gov.br/anvisa/pt-br/assuntos/agrotoxicos/programa-de-analise-de-residuos-em-alimentos/programa-de-analise-de-residuos-em-alimentos> (accessed 8.16.23).
- PubChem, n.d. Hazardous Substances Data Bank (HSDB): 1530 [WWW Document]. URL <https://pubchem.ncbi.nlm.nih.gov/source/hsdb/1530#section=Ecotoxicity-Values-%28Complete%29> (accessed 7.13.23a).
- PubChem, n.d. Carbofuran [WWW Document]. URL <https://pubchem.ncbi.nlm.nih.gov/compound/2566> (accessed 10.4.21b).
- Ribeiro, D.S., Pereira, T. da S., 2016. O AGROTÓXICO NOSSO DE CADA DIA. *VITTALLE - Rev. Ciênc. Saúde* 28, 14–26.
- Rosman, Y., Makarovskiy, I., Bentur, Y., Shrot, S., Dushnitsky, T., Krivoy, A., 2009. Carbamate poisoning: treatment recommendations in the setting of a mass casualties event. *Am. J. Emerg. Med.* 27, 1117–1124. <https://doi.org/10.1016/j.ajem.2009.01.035>
- Ruomeng, B., Meihao, O., Siru, Z., Shichen, G., Yixian, Z., Junhong, C., Ruijie, M., Yuan, L., Gezhi, X., Xingyu, C., Shiyi, Z., Aihui, Z., Baishan, F., 2023. Degradation strategies of pesticide residue: From chemicals to synthetic biology. *Synth. Syst. Biotechnol.* 8, 302–313. <https://doi.org/10.1016/j.synbio.2023.03.005>
- Sachett, A., Benvenuti, R., Reis, C.G., Gallas-Lopes, M., Bastos, L.M., Aguiar, G.P.S., Herrmann, A.P., Oliveira, J.V., Siebel, A.M., Piato, A., 2022. Micronized Curcumin Causes Hyperlocomotion in Zebrafish Larvae. *Neurochem. Res.* 47, 2307–2316. <https://doi.org/10.1007/s11064-022-03618-9>
- Sachett, A., Gallas-Lopes, M., Conterato, G.M.M., Radharani, Herrmann, A., Piato, A., 2021. Quantification of nonprotein sulfhydryl groups (NPSH) optimized for zebrafish brain tissue.
- Sachett, A., Gallas-Lopes, M., Conterato, G.M.M., Radharani, Herrmann, A., Piato, A., 2020a. Protein quantification protocol optimized for zebrafish brain tissue (Bradford method).
- Sachett, A., Gallas-Lopes, M., Conterato, G.M.M., Radharani, Herrmann, A., Piato, A., 2020b. Quantification of thiobarbituric acid reactive species (TBARS) optimized for zebrafish brain tissue.
- Scerbina, T., Chatterjee, D., Gerlai, R., 2012. Dopamine receptor antagonism disrupts social preference in zebrafish: a strain comparison study. *Amino Acids* 43, 2059–2072. <https://doi.org/10.1007/s00726-012-1284-0>
- Severo et al, 2020. Ecological risk of pesticide contamination in a Brazilian river located near a rural area: A study of biomarkers using zebrafish embryos. *Ecotoxicol. Environ. Saf.* 190, 110071. <https://doi.org/10.1016/j.ecoenv.2019.110071>
- Silva, D.R.O. da, Avila, L.A. de, Agostinetto, D., Dal Magro, T., Oliveira, E. de, Zanella, R., Noldin, J.A., 2009. Monitoramento de agrotóxicos em águas superficiais de regiões orizícolas no sul do Brasil. *Ciênc. Rural* 39, 2383–2389. <https://doi.org/10.1590/S0103-84782009000900001>
- Song, W., Jia, C., Jing, J., Zhao, E., He, M., Chen, L., Yu, P., 2018. Residue behavior and dietary intake risk assessment of carbosulfan and its metabolites in cucumber. *Regul. Toxicol. Pharmacol.* 95, 250–253. <https://doi.org/10.1016/j.yrtph.2018.03.023>

- Tang, B.L., 2020. Neuropathological Mechanisms Associated with Pesticides in Alzheimer's Disease. *Toxics* 8, E21. <https://doi.org/10.3390/toxics8020021>
- Tang, F., Gao, M., Zeng, F., Xu, Z., Tian, G., 2021. An old story with new insights into an ignored issue of metabolites in biochar-amended soil: Effect of biochar on dissipation of carbosulfan as an example. *Sci. Total Environ.* 790, 148100. <https://doi.org/10.1016/j.scitotenv.2021.148100>
- Trevisan, M.J., Baptista, G.C. de, Trevizan, L.R.P., Papa, G., 2004. Residues of carbosulfan and its carbofuran metabolites and 3-hydroxy-carbofuran in oranges. *Rev. Bras. Frutic.* 26, 230–233. <https://doi.org/10.1590/S0100-29452004000200012>
- Tudi, M., Li, Hairong, Li, Hongying, Wang, L., Lyu, J., Yang, L., Tong, S., Yu, Q.J., Ruan, H.D., Atabila, A., Phung, D.T., Sadler, R., Connell, D., 2022. Exposure Routes and Health Risks Associated with Pesticide Application. *Toxics* 10, 335. <https://doi.org/10.3390/toxics10060335>
- United Nations, 2022, n.d. World Population Prospects 2022: Summary of Results | Population Division [WWW Document]. URL <https://www.un.org/development/desa/pd/content/World-Population-Prospects-2022> (accessed 8.16.23).
- Valadas, J., Sachett, A., Marcon, M., Bastos, L.M., Piato, A., 2022. Ochratoxin A induces locomotor impairment and oxidative imbalance in adult zebrafish. *Environ. Sci. Pollut. Res.* 30, 21144–21155. <https://doi.org/10.1007/s11356-022-23692-4>
- Vieira, D.C., Noldin, J.A., Deschamps, F.C., Resgalla, C., 2016. Ecological risk analysis of pesticides used on irrigated rice crops in southern Brazil. *Chemosphere* 162, 48–54. <https://doi.org/10.1016/j.chemosphere.2016.07.046>
- Vryzas, Z., 2018. Pesticide fate in soil-sediment-water environment in relation to contamination preventing actions. *Curr. Opin. Environ. Sci. Health* 4, 5–9. <https://doi.org/10.1016/j.coesh.2018.03.001>
- Wang, Y., Weng, Y., Lv, L., Wang, D., Yang, G., Jin, Y., Wang, Q., 2022. Transgenerational effects of co-exposure to cadmium and carbofuran on zebrafish based on biochemical and transcriptomic analyses. *J. Hazard. Mater.* 439, 129644. <https://doi.org/10.1016/j.jhazmat.2022.129644>
- Wen, X., Ma, C., Sun, M., Wang, Y., Xue, X., Chen, J., Song, W., Li-Byarlay, H., Luo, S., 2021. Pesticide residues in the pollen and nectar of oilseed rape (*Brassica napus* L.) and their potential risks to honey bees. *Sci. Total Environ.* 786, 147443. <https://doi.org/10.1016/j.scitotenv.2021.147443>
- World Health Organization, Safety, I.P. on C., 2010. The WHO recommended classification of pesticides by hazard and guidelines to classification 2009. World Health Organization.
- Wu, H., Li, K., Wang, Y., Huang, R., Jin, X., Li, X., Wang, H., Li, B., 2023. Suicide and suicidality in people exposed to pesticides: A systematic review and meta-analysis. *Environ. Pollut.* 327, 121542. <https://doi.org/10.1016/j.envpol.2023.121542>
- Xiong, R.-G., Li, J., Cheng, J., Wu, S.-X., Huang, S.-Y., Zhou, D.-D., Saimaiti, A., Shang, A., Tang, G.-Y., Li, H.-B., Gan, R.-Y., Feng, Y., 2023. New insights into the protection of dietary components on anxiety, depression, and other mental disorders caused by contaminants and food additives. *Trends Food Sci. Technol.* 138, 44–56. <https://doi.org/10.1016/j.tifs.2023.06.004>
- Yoshida, M., 2022. Incorporating ventilatory activity into a novel tank test for evaluating drug effects on zebrafish. *Physiol. Behav.* 257, 113978. <https://doi.org/10.1016/j.physbeh.2022.113978>
- Zago, A.M., Faria, N.M.X., Fávero, J.L., Meucci, R.D., Woskie, S., Fassa, A.G., 2020. Pesticide exposure and risk of cardiovascular disease: A systematic review. *Glob. Public Health* 0, 1–23. <https://doi.org/10.1080/17441692.2020.1808693>

- Zanchi, M.M., Marins, K., Zamoner, A., 2023. Could pesticide exposure be implicated in the high incidence rates of depression, anxiety and suicide in farmers? A systematic review. *Environ. Pollut.* 331, 121888. <https://doi.org/10.1016/j.envpol.2023.121888>
- Zhang, C.P., He, H.M., Yu, J.Z., Hu, X.Q., Zhu, Y.H., Wang, Q., 2016. Residues of carbosulfan and its metabolites carbofuran and 3-hydroxy carbofuran in rice field ecosystem in China. *J. Environ. Sci. Health B* 51, 351–357. <https://doi.org/10.1080/03601234.2015.1120606>

7. ANEXOS

7.1 CARTA DE APROVAÇÃO DA CEUA - UFRGS



U F R G S
UNIVERSIDADE FEDERAL
DO RIO GRANDE DO SUL

PRÓ-REITORIA DE PESQUISA

Comissão De Ética No Uso De Animais

CEUA
UFRGS

CARTA DE APROVAÇÃO

Comissão De Ética No Uso De Animais analisou o projeto:

Número: 42114

Título: Avaliação de alterações comportamentais e neuroquímicas induzidas pelo carbofurano em peixes-zebra (Danio rerio)

Vigência: 15/03/2022 à 08/09/2023

Pesquisadores:

Equipe UFRGS:

ÂNGELO LUIS STAPASSOLI PIATO - coordenador desde 15/03/2022
GIOVANA ROLIM DE OLIVEIRA - desde 15/03/2022
Carlos Guilherme Rosa Reis - desde 15/03/2022
Rafael Chitolina - desde 15/03/2022
ROSANE GOMEZ - pesquisador desde 15/03/2022
Ana Paula Herrmann - pesquisador desde 15/03/2022

Comissão De Ética No Uso De Animais aprovou o mesmo em seus aspectos éticos e metodológicos, para a utilização de 576 peixes-zebra adultos, que serão provenientes do Departamento de Bioquímica da UFRGS, de acordo com os preceitos das Diretrizes e Normas Nacionais e Internacionais, especialmente a Lei 11.794 de 08 de novembro de 2008, o Decreto 6899 de 15 de julho de 2009, e as normas editadas pelo Conselho Nacional de Controle da Experimentação Animal (CONCEA), que disciplinam a produção, manutenção e/ou utilização de animais do filo Chordata, subfilo Vertebrata (exceto o homem) em atividade de ensino ou pesquisa.

Porto Alegre, Segunda-Feira, 16 de Maio de 2022

MAITE DE MORAES VIEIRA
Coordenador da comissão de ética

7.2 RIGHTSLINK PRINTABLE LICENCE – FIGURA 1

16/08/2023, 22:48

RightsLink Printable License

ELSEVIER LICENSE TERMS AND CONDITIONS

Aug 16, 2023

This Agreement between UFRGS -- Giovana Oliveira ("You") and Elsevier ("Elsevier") consists of your license details and the terms and conditions provided by Elsevier and Copyright Clearance Center.

License Number	5611090061886
License date	Aug 16, 2023
Licensed Content Publisher	Elsevier
Licensed Content Publication	Chemosphere
Licensed Content Title	Carbofuran toxicity and its microbial degradation in contaminated environments
Licensed Content Author	Sandhya Mishra, Wenping Zhang, Ziqiu Lin, Shimei Pang, Yaohua Huang, Pankaj Bhatt, Shaohua Chen
Licensed Content Date	Nov 1, 2020
Licensed Content Volume	259
Licensed Content Issue	n/a
Licensed Content Pages	1
Start Page	127419
End Page	0
Type of Use	reuse in a thesis/dissertation
Portion	figures/tables/illustrations

<https://s100.copyright.com/AppDispatchServlet>

1/7

Number of figures/tables/illustrations	1
Format	both print and electronic
Are you the author of this Elsevier article?	No
Will you be translating?	No
Title	EVALUATION OF BEHAVIORAL AND NEUROCHEMICAL CHANGES INDUCED BY CARBOFURAN IN ZEBRAFISH (<i>Danio rerio</i>)
Institution name	UFRGS
Expected presentation date	Sep 2023
Portions	Figure 1 UFRGS Mucio teixeira 134
Requestor Location	Porto Alegre, RS 90050-360 Brazil Attn: UFRGS
Publisher Tax ID	GB 494 6272 12
Total	0.00 USD
Terms and Conditions	

INTRODUCTION

1. The publisher for this copyrighted material is Elsevier. By clicking "accept" in connection with completing this licensing transaction, you agree that the following terms and conditions apply to this transaction (along with the Billing and Payment terms and conditions established by Copyright Clearance Center, Inc. ("CCC"), at the time that you opened your RightsLink account and that are available at any time at <https://myaccount.copyright.com>).

GENERAL TERMS

2. Elsevier hereby grants you permission to reproduce the aforementioned material subject to the terms and conditions indicated.
3. Acknowledgement: If any part of the material to be used (for example, figures) has appeared in our publication with credit or acknowledgement to another source, permission must also be sought from that source. If such permission is not obtained then that material may not be included in your publication/copies. Suitable acknowledgement to the source must be made, either as a footnote or in a reference list at the end of your publication, as follows:

"Reprinted from Publication title, Vol /edition number, Author(s), Title of article / title of chapter, Pages No., Copyright (Year), with permission from Elsevier [OR APPLICABLE SOCIETY COPYRIGHT OWNER]." Also Lancet special credit - "Reprinted from The Lancet, Vol. number, Author(s), Title of article, Pages No., Copyright (Year), with permission from Elsevier."
4. Reproduction of this material is confined to the purpose and/or media for which permission is hereby given. The material may not be reproduced or used in any other way, including use in combination with an artificial intelligence tool (including to train an algorithm, test, process, analyse, generate output and/or develop any form of artificial intelligence tool), or to create any derivative work and/or service (including resulting from the use of artificial intelligence tools).
5. Altering/Modifying Material: Not Permitted. However figures and illustrations may be altered/adapted minimally to serve your work. Any other abbreviations, additions, deletions and/or any other alterations shall be made only with prior written authorization of Elsevier Ltd. (Please contact Elsevier's permissions helpdesk [here](#)). No modifications can be made to any Lancet figures/tables and they must be reproduced in full.
6. If the permission fee for the requested use of our material is waived in this instance, please be advised that your future requests for Elsevier materials may attract a fee.
7. Reservation of Rights: Publisher reserves all rights not specifically granted in the combination of (i) the license details provided by you and accepted in the course of this licensing transaction, (ii) these terms and conditions and (iii) CCC's Billing and Payment terms and conditions.
8. License Contingent Upon Payment: While you may exercise the rights licensed immediately upon issuance of the license at the end of the licensing process for the transaction, provided that you have disclosed complete and accurate details of your proposed use, no license is finally effective unless and until full payment is received from you (either by publisher or by CCC) as provided in CCC's Billing and Payment terms and conditions. If full payment is not received on a timely basis, then any license preliminarily granted shall be deemed automatically revoked and shall be void as if never granted. Further, in the event that you breach any of these terms and conditions or any of CCC's Billing and Payment terms and conditions, the license is automatically revoked and shall be void as if never granted. Use of materials as described in a revoked license, as well as any use of the materials beyond the scope of an unrevoked license, may constitute copyright infringement and publisher reserves the right to take any and all action to protect its copyright in the materials.
9. Warranties: Publisher makes no representations or warranties with respect to the licensed material.
10. Indemnity: You hereby indemnify and agree to hold harmless publisher and CCC, and their respective officers, directors, employees and agents, from and against any and all claims arising out of your use of the licensed material other than as specifically authorized pursuant to this license.

11. **No Transfer of License:** This license is personal to you and may not be sublicensed, assigned, or transferred by you to any other person without publisher's written permission.

12. **No Amendment Except in Writing:** This license may not be amended except in a writing signed by both parties (or, in the case of publisher, by CCC on publisher's behalf).

13. **Objection to Contrary Terms:** Publisher hereby objects to any terms contained in any purchase order, acknowledgment, check endorsement or other writing prepared by you, which terms are inconsistent with these terms and conditions or CCC's Billing and Payment terms and conditions. These terms and conditions, together with CCC's Billing and Payment terms and conditions (which are incorporated herein), comprise the entire agreement between you and publisher (and CCC) concerning this licensing transaction. In the event of any conflict between your obligations established by these terms and conditions and those established by CCC's Billing and Payment terms and conditions, these terms and conditions shall control.

14. **Revocation:** Elsevier or Copyright Clearance Center may deny the permissions described in this License at their sole discretion, for any reason or no reason, with a full refund payable to you. Notice of such denial will be made using the contact information provided by you. Failure to receive such notice will not alter or invalidate the denial. In no event will Elsevier or Copyright Clearance Center be responsible or liable for any costs, expenses or damage incurred by you as a result of a denial of your permission request, other than a refund of the amount(s) paid by you to Elsevier and/or Copyright Clearance Center for denied permissions.

LIMITED LICENSE

The following terms and conditions apply only to specific license types:

15. **Translation:** This permission is granted for non-exclusive world **English** rights only unless your license was granted for translation rights. If you licensed translation rights you may only translate this content into the languages you requested. A professional translator must perform all translations and reproduce the content word for word preserving the integrity of the article.

16. **Posting licensed content on any Website:** The following terms and conditions apply as follows: Licensing material from an Elsevier journal: All content posted to the web site must maintain the copyright information line on the bottom of each image; A hyper-text must be included to the Homepage of the journal from which you are licensing at <http://www.sciencedirect.com/science/journal/xxxxx> or the Elsevier homepage for books at <http://www.elsevier.com>; Central Storage: This license does not include permission for a scanned version of the material to be stored in a central repository such as that provided by Heron/XanEdu.

Licensing material from an Elsevier book: A hyper-text link must be included to the Elsevier homepage at <http://www.elsevier.com>. All content posted to the web site must maintain the copyright information line on the bottom of each image.

Posting licensed content on Electronic reserve: In addition to the above the following clauses are applicable: The web site must be password-protected and made available only to bona fide students registered on a relevant course. This permission is granted for 1 year only. You may obtain a new license for future website posting.

17. **For journal authors:** the following clauses are applicable in addition to the above:

Preprints:

A preprint is an author's own write-up of research results and analysis, it has not been peer-reviewed, nor has it had any other value added to it by a publisher (such as formatting, copyright, technical enhancement etc.).

Authors can share their preprints anywhere at any time. Preprints should not be added to or enhanced in any way in order to appear more like, or to substitute for, the final versions of articles however authors can update their preprints on arXiv or RePEc with their Accepted Author Manuscript (see below).

If accepted for publication, we encourage authors to link from the preprint to their formal publication via its DOI. Millions of researchers have access to the formal publications on ScienceDirect, and so links will help users to find, access, cite and use the best available version. Please note that Cell Press, The Lancet and some society-owned have different preprint policies. Information on these policies is available on the journal homepage.

Accepted Author Manuscripts: An accepted author manuscript is the manuscript of an article that has been accepted for publication and which typically includes author-incorporated changes suggested during submission, peer review and editor-author communications.

Authors can share their accepted author manuscript:

- immediately
 - via their non-commercial person homepage or blog
 - by updating a preprint in arXiv or RePEc with the accepted manuscript
 - via their research institute or institutional repository for internal institutional uses or as part of an invitation-only research collaboration work-group
 - directly by providing copies to their students or to research collaborators for their personal use
 - for private scholarly sharing as part of an invitation-only work group on commercial sites with which Elsevier has an agreement
- After the embargo period
 - via non-commercial hosting platforms such as their institutional repository
 - via commercial sites with which Elsevier has an agreement

In all cases accepted manuscripts should:

- link to the formal publication via its DOI
- bear a CC-BY-NC-ND license - this is easy to do
- if aggregated with other manuscripts, for example in a repository or other site, be shared in alignment with our hosting policy not be added to or enhanced in any way to appear more like, or to substitute for, the published journal article.

Published journal article (JPA): A published journal article (PJA) is the definitive final record of published research that appears or will appear in the journal and embodies all value-adding publishing activities including peer review co-ordination, copy-editing, formatting, (if relevant) pagination and online enrichment.

Policies for sharing publishing journal articles differ for subscription and gold open access articles:

Subscription Articles: If you are an author, please share a link to your article rather than the full-text. Millions of researchers have access to the formal publications on ScienceDirect, and so links will help your users to find, access, cite, and use the best available version.

Theses and dissertations which contain embedded PJAs as part of the formal submission can be posted publicly by the awarding institution with DOI links back to the formal publications on ScienceDirect.

If you are affiliated with a library that subscribes to ScienceDirect you have additional private sharing rights for others' research accessed under that agreement. This includes use for classroom teaching and internal training at the institution (including use in course packs and courseware programs), and inclusion of the article for grant funding purposes.

Gold Open Access Articles: May be shared according to the author-selected end-user license and should contain a [CrossMark logo](#), the end user license, and a DOI link to the formal publication on ScienceDirect.

Please refer to Elsevier's [posting policy](#) for further information.

18. **For book authors** the following clauses are applicable in addition to the above: Authors are permitted to place a brief summary of their work online only. You are not allowed to download and post the published electronic version of your chapter, nor may you scan the printed edition to create an electronic version. **Posting to a repository:** Authors are permitted to post a summary of their chapter only in their institution's repository.

19. **Thesis/Dissertation:** If your license is for use in a thesis/dissertation your thesis may be submitted to your institution in either print or electronic form. Should your thesis be published commercially, please reapply for permission. These requirements include permission for the Library and Archives of Canada to supply single copies, on demand, of the complete thesis and include permission for Proquest/UMI to supply single copies, on demand, of the complete thesis. Should your thesis be published commercially, please reapply for permission. Theses and dissertations which contain embedded PJAs as part of the formal submission can be posted publicly by the awarding institution with DOI links back to the formal publications on ScienceDirect.

Elsevier Open Access Terms and Conditions

You can publish open access with Elsevier in hundreds of open access journals or in nearly 2000 established subscription journals that support open access publishing. Permitted third party re-use of these open access articles is defined by the author's choice of Creative Commons user license. See our [open access license policy](#) for more information.

Terms & Conditions applicable to all Open Access articles published with Elsevier:

Any reuse of the article must not represent the author as endorsing the adaptation of the article nor should the article be modified in such a way as to damage the author's honour or reputation. If any changes have been made, such changes must be clearly indicated.

The author(s) must be appropriately credited and we ask that you include the end user license and a DOI link to the formal publication on ScienceDirect.

If any part of the material to be used (for example, figures) has appeared in our publication with credit or acknowledgement to another source it is the responsibility of the user to ensure their reuse complies with the terms and conditions determined by the rights holder.

Additional Terms & Conditions applicable to each Creative Commons user license:

CC BY: The CC-BY license allows users to copy, to create extracts, abstracts and new works from the Article, to alter and revise the Article and to make commercial use of the Article (including reuse and/or resale of the Article by commercial entities), provided the user gives appropriate credit (with a link to the formal publication through the relevant DOI), provides a link to the license, indicates if changes were made and the licensor is not represented as endorsing the use made of the work. The full details of the license are available at <http://creativecommons.org/licenses/by/4.0>.

CC BY NC SA: The CC BY-NC-SA license allows users to copy, to create extracts, abstracts and new works from the Article, to alter and revise the Article, provided this is not done for commercial purposes, and that the user gives appropriate credit (with a link to the formal publication through the relevant DOI), provides a link to the license, indicates if changes were made and the licensor is not represented as endorsing the use made of the work. Further, any new works must be made available on the same conditions. The full details of the license are available at <http://creativecommons.org/licenses/by-nc-sa/4.0>.

CC BY NC ND: The CC BY-NC-ND license allows users to copy and distribute the Article, provided this is not done for commercial purposes and further does not permit distribution of the Article if it is changed or edited in any way, and provided the user gives appropriate credit (with a link to the formal publication through the relevant DOI), provides a link to the license, and that the licensor is not represented as endorsing the use made of the work. The full details of the license are available at <http://creativecommons.org/licenses/by-nc-nd/4.0>. Any commercial reuse of Open Access articles published with a CC BY NC SA or CC BY NC ND license requires permission from Elsevier and will be subject to a fee.

Commercial reuse includes:

- Associating advertising with the full text of the Article
- Charging fees for document delivery or access
- Article aggregation
- Systematic distribution via e-mail lists or share buttons

Posting or linking by commercial companies for use by customers of those companies.

20. Other Conditions:

v1.10

Questions? customercare@copyright.com.
