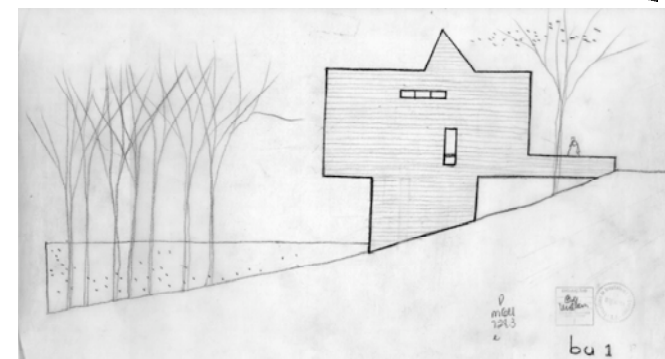
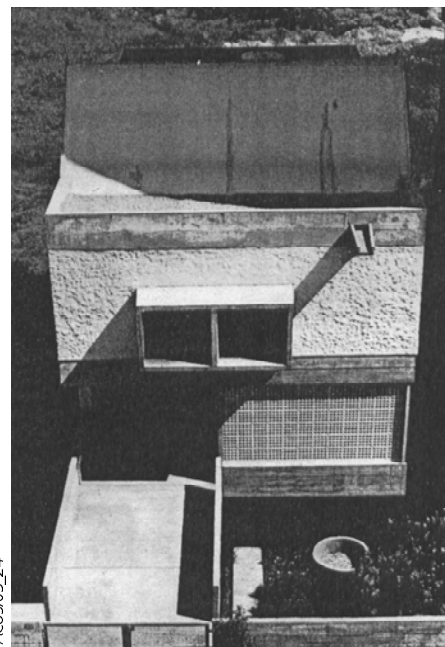
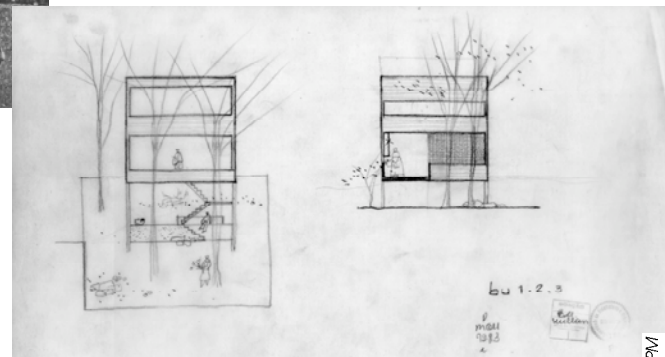
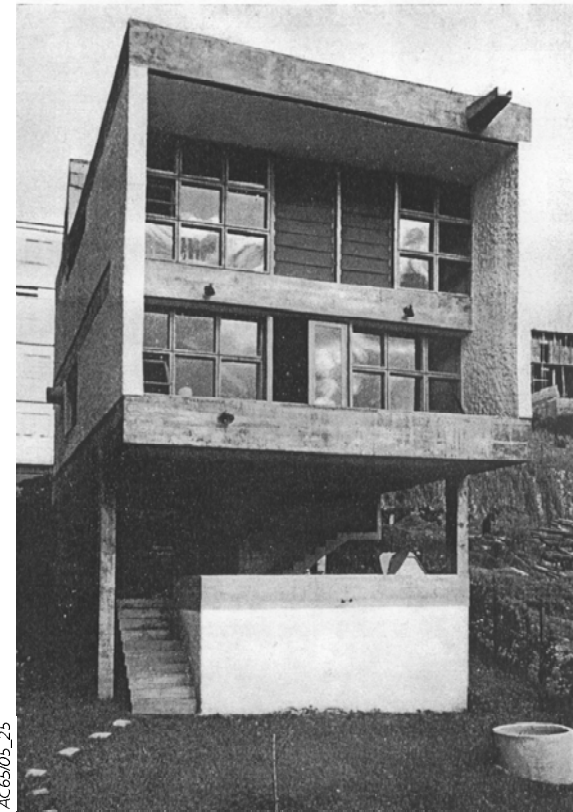
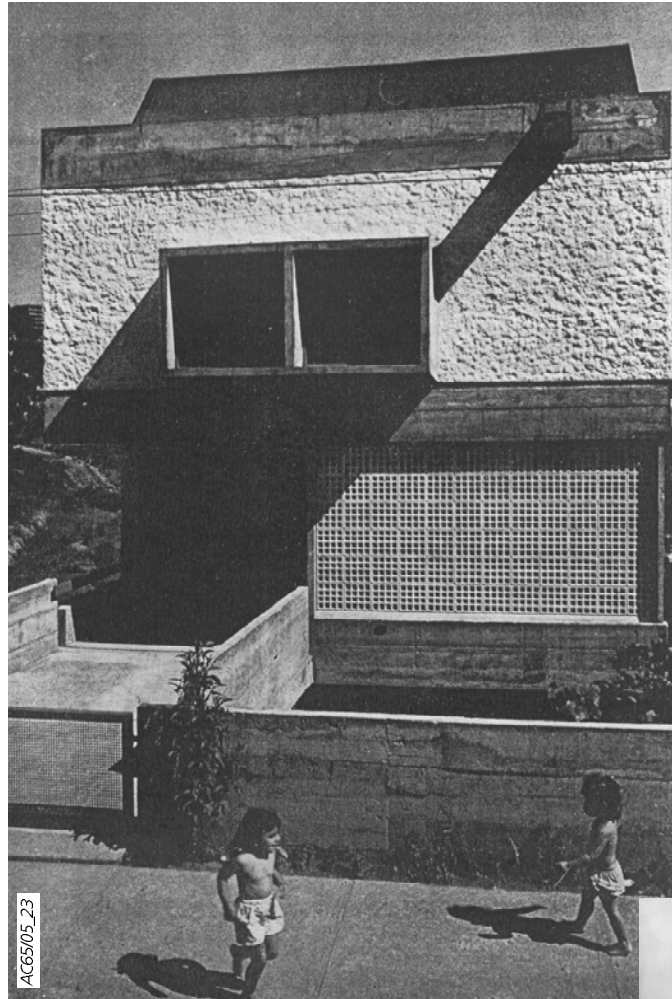
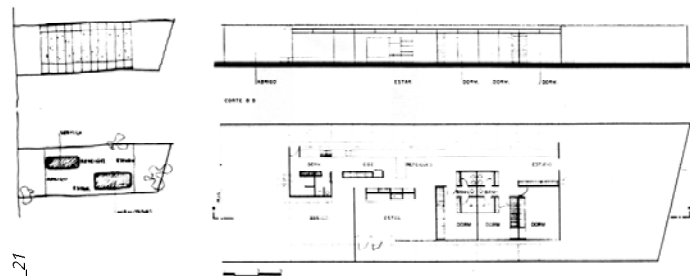


7.4.11 RESIDÊNCIAS: A MORADIA COMO LABORATÓRIO EXPERIMENTAL

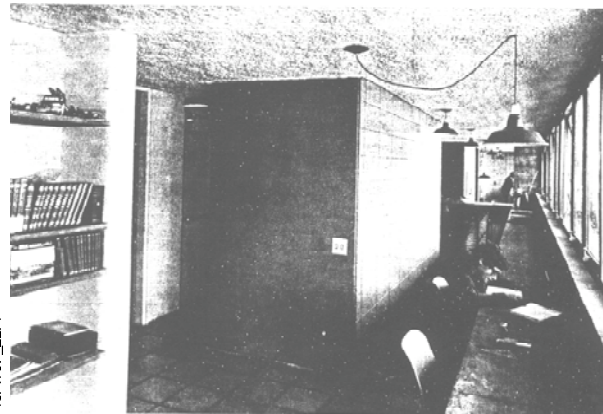
CASA ANTONIO DELBOUX, 1962, CARLOS MILLAN



CASA JULIO MENOCELLO, 1969, RUY OHTAKE

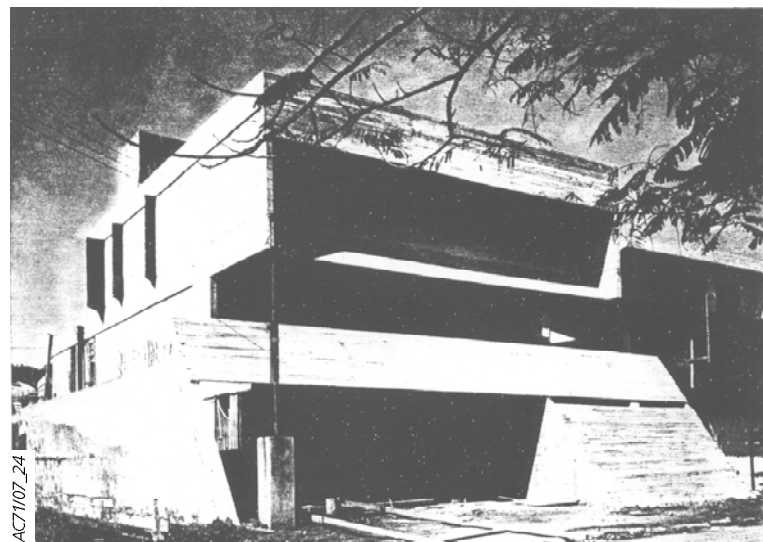


ACT1107_21

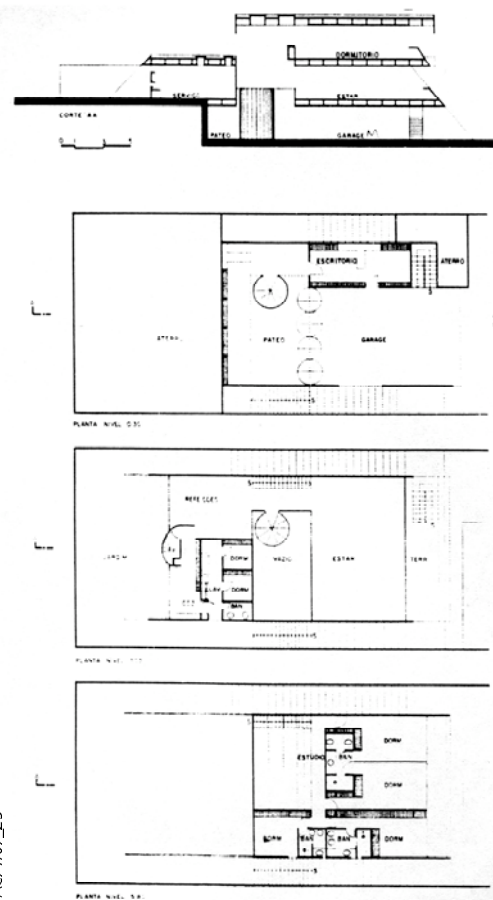


ACT1107_22A

CASA CARLOS SIQUEIRA NETO, 1969, RUY OHTAKE

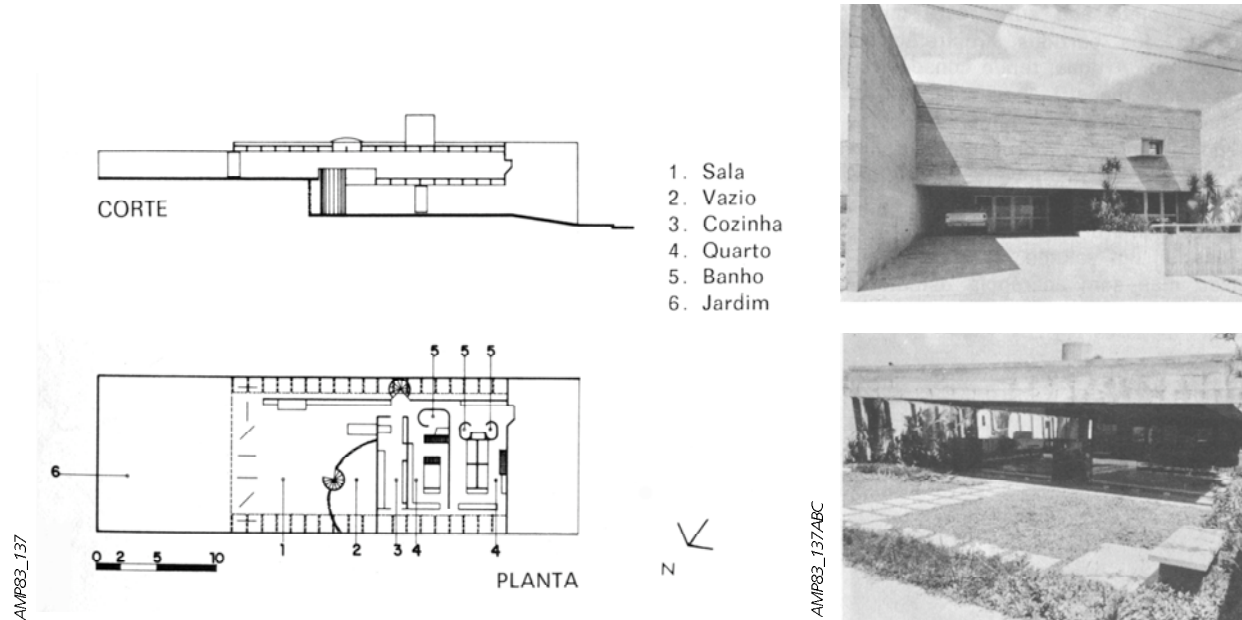


ACT1107_24



ACT1107_25

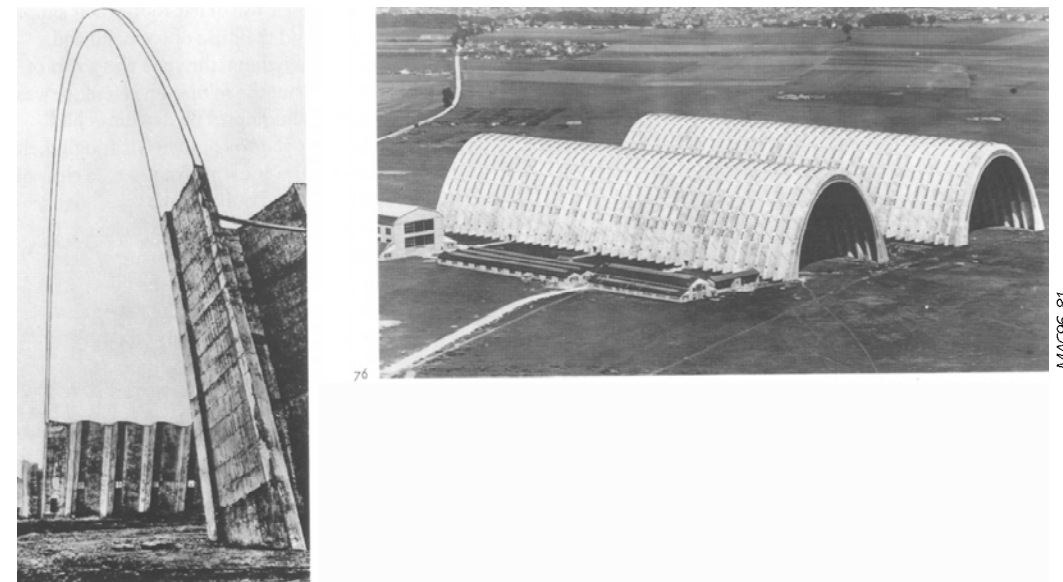
CASA JOSÉ ANTONIO FILIPELLI, 1971, RUY OHTAKE



AMF83_137

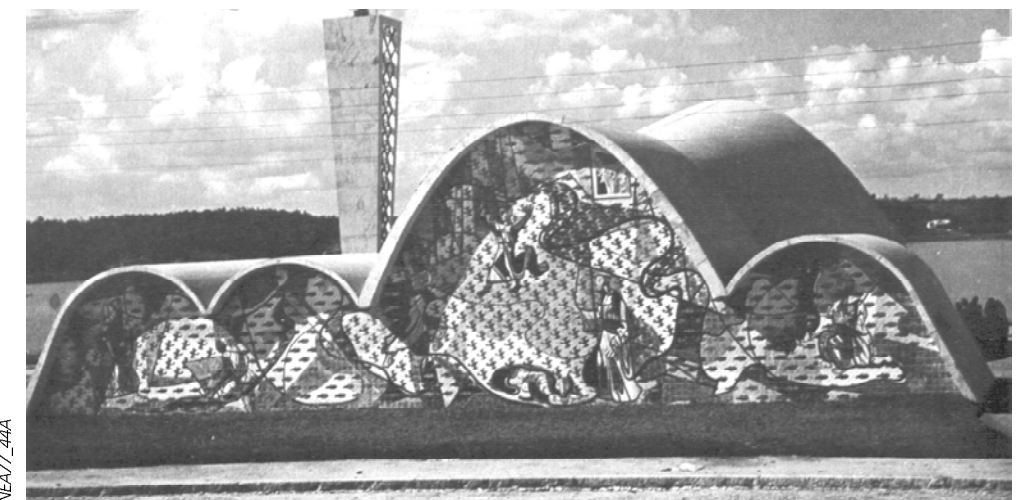
AMF83_137/ABC

HANGARES, ORLY, PARIS, 1921, EUGENE FREYSSINET



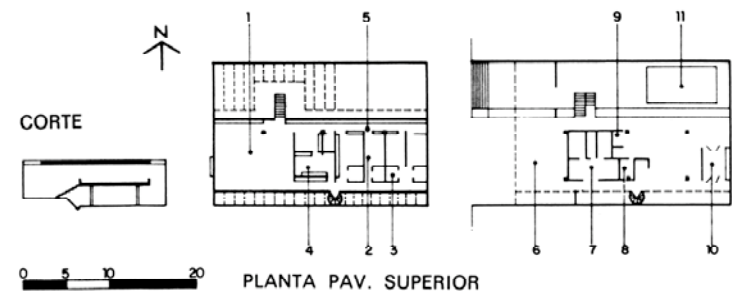
MAC96_87

IGREJA DA PAMPULHA, BELO HORIZONTE, 1944, OSCAR NIEMEYER

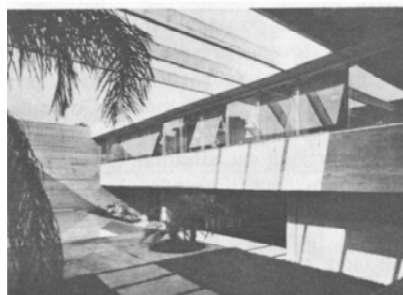


NEA77_44A

CASA BITTENCOURT FILHO, 1972, RUY OHTAKE

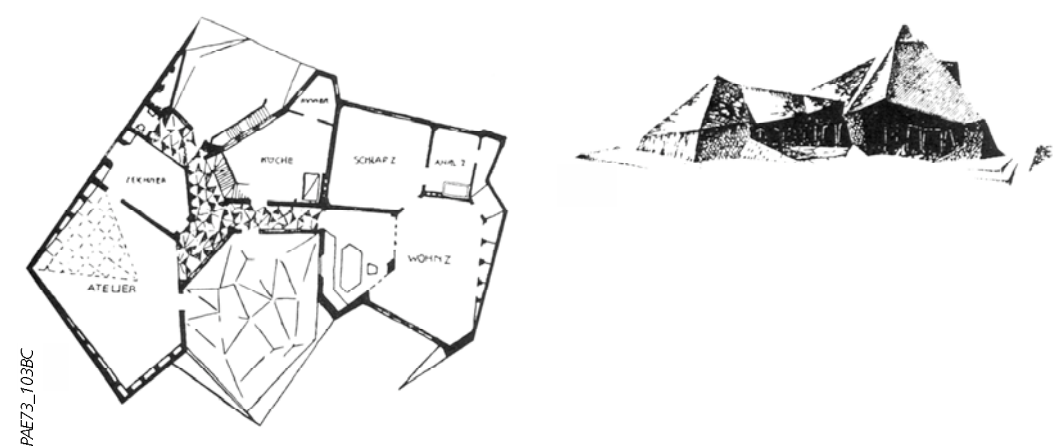


AMF83_158



AMF83_158/ABC

CASA DO ARQUITETO, 1920, WASSILI LUCKHARDT

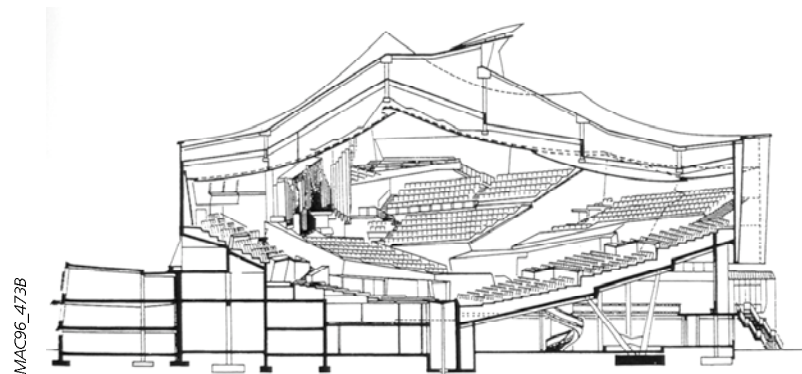


PAE73_103BC

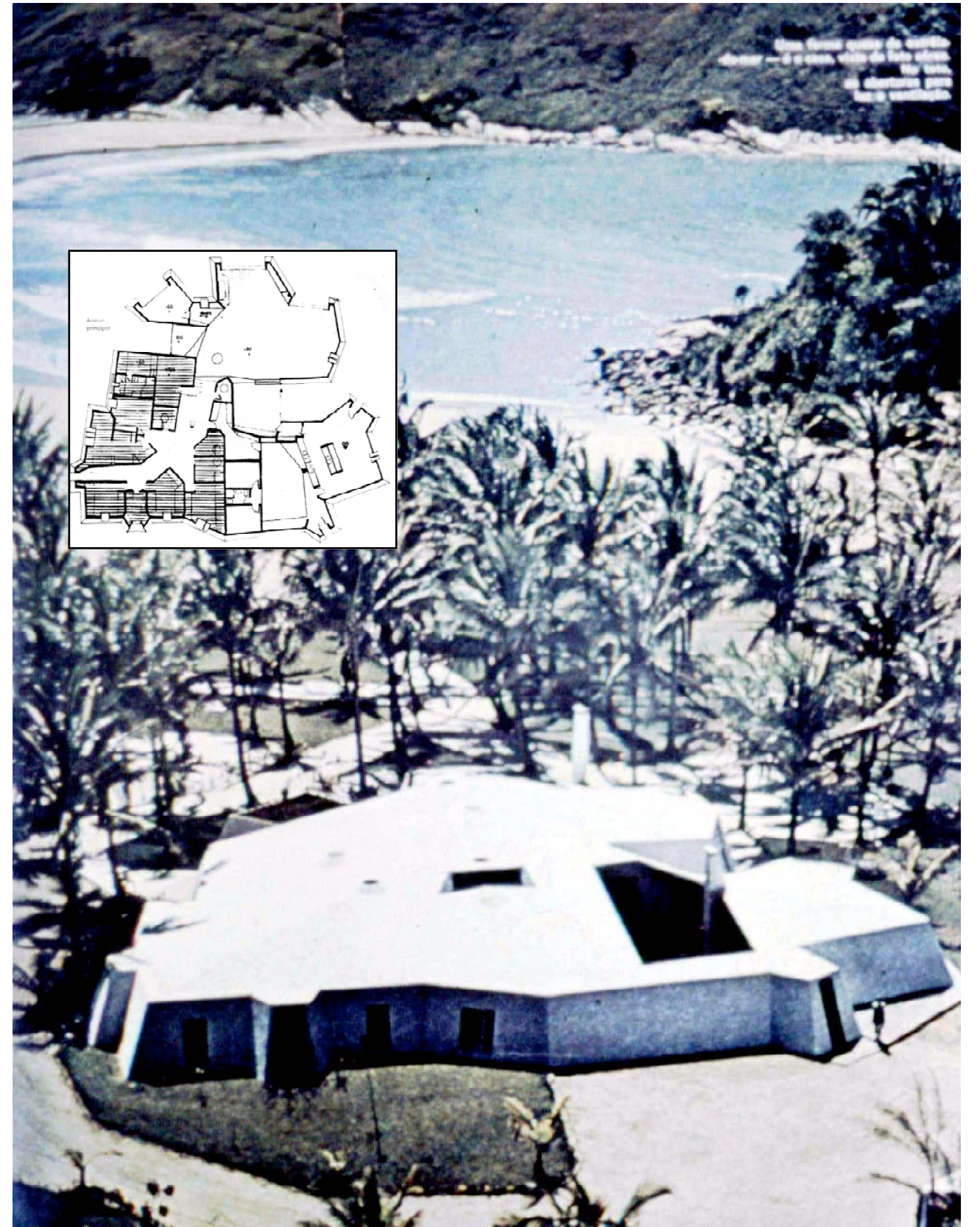
SEGUNDO GOETHEANUM, DORNACH, SUIÇA, 1924-8, RUDOLF STEINER



FILARMONICA DE BERLIM, 1956-63, HANS SCHAROUM



CASA DE PRAIA DO MAR CASADO, 1964, EDUARDO LONGO



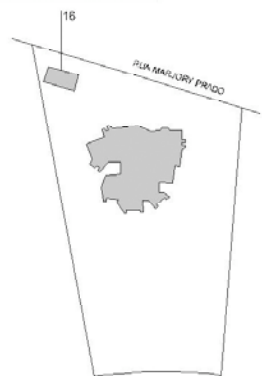
PRANCHA 1 - CASA DO MAR CASADO, 1964.

- LEGENDA:
- 1 - HALL ACESSO PRINCIPAL
 - 2 - ACESSO AOS DORMITÓRIOS
 - 3 - ACESSO SERVIÇO
 - 4 - SALA DE ESTAR
 - 5 - SALA DE JANTAR
 - 6 - DORMITÓRIO
 - 7 - BANHEIRO
 - 8 - ESCRITÓRIO
 - 9 - LAVADO
 - 10 - DORM EMPREGADOS
 - 11 - COZINHA
 - 12 - ÁREA SERVIÇO
 - 13 - ROUPARIA
 - 14 - TERRAÇO
 - 15 - BAR
 - 16 - EDICULA

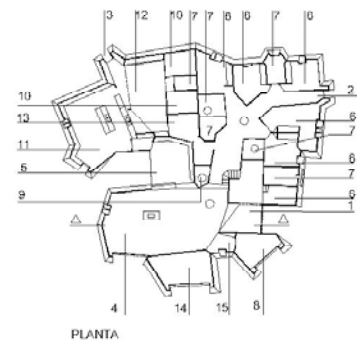
ESCALA GRÁFICA



EDITE GALOTE



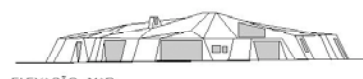
Implantação 1:200



PLANTA



CORTE



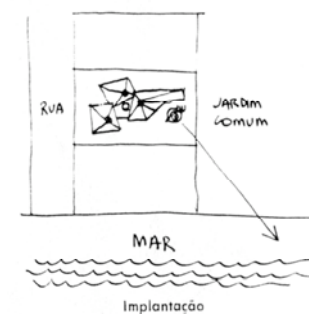
ELEVAÇÃO MAR



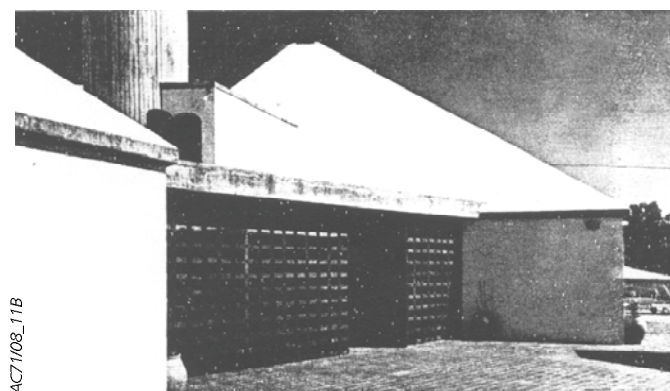
ACT1/08_24A



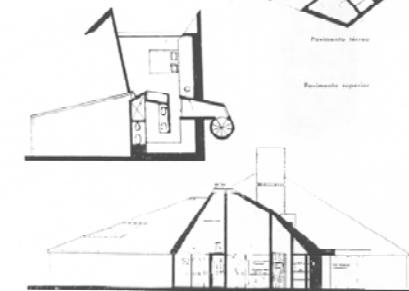
CASA CAL, GUARUJÁ, 1968, EDUARDO LONGO



ACT1/08_10B



ACT1/08_11B



corte A



corte B

ACT1/08_12

CASA MANOEL PIRES DA COSTA, 1970, EDUARDO LONGO

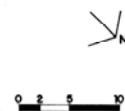


AMP77_131ABC

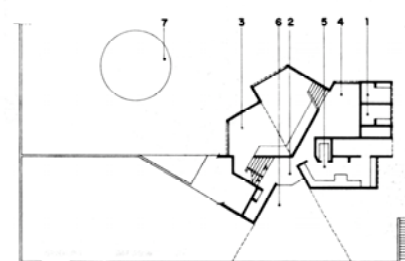
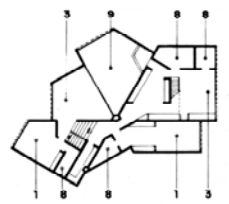


- 1. Quarto
- 2. Hall de entrada
- 3. Sala
- 4. Jantar
- 5. Cozinha
- 6. Abrigo de carro
- 7. Piscina
- 8. Banheiro
- 9. Vazio

PLANTA



0 2 5 10



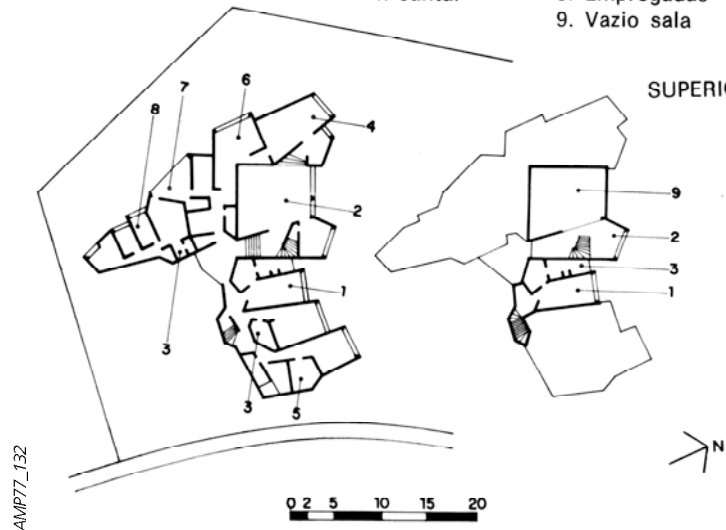
AMP77_131

CASA AFFONSO HENNEL, 1970, EDUARDO LONGO

- 1. Quarto
- 2. Sala
- 3. Banheiro
- 4. Jantar
- 5. Closet
- 6. Cozinha
- 7. Serviço
- 8. Empregadas
- 9. Vazio sala

TÉRREO

SUPERIOR

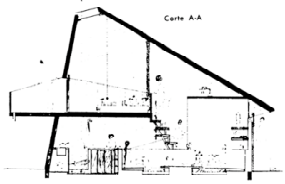
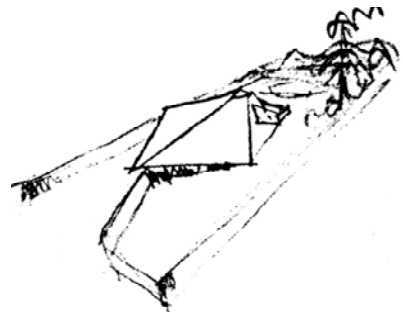
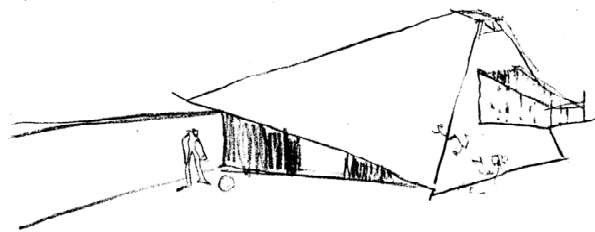


AMP77_132

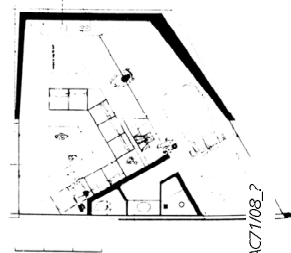
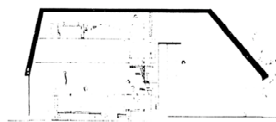
AMP77_132ABC



CASAS DE PRAIA EL, GUARUJÁ, 1969, EDUARDO LONGO

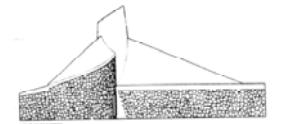
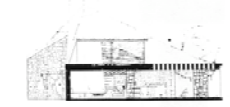
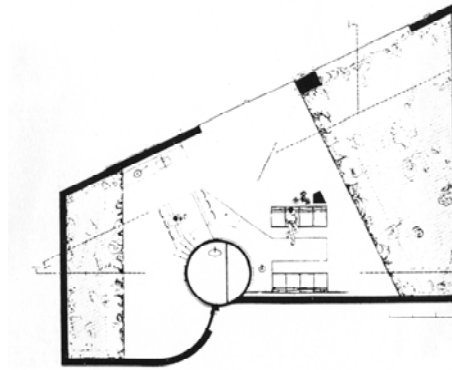


Corte B-B



ACT1108_2

CASA MG, GUARUJÁ, 1967, EDUARDO LONGO



Elevação no rio das Flamboyant

Elevação jardim



Elevação em Marjary Prado

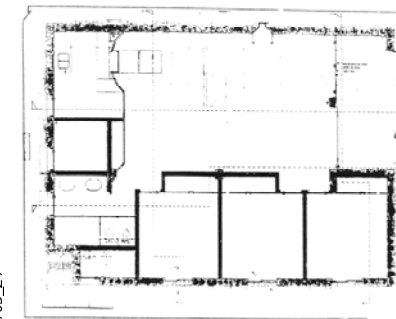


Elevação praia

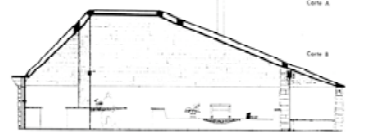
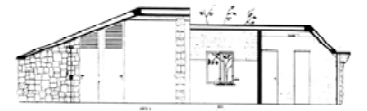


ACT1109_27PL

CASAS RM, GUARUJÁ, 1965, EDUARDO LONGO



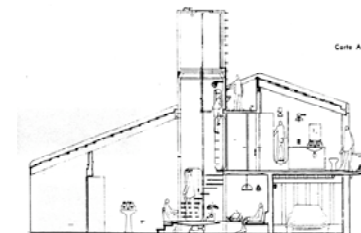
ACT1109_21



Corte A

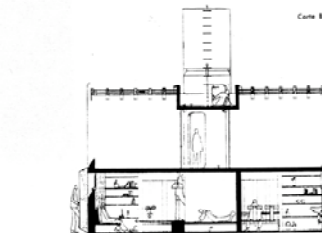


Corte B



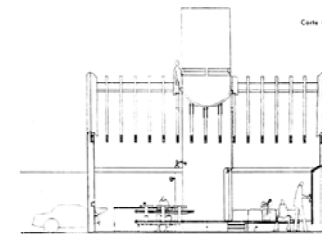
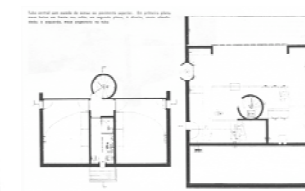
Corte A-A

ACT1109_19



Corte B-B

ACT1109_20



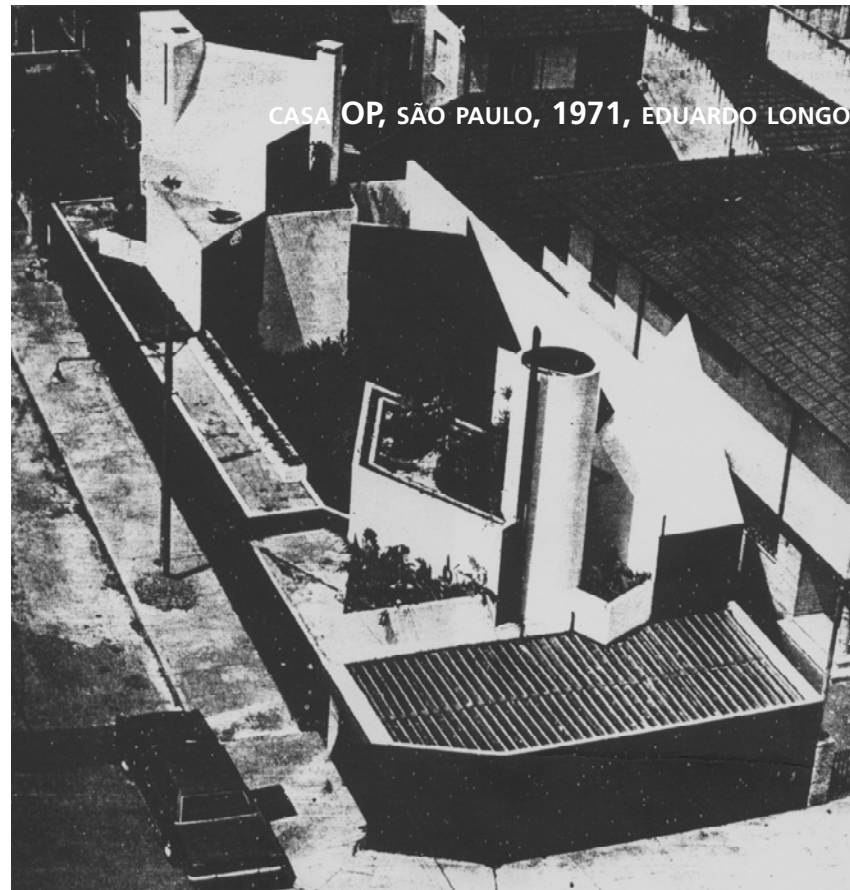
Corte C-C

ACT1109_21

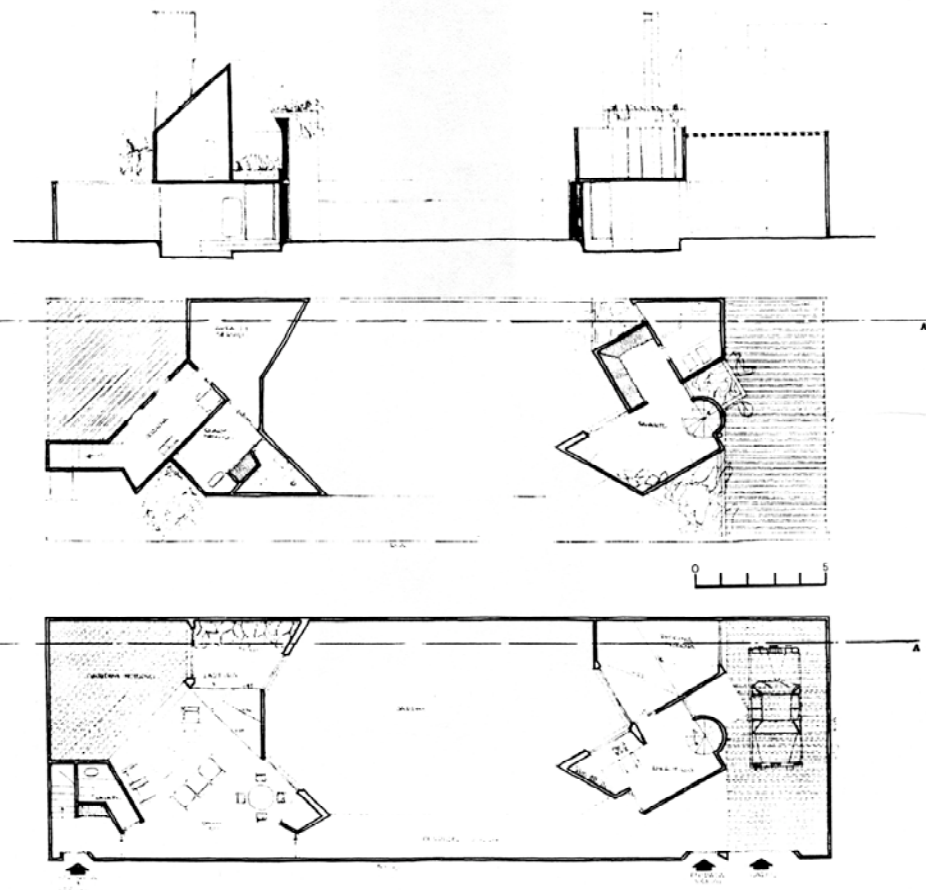
CASA EPL, GUARUJÁ, 1965, EDUARDO LONGO



ACT1109_18A



AC7108_26



AC7108_28

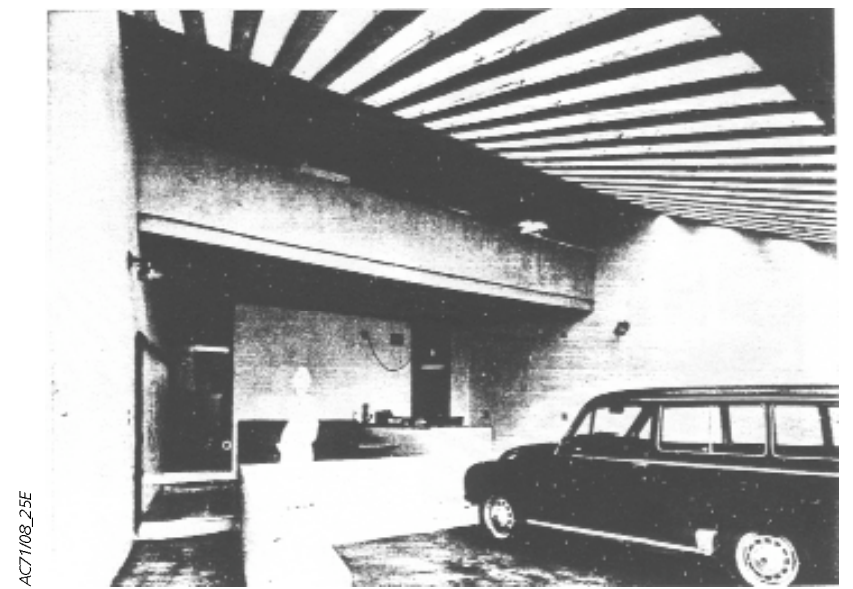
CASA E ESCRITÓRIO DO ARQUITETO, 1971, EDUARDO LONGO



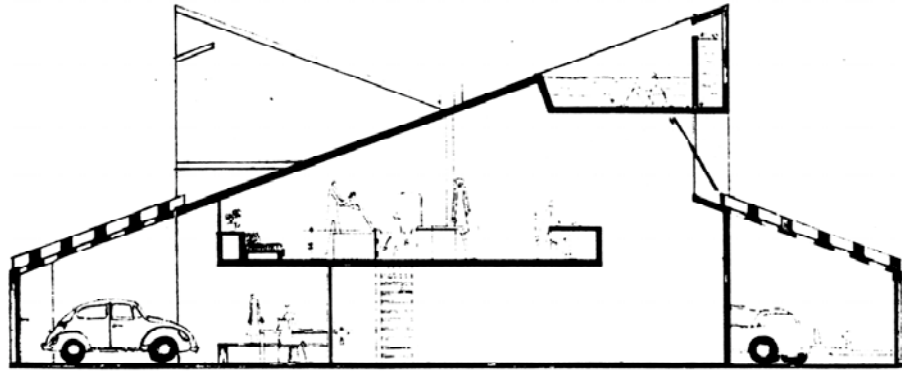
AC7108_BC



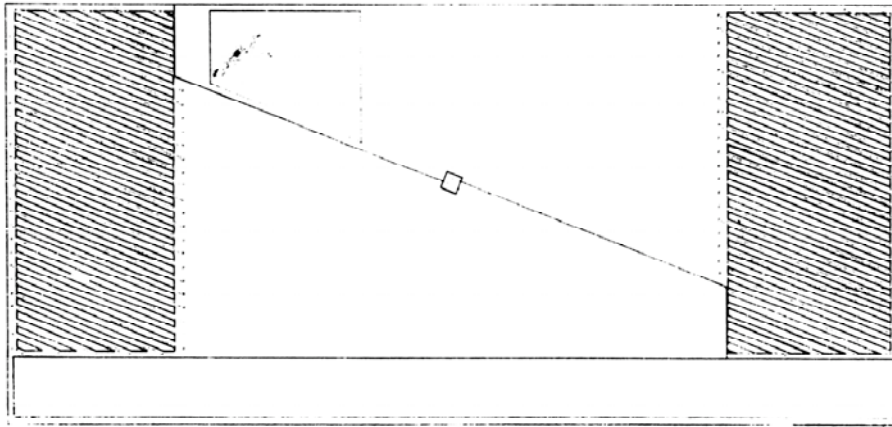
AC7108_22



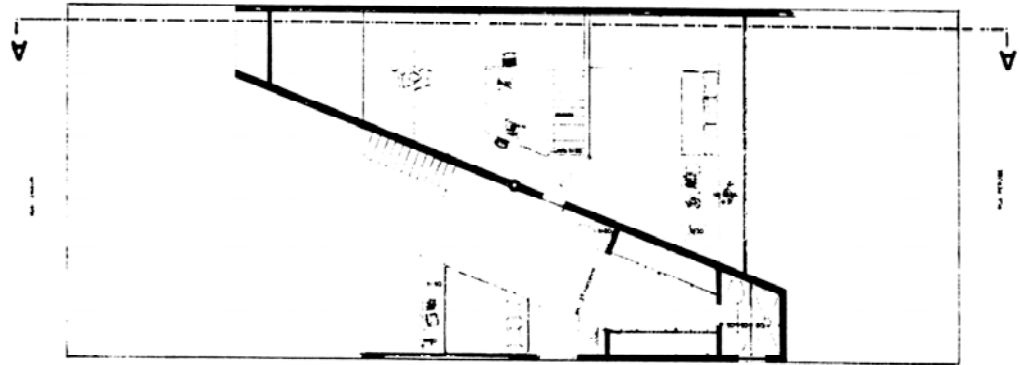
AC7108_25E



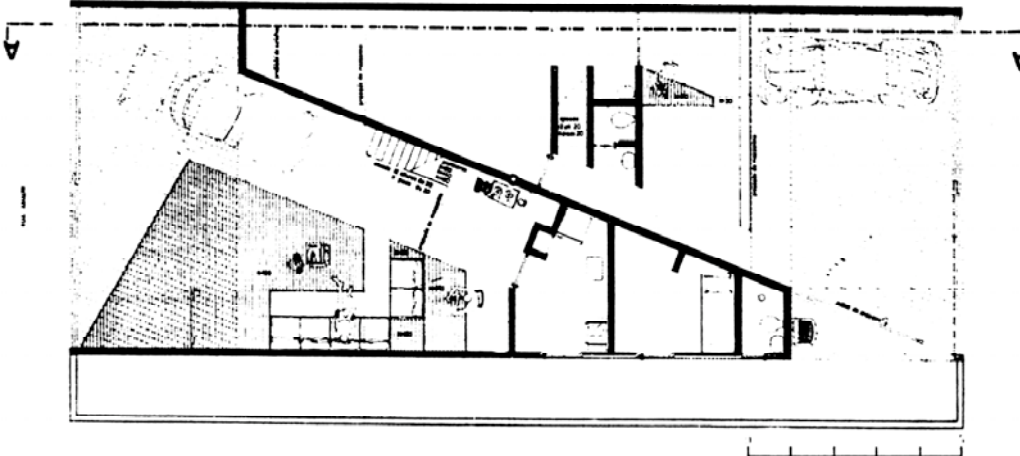
Corte A-A



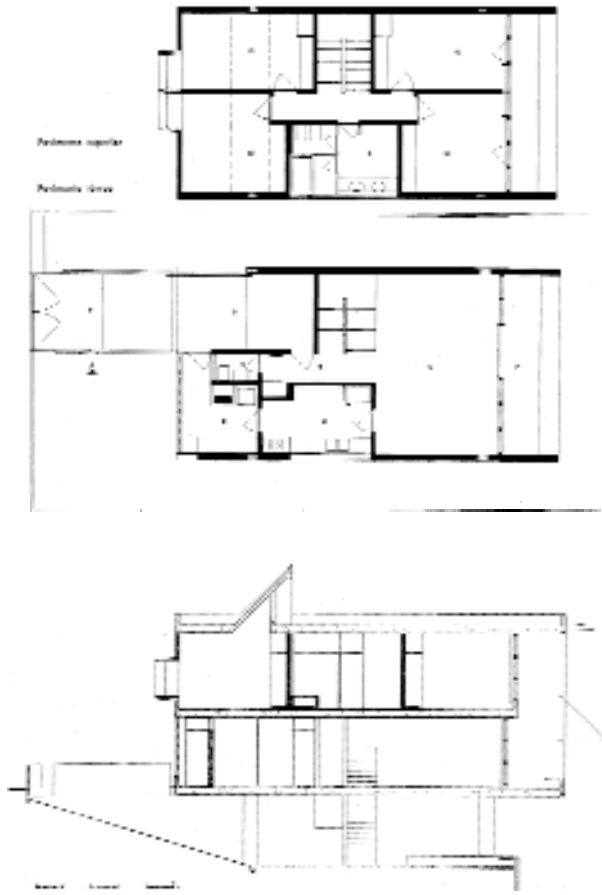
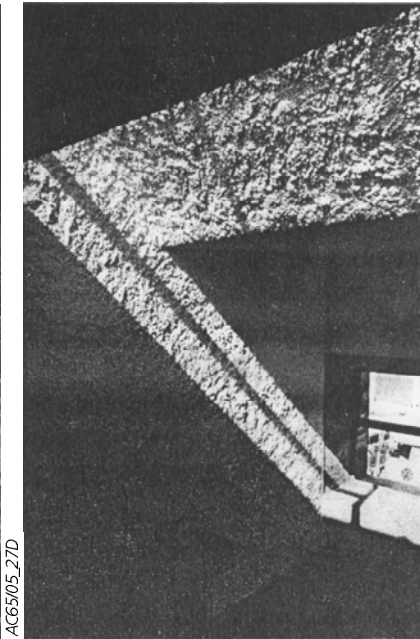
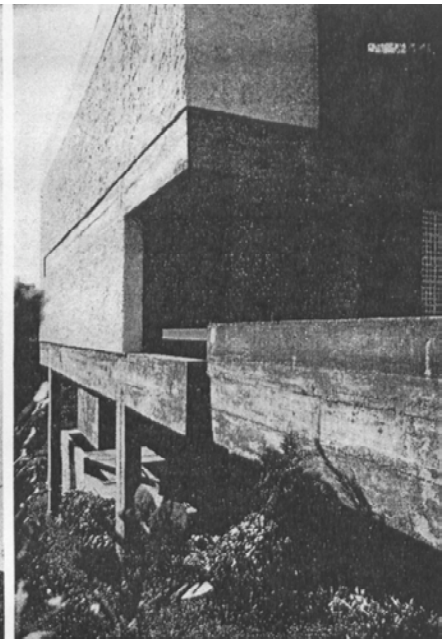
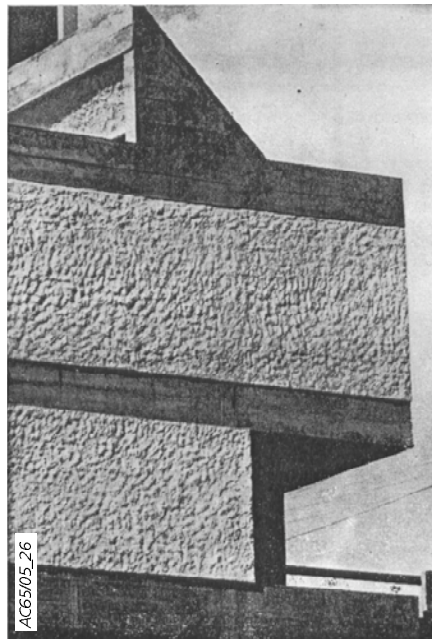
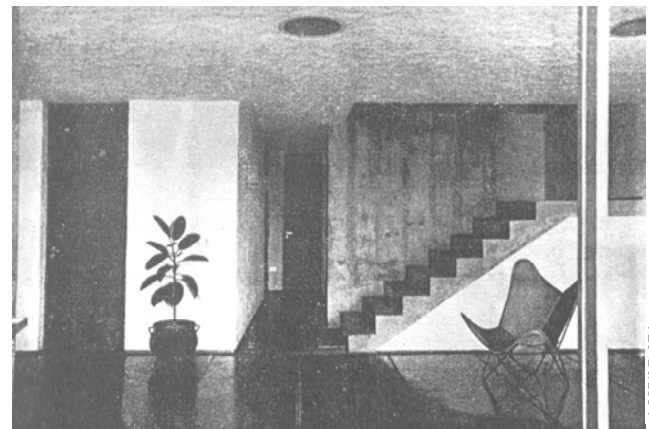
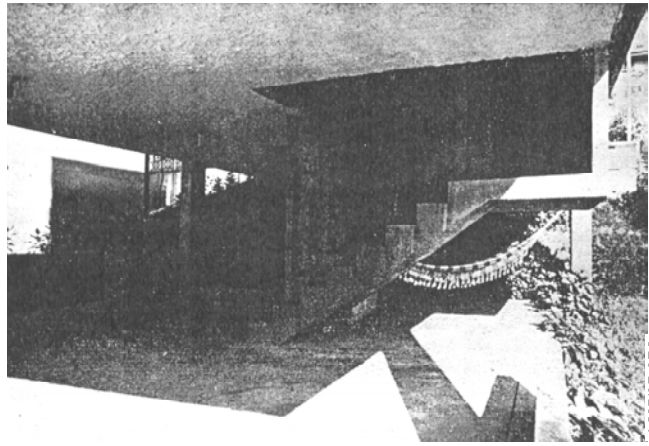
Cobertura



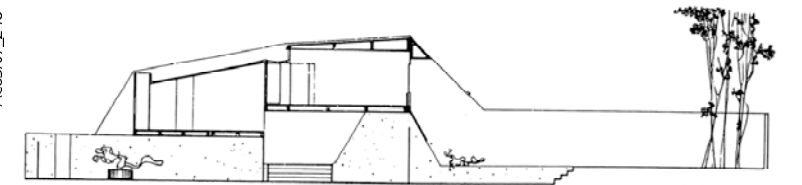
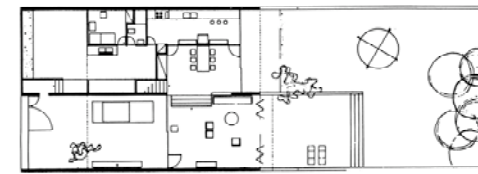
Mezanino



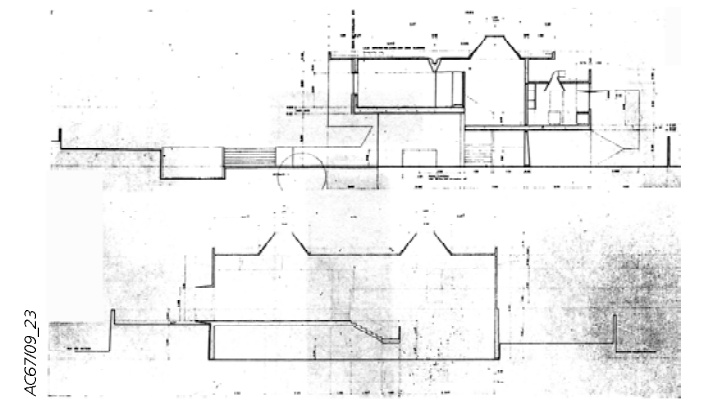
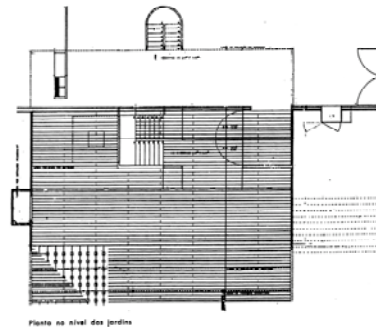
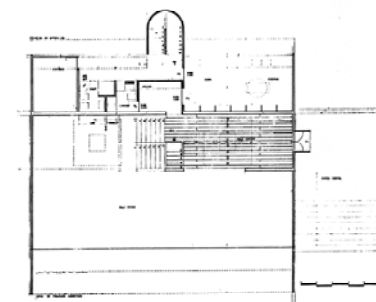
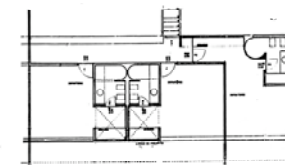
Pavimento térreo



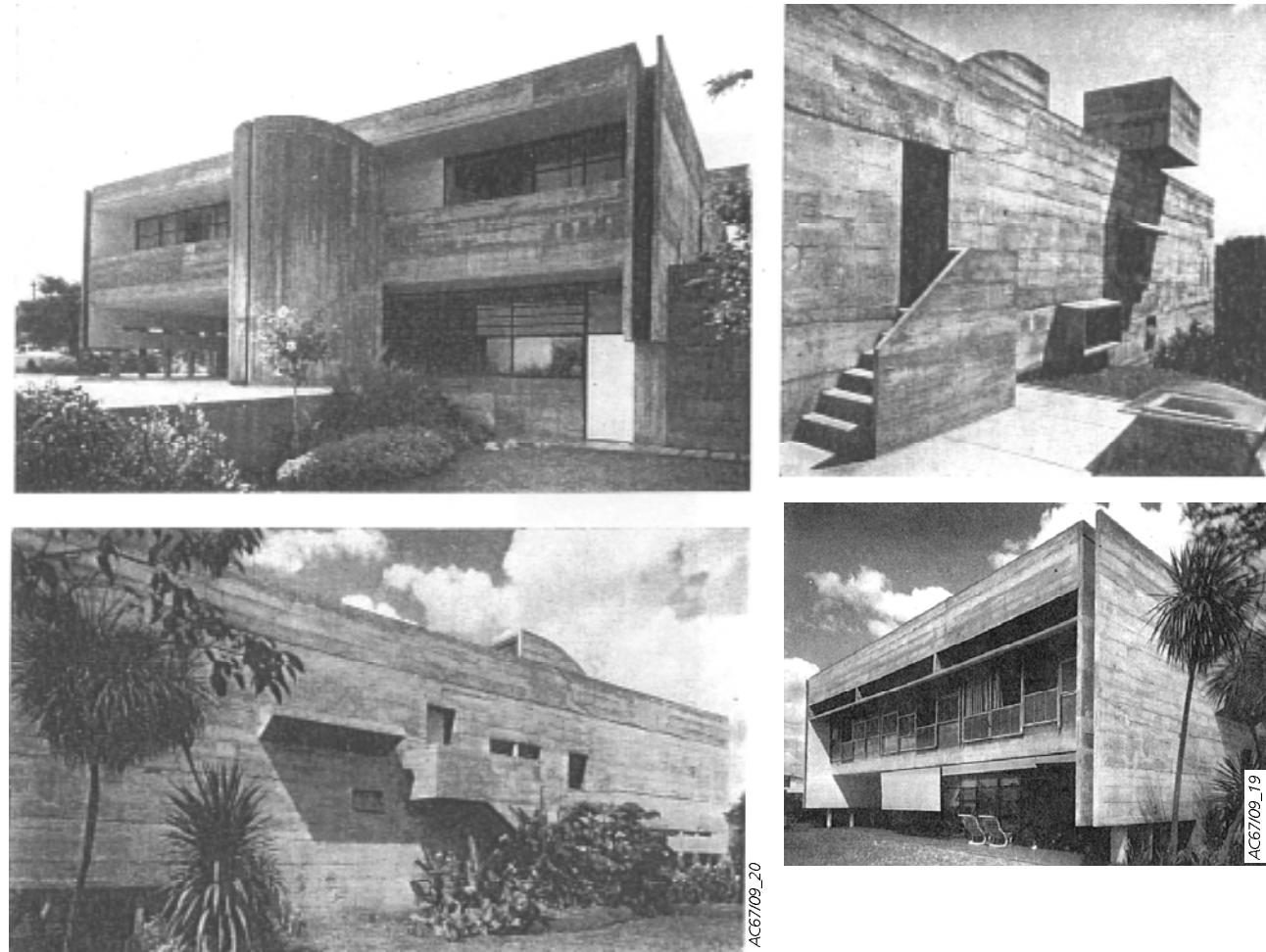
CASA BOLIVAR FERRAZ NAVARRO, 1960, PAULO MENDES DA ROCHA E JOÃO DE GENNARO



CASA GAETANO MIANI, 1961, PAULO MENDES DA ROCHA E JOÃO DE GENNARO



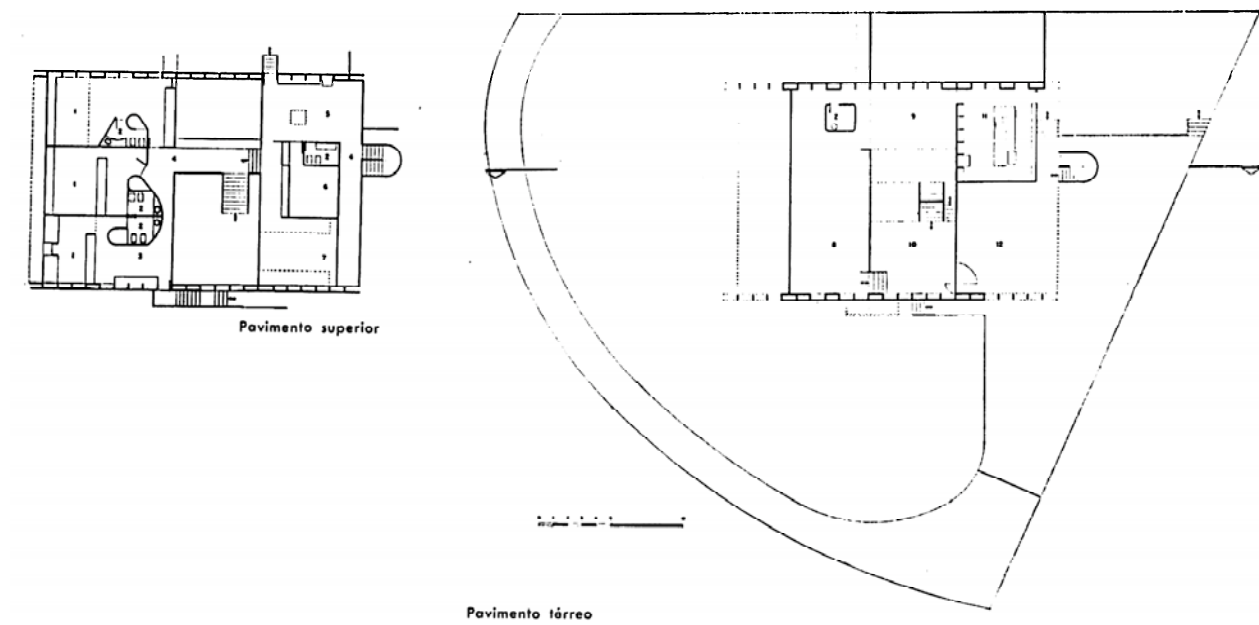
CASA CELSO SILVEIRA MELLO, PIRACICABA, 1962, PAULO MENDES DA ROCHA E JOÃO DE GENNARO



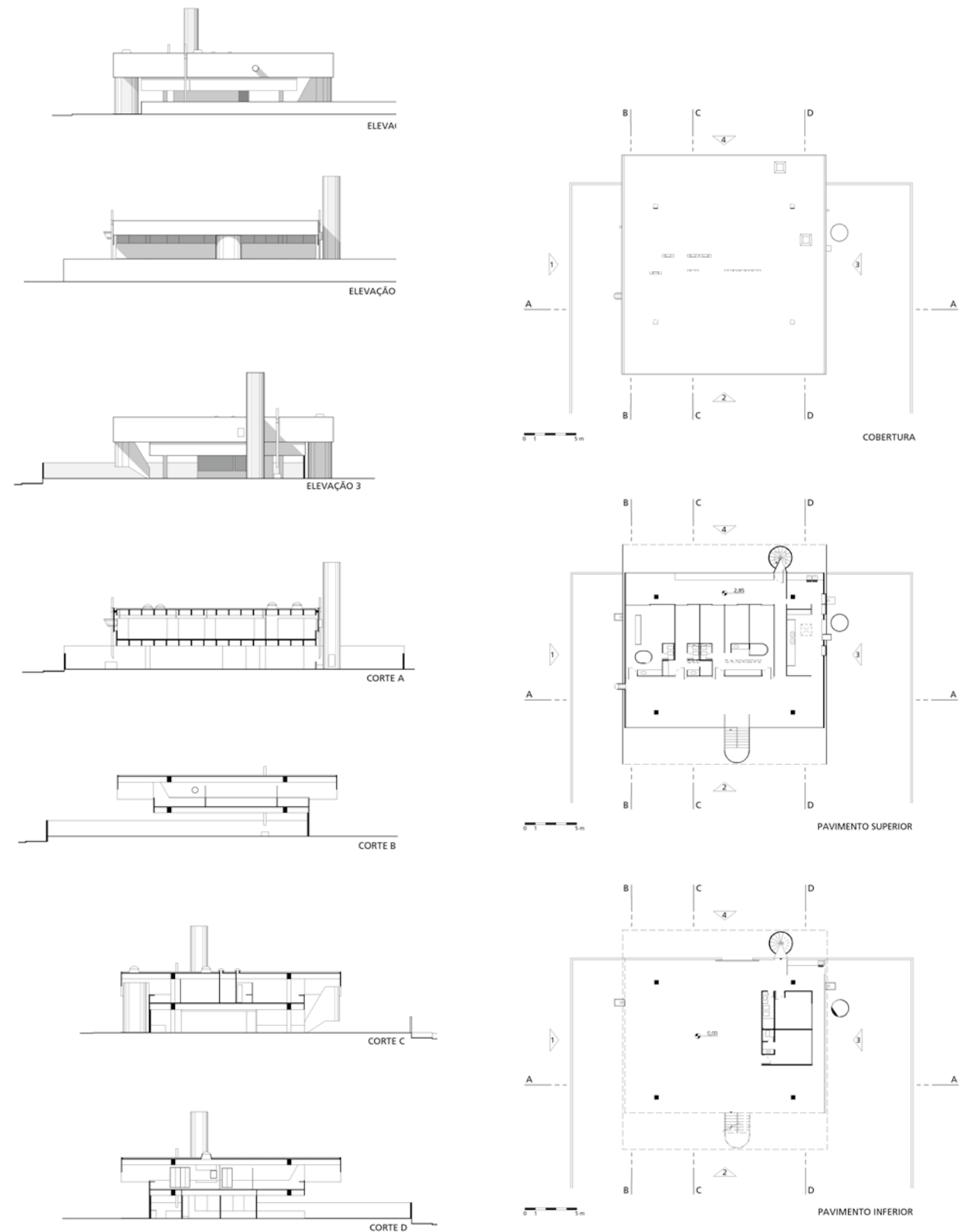
AC67/09_20

AC67/09_19

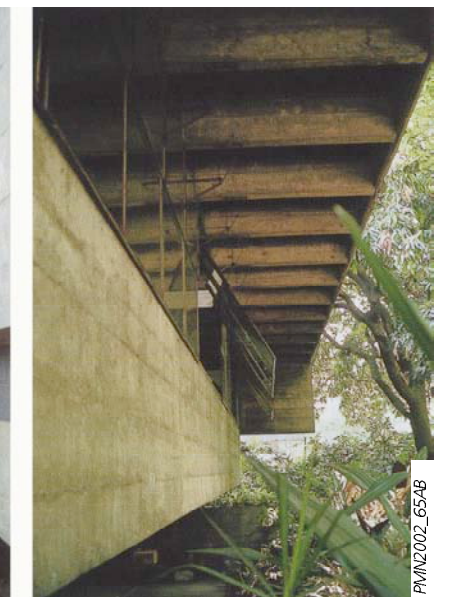
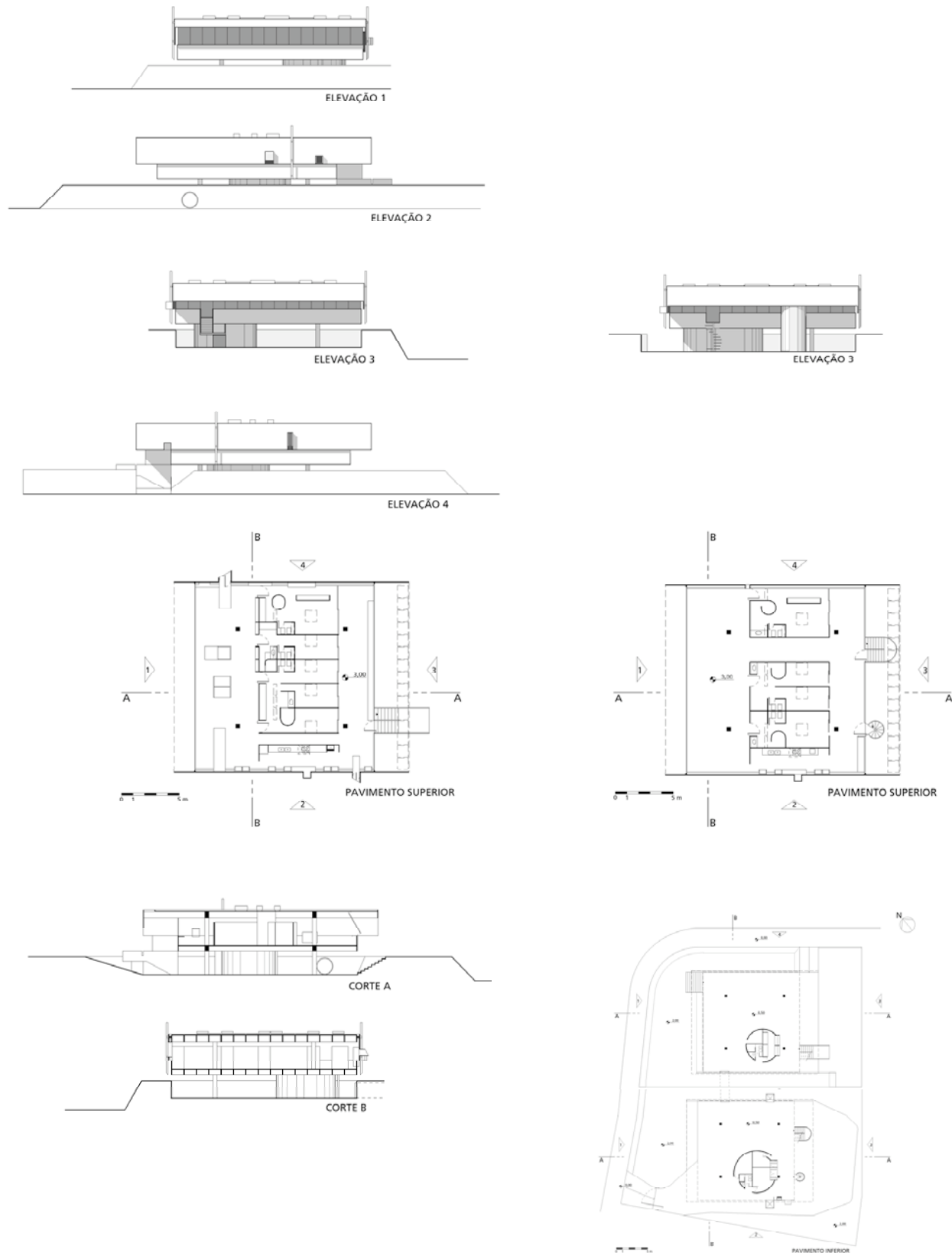
PVIN2000_79B



CASA BENTO ODILON FERREIRA, GOIANIA, 1963, PAULO MENDES DA ROCHA E JOÃO DE GENNARO



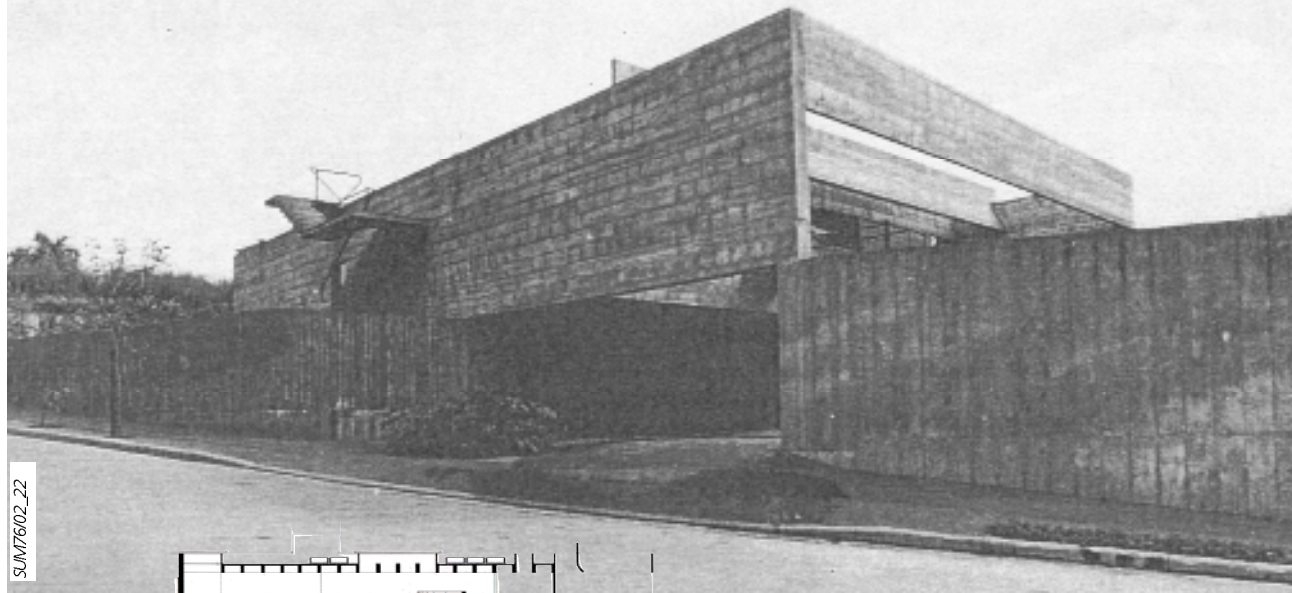
CASAS MENDES DA ROCHA E LINA CRUZ, 1964, PAULO MENDES DA ROCHA E JOÃO DE GENNARO



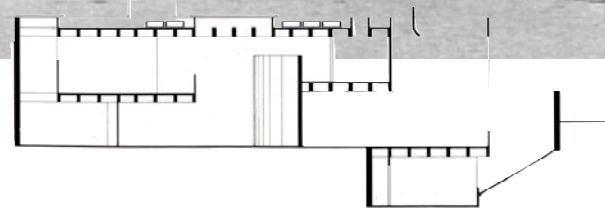
PVIN2002_60

PVIN2002_6548

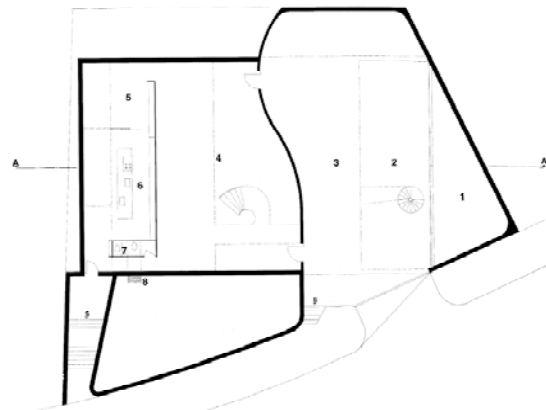
CASA FERNANDO MILLAN, 1970, PAULO MENDES DA ROCHA



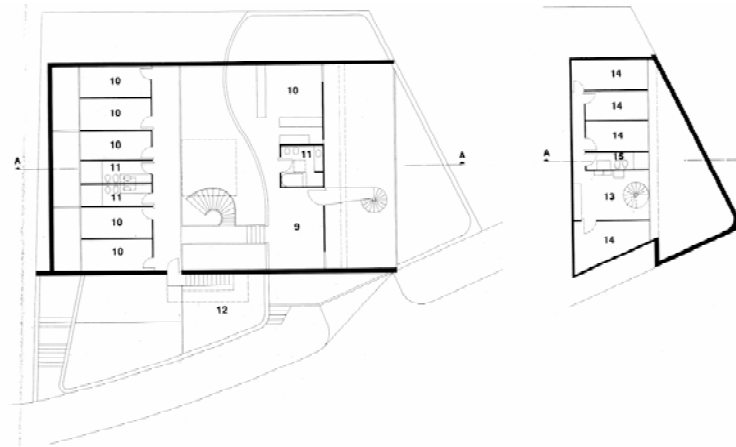
SJUN7602_22



PMIN2000_78



PMIN2000_76



PMIN2000_77

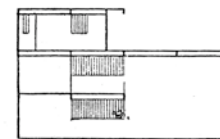
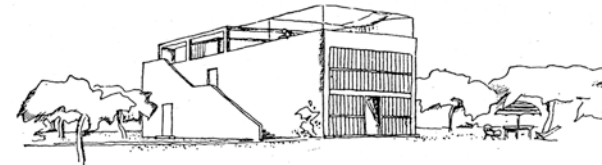
CASA ANTONIO GERASSI, 1989, PAULO MENDES DA ROCHA



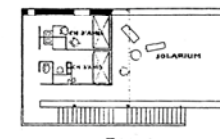
PMIN2001_92

PROTÓTIPO CITROHAN, LE CORBUSIER, 1920

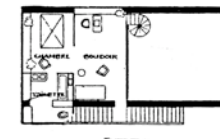
MAISON «CITROHAN» 1920



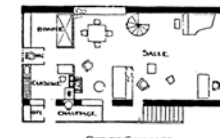
COUPE



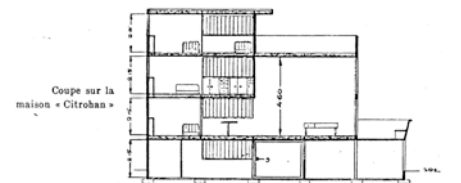
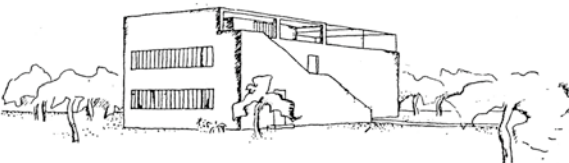
TERRASSE



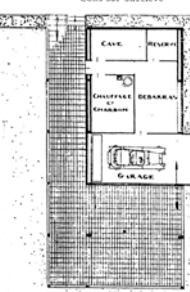
ENTRESC.



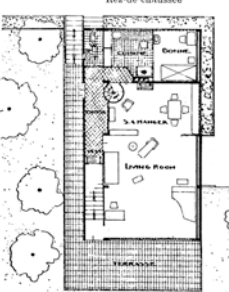
REZ DE CHAUSSÉE



Sous-sol surélevé



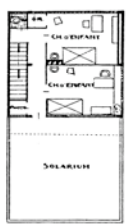
Rez-de-chaussée



Entresol



Etage



Les plans d'une maison « Citrohan » 1922