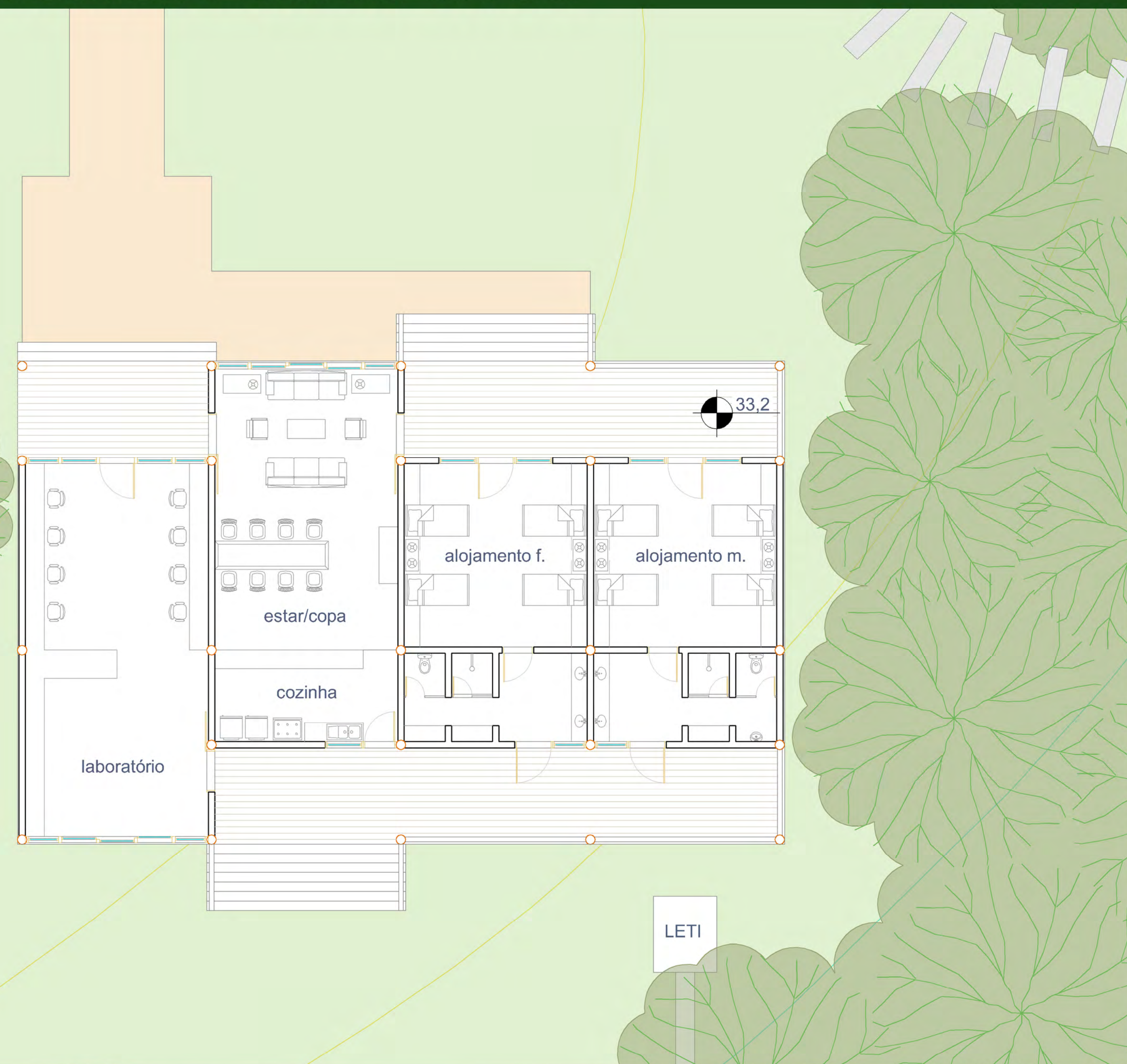


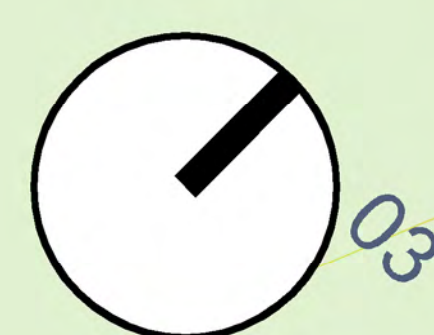
# LABORATÓRIO/ALOJAMENTOS



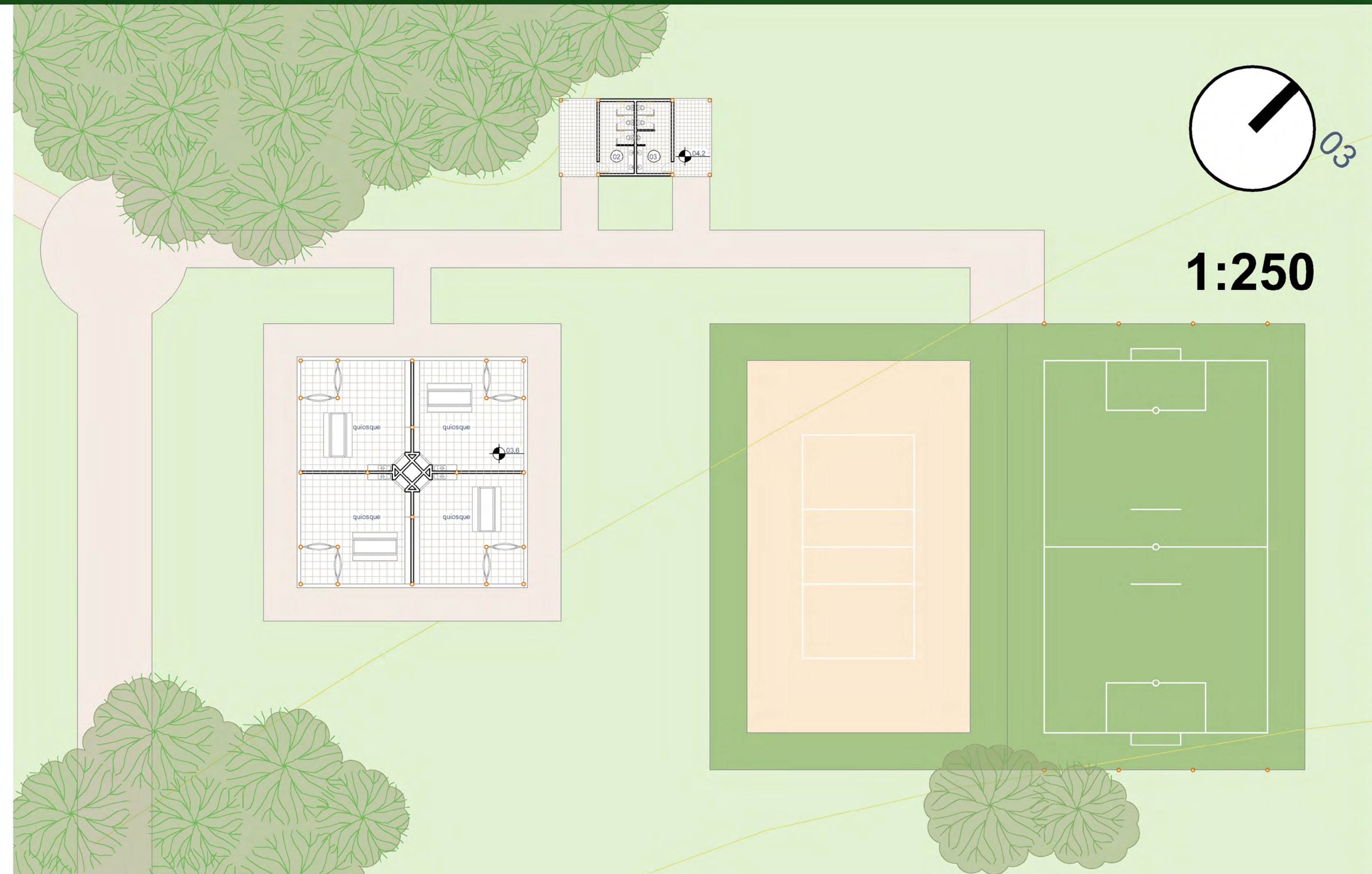
1:100



# ÁREA DE LAZER



1:250



# CENTRO DE VISITANTES PARA INTERPRETAÇÃO AMBIENTAL

Parque Estadual de ITAPEVA - Torres - RS

ALUNO: ADRIANO LEDUR ORIENTADOR: CARLOS BRESSA  
FACULDADE DE ARQUITETURA UFRGS - TCC PAINEL FINAL 2012/2